

## TOUCHLESS KITCHEN FAUCET

Read this manual carefully before use and keep it for future reference.

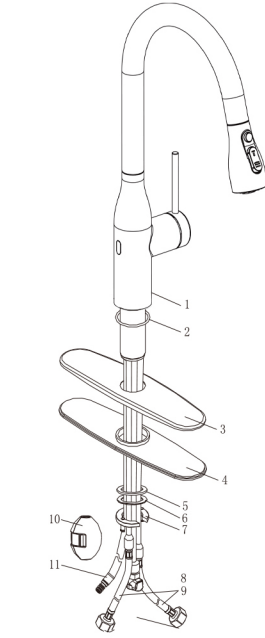
Thank you for purchasing our Kitchen Faucet. It is a touchless kitchen faucet with multi-flow modes and 360° spout.

### Contents

1.PRODUCT OVERVIEW	02
2.PACKAGE CONTENT	03
3.BEFORE INSTALLATION	04
4.INSTALL THE FAUCET	05
5.NOTE AND MAINTENANCE	11
6.SPECIFICATIONS	13

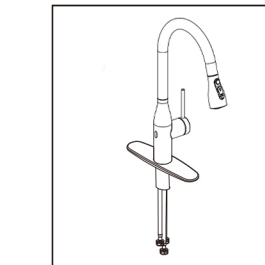
## 1.PRODUCT OVERVIEW

- 1.Faucet assembly
- 2.Base O-ring
- 3.Steel basement(Deck plate)
- 4.Basement mat(Deck mat)
- 5.Rubber gasket
- 6.Steel gasket
- 7.Locking nut
- 8.Quick connect inlet hose
- 9.Cold and hot water inlet hose
- 10.Weight(counterweight)
- 11.Pull hose

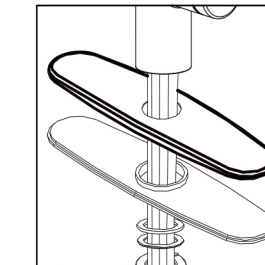


Carefully check package contents, if anything is missing or damaged, please contact online customer service for support. **Email:** [After-Sales-Service-Desk@outlook.com](mailto:After-Sales-Service-Desk@outlook.com)

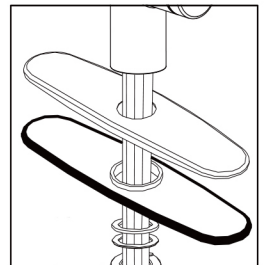
## 2.PACKAGE CONTENTS



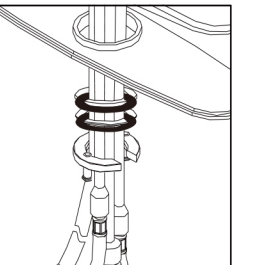
Pre-assembled Faucet × 1



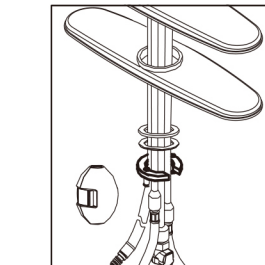
Steel Basement × 1



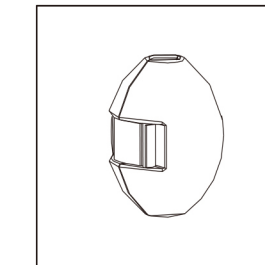
Basement Mat × 1



Steel Gasket × 1



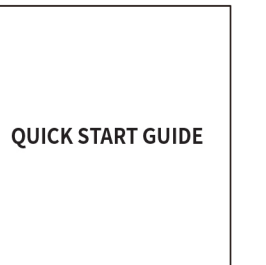
Pre-assembled Faucet × 1



Steel Basement × 1



Basement Mat × 1

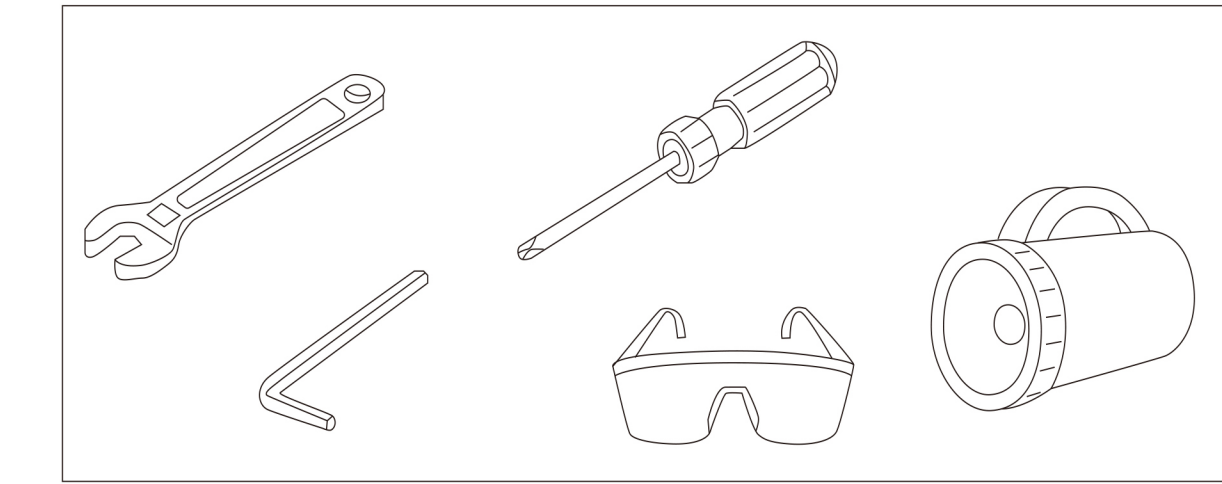


Steel Gasket × 1

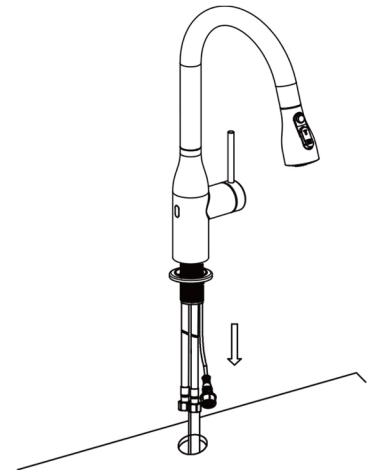
## 3.BEFORE INSTALLATION

1. The product has been inspected, debugged and disassembled according to the instructions.
2. Before installation, the dirties in the wall-embedded water pipes must be removed to ensure normal water flow.
3. The installation hole on the countertop should be between 33mm to 38mm, and the distance between the middle hole. and the wall must be greater than 120mm. (Installation tool: wrench).

### You May Need(Not included)

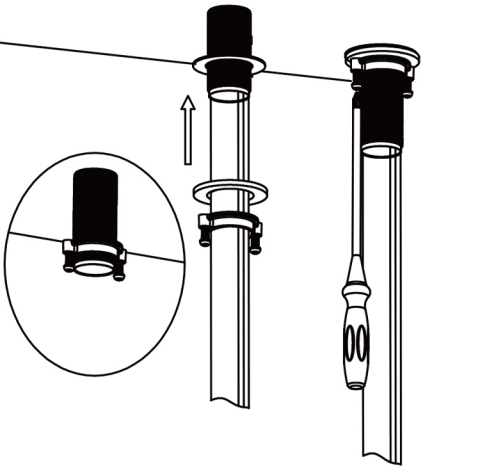


#### 4. INSTALL THE FAUCET



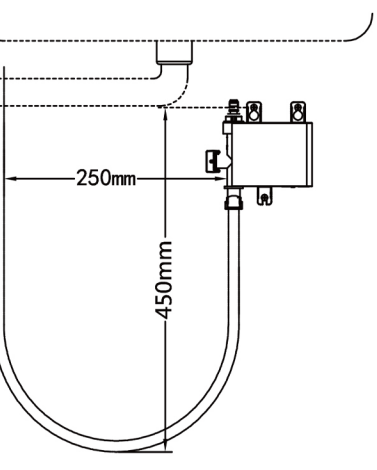
1.Remove the installation nut and gasket from the faucet, thread all water hoses and signal wires through the reserved holes on the countertop, place the base at the bottom of the faucet, and insert the whole faucet onto the countertop.

-05-



2.Take rubber gaskets, metal gaskets, and lock nut and thread them through all water hoses and signal wires in sequence. Thread the lock nut onto the sleeve of the faucet and tighten them by hand.  
3.Use a Phillips screwdriver to tighten the two screws on the nut.

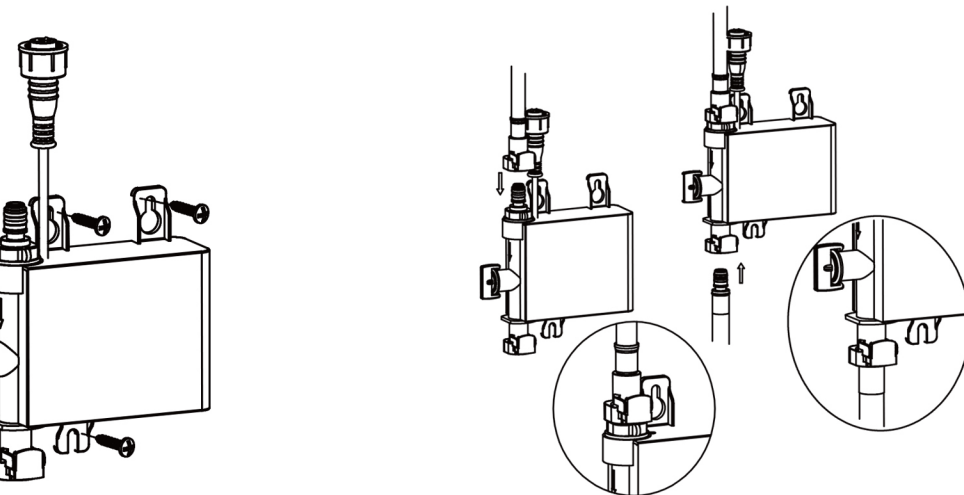
#### 4. INSTALL THE FAUCET



4. The preferred installation distance between the pull hose and the control box is 250mm.  
5.The preferred installation distance from the predetermined installation hole position of the control box to the floor is 450 millimeters.  
Explanation: The size shown in the figure is the preferred size for installing the control box (the size can be adjusted for better performance).

-06-

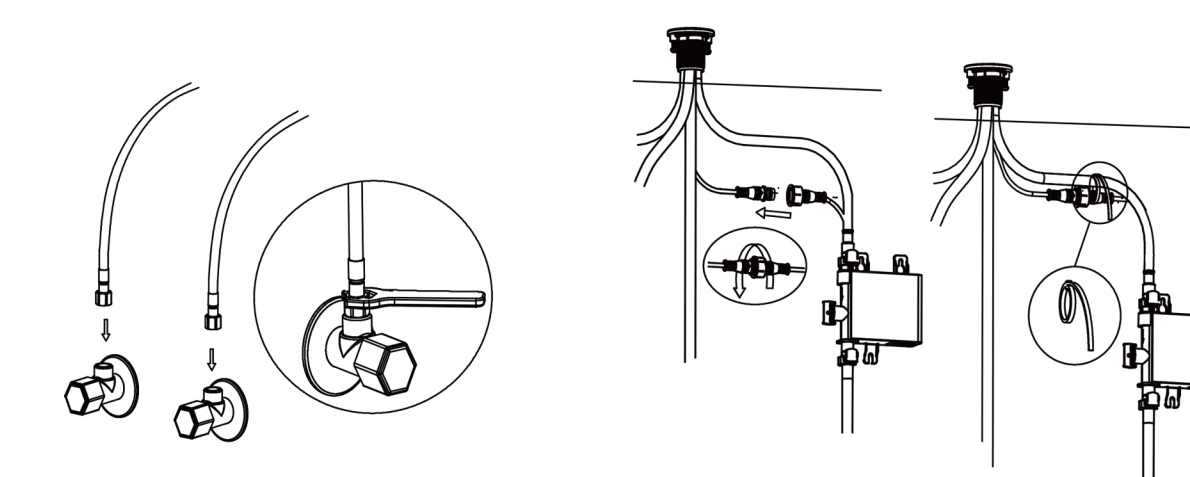
#### 4. INSTALL THE FAUCET



6. According to the preferred size, use a Phillips screwdriver to install the control box under the sink, leaving some adjustment space.  
7. Connect the water outlet hose to the water inlet end of the control box (two connectors can be inserted in place).  
8.Connect the pull hose to the outlet end of the control box (two connectors can be inserted in place).

-07-

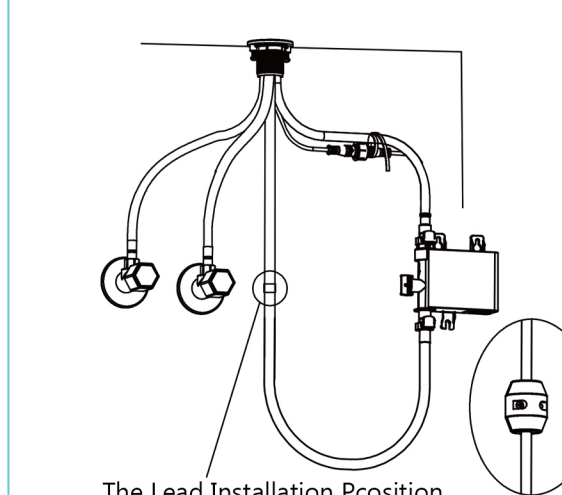
#### 4. INSTALL THE FAUCET



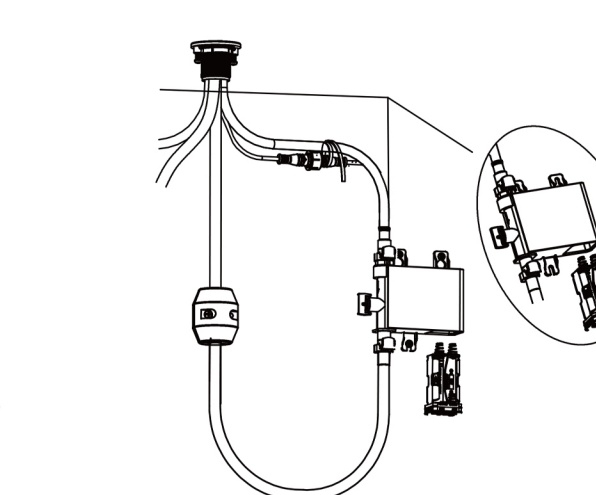
9. Connect the cold and hot water inlet hoses to the corresponding water inlet angle valves and tighten them with a wrench.  
10.Connect the data cables and tighten the nut by hand.  
11.Tie the data cable and water outlet hose together.

-08-

#### 4. INSTALL THE FAUCET



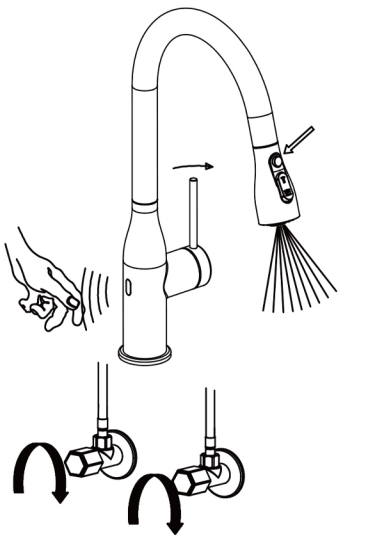
The Lead Installation Position.  
12.Install the lead at the marked position on the pull hose.



13.Remove the battery box from the control box,insert two AAA batteries and then install the battery box into the control box.

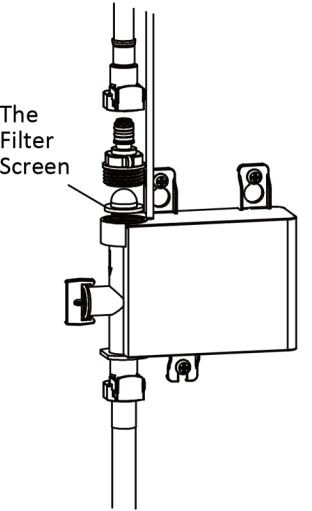
-09-

4. INSTALL THE FAUCET



- 14.Open the Cold and Hot water inlet angle valves.
- 15.Turn on the faucet handle, the water temperature and flow rate can be adjusted by the handle. Wave your hand to the sensing area to turn on and turn off the faucet.
- 16.Keep the faucet turn on, it will automatically close after 3 minutes of normal water discharge, and check if there is any leakage at the connection.
- 4.Pull out the shower spray and press the round button, the nozzle can generate blade shaped high-pressure water, and switching to the elliptical button, it can generate bubble water and spray water.

5.NOTE AND MAINTENANCE



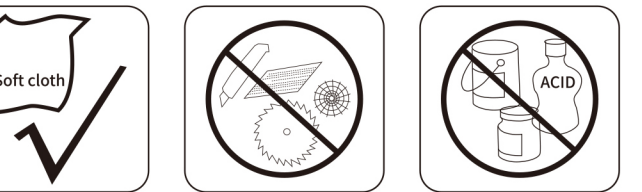
If the water flow rate of the faucet decreases, which affects normal use, it may be due to clogging of the filter screen. Close the inlet valve, press the inlet hose connector button from the upper end of the control box to remove the control box, release the connector on the control box, and then remove the filter screen for cleaning. After cleaning, assemble according to the disassembly steps.

**\*Notes:** When the faucet is not in use for a long time, please close the main inlet valve.

5.NOTE AND MAINTENANCE

Incorrectly installed or unapproved clip and hose may cause water leaks and property damage. Follow instructions to install hose and clip provided with this faucet.

- 1.Care should be given to the cleaning of this product. Although its finish is extremely durable, it can be damaged by harsh abrasives or polish. To clean, simply wipe gently with a damp cloth and blot dry with a soft towel.
- 2.Before using this product, please turn on the cold water first, and then turn on the hot water to avoid scalding.
- 3.We suggest that you clean the surface of your faucet as shown. Do not use acid detergents and abrasive cleansers.



6. SPECIFICATIONS

Performance index	Items	Specifications
Dimensions	L × W × H (inch)	9.8" * 11.0" * 16.9"
Main parameters	Mounting hole	1 or 3
	Main body material	SUS 304 stainless steel
	Spout rotates degree	360°
	Indicator markings	Red/Blue
	3 modes	Stream /Spray/ Blade Sweep

THANK YOU

