

INSTALLATION INSTRUCTION FOR KITCHEN FAUCET

PRODUCT INSTRUCTION

1. Faucet Name: Non-Pullable Kitchen Faucet, Pull-Down Kitchen Faucet;
2. Manual Function: Handle Is For Turning On And Off Water, Adjusting Temperature, The Spout Tube Is Rotatable, With Pulldown Hose, Water Flow Is Switchable Between Spray And Stream.
3. Heathy Faucet: Lead-Free All Steel Faucet, In The Line With The National Drinking Water Standard, A Real Healthy Faucet
4. Convenience: In The Course Of Washing Hand, Cleaning Vegetable, Filling Water, Water On And Off Can Be Done By Just Turning The Handle, It Is Real Convenient And Comfortable.
5. Hot And Cold Instruction: When Facing The Faucet, The Left Side Is For Hot Water, Right Side For Cold Water.

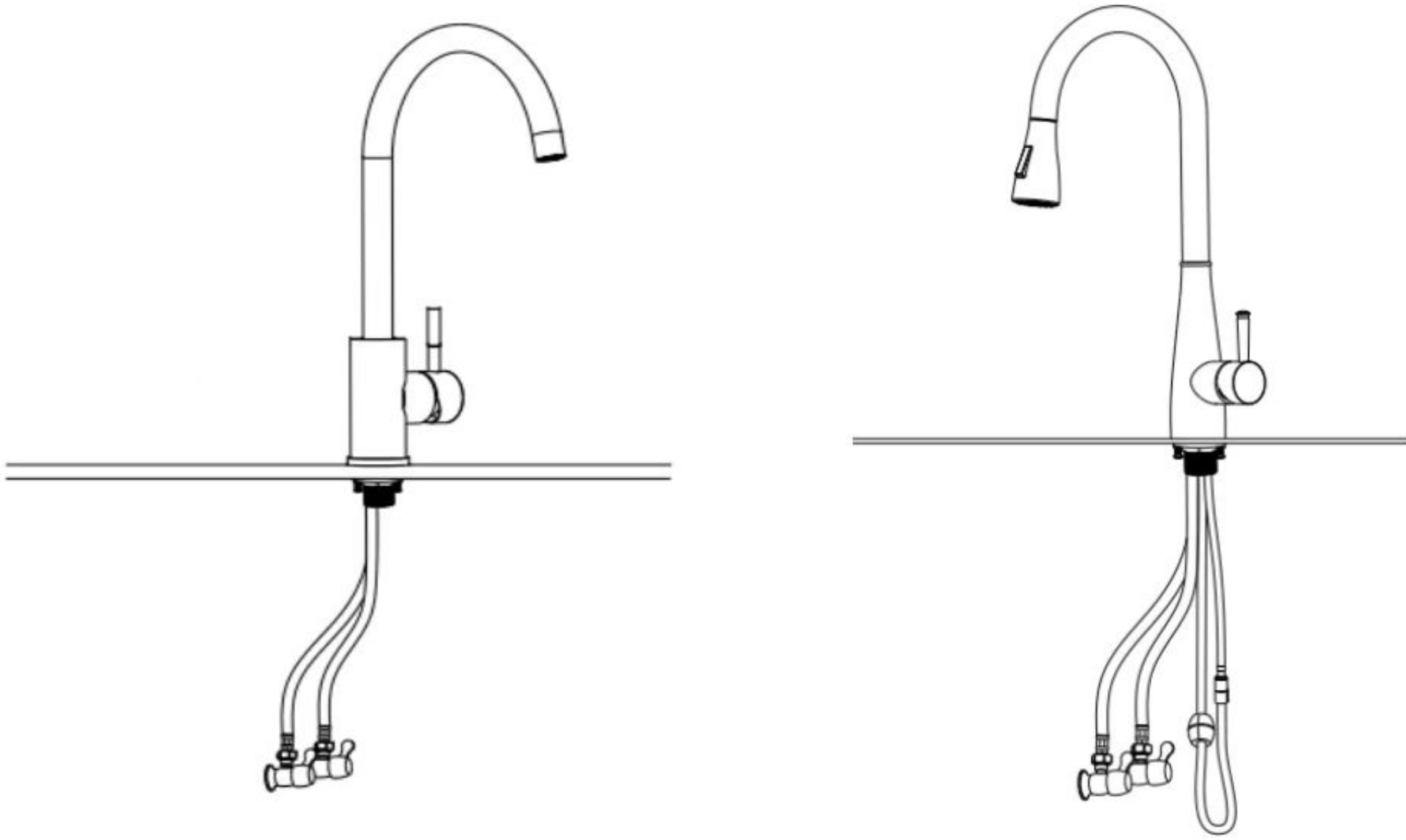
Attentions Before Installation

1. Please Carefully Read This Instruction Before Installation, And Keep The Instruction Book, Warranty Card, Quality Certificate And Invoice In Good Condition For Warranty In Future
2. Tools And Material For Installation: Screwdriver, Movable Wrench, 4 Pcs AA Batteries, Gloves (See Instruction Tool And Material Diagram For Details)

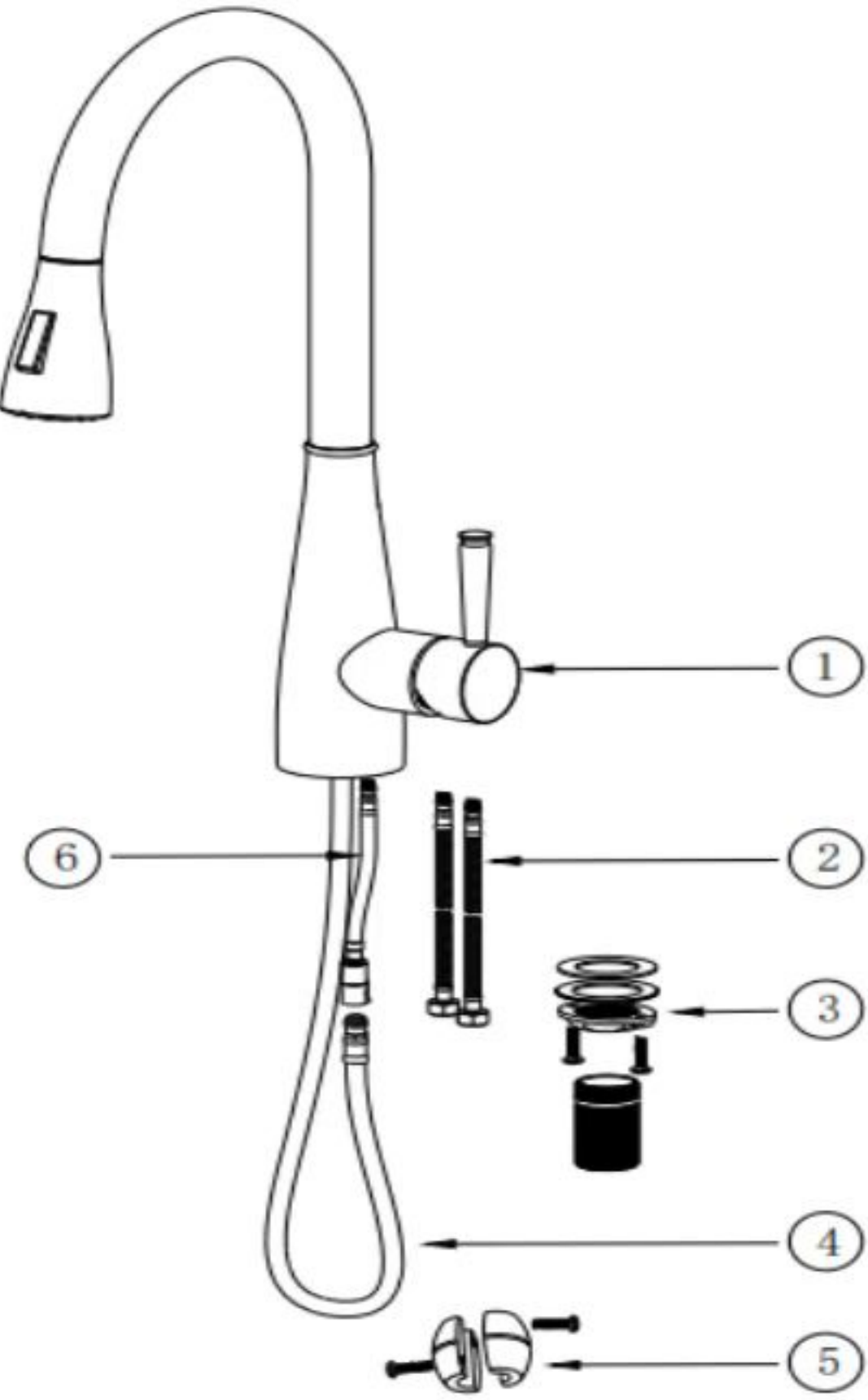
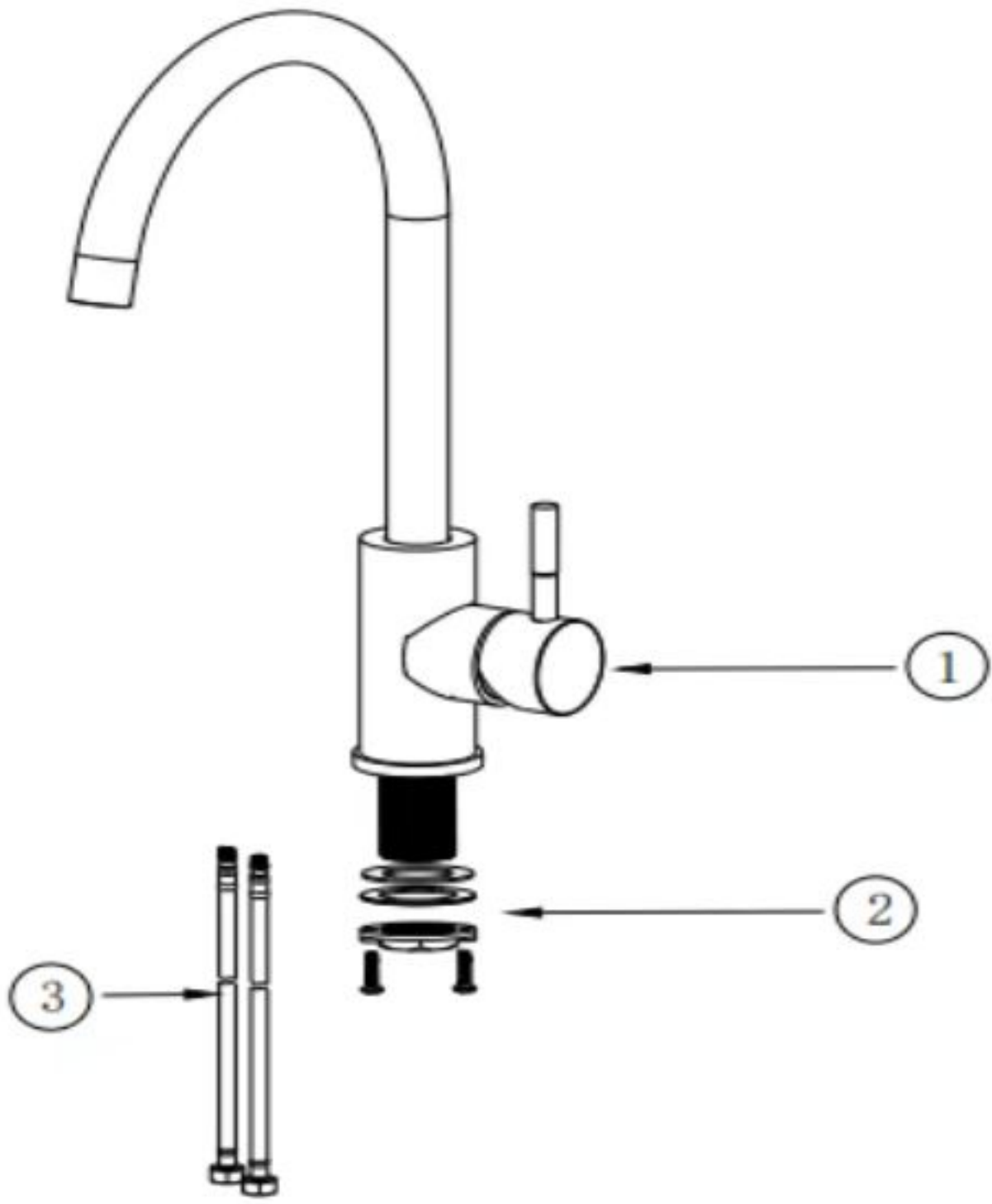
STANDARD AND PARAMETER

Implemented Standard	Gb18145-2014
Applicable Medium	City Water
Product Name	See Details On The Label Of Package
Working Pressure	≥1.0Mpa
Enviornmental Temperature	0°C-75°C
Connector Spec For Supply Line	G1/2 "
Model No.	See Details On The Label Of Package
Inspection Staff	
Data Of Production	

INSTALLATION DIAGRAM



PRODUCT COMPONENT AND PARTS



INSTALLATION TOOLS



Screwdriver

Thanks For Your Purchasing Our Sensor Kitchen Faucet, I Believe The Product Will Bright You A Better Kitchen Experience, Making You Have Quick Access To Using Water, Kitchen Utensils, And Making Food Material Cleaner, More Convenient On Cleaning Dish And Vegetable, And More Effective On Saving Water Resources.

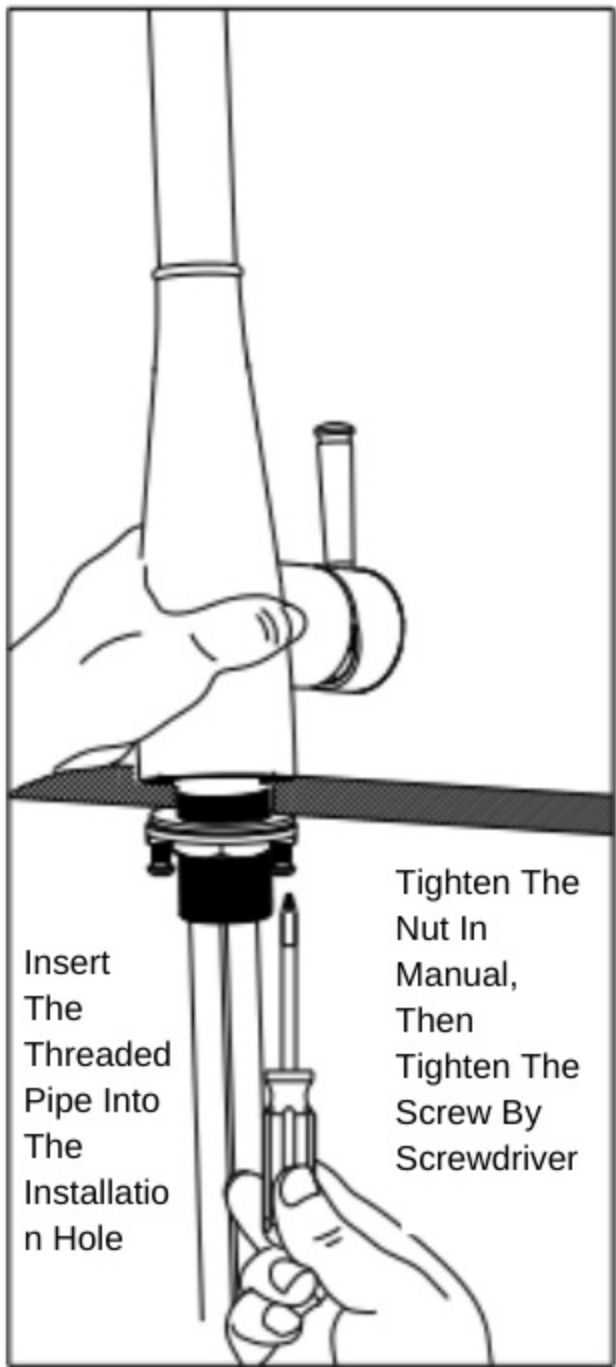
INTALLATION PROCESS

I . Installation Of Faucet Body

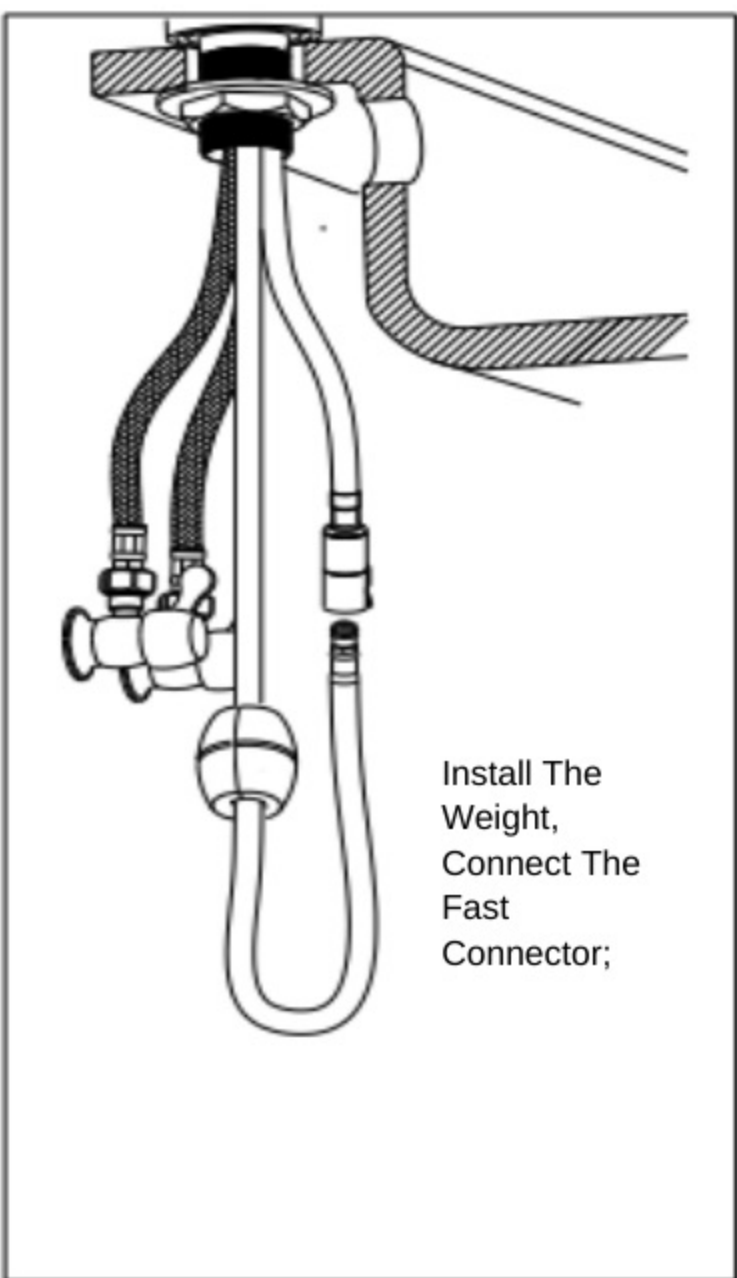
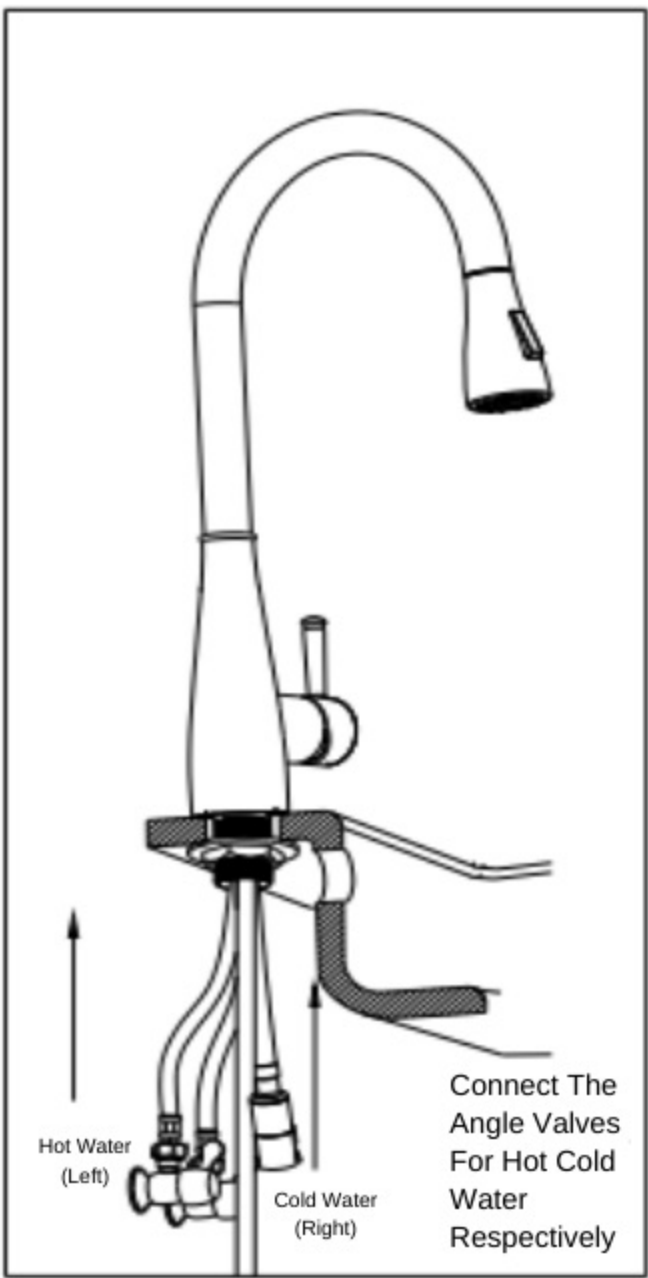
- 1.Firstly Take Off The Nut, Metal Gasket From The Bottom Of The Faucet
- 2.Insert The Faucet Base Along With All Parts Including Pull-Down Hose And Supply Lines, Into The Hole On The Countertop
- 3.Straighten Faucet Base, Put The Rubber Washer, Metal Gasket And Nut On The Threaded Pipe, And Tighten It.

Attention :

- 1.All Hoses Must Be Covered In The Gasket And Nut
- 2.The Screw In The Nut Should Ensure That The Screw Should Not Protrude The Nut, If The Faucet Can Not Be Secured Well, Tighten The Screw To Strengthen



Flexible Hose and Weight



MAINTENANCE



- 1.Faucet Cleaning: Ofen Clean The Faucet With Soft Cloths, Or Cleaning With Tooth Paste; Don'T Clean The With Rough Object, Such As Rough Linen, Brushes, Iron Sand Etc., To Avoid Function Failure And Product Damage.
- 2.Suggestion: Clean The Screen Filter In The Faucet Spout Regularly For Pulldown Faucet, Directly Clean The Screen Filter For Non-Pullable Faucet, To Secure The Water Output Performances
- 3.Don'T To Shake The Faucet, Otherwise It Is Easy To Cause Product Failure
- 4.Can Not Use Strong Acid And Alkali Detergents For Cleaning.

Common Troubleshooting

ABNORMAL PHENOMENONS	POSSIBLE CAUSES	ELIMINATION METHODS
<ul style="list-style-type: none">No Water Out	<ul style="list-style-type: none">No Water Supply Or Faucet Is Not Yet Turned OnCity Water Pipe Or Income Supply Line Been BlockedFaucet Spout Is Too Dirty To Be BlockedThe Hole Of Cartridge Is Blocked By Debris	<ul style="list-style-type: none">Check And Flushing
<ul style="list-style-type: none">Can Not Turn Off Water Or Water Leakage	<ul style="list-style-type: none">Fail To Operate According To Instruction, Or Parts Don'T Not Yet Be TightenedLess, Missing Or Wrongly Install Connector Nut Sealing RingThe Sealing Ring Is A Little Larger Or SmallerLong Time Use, Sealing Ring Is Worn Or Aged.	<ul style="list-style-type: none">Check If Less , Missing Or Wrongly InstallInstall With Required Standard Sealing Ring
<ul style="list-style-type: none">Accessories Can Not Be Assembled Or Water Leakage	<ul style="list-style-type: none">Install With Non-Factory Matching PartsUsing Incorrect Maintaining Methods	<ul style="list-style-type: none">Check For Original Factory Parts
<ul style="list-style-type: none">Low Rate Of Flowing	<ul style="list-style-type: none">Too Low Water Pressure From Water SourcesFaucet Switch Is Not Completely OpenedInside Of Water Supply Line Is BlockedOutput Hole Of Cartridge Is Partially BlockedScreen Filter Of Output Spout Is Blocked	<ul style="list-style-type: none">Refer To Product Spec DatasheetCheck If Water Pressure Is NormalCheck If The Input Supply Line Is SmoothFlushing Screen Filter In Spout
<ul style="list-style-type: none">Water Temperature Can Not Matched With Label;	<ul style="list-style-type: none">Hot Or Cold Water Output Is Not Matched With Marking	<ul style="list-style-type: none">Check Install Problems For Hot Or Cold Water Pipe

Packing List And Contents

No.	Part Name	QTY	Remark
1	Faucet Main Body	1	Include Faucet Body, Touch Module, Pulling Hose Etc.
2	Hot Cold Water Supply	2	Red, Blue, Silver Each 1 Pcs
3	Threaded Pipe Combination	1	
4	Pull-Down Hose	1	
5	Weight	1	
6	Mixed Water Short Hose	1	

Warranty Provisions

WARRANTY CARD	
User Name	
Sales Shop (Product Model)	
Date Of Purchase	
Warranty Period	Our Company Carries Out Five-Years Quality Warranty And One-Year Use Warranty, And Provide Life-Long Maintenance Services

Remark:

Our Company Has Wide Rang Of Quality Assurance For The Most End Customer Of Our Product, Our Product Has 1 Year Gurantee On The Premise That They Are Proven To Be Installed And Used Normally;

The Quality Problem Caused By Below Behaviors Is Not In The Range Of Guarantee

- 1. The Quality Problems Caused By Abnormal Installation, Replacement, And Repair, Are Not Covered By Warranty.
- 2.Products For Industial And Commercial Purpose Are Not Covered By This Warranty, But Will Automatically Extend To Customers For This Purpose, And So Son.
- 3. Quality Problem Caused By Misuse, Abuse And Negligence And Using Non-Our Accessories Are Not Covered By This Guarantee.