

HAMLET 42" RIGHT OFFSET CABINET

ARIEL

F042S-R



BASE CABINET DIMENSIONS

42" W x 21.5" D x 34.5" H

FEATURES

- Solid wood frame & plywood panels
- Dovetail drawers and joints
- Soft closing doors & drawers

HARDWARE FINISHES



Brushed Nickel



Satin Brass



Matte Black



Polished Chrome

AVAILABLE COLORS



White



Grey

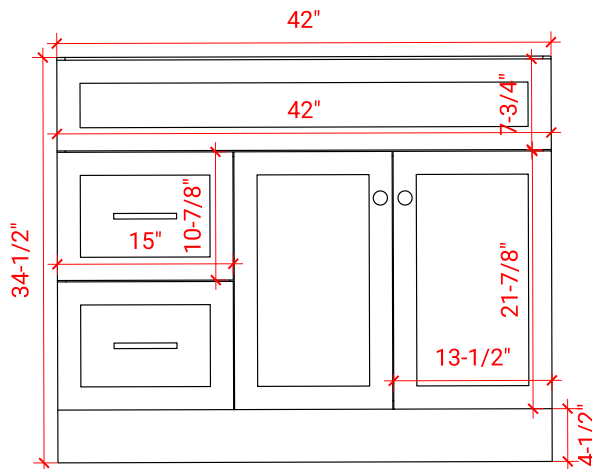


Midnight Blue

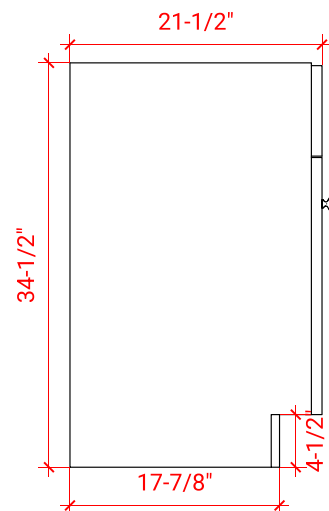


Black

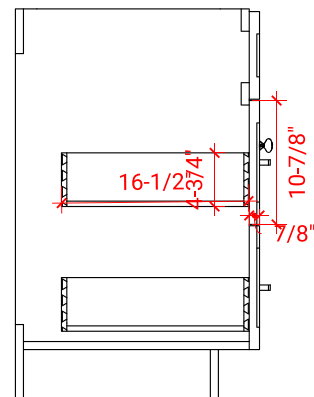
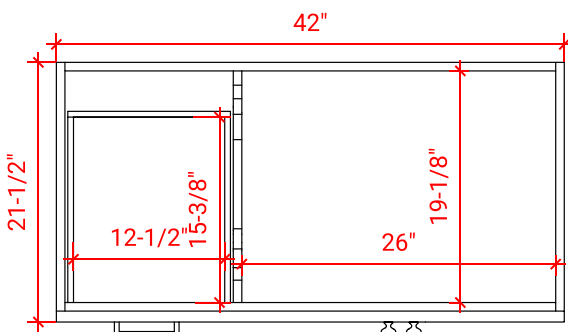
FRONT VIEW



SIDE VIEW



PLAN VIEW



ARIEL

43" W x 22" D x 1.5" H

White Quartz
WQ-043S-R-REC-CT

- Solid countertop with mitered edges & seams
- Undermount white rectangular sink
- Pre-drilled for 8" widespread faucet

- Countertop
- Matching Backsplash
- Rectangle Sink

Technical drawing of a rectangular panel with dimensions and a cutout. The overall dimensions are 43" wide and 22" high. The cutout is a rectangle with a width of 17-1/4" and a height of 12". The cutout is positioned 5" from the bottom edge and 14-1/4" from the right edge. The distance from the left edge to the start of the cutout is 2-1/2". The distance from the top edge to the top of the cutout is 8". The distance from the right edge of the cutout to the right edge of the panel is 1-3/8". The distance from the bottom edge of the cutout to the bottom edge of the panel is 5-1/2".

Technical drawing of a mechanical part. The part has a vertical section on the left with a jagged, sawtooth-like profile. The main body is a horizontal rectangular block. Dimensions are indicated in red:

- A vertical dimension of $3/4"$ is shown on the left side of the main body.
- A horizontal dimension of $3/4"$ is shown at the bottom of the main body.
- A vertical dimension of $1-1/2"$ is shown on the right side of the main body.
- A red dot labeled $R2$ is located at the top right corner of the main body, indicating a fillet or chamfer.

Isometric view of the base plate. Dimensions are indicated in red: 43" (length), 22" (width), 1 1/2" (thickness), and 4" (back panel height). The base plate features a central rectangular cutout with three circular holes along its long edge.