

EDCHC

FEATURES

- Lightweight yet sturdy
- Arrives fully assembled
- Stackable for convenient storage
- Optional seat pad has quick-dry construction with a waterproof bag encasing the foam core and a vented bottom to allow for drainage
- Bumpers on the seat bottom and legs prevent scratching while stacked
- Leg end caps provide protection from marring and scratching of surfaces
- Available only in packs of TWO or FOUR
- Mix and Match with Nette, Koral, and Salino Collections
- Pair with Eiland dining tables
- Low-maintenance and ideal for outdoor applications

MATERIALS

Powder-coated aluminum is durable and lightweight. Its rustproof nature ensures furniture will remain beautiful over its lifetime.

Seat Height	Assemb. Width	Assemb. Depth	Assemb. Height	Assemb. Weight Lbs.
17"	23"	23.5"	35"	10

Carton # of Boxes	Carton Width	Carton Depth	Carton Height	Carton Weight Lbs.
1	② 25" ④ 24"	26" 30"	40" 42"	30 54

② ④ Indicates weight for packs of TWO or FOUR.

CONSTRUCTION

Welded aluminum

HARDWARE

N/A

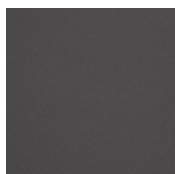
SHIPPING

Ships via small parcel

ASSEMBLY

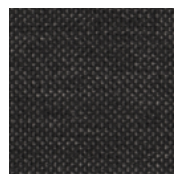
No assembly required

FRAME



CARBON POWDER COATED ALUMINUM C

QUICK SHIP CHAIR PAD FABRIC



PEPPER SOLUTION-DYED OLEFIN PR



Chair pads also available in custom fabric or Customer's Own Material. Pricing, minimum order quantities, and lead times will vary; please call for more information.

For Quick Ship or Extended Lead Time SKU status, please call 877-866-3331 or email sales@oxfordgarden.com.