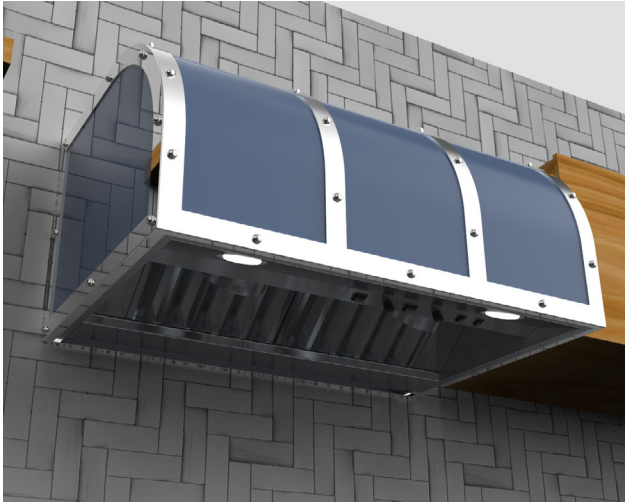


## PLFL PRO-V Insert



Sizes Available	28   34   40   46   52   58
Ductless Option	No
Vent size	-
Airflow (CFM)	1700 Max
Lighting	2-3 LED Lights   2 Heat Lamps
Noise (Sones)	7.0 Max
Voltage	110v
Blower	In-line or Local
Speeds	Variable
Controls	Knobs & Switches

The Pro-V Insert is a professional quality hood that is made to fit into a custom built hood cover. This design has the flexibility to be used with a local or in-line blower. It features knobs with variable speed control so you can tune the airflow to exactly what you need in any given cooking application. It also includes two heat lamps that are used in professional kitchens to keep food warm. It can be easily paired with one of our custom Artisan Hoods as shown.

