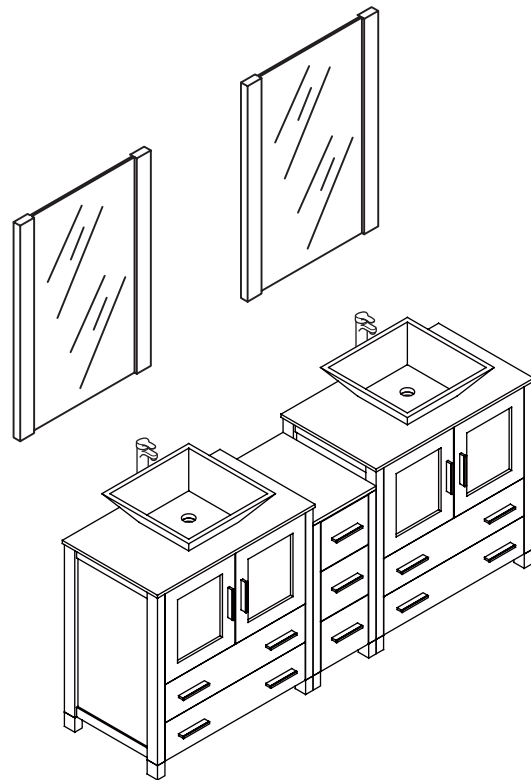
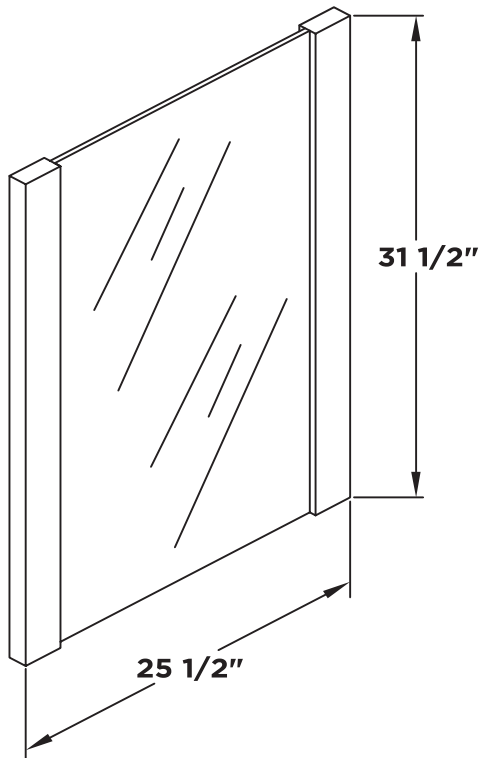


**FVN62-301230-VSL**  
**TORINO**  
**INSTALLATION GUIDE**

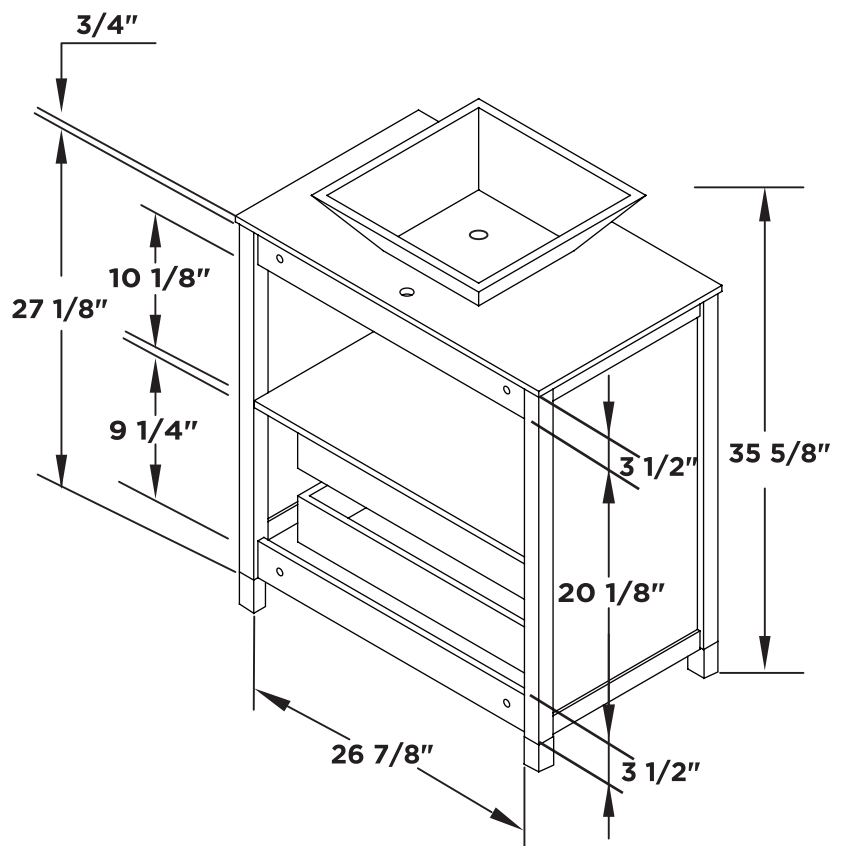
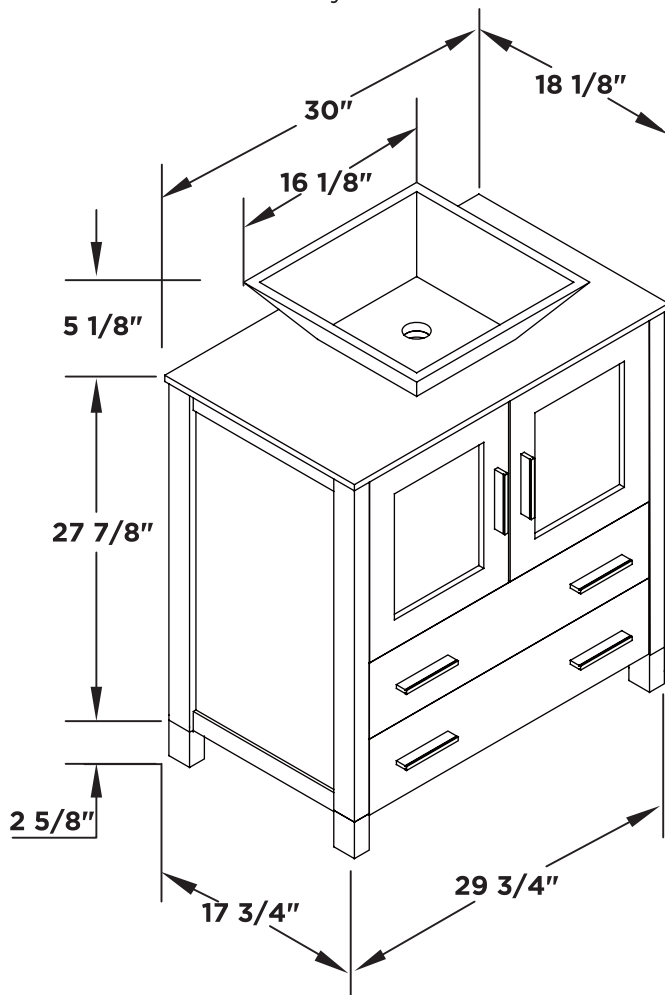


Mirror 2PCS

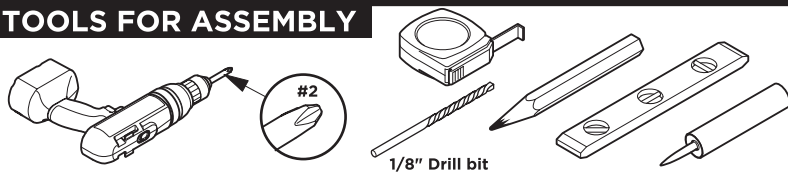


Vanity Front 2PCS

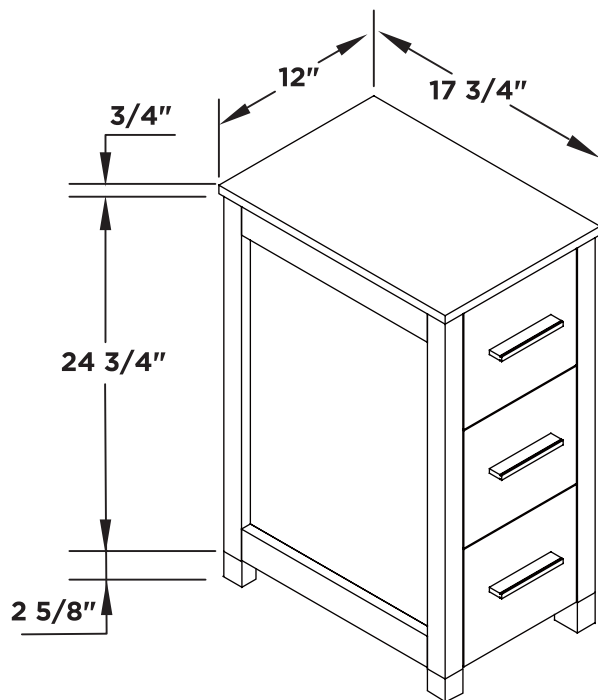
Vanity Back 2PCS



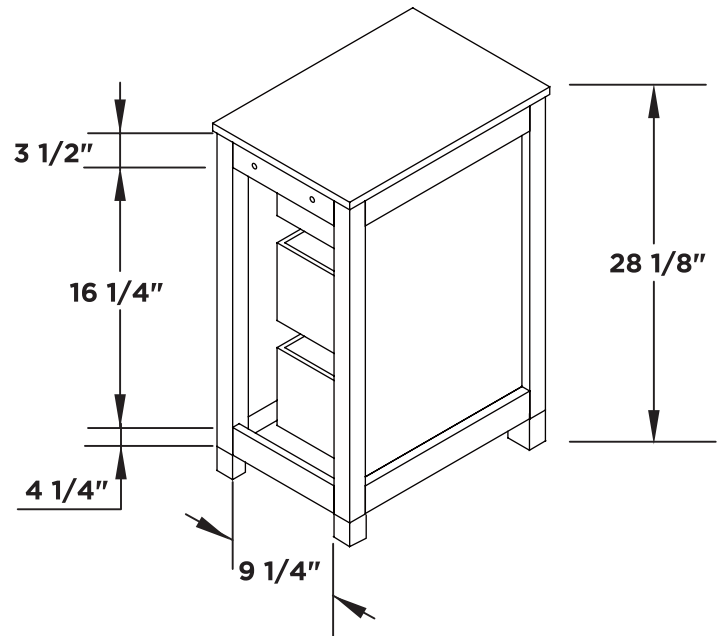
## TOOLS FOR ASSEMBLY



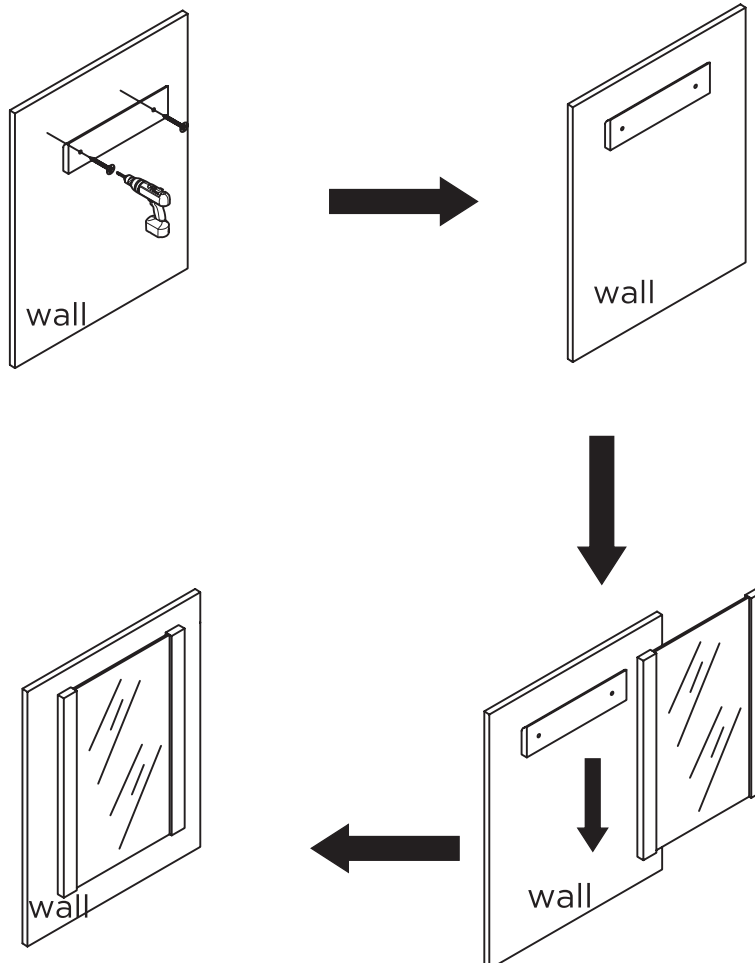
Side Cabinet Front



Side Cabinet Back

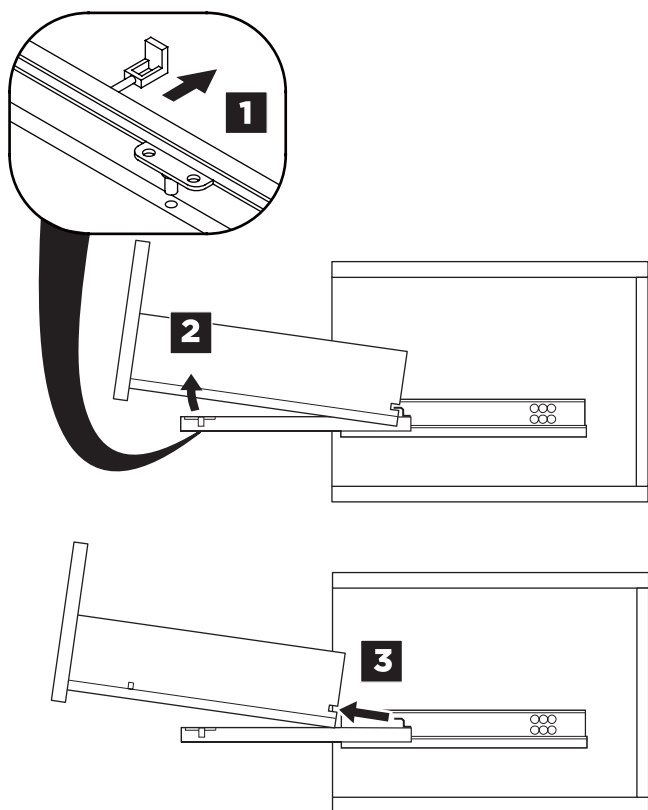


## MIRROR INSTALLATION

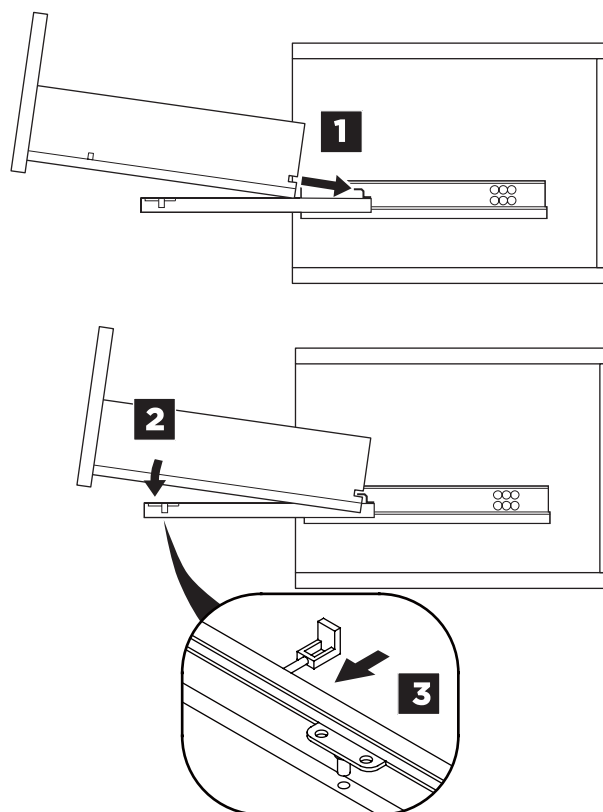


## DRAWER REMOVAL & INSTALLATION

### REMOVAL

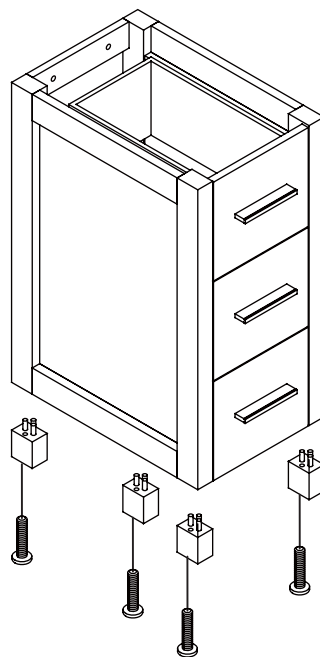
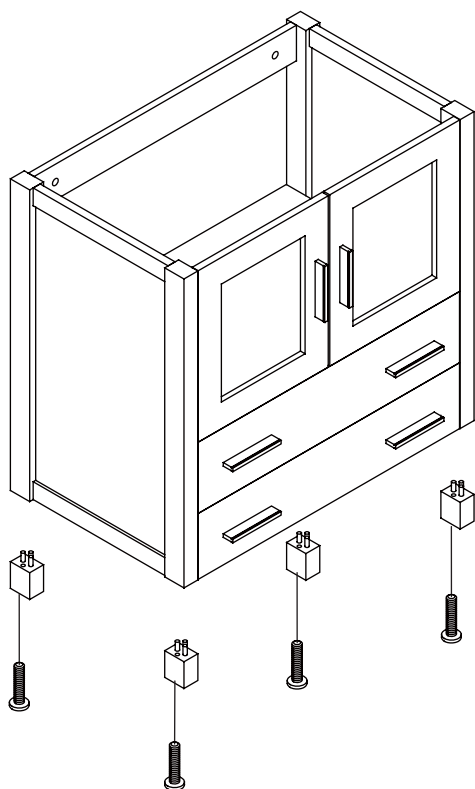


### INSTALLATION



**1**

Install leg



TORINO INSTALLATION GUIDE

PAGE 3

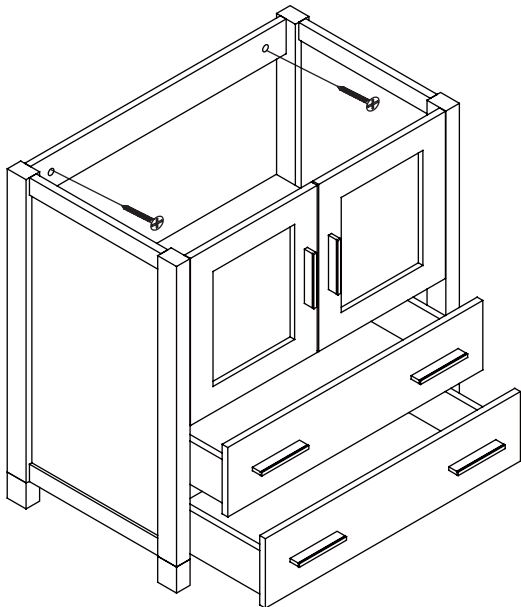
2

Remove drawer

3

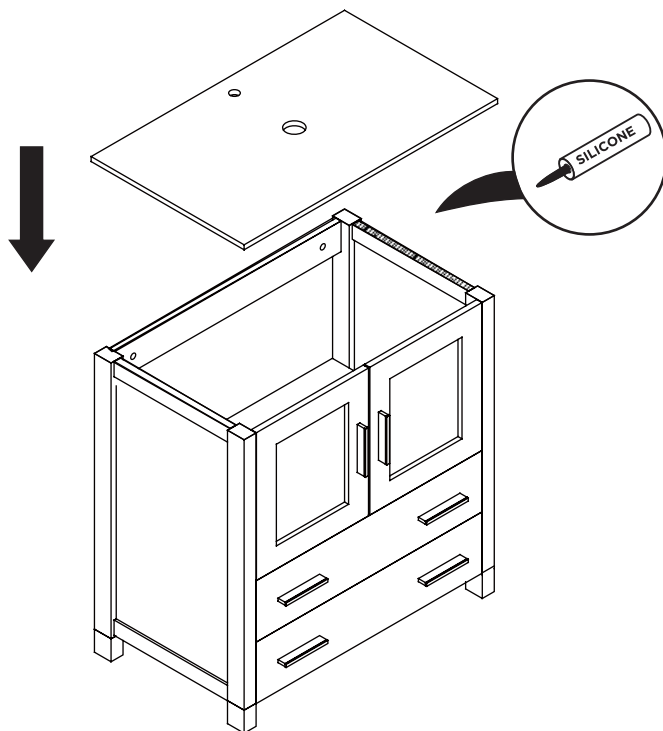
Install cabinet

**IMPORTANT:** Consult an expert for the proper screws/bolts to use when attaching to various wall constructions. Screws provided do not attach to all wall construction types.



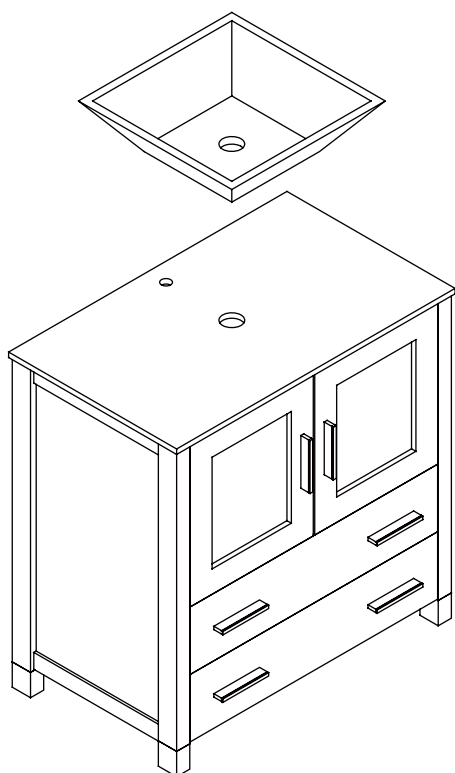
4

Install top panel



5

Install sink

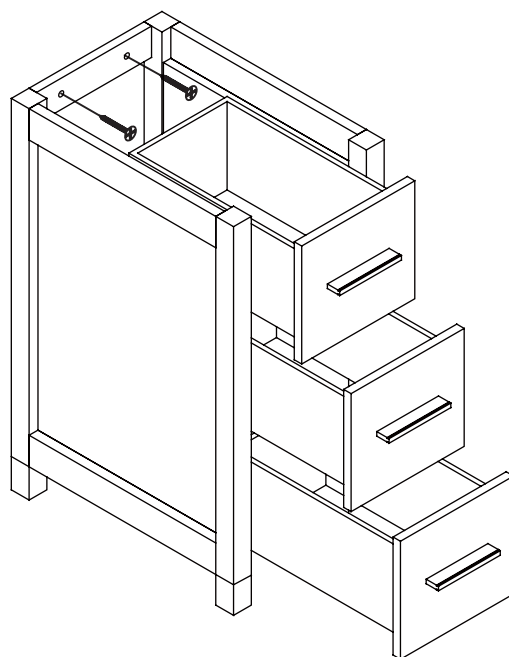


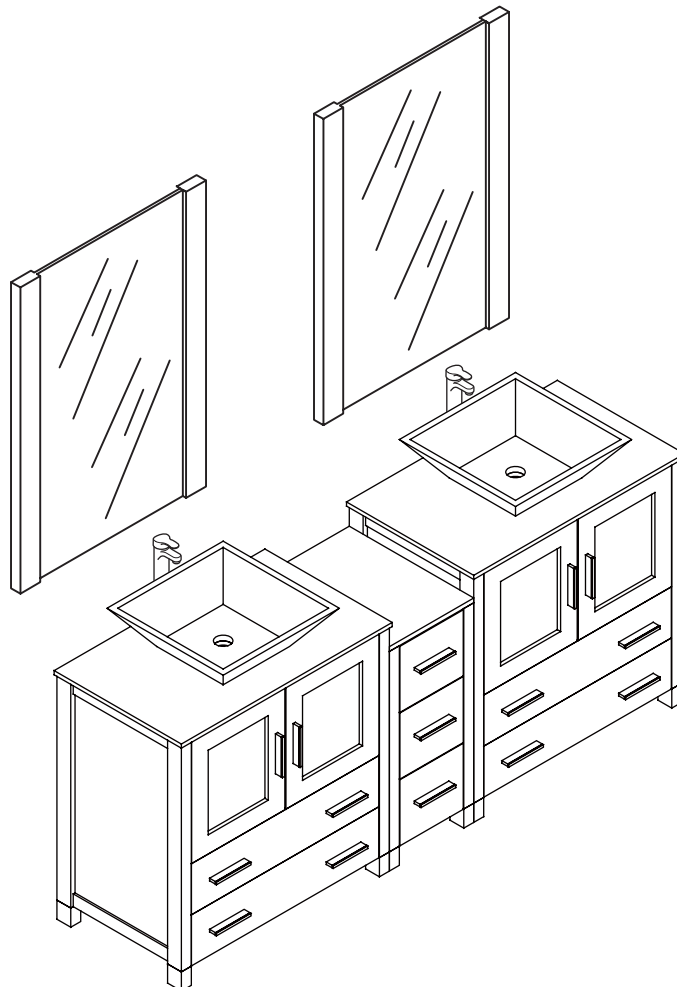
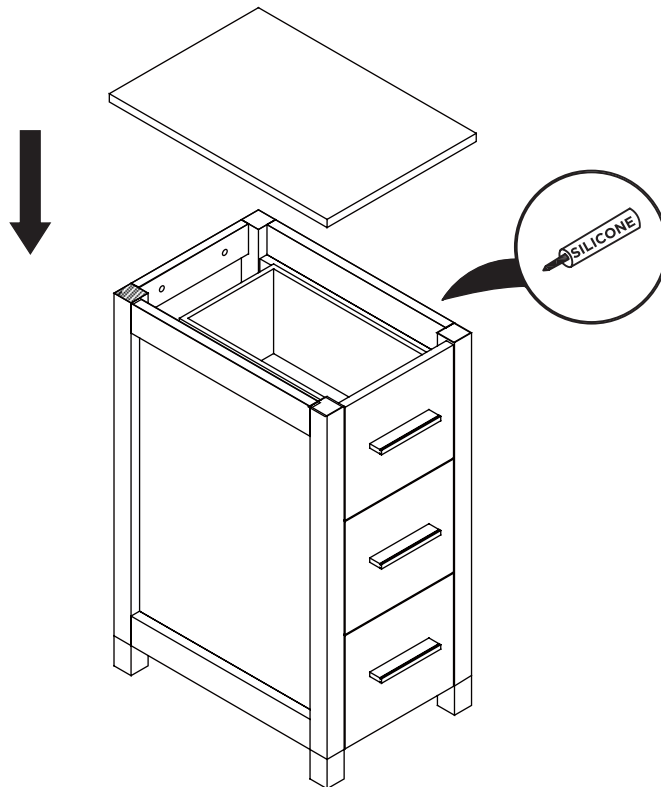
6

Remove side cabinet drawer

7

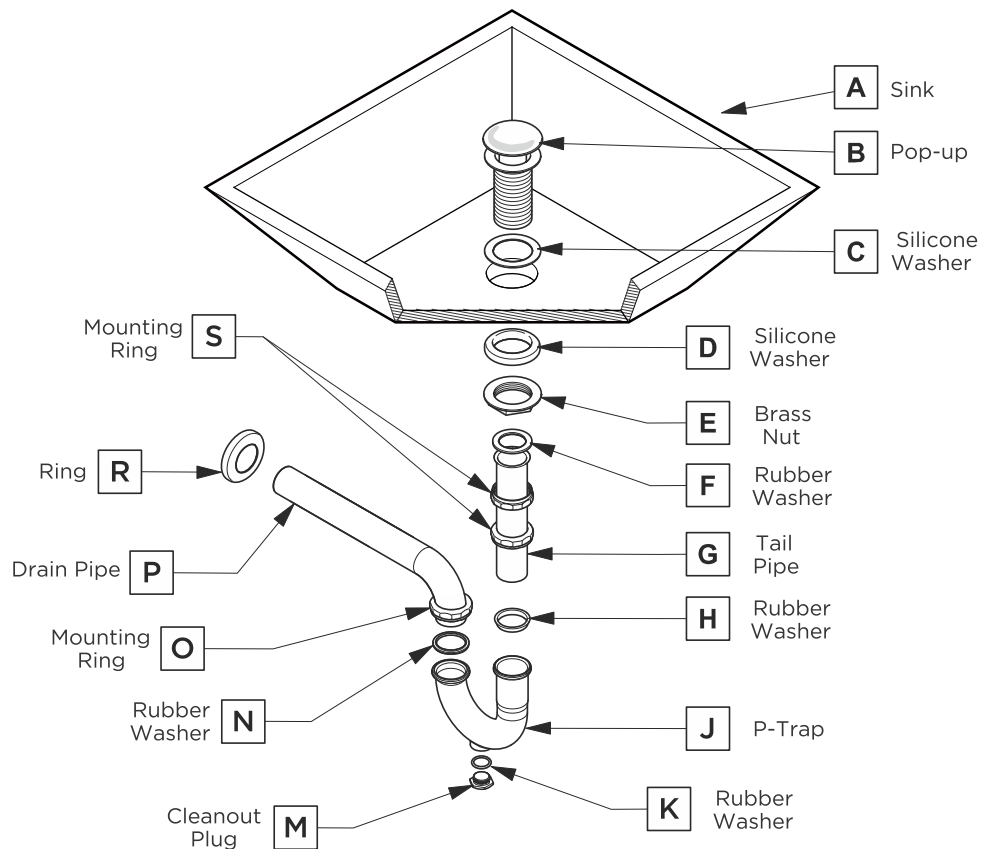
Install side cabinet





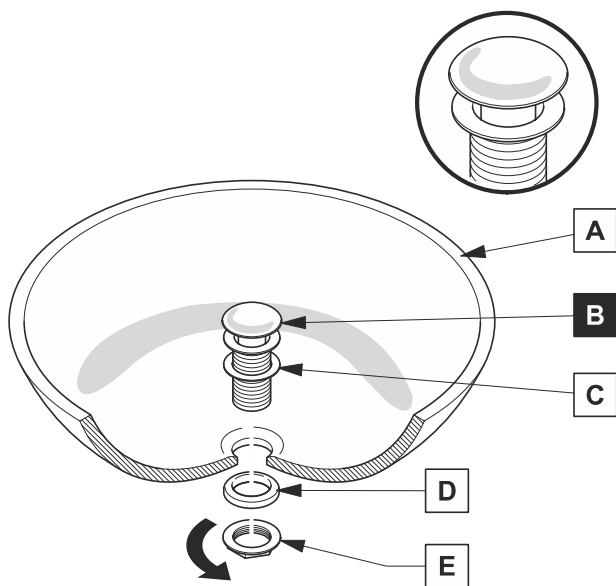
## P-TRAP AND POP-UP INSTALLATION INSTRUCTIONS

Your item may appear slightly different from the illustration



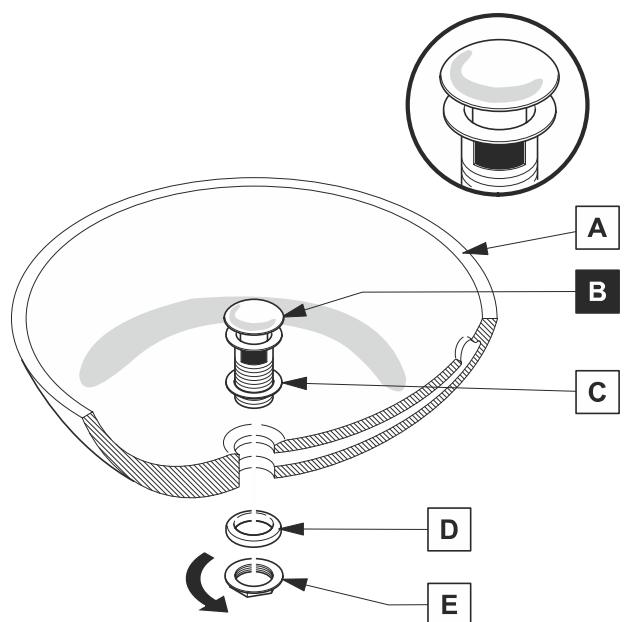
### POP-UP INSTALLATION

#### FOR SINKS WITHOUT OVERFLOW



OR

#### FOR SINKS WITH OVERFLOW



## 1

Diagram illustrating the rear suspension assembly, showing the connection between the rear axle and the rear spring plate. The diagram includes labels A, D, F, M, and G. A curved arrow indicates the rotation of the rear axle.

## 2