

ASTON KITCHEN CART

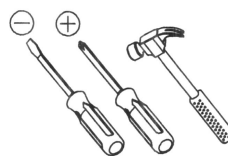
KC-033

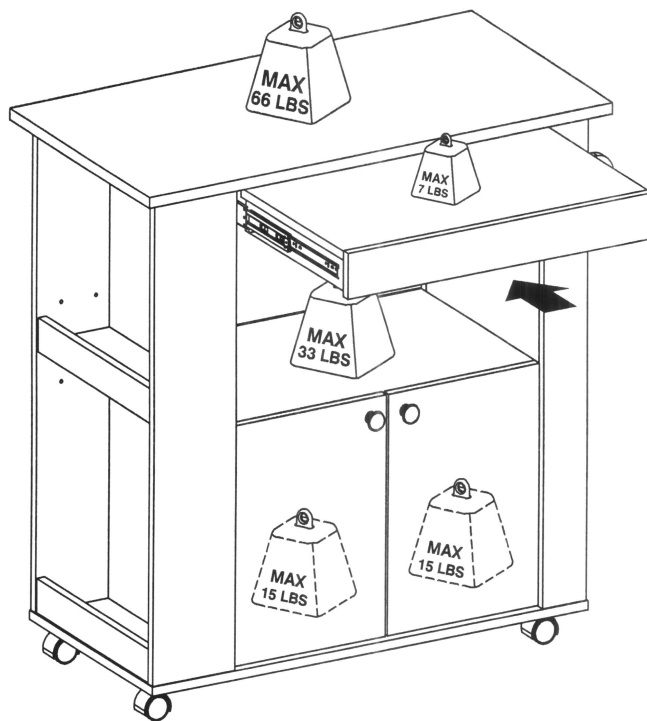


60 Minutes

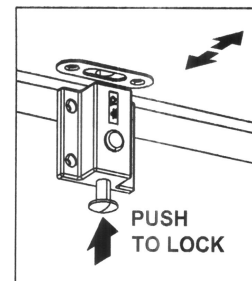


2 People

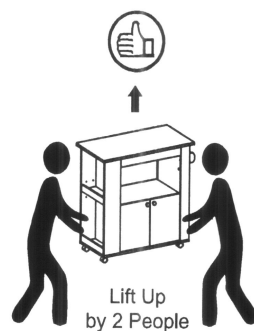
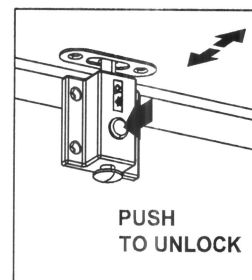




LOCK

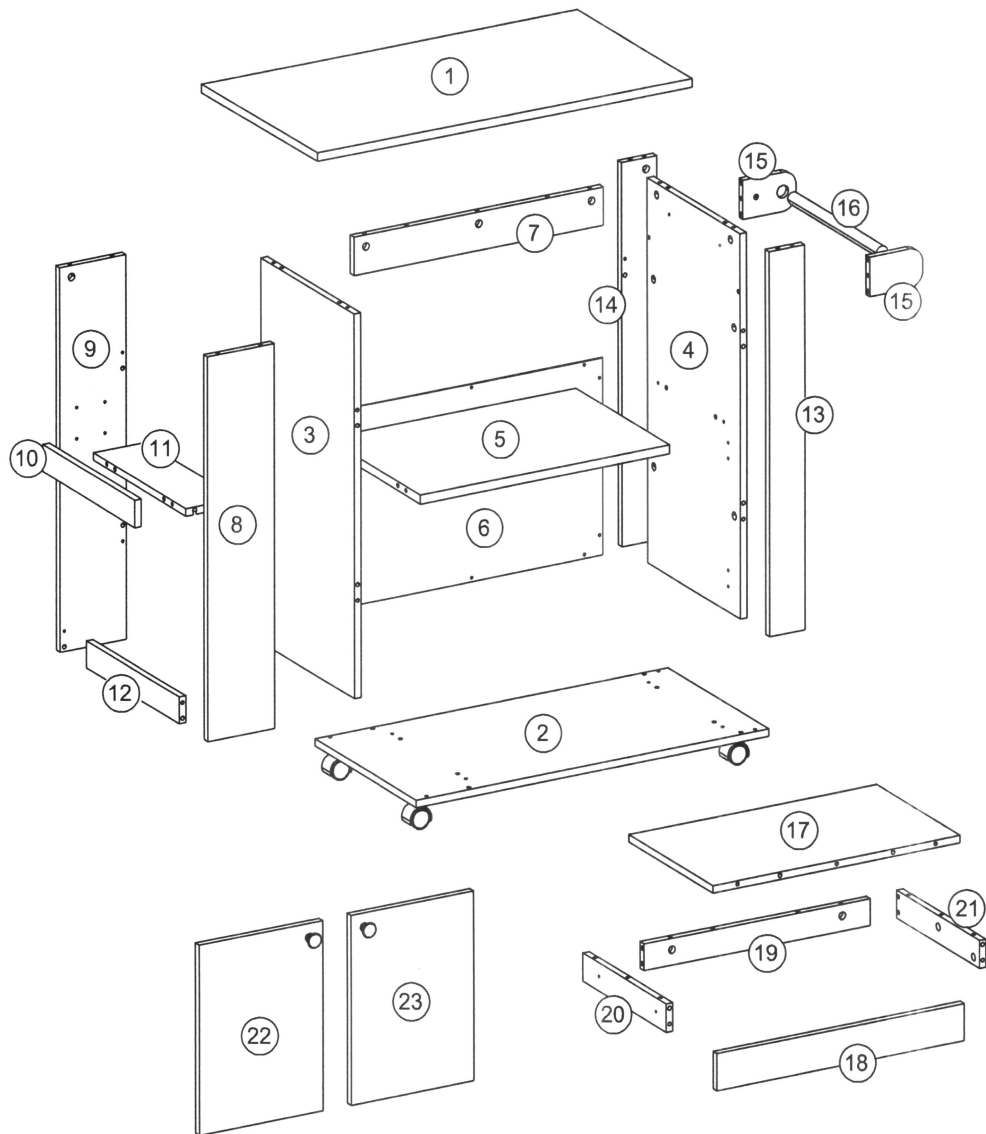


UNLOCK



1. The load in the illustration in the **PRODUCT INFORMATION** section is a load at rest with an even distribution on all surfaces.
2. Move this product by lifting, do not push because it can damage the legs.
3. When exposed to liquid, immediately clean using a soft cloth.
4. Do not put high temperature objects without using a base.
5. The surface of the product should not be exposed to chemical liquids. Example: thinner, nail polish.
6. Cleaning the product is enough with a dry cloth, but if necessary, you can use a damp cloth instead of a wet one.
7. Do not climb or hang on drawers, doors or shelves.
8. Place heavy objects in the bottom drawer.
9. The hinge can be adjusted so that the door is aligned and easy to open and close, setting the hinge slowly and not forced.
10. Surface lamination using PVC base material.
11. Do not place hot objects directly on the surface. Always use a heat sink. There is a risk of surface bubbles due to physical contact with hot objects due to evaporation of the adhesive layer between the wooden planks and the laminate layer.
12. Surface is resistant to liquid water.
13. There is a risk of damage to the board due to water infiltration through the side of the laminate and the surface of the laminate.

PARTS LIST

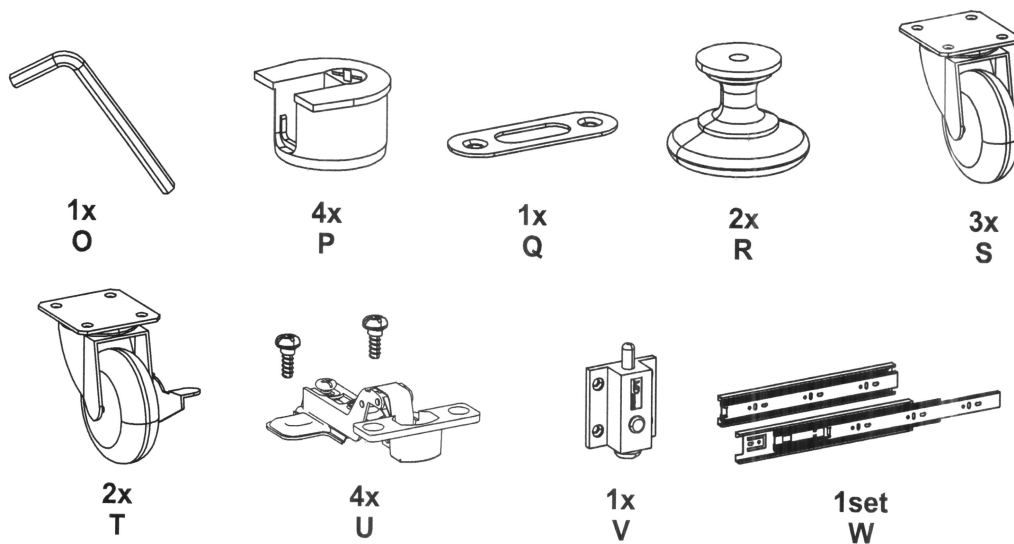
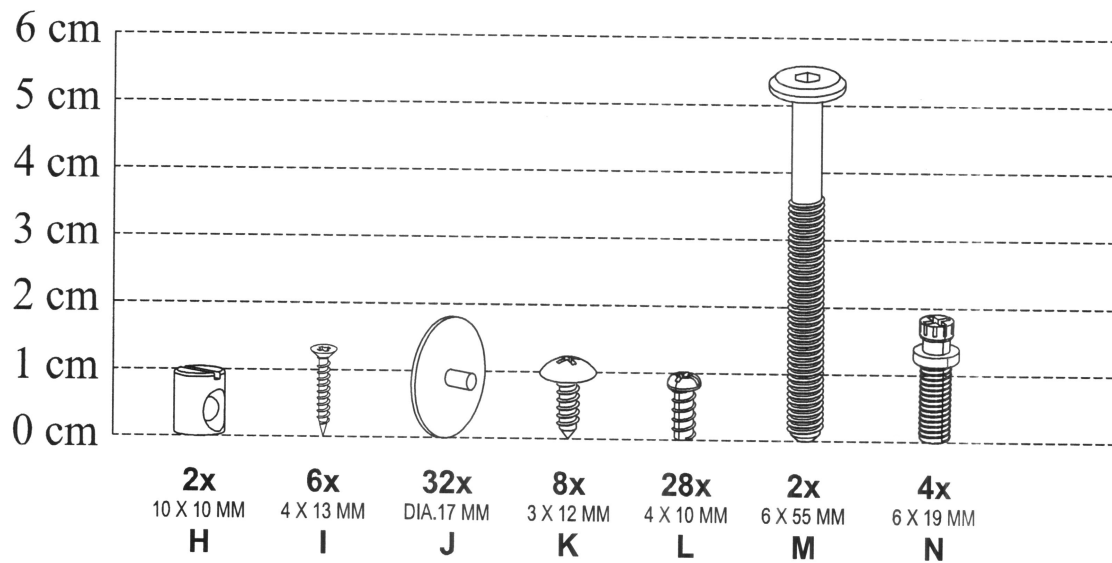
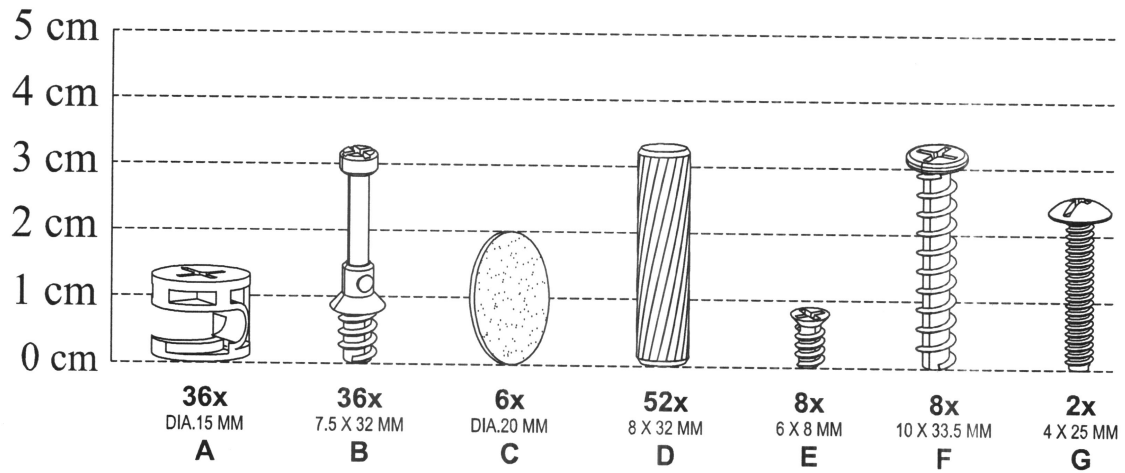


No.	Size	Qty
1	850 x 450 x 18 mm	1
2	800 x 395 x 15 mm	1
3	786 x 362 x 15 mm	1
4	786 x 392 x 15 mm	1
5	566 x 368 x 18 mm	1
6	596 x 400 x 2.5 mm	1
7	566 x 78 x 15 mm	1
8	786 x 150 x 15 mm	1

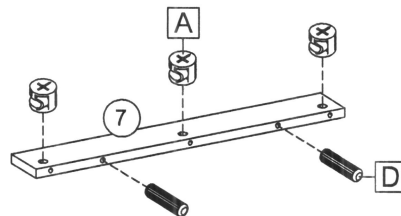
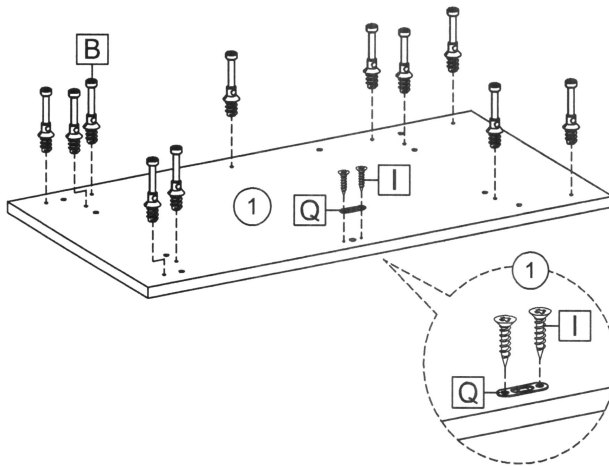
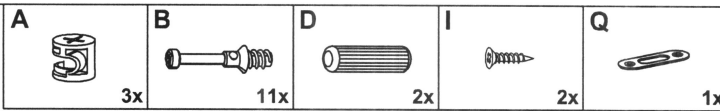
No.	Size	Qty
9	786 x 150 x 15 mm	1
10	361 x 55 x 15 mm	1
11	361 x 117 x 15 mm	1
12	361 x 55 x 15 mm	1
13	786 x 80 x 15 mm	1
14	786 x 80 x 15 mm	1
15	120 x 84 x 15 mm	2
16	Ø 25 x 348 mm	1

No.	Size	Qty
17	560 x 327 x 15 mm	1
18	560 x 75 x 15 mm	1
19	511 x 55 x 15 mm	2
20	327 x 57 x 15 mm	1
21	327 x 57 x 15 mm	1
22	385 x 278 x 15 mm	1
23	385 x 278 x 15 mm	1

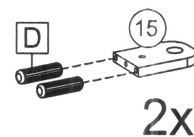
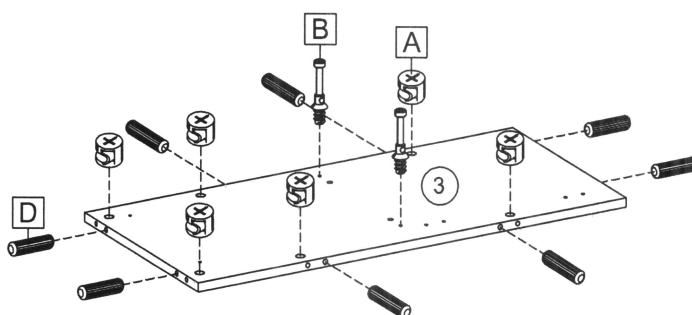
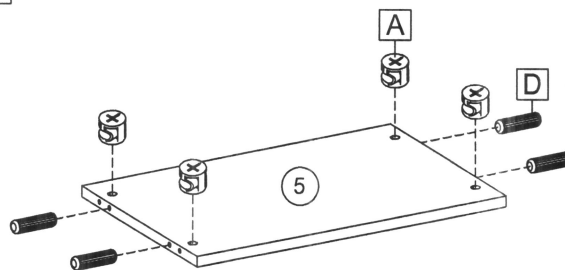
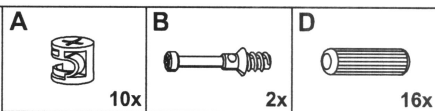
HARDWARE LIST



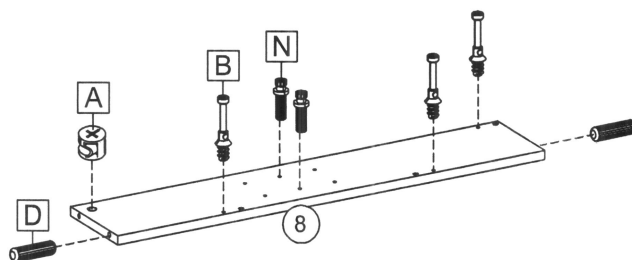
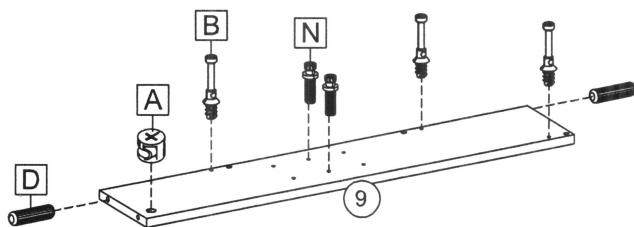
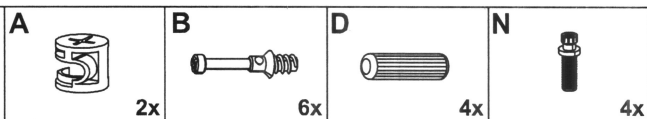
1



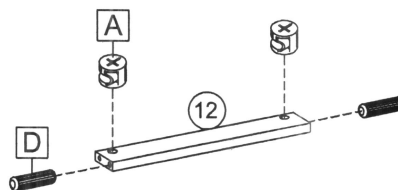
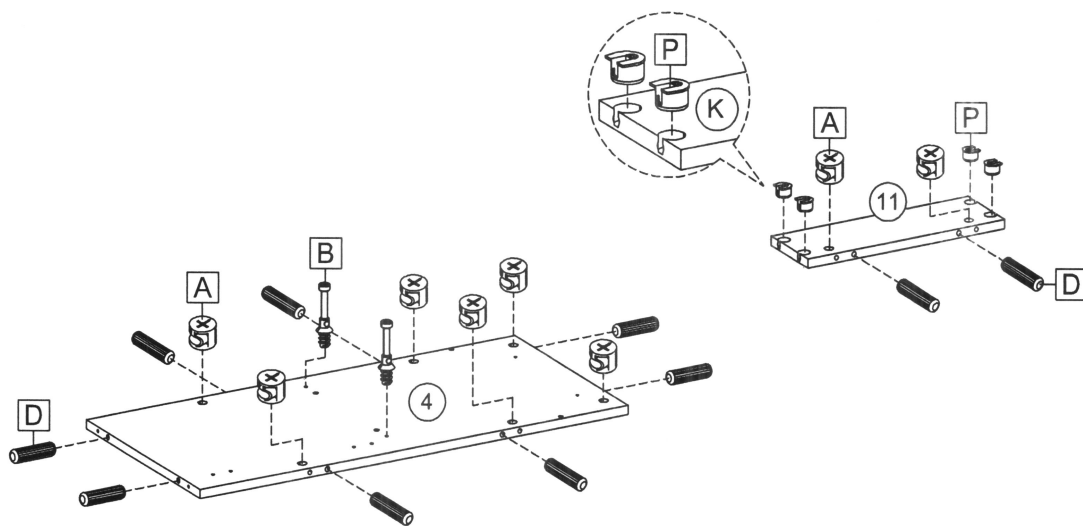
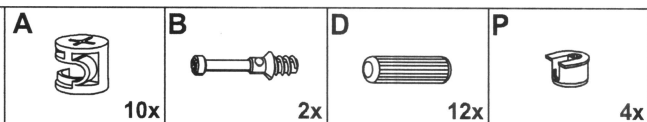
2



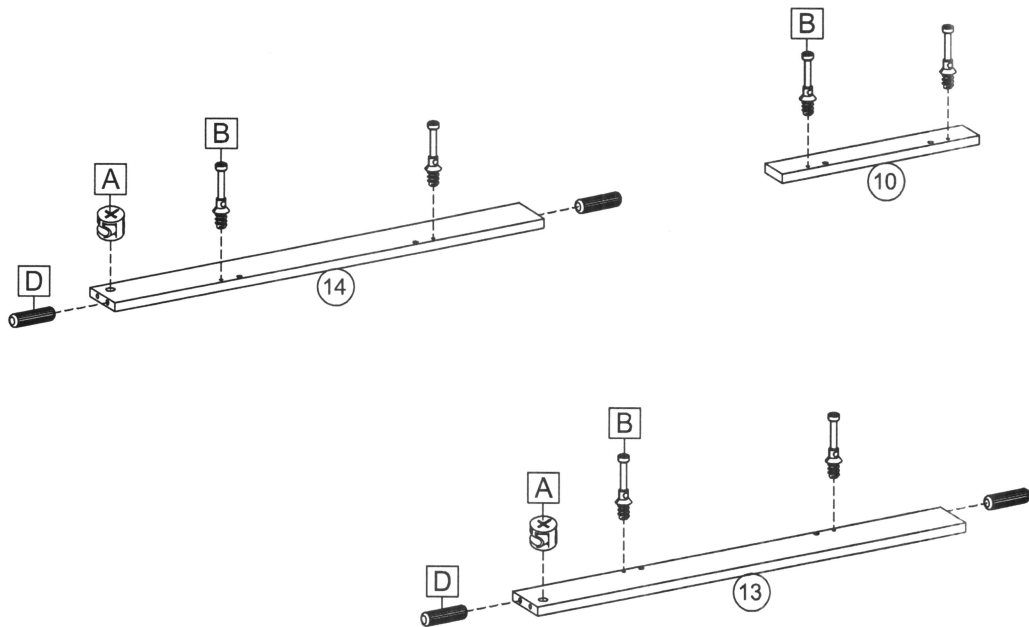
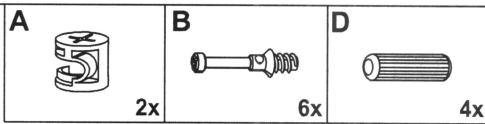
3



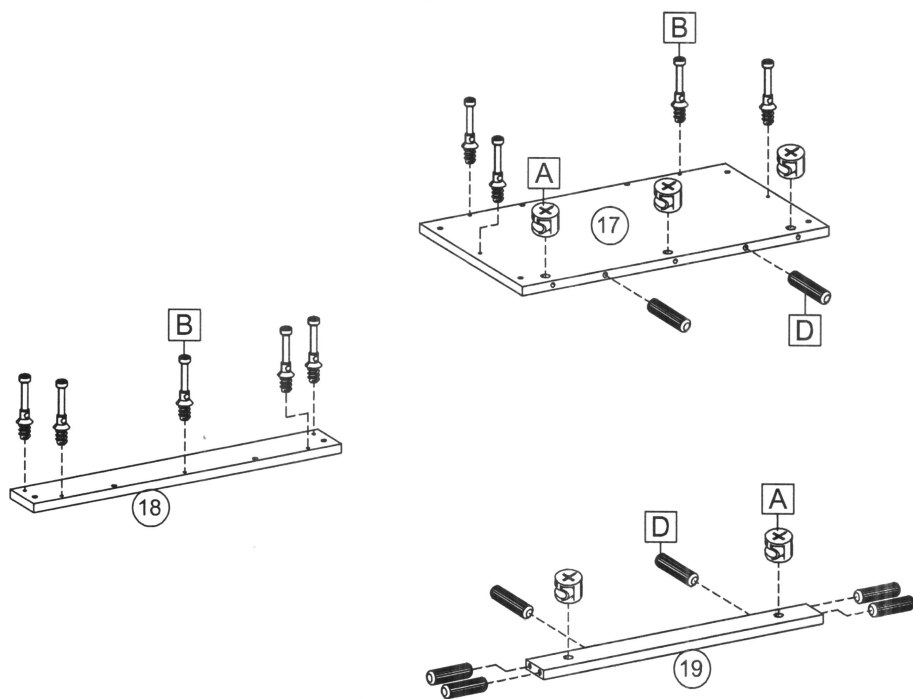
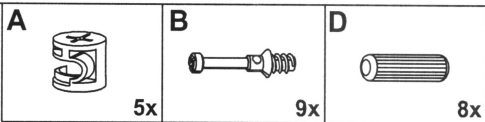
4



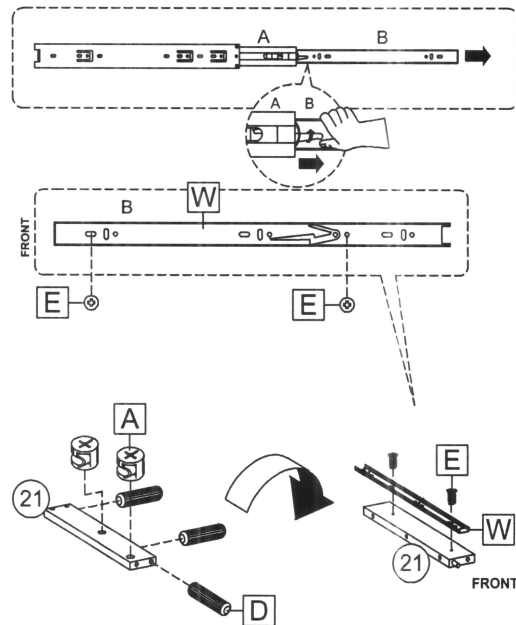
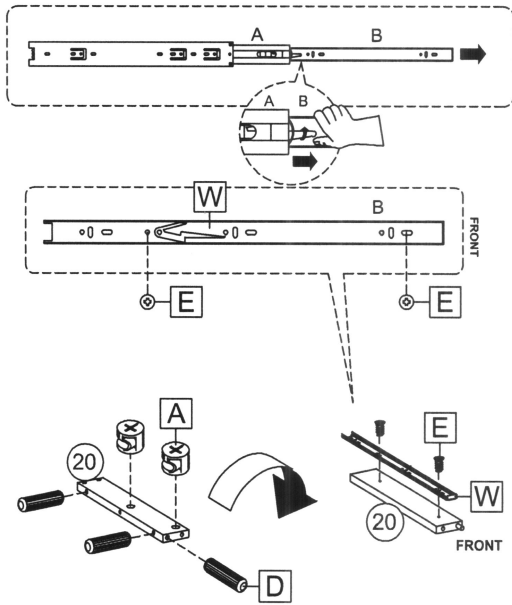
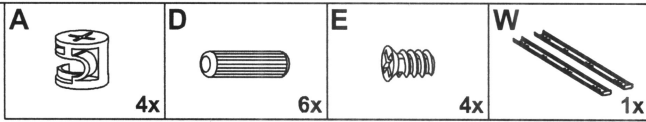
5



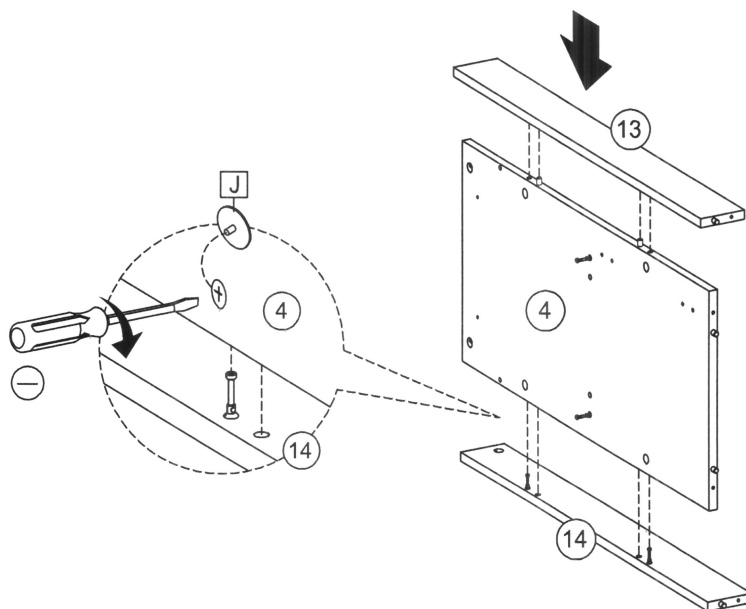
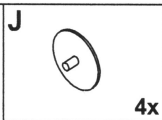
6



7



8

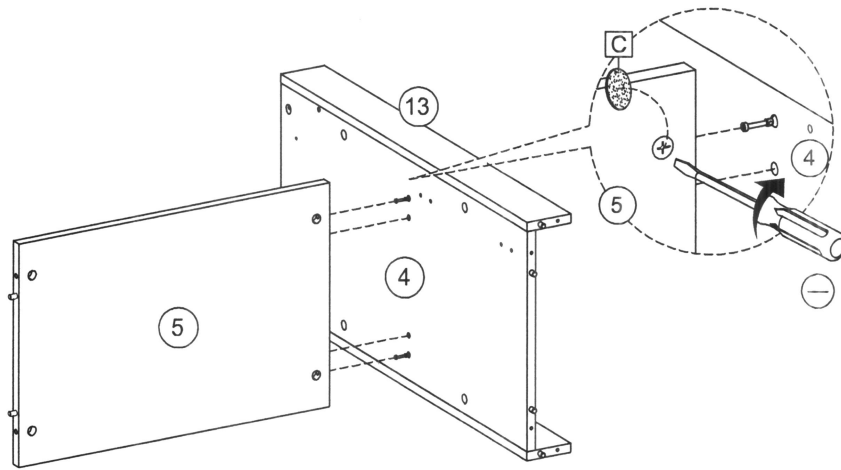


9

C



2x

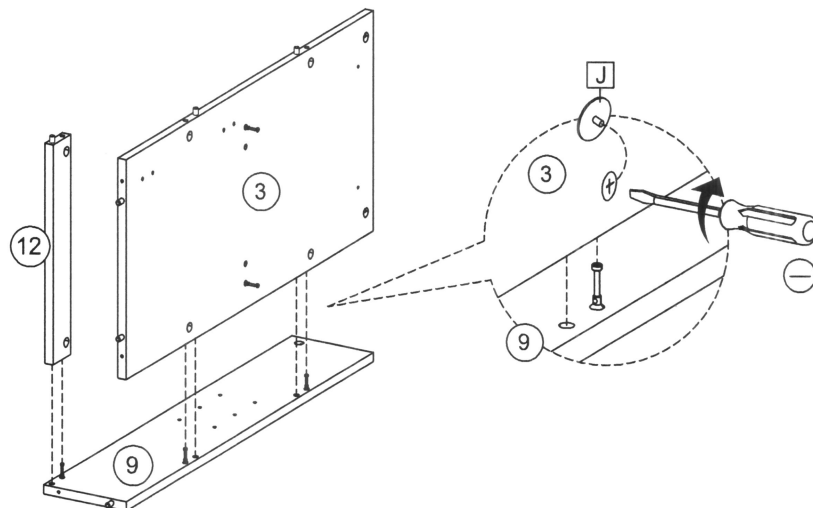


10

J



3x

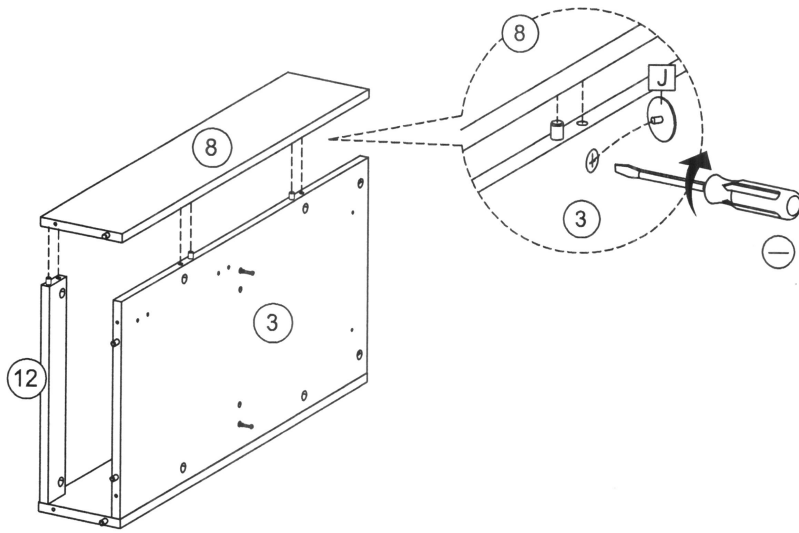


11

J



3x

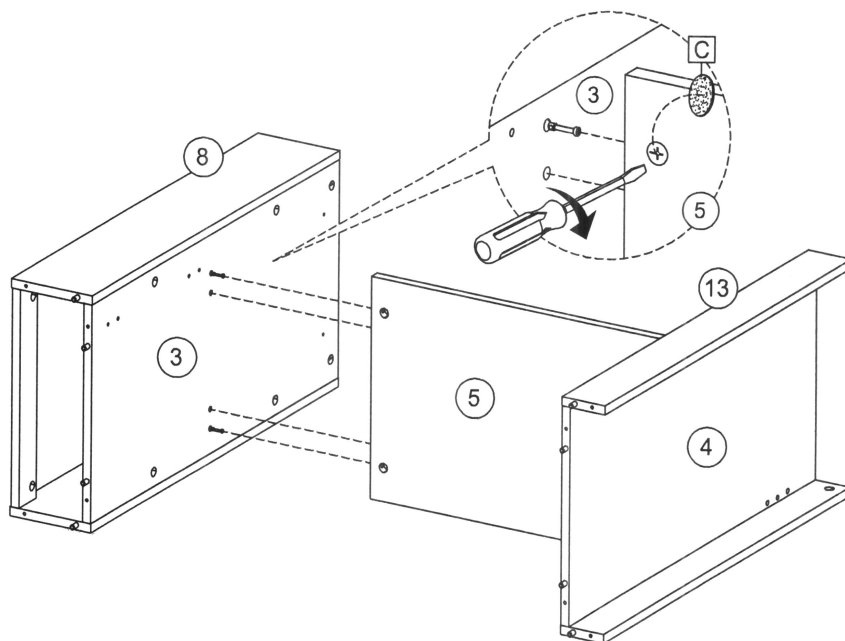


12

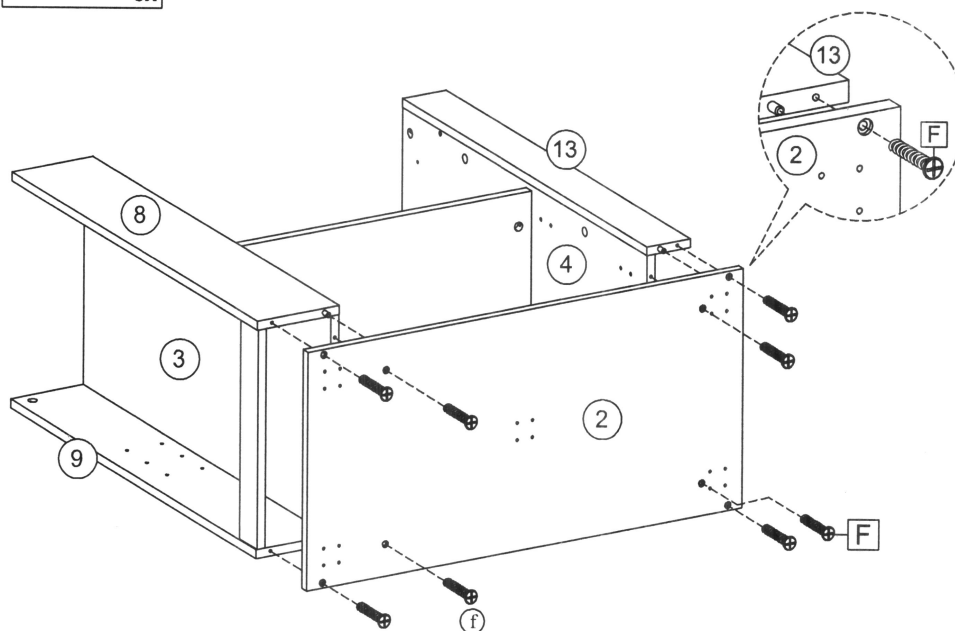
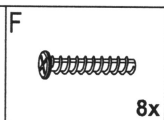
C



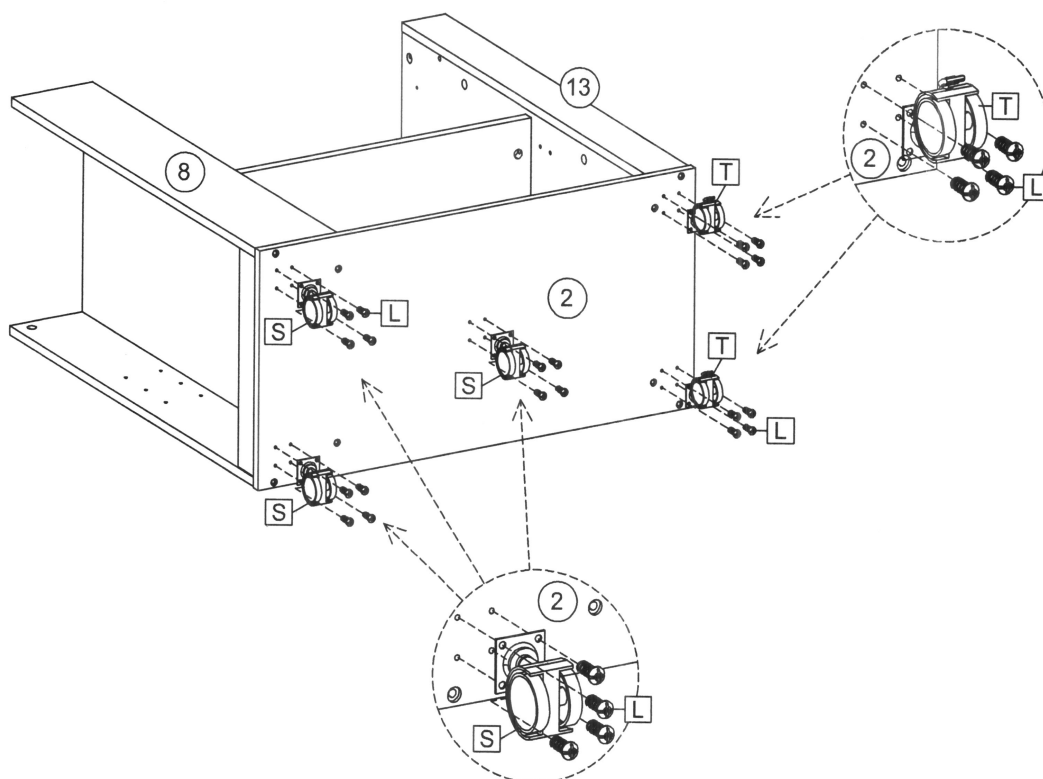
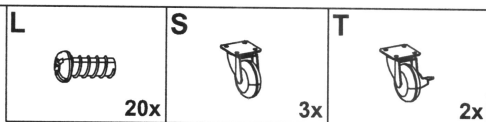
2x



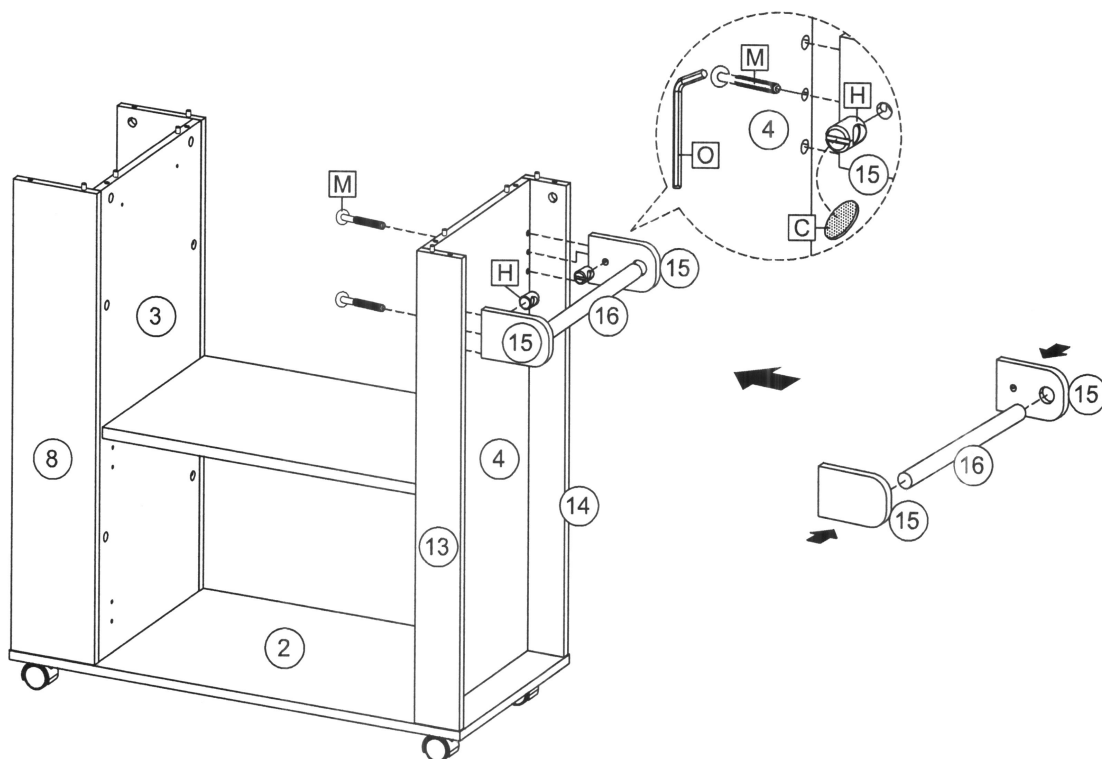
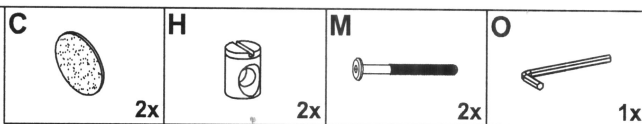
13



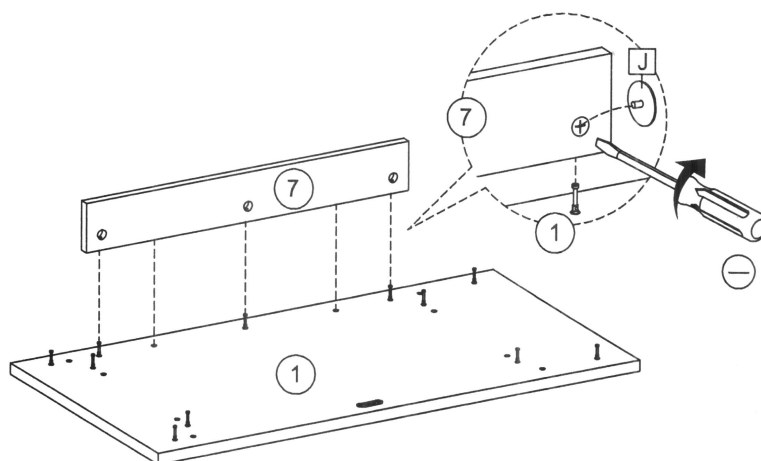
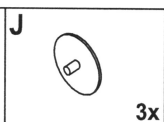
14



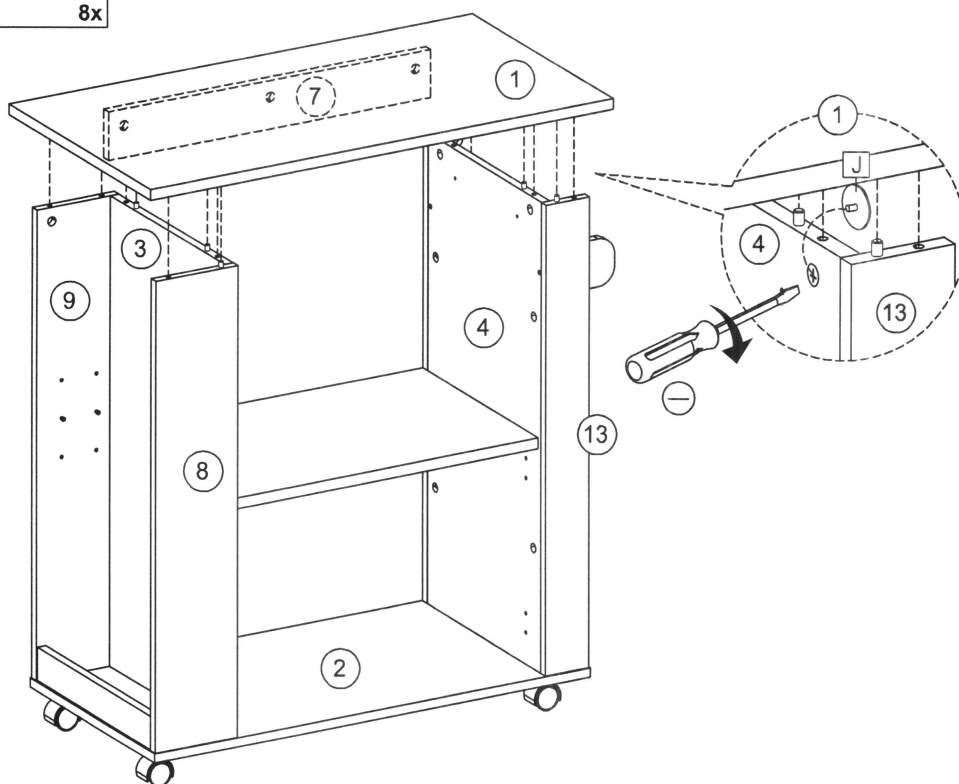
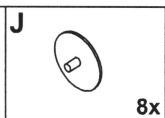
15



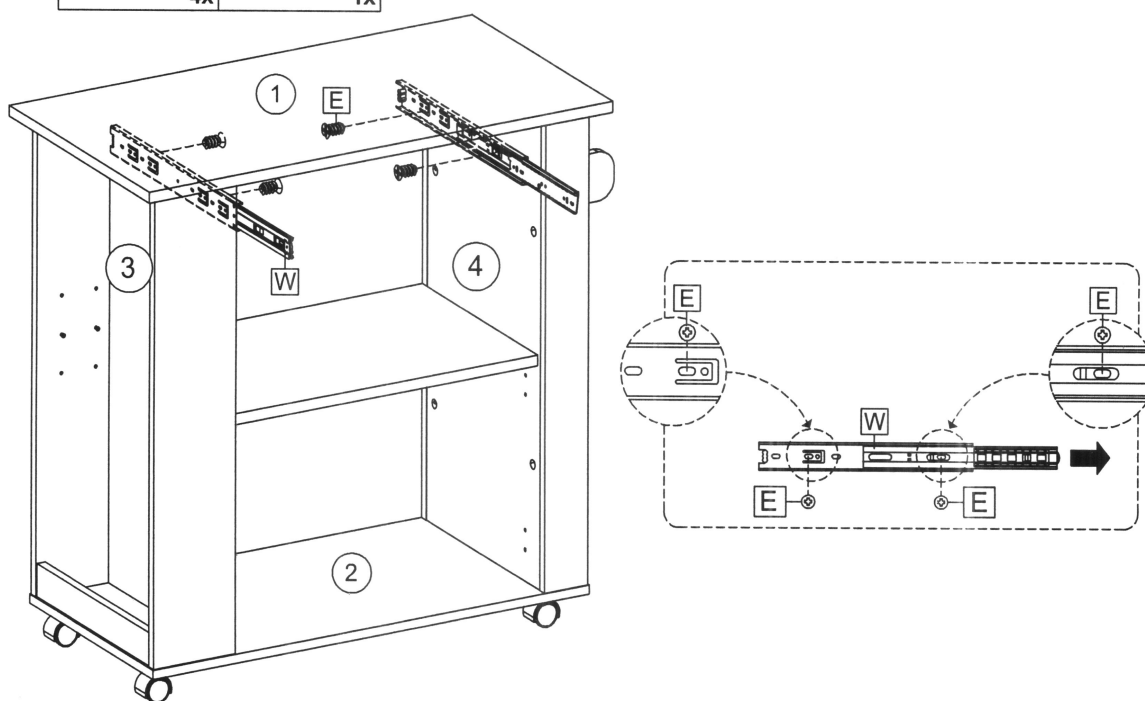
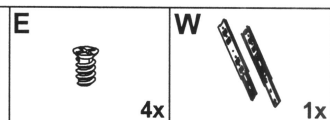
16



17



18

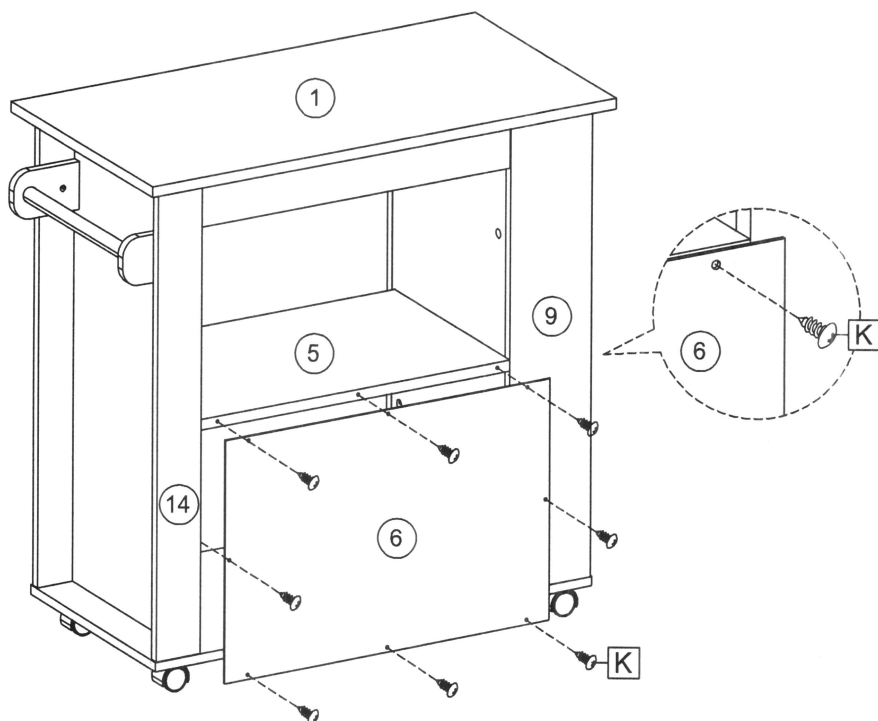


19

K



8x

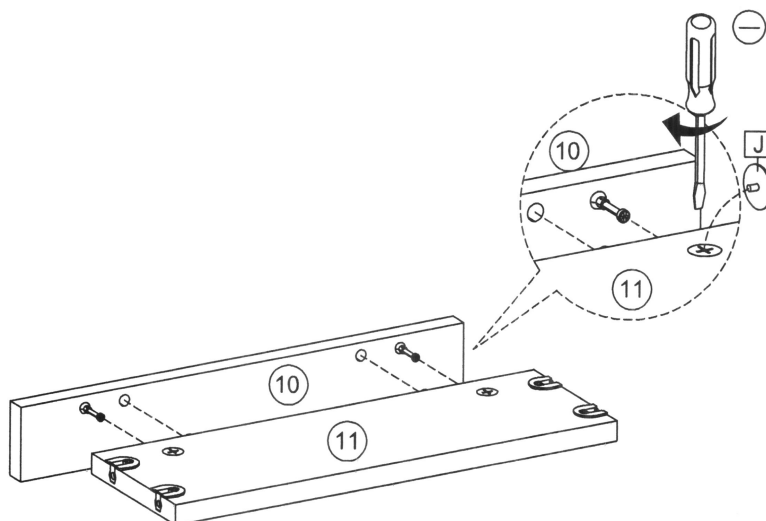


20

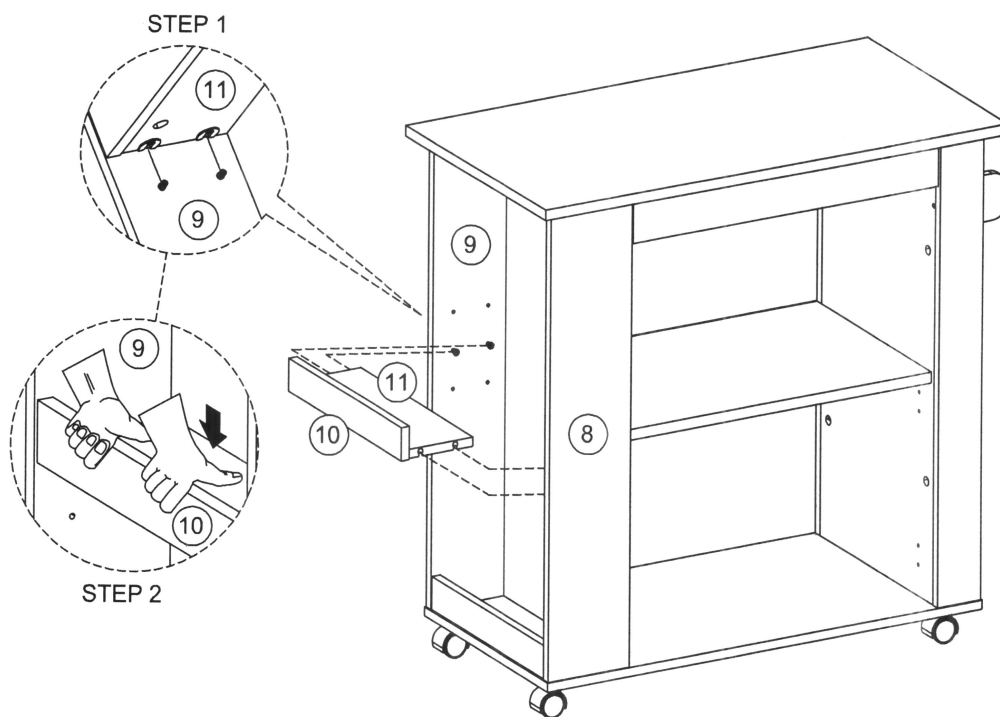
J



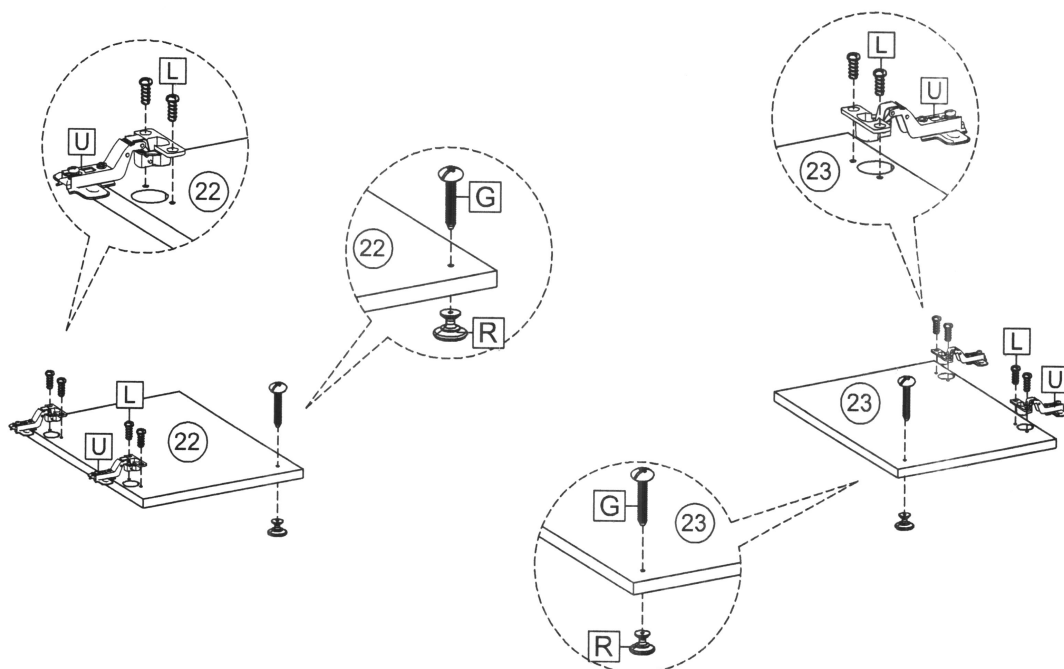
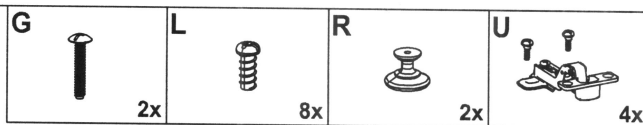
2x



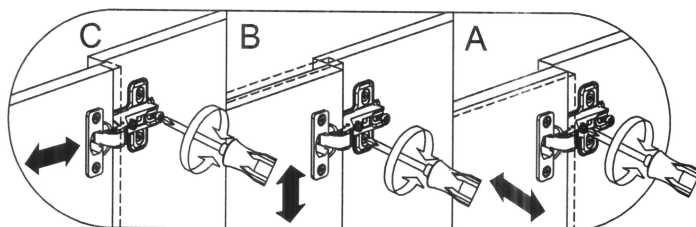
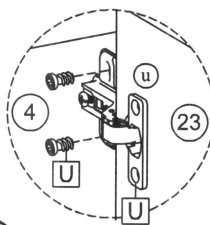
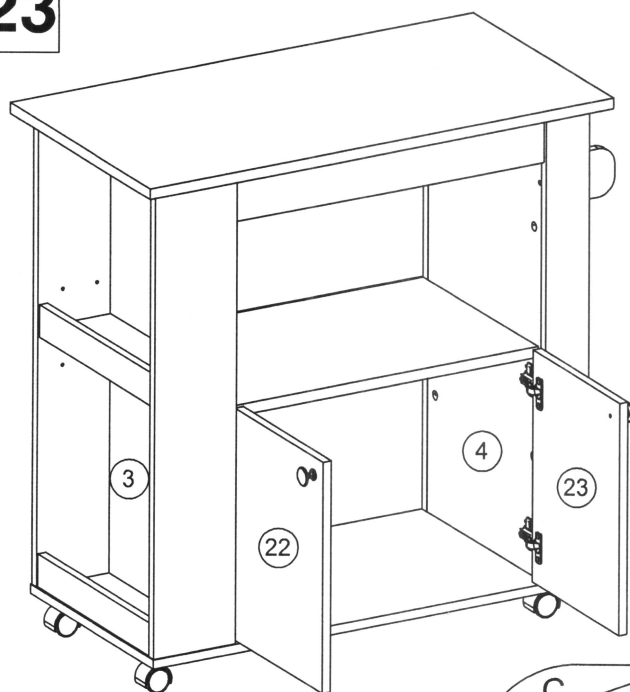
21



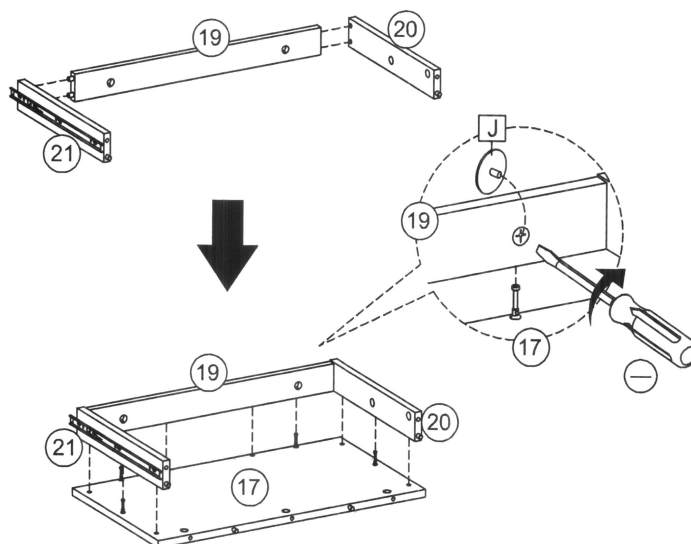
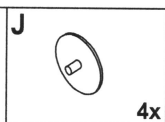
22



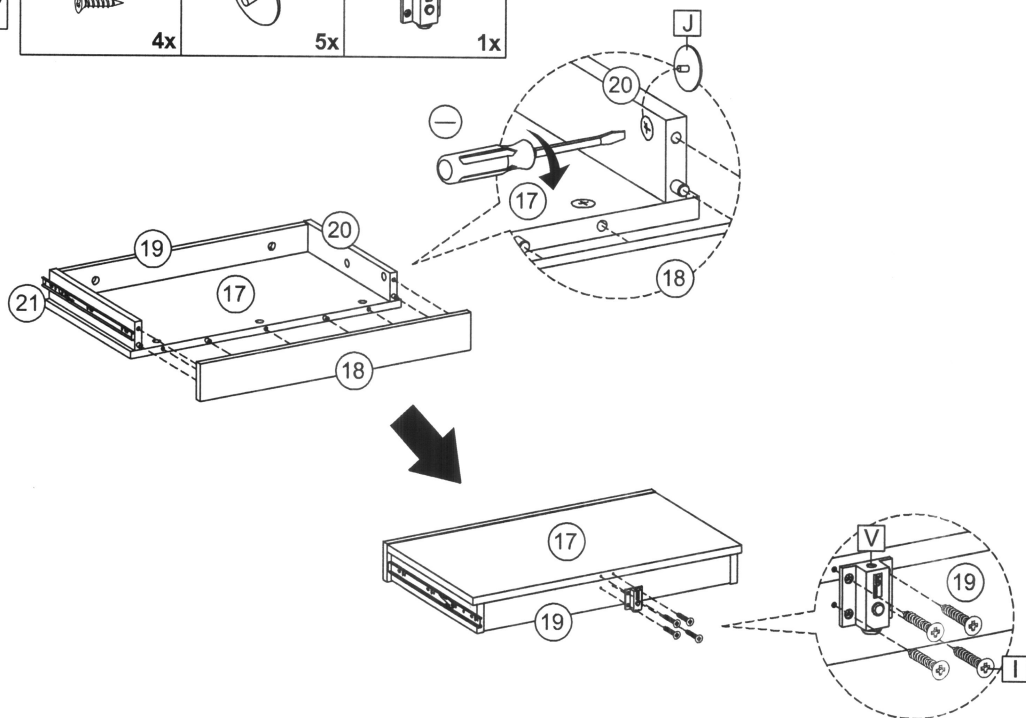
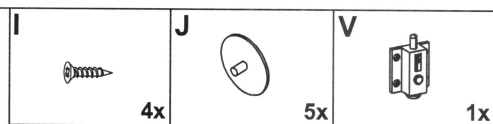
23



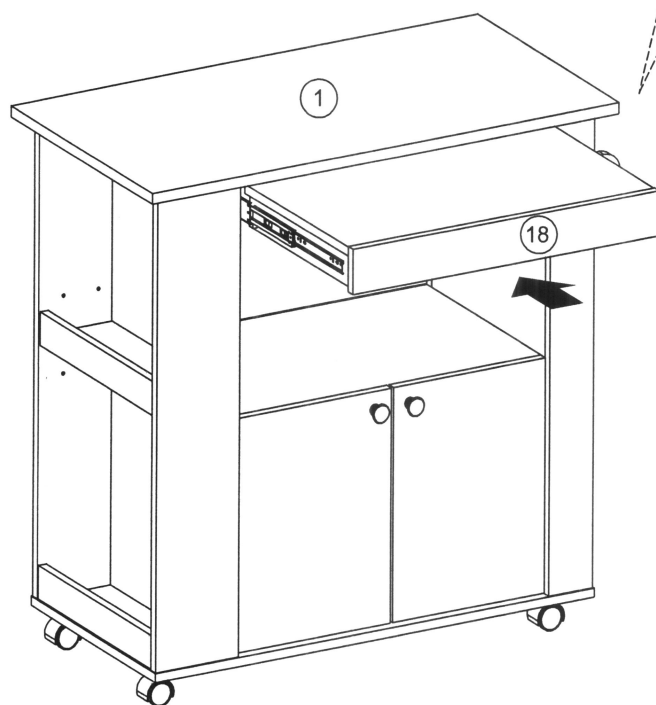
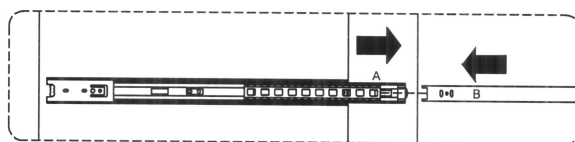
24



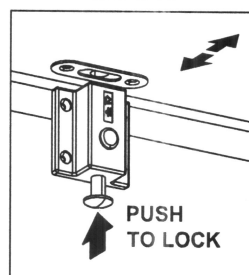
25



26



LOCK



UNLOCK

