



BALDUR

FACE MOUNT

Modern, elegant sliding door hardware with a patented, industry-unique hubless design. Custom massive bearings provide Baldur's iconic movement. Made from high grade stainless steel and aluminum for a lifetime of flawless performance.

UNIQUE FEATURES

- Tru-Level™ System provides 1/4" vertical and lateral adjustment at each mounting point
- Vertical panel adjustment for 1/4" of out-of-plumb adjustment
- Fully adjustable door stops
- Cut and drill track in field with commonly available tools
- Designed and manufactured in Portland, Oregon USA

TRACK

- 12" increments between 4' and 13'
- Track Connectors available for installations where longer track lengths are required
- Predrilled or undrilled
- Made-to-measure available for any length and drill pattern

COMPATIBLE WALL TYPES

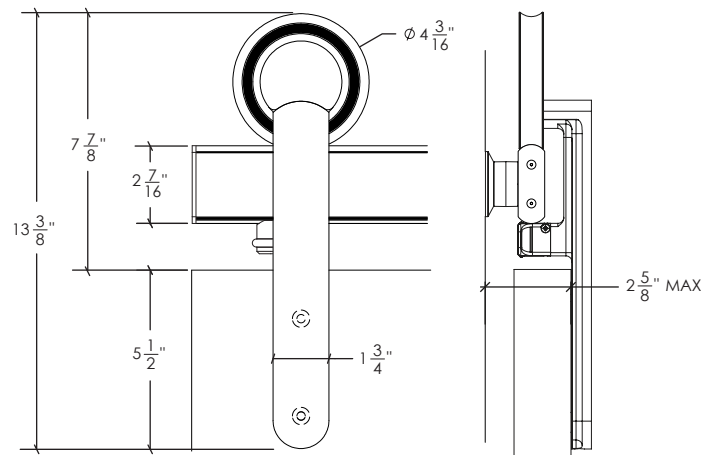
- Framed Wood Wall (blocking required)
- Glass Wall
- Steel Beam
- Concrete

OPTIONAL ACCESSORIES

- Door Pulls
- Drywall Inserts
- Shim Kits
- Bottom Stop
- Door Guide Channel
- Perpendicular Wall Fitting

TECHNICAL DETAILS

- Below ADA requirement for pull force at full weight
- Panel thickness: 3/4" to 2-1/2" (contact us for panels outside this range)
- 10 year warranty



QUICK LOOK

FINISH OPTIONS

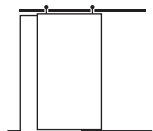


Brushed Stainless

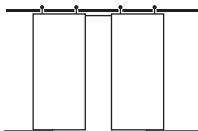


Black Stainless

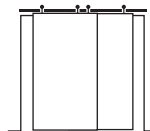
CONFIGURATIONS



Single



Bi-Parting



Bypassing

WEIGHT CAPACITY

400lb (contact us if your door panel is heavier)

VOLUME PRICING

Available for orders over 10 units

ORDERING

To order Baldur Face Mount, contact:
support@krownlab.com
 503-292-6998

MORE INFORMATION

For all spec sheets visit:
www.krownlab.com/baldur