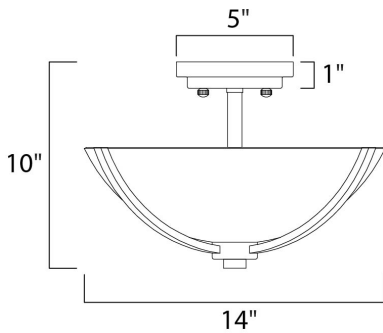




#### PRODUCT DESCRIPTION

Intersecting arms finished in your choice of Satin Nickel or Oil Rubbed Bronze support tall, cylindrical Satin White glass shades for a spectacular and transitional look.



#### MEASUREMENTS

DIMENSION : 14" L x 14" W x 10" H  
HANGING WEIGHT : 3.63 lb

#### LAMPING

INPUT VOLTAGE : 120V  
BULB : 3 x 60W Incandescent E26 Medium , 180W Total  
BULB INCLUDED : (Not Included)  
DIMMABLE : Yes

#### FINISHES OPTION

 Oil Rubbed Bronze  
 Satin Nickel

#### GLASS

Satin White SW

#### MATERIAL

Steel, Glass

#### RATINGS

cETLus  
Dry Location



#### ADDITIONAL

OPERATING TEMPERATURE:  
-20°C (-4°F), 40°C (104°F)

Always consult a qualified electrician before installing any lighting product.



**WESTERN DISTRIBUTION CENTER (HEADQUARTER)**  
253 NORTH VINELAND AVE | CITY OF INDUSTRY, CA 91746

**EASTERN DISTRIBUTION CENTER**  
4200 SHIRLEY DR. | ATLANTA, GA 30336

P. 626.956.4200 | F. 626.956.4225 | maximlighting.com