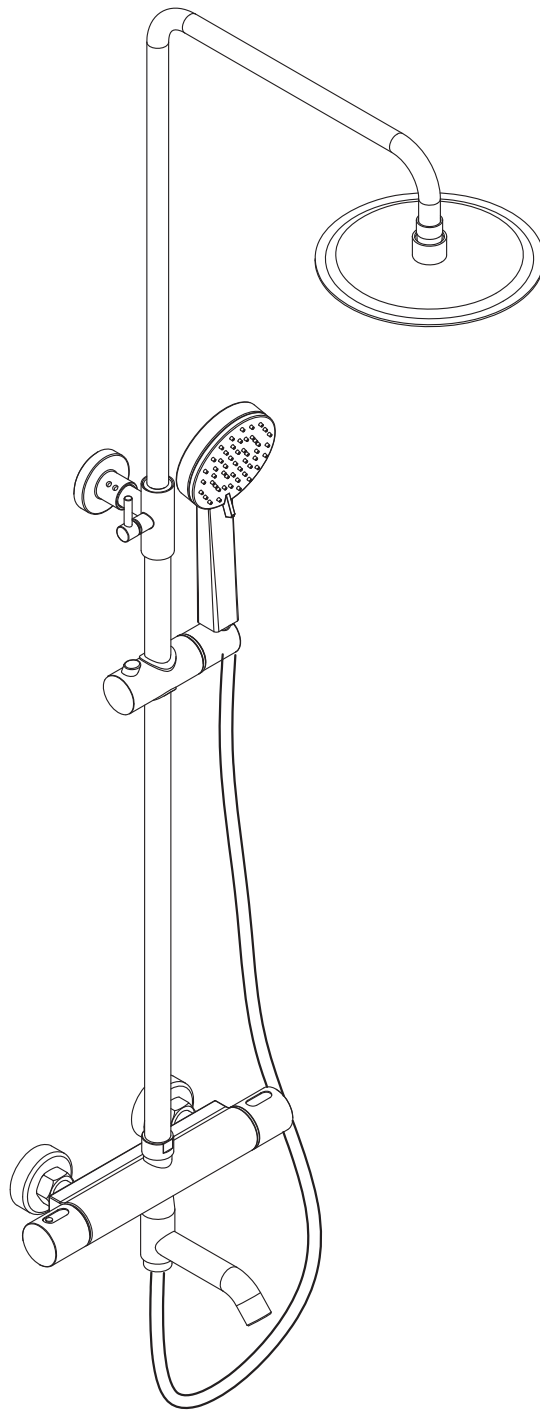


Specifications



DESCRIPTION

- Thermostatic Shower Column Set
- Brass Construction

FLOW

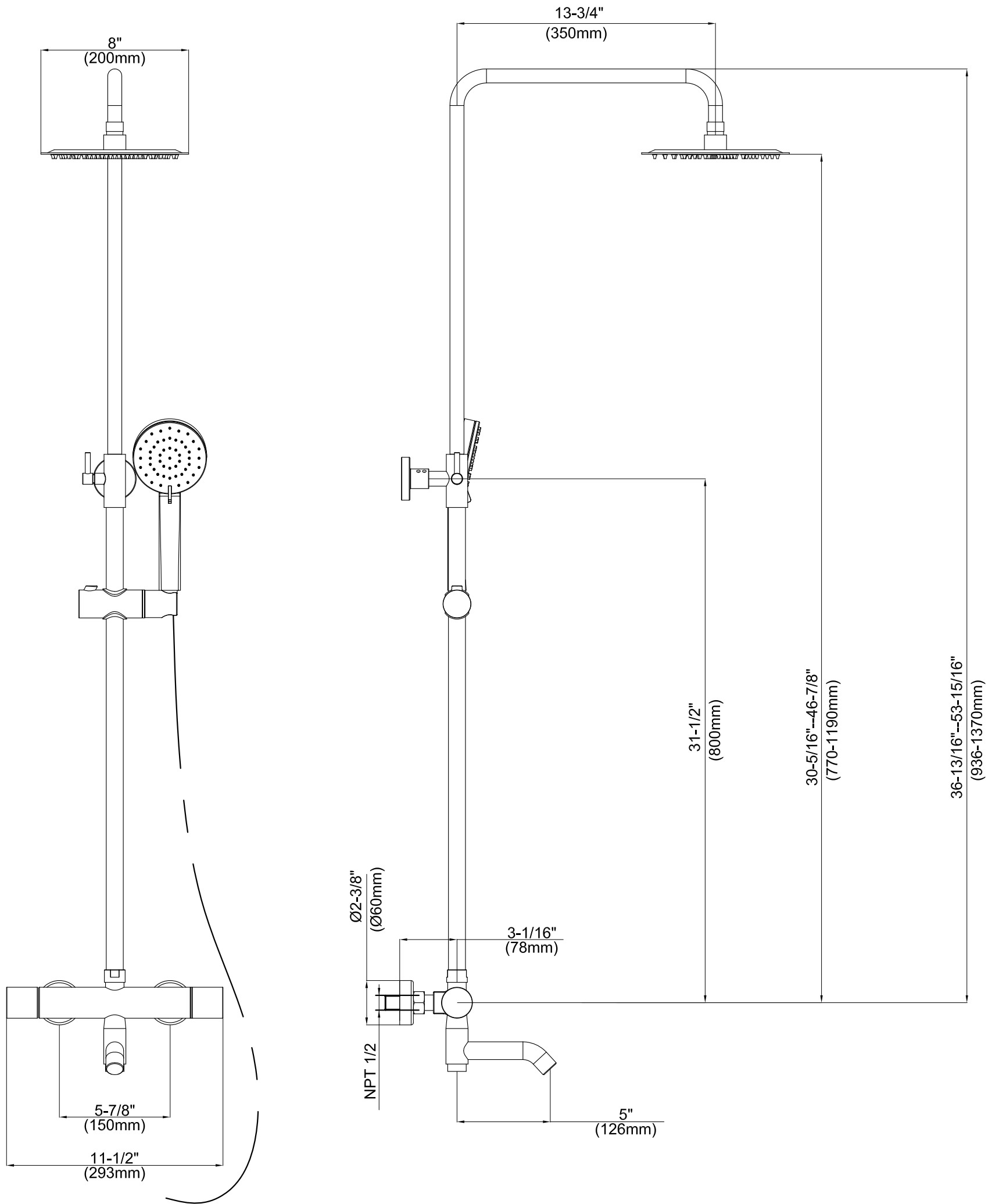
- Showerhead is limited to 2.0 gpm(7.5L/min) at 80psi
- hand shower is limited to 2.0 gpm(7.5L/min) at 80psi

CARTRIDGE

- Ceramic disk cartridge

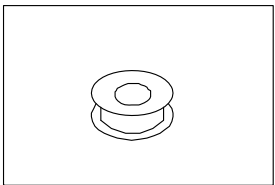
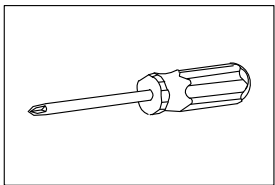
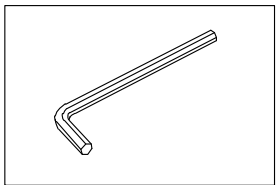
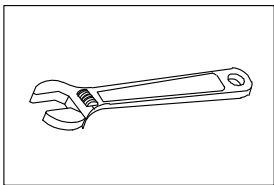
WARRANTY

- 10 years limited warranty against leaks, drips and finish defects to the original consumer purchaser
- 5 year warranty if used in commercial installations



CRITICAL DIMENSIONS

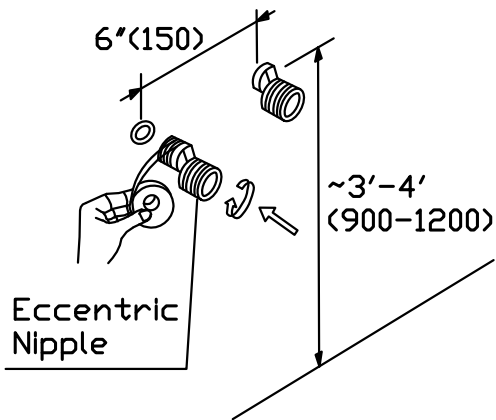
INSTALLATION MANUAL Tools You Will Need :



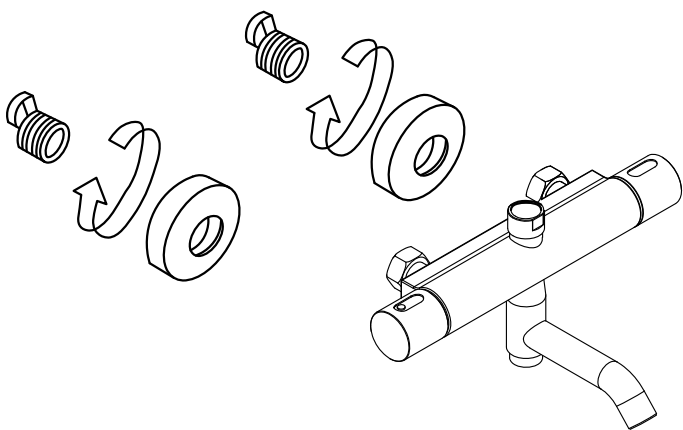
Adjustable wrench Hexagon wrench Philips Screwdriver Pipe Tape

Notes before installation :

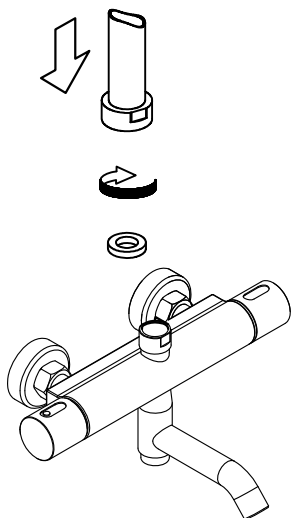
- 1.Please check that all components are present.
- 2.Before installation ensure that all feed lines are clear of debris and on/off valve is present.
- 3.Ensure water pressure is between 20-125 PSI (Includes combination of hot and cold feed lines).
- 4.Pictures in the manual are general in content and may not represent exactly your purchased faucet.
- If you are having difficulties please contact a professional plumber.
- 5.If you will be away from home for an extended period you should shut off the main water supply.



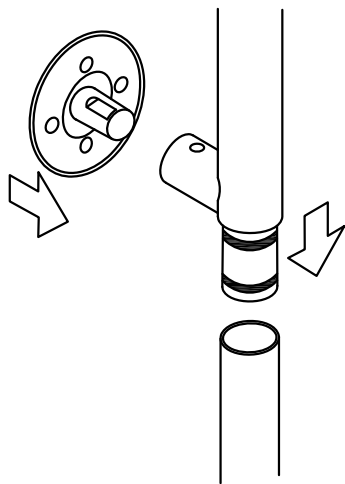
Step 1
Apply pipe sealant to treads of eccentric nipples; connect eccentric nipples onto inlet pipes.



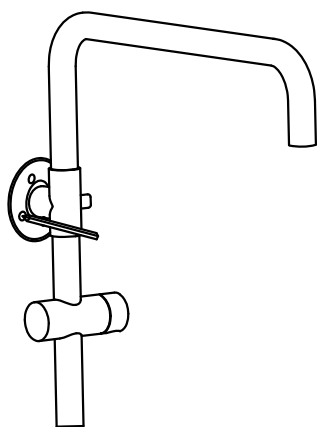
Step 2
Install eccentric nipples with decorative covers then insert gasket and nut and tighten onto eccentric nipples with wrench.



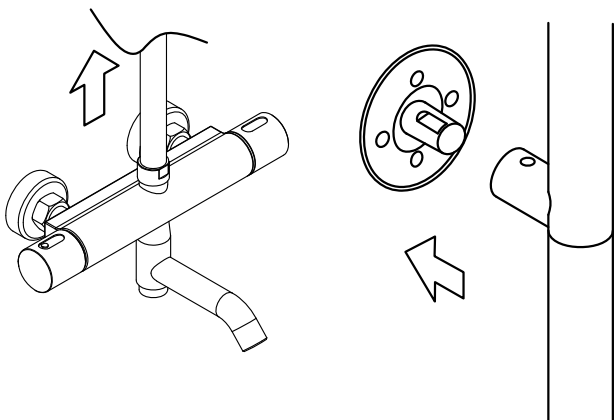
Step 3
Install the riser in the faucet.



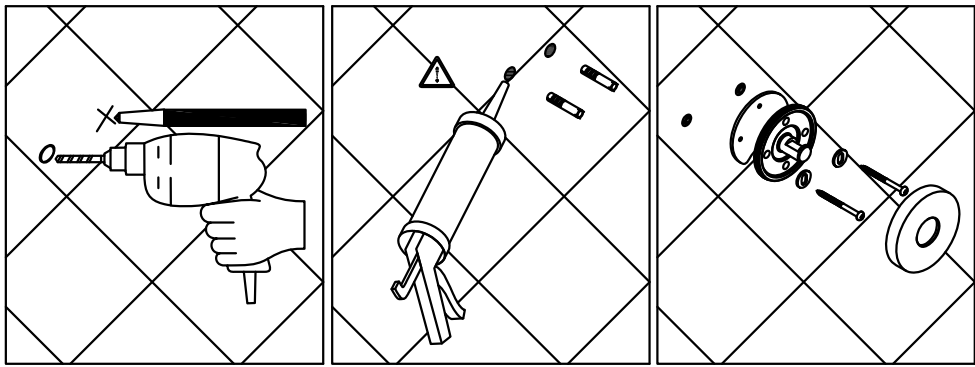
Step 4
Install the mounting piece on the shower arm, install the shower arm on the riser.



Step 5
Makesure the riser is level, mark the position of the screw holes.

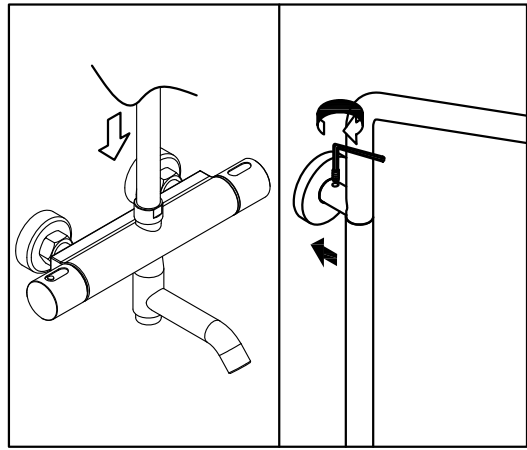


Step 6
Remove the riser and the mounting piece.



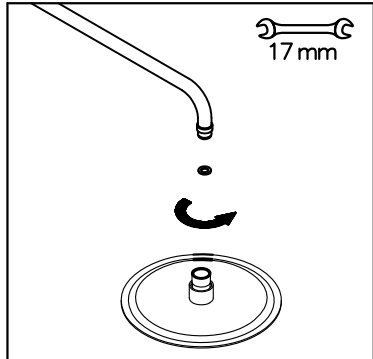
Step 7

Drill the screw holes and install the anchors. Install the mounting piece and mounting piece seal.



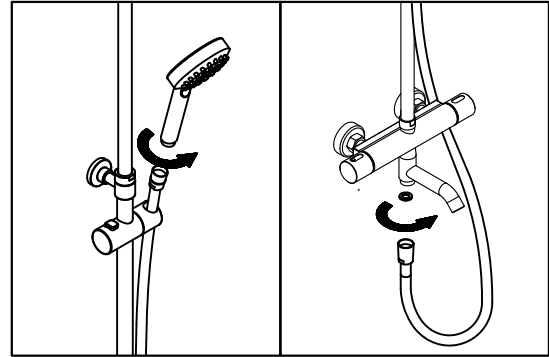
Step 8

Install the riser on the faucet, tighten the screw.



Step 9

Install the shower rain head.



Step 10

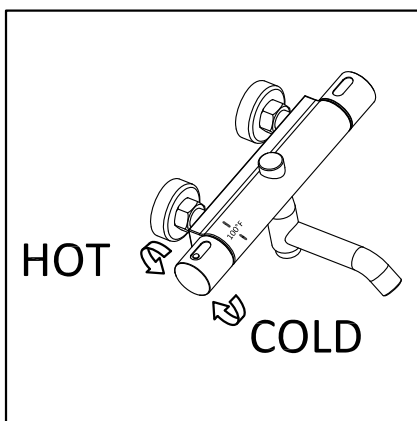
Place the hose washer in the short hose end connection. Connect this end of the hose to the faucet. Place the screen washer in the long hose end connection. Install the handshower on this end of the hose. Rest the handshower in the holder.

Usage

How to operate the temperature handle and shower handle

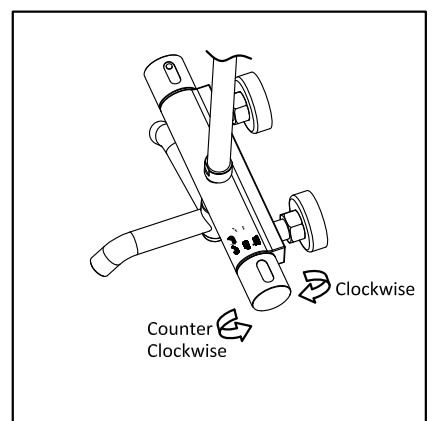
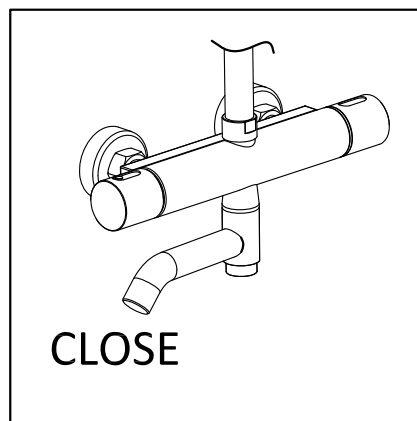
Temperature handle

- 1)The temperature preset at 100°F. Turn the left hand handle to adjust the temperature.
- 2)Hold the button and turn anti-clockwise to increase the temperature, turn clockwise to decrease the temperature.



Shower handle (Set the Tub Spout at CLOSE position)

- 1)Turn the right hand handle clockwise for rain shower
- 2)Turn the right hand handle counter clockwise for hand held shower



Tub spout diverter instruction

- 1)The tub spout swings to the center at OPEN position, and then turn the shower handle anti-clockwise, tub spout works.
- 2)The tub spout swings to the left at CLOSE position, Rain shower or hand shower works

