



**PIONEER INDUSTRIES, INC.**  
3325 S. Garfield Ave.  
Commerce, CA 90040  
(800) 338-9468  
www.pioneerind.com

# INSTALLATION

## Tools:



Adjustable Wrench



Plumbers Putty



Teflon Tape



Rags

## Model Number: 4MTXXXT

### Warnings and Notes:

Check with local plumbing code requirements before installation.

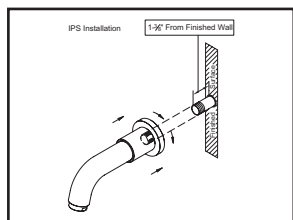
This product should be installed by a local listed plumber.

**Do not use plumbers putty on threads.**

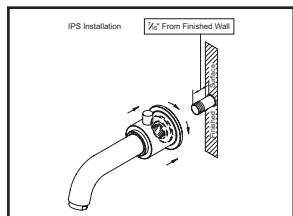


## Installation Steps:

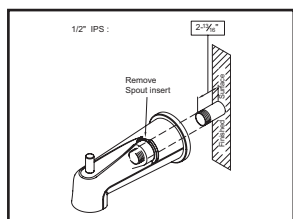
### Single Handle Tub / Shower Trim Set



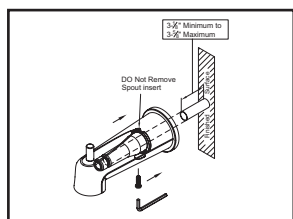
(1) For 4MT200T IPS tub spout installation: The 1/2" pipe thread nipple must be kept with a length of 1-3/8" from finished wall. Apply Teflon tape at the thread end of pipe nipple. Screw tub spout onto the pipe nipple and tighten with help of strap wrench.



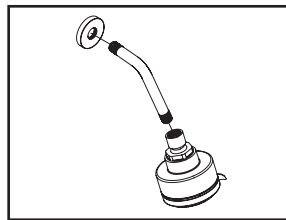
(2) For 4MT110T, 4MT120T, 4MT130T, 4MT113T IPS diverter tub spout installation: The 1/2" pipe thread nipple must be kept with a length of 7/16" from finished wall. Apply Teflon tape at the thread end of pipe nipple. Screw tub spout onto the pipe nipple and tighten with help of strap wrench.



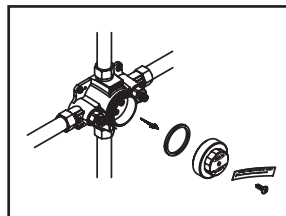
(3) For 4MT201T, 4MT1X1T IPS tub spout installation: The 1/2" pipe thread nipple must be kept at a minimum length of 2-13/16" from finished surface of tub or wall. Remove Allen screw, twist and remove spout insert by using 1-1/32" size socket. Also remove black washer. Apply Teflon tape at threaded end of nipple. Screw tub spout onto the nipple and tighten by strap wrench.



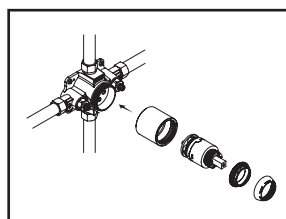
(4) For 4MT201T, 4MT1X1T slip-fit tub spout installation: The 1/2" nominal copper tube must be cut with a minimum length of 3-1/8" to a maximum length of 3-5/8" from finished surface of tub or wall. The end of copper tube should be chamfered free of any burrs to prevent cutting or nicking O-ring inside the spout. The outside surface should be sanded free from nicks and scratches. Press and twist the spout over copper tube flush with the finished tub or wall surface. Tighten the set screw, but do not overtighten.



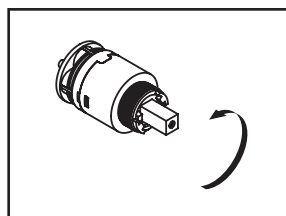
(5) Caution: Only use Teflon tape on the thread ends of shower arm to avoid plugging showerhead spray outlet. Use silicon to caulk the back of shower arm flange. Slide shower arm flange over shower arm. Apply Teflon tape on both thread ends of shower arm and install shower arm, carefully tighten shower arm with help of strap wrench. Press shower arm flange against finished wall. Turn on water to flush system. Turn off water and attach showerhead to shower arm.



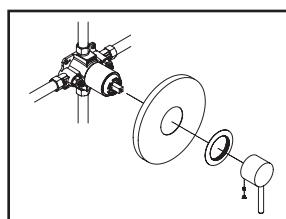
(6) Remove test cap with the help of 1-11/32" socket, relieve the water pressure to ensure all the debris are flushed out of the system.



(7) Thread sleeve to the valve body. Ensure to install cartridge in position that cold water flows first and two notches underneath of the cartridge seat properly in the valve body. Hold the cartridge, thread and tighten retainer nut to sleeve. Thread retainer cap to retainer nut.



(8) For back to back installation:- Rotate the cartridge 180 Degree. Ensure 'B-B UP' symbol on the cartridge is on the top.



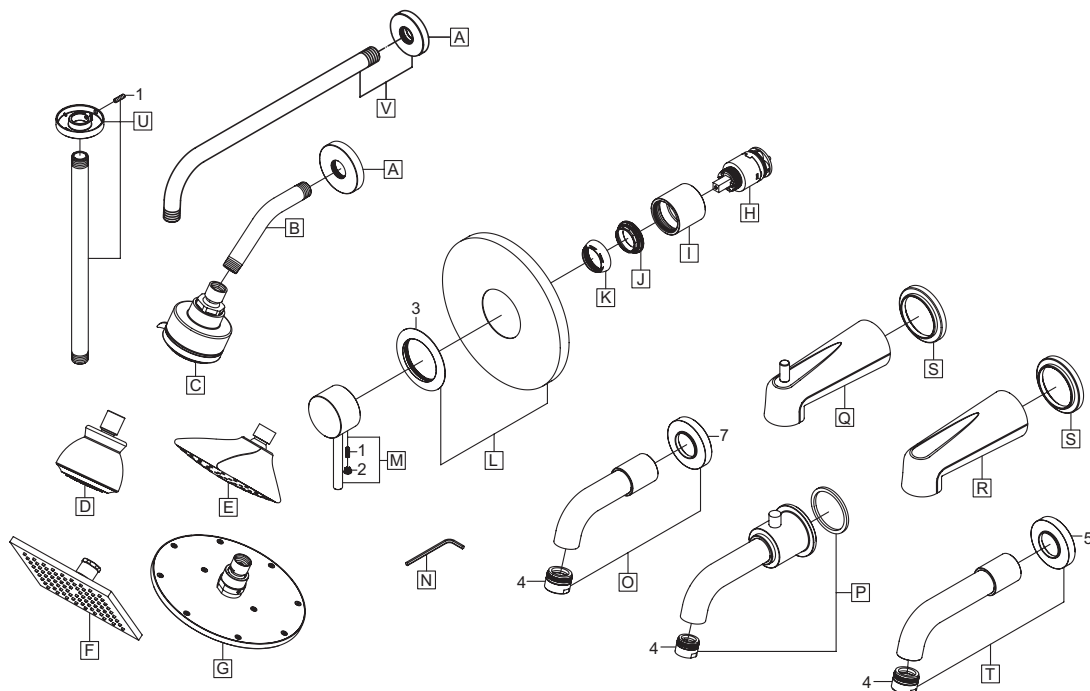
(9) Install face plate and attach handle with Allen wrench. Turn on the main water supply. Check for any leak. Check the temperature with thermometer for the hot water. If needed to reduce the hot water temperature then, turn off main water supply. Remove the cartridge by removing retainer cap and retainer nut. Turn red temperature adjusting ring clockwise to decrease the temperature. Ensure the hot water temperature is set below 120 ° F.

## Exploded Drawing :

\* Note: Please specify finish/color when ordering.

	ITEM #	DESCRIPTION
Q	X-6400102*	7" Extended Diverter Tub Spout (For 4MT111T, 4MT121T, 4MT131T)
R	X-6400028*	7" Extended Tub Spout (For 4MT201T)
S	X-4400105*	Escutcheon (For 4MT111T, 4MT121T, 4MT131T, 4MT201T)
T	X-6400105*	7-1/2" Tub Spout (For 4MT210T)
U	X-6400085*	Shower Arm and Shower Arm Flange (For 4MT308T, 4MT114T)
V	X-6400013	15" L Shower Arm and Shower Arm Flange (For 4MT115T, 4MT315T)
1	X-4900080	3/32" Allen Screw
2	X-4900044*	Hole Cover
3	X-4400045*	Face Plate Flange
4	X-4400042*	Flow Streamer (For "O", "P" and "T")
5	X-4200071*	Escutcheon (For 4MT200T)

	ITEM #	DESCRIPTION
A	X-6400011*	Shower Arm Flange
B	X-6400002*	Shower Arm
C	X-6400095*	1.75 GPM Shower Head (For 4MT110T, 4MT111T, 4MT300T)
D	X-6400081*	1.75 GPM Shower Head (For 4MT120T, 4MT121T, 4MT320T)
E	X-6400083*	1.75 GPM Shower Head (For 4MT130T, 4MT131T, 4MT330T)
F	X-6400077*	2.5 GPM Shower Head (For 4MT114T, 4MT307T)
G	X-6400012*	2.5 GPM Shower Head (For 4MT308T, 4MT113T, 4MT115T, 4MT313T, 4MT315T)
H	X-3400007	Ceramic Disc Cartridge
I	X-4400030*	Sleeve
J	X-4400080	Retainer Nut
K	X-4200001*	Cap
L	X-4400043*	Face Plate
M	X-1400028*	Motegi Handle
N	X-4900024	3/32" Allen Wrench
O	X-6400024*	Tub Spout (For 4MT200T)
P	X-6400051*	Diverter Tub Spout (For 4MT110T, 4MT113T, 4MT114T, 4MT115T, 4MT120T, 4MT130T)



For more care information or trouble shooting inquiries  
about your Pioneer product, please call:  
**Pioneer Industries, Inc.** (800) 338-9468  
Monday-Friday 8AM to 8PM EST (5AM to 5PM PST)  
[www.pioneerind.com](http://www.pioneerind.com)