

Product Description & Information

The freestanding tub filler faucet upholds the timeless essence of antique faucet design while incorporating the benefits of modern day technology and convenience. Introduce a nostalgic look to your bathroom with our tub filler faucet that has two ergonomic lever handles, a corrosion and tarnish resistant finish, and an elegant brass hand-shower that produces a truly enjoyable bathing experience.

CAREFULLY READ THIS INSTRUCTION MANUAL BEFORE INSTALLING AND USING THIS PRODUCT.

PLEASE KEEP THIS INSTRUCTION MANUAL FOR FUTURE REFERENCE FOR PRODUCT OPERATION AND MAINTENANCE.

Features:

- Elegant Brass Hand Shower
- Solid Brass Construction
- Ceramic Disc Cartridge
- Swivel Spout

Package Contents :

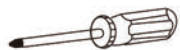
- 1- Freestanding Tub Filler Faucet
- 1- Installation Accessories
- 1- Hand Shower And Hose
- 2- Cover Plate

TOOLS YOU WILL NEED:

Plumber's putty



Pipe tape



Philips screwdriver



Pliers



Adjustable wrench

Cleaning and Care

Care should be exercised when cleaning this product. Although its finish is extremely durable, it can be damaged by harsh abrasives and cleaning pads. To clean, use a light, non-abrasive cleaning solution or cleaning polish.

Installation Instruction

Product Features:

Elegant Brass Hand Shower
Solid Brass Construction
Ceramic Disc Cartridge
Swivel Spout

Freestanding Tub Filler Faucet Manual

Caution: This instructions book is written for universal use and subject to specification variance of actual parts.

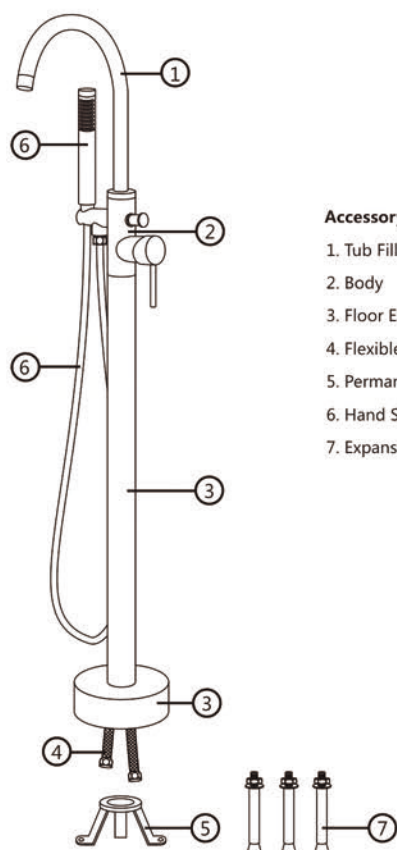
The product is cUPC certified.

Original certification model code:DF-02018

**For easy installation of your faucet please do the following:**

- Thoroughly read all instruction before installing the enclosed faucet.
- Read and understand all warnings, care and maintenance information.

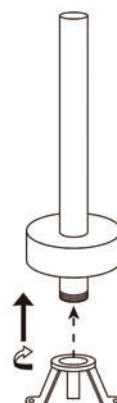
Product Diagram and Parts



Faucet Installation Steps



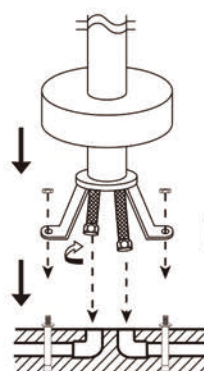
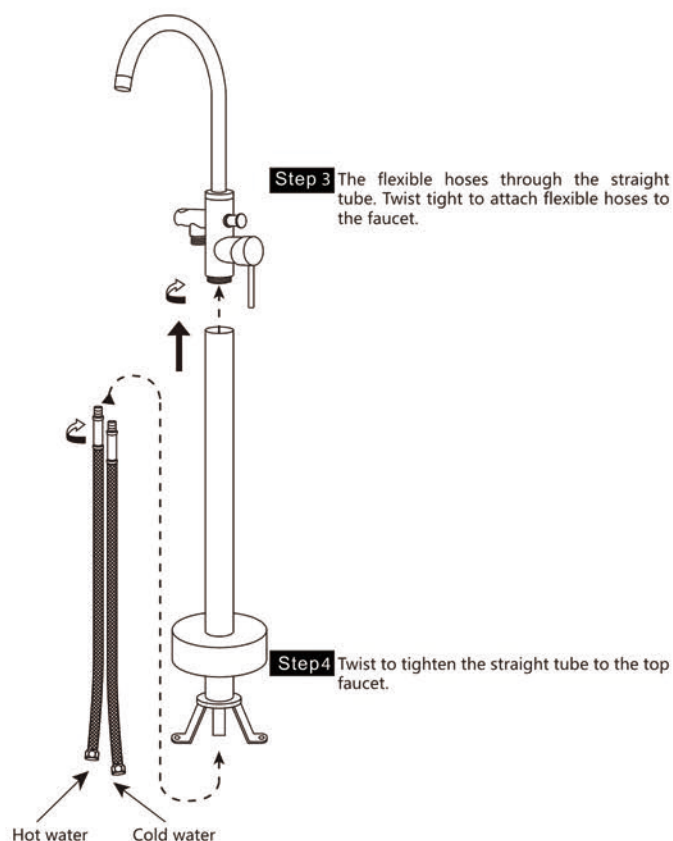
Step 1 The floor escutcheon through the straight tube from top to bottom.



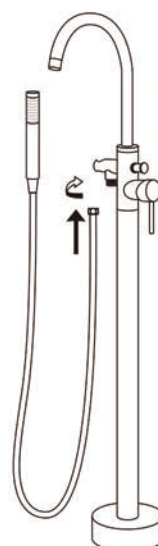
Step 2 Installed the permanent seat.

Faucet Installation Steps

Faucet Installation Steps



Step 5 Tighten the screws to the permanent seat on the ground. Insert the flexible hoses to the hot and cold outlet tube.



Step 6 Install the hose to the hand shower and the tub filler. Please check the tub filler spout and hand shower water flow and its function.