



# Chesapeake™

## Wall-Mount Bathroom Sink

### K-1728

#### Features

- Made from premium materials that withstand high-volume usage.
- 19-1/4" L x 17-1/4" W.
- Faucet not included.
- Ledge-back.
- Includes wall hanger.
- Drilled for concealed arm carrier.

#### Material

- Vitreous china.

#### Installation

- Wall-mount.

#### Recommended Products/Accessories

K-8998 P-Trap  
K-23726 Drain treatment  
K-23725 Cast iron cleaner

#### Included Components

Additional Components:  
Hanger(s)



ADA

#### Codes/Standards

ASME A112.19.2/CSA B45.1  
ADA  
ICC/ANSI A117.1




#### KOHLER® One-Year Limited Warranty

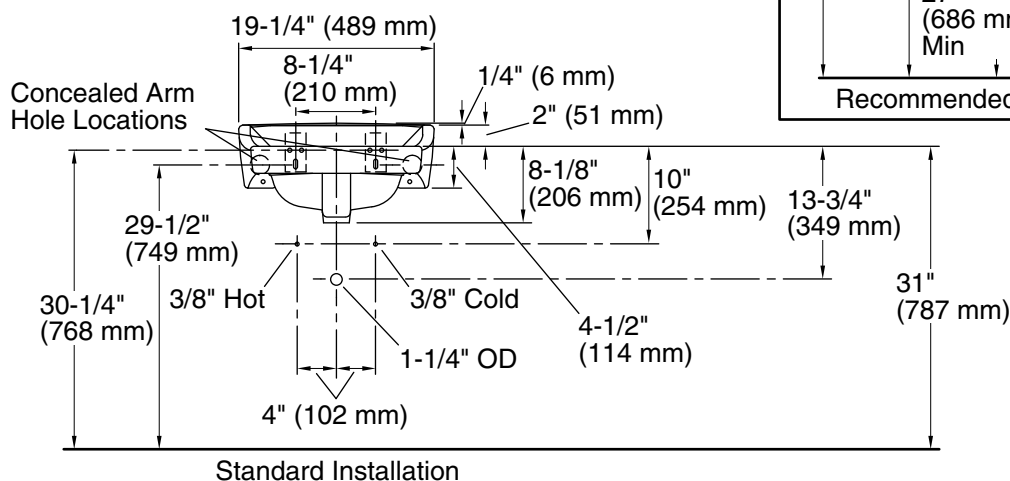
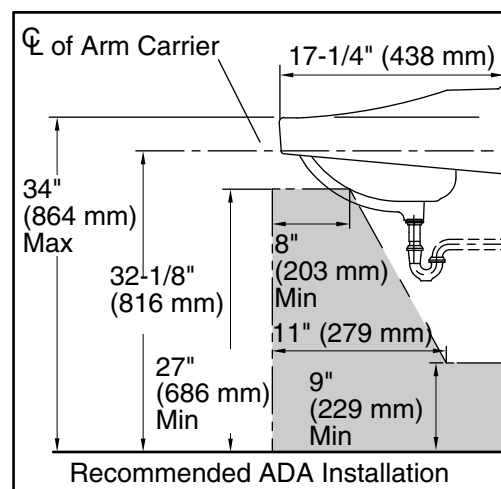
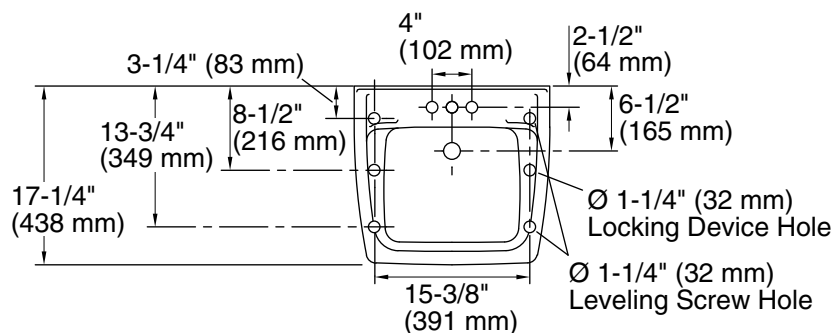
See website for detailed warranty information.

#### Available Colors/Finishes

*Color tiles intended for reference only.*

Color	Code	Description
-------	------	-------------

	0	White
	96	Biscuit
	47	Almond



### Technical Information

All product dimensions are nominal.

Bowl configuration: Single

Installation: Wall-mount

Bowl area (Only): Length: 14" (356 mm)

Width: 11" (279 mm)

With overflow: Yes

Water depth: 4-7/16" (113 mm)

Number of deck holes: 3

Faucet hole spacing: 4" (102 mm)

Faucet hole(s): 1-1/4" (32 mm)

Drain hole: 1-3/4" (44 mm)

### Notes

Install this product according to the installation instructions.

ADA compliant when installed to the specific requirements of these regulations.