

**Reminder :** the company reserves the right to make change on the product appearance and accessories and no further notice is given. The dimension and color of any product are subject to those of the material object.

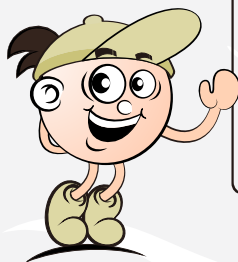
# **USING INSTRUCTIONS OF MASSAGING TUBS**

**(ETL)**



## Directory

Preface .....	2
Important safety instructions .....	3
Installation tools .....	6
Single-handle pipe connection diagram .....	7
Installation Steps .....	9
Operation .....	12
Level detection .....	13
Maintenance .....	14
Special statements .....	14
Guide for Troubleshooting .....	15
Conversion table .....	16



### Reminder:

All appearance pictures for parts and components of this product in this Installation and Operation Manual are for reference only. The appearance of the actual product shall be taken as the standard, while the operation methods are the same.



---

**Thanks for choosing luxury hydro massage bathtubs, hydro massage bathtubs is dedicated to provide luxurious and comfortable bath.**

**Please read instructions through prior to installing product.**

**General information:**

**Failure to follow manufacturers instructions will result in your assumption of product liability and can result in product damage and / or personal injury.**

**This product meets nationally recognized standard including ETL, installer is responsible for complying with local codes that may apply.**

**Responsibility for the installer**

**The installer must inspect and water test the product priority to installation to insure the unit is free from the infect or damage. In the even of the problem, the unit must not be installed. If the create or the product has been damaged, please contact our authorize distributor or us immediately.**

**The products is designed to be installed by a licensed trade-person.**

**Licensed plumbers and electricians should be employed to insure proper installation, installers assume all liability for following the correct installation procedures.**

**Use only accessories authorized by the manufacturer with the products.**

**This product is designed for use by healthy individuals in residential settings.**

**Important safety instructions:**

**Warning! When using this product, basic precautions should be followed. Read and follow all instructions pertaining to risk of fire, electric shock, or injury.**

**Danger! To reduce the risk of injury, do not permit children to use this product unless they are closely supervised at all times.**

## **Important safety instructions**

The instructions pertaining to a risk of fire, electric shock, or injury to persons.

**Warning:** when using this unit, basic precautions should be followed, including the following:

- 1. Read and follow all instructions.**
- 2. Danger:** To reduce the risk of injury: Do not permit children to use this unit unless they are closely supervised all the times.
- 3. Use this only for its intended use as described use as in this manual:** Do not use attachments not recommended by the manufacturer.
- 4. Never drop or insert any object into any opening.**
- 5. Do not operate this unit without the guard over the suction fitting.**
- 6. The unit must be connected to supply circuit that is protected by a ground-fault circuit-interrupter (gfi). Such a gfi should be provided by the installer and should be tested on a routine basis. To test the gfi, push the test button, the gfi should interrupt power. push the reset button. Power should be restored. If the gfi fails to operate in this manner, the gfi is defective. If the gfi interrupter power to the bathtub without the test button is being pushed, ground current is flowing, indicating the possibility of an electric shock. Do not use this hydro massage bathtub and have the problem corrected by a qualified service representative before using.**
- 7. (For permanently connected units) a green-colored terminal (or a wire connector marked "G", "GR", or "Ground") is provided within the terminal compartment. To reduce the risk of electric shock, connect this terminal or connector to the grounding terminal of your electric service or supply panel with a connector equivalent in size to the circuit conductors supplying this equipment.**

**Save these instructions!**

---

## **Warning!**

- A. Risk of accidental injury or drowning: children should not use hydro massage bathtub without adult supervision;**
- B. Warning: risk of accidental injury or drowning. Do not use Hydro massage bathtub unless all suction guards are installed to prevent body and hair entrapment;**
- C. To avoid injury , exercise care when entering or exiting the hydro massage bathtub;**
- D.warning: risk of accidental injury or drowning. Do not use drugs or alcohol before or during the use of a hydro massage bathtub equipped with heater to avoid unconsciousness and possible drowning;**
- E. Risk of fetal injury ; pregnant or possibly pregnant woman should conduct a physician before using a hydro massage bathtub equipped with hearer;**
- F. Risk of hypothermia and possible drowning : do not use a hydro massage bathtub equipped with heater immediately following strenuous exercise;**
- G. Risk of electric shock; do not permit electric appliances (such as a hair dryer, lamp, telephone, radio , or television) within 1.5m of this hydro massage bathtub;**
- H. Caution: test the ground fault circuit, interrupter protecting this appliance periodically in accordance with the manufacturers instruction ;**
- I. Warning: risk of hyperthermia and possible drowning. Water temperature in excess of 38°C can be injurious to your health. Check and adjust water temperature before use ;**
- J. Risk of hypothermia ; people using medications and/or having an adverse medical history should conduct a physician before using a hydro massage bathtub equipped with heater.**

---

**Hyperthermia occurs when the internal temperature of the body reaches a level several degrees above the normal body temperature of 98.6 F. The symptoms of hyperthermia include an increase in the internal temperature of the body, dizziness, lethargy, drowsiness, and fainting.**

**The effects of hyperthermia include:**

- A) failure to perceive heat,**
- B) failure to recognize the need to exit the hydro massage bathtub,**
- C) unawareness of impending hazard,**
- D) fetal damage in pregnant women,**
- E) physical inability to exit the hydro massage bathtub, and**
- F) unconsciousness resulting in the danger of drowning.**

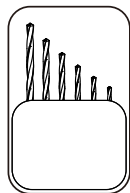
**Warning the use of alcohol, drugs, or medication can greatly increase the risk of fatal hyperthermia.**

## **Install instructions**

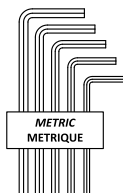
**Warning-when using electric products, basic precautions should be followed, including the following;**

- 1. Danger: risk of electric . Connect only to a circuit protected by a ground-fault circuit-interrupter.**
- 2. Grounding is required . The unit should be installed by a qualified service representative and ground.**
- 3. Install to permit access for serving.**
- 4. An equipment -grounding terminal is provided in the fled-wiring compartment . To reduce the risk of electric shock , this terminal must be connected to the grounding means provided in the electric supply panel with a conductor equivalent in size to the circuit conductors supplying this equipment.**
- 5. Install this unit in accordance with the Canadian electrical code part . If the unit is sold in Canada.**
- 6. Metallic piping (such as used for the connection of a drain) if used. If it is not practical within the tub, shall be connected to bonding network.**

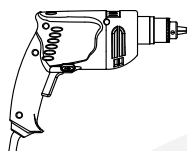
## Installation tools



drill bit



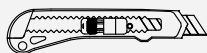
Hexagonal key



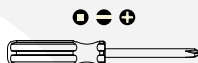
Electric drill



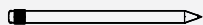
level bar



Art knife



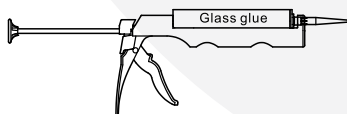
screwdriver



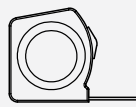
pencil



wrench



Glass glue



tape measure

## Single-handle pipe connection diagram

The following appearance pictures are for reference only. Please choose the pipe connection diagram that suits to the product.

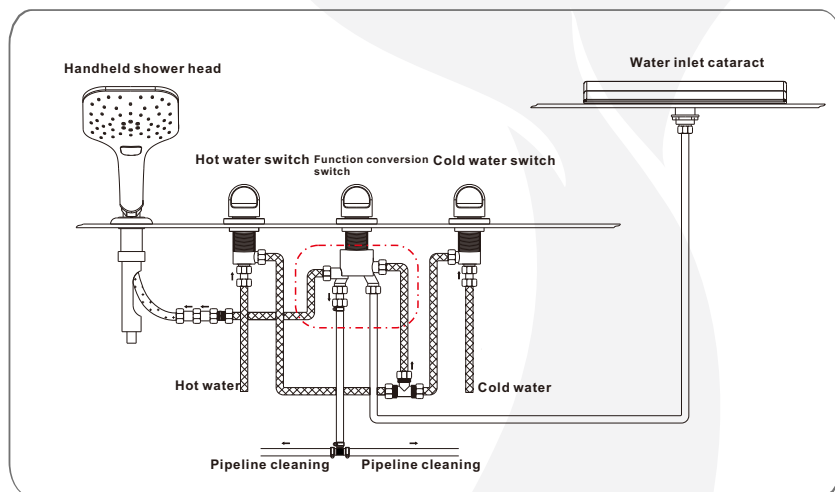


Figure 1 (E-BH608F/E-HP811T)

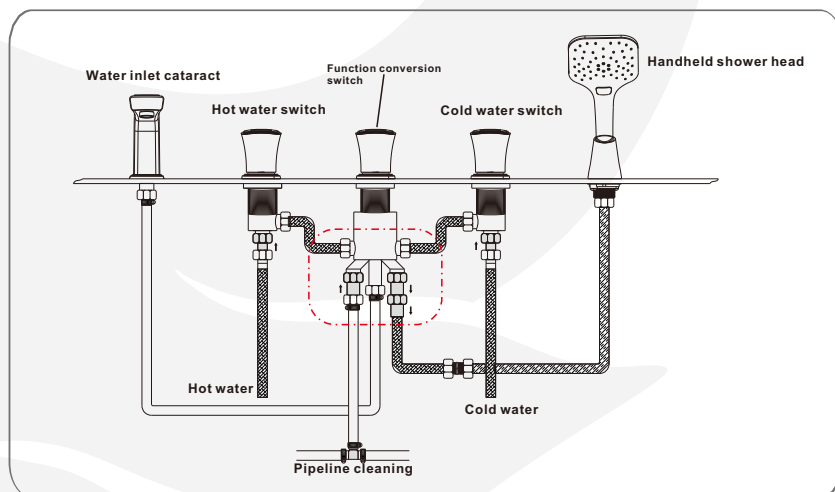


Figure 2 (E-BH608F/E-HP811T)

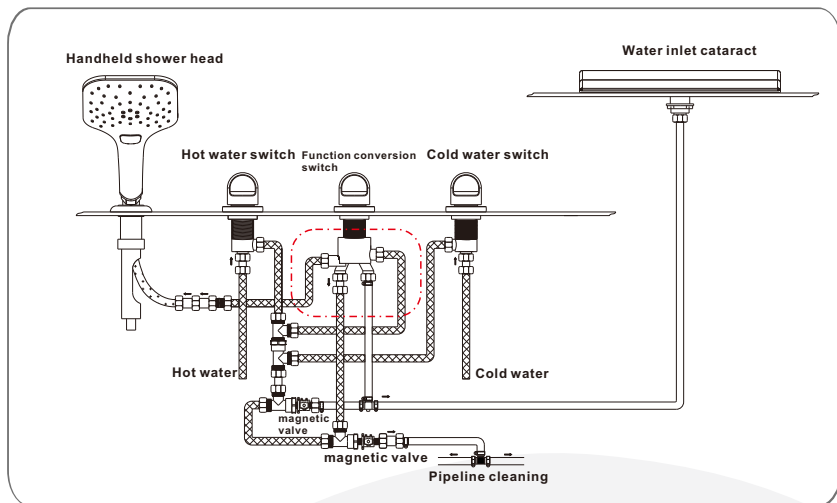


Figure 3 (E-PB3043)

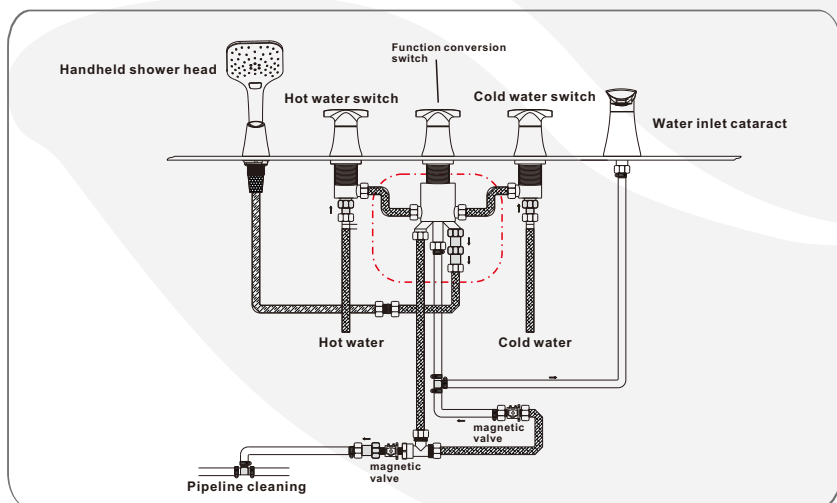


Figure 4 (E-PB3043)

## Installation Steps

As all parts of this product are standard universal pieces, please make the installation by reference to the specifications of the product. The recessed massage bathtub shall be installed in the following steps: determine the installation position, build up the bathtub masonry, install the surface accessories, connect to sewer pipe, connect the cold and hot water pipes, connect to power supply, check and clean, water-in test. For the massage bathtub with panel, follow the above installation steps except for “build up the bathtub masonry”.

### I. Determine the installation position

1. Arrange the sewer pipe, power socket and water inlet pipes as per the water and electricity installation diagram, and make sure that there is enough space for connection.

2. Adjust the balancing nut on the bottom to level the bathtub (as shown in Fig. 7). For better installation afterward, move out the bathtub a little first and move it back to the right position after the installation of accessories and the connection of water and electricity supplies.

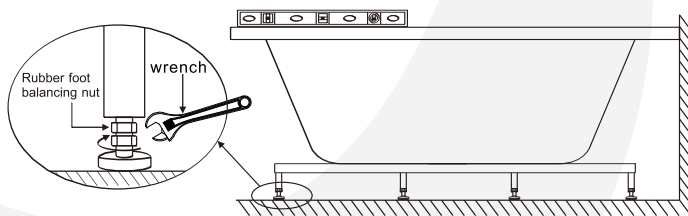


Figure 7

### II. Build up the bathtub masonry

Building up the bathtub masonry as per the water and electricity installation diagram, with a service access arranged on the masonry (this step is applicable for recessed massage bathtub only).

### III. Install the functional parts

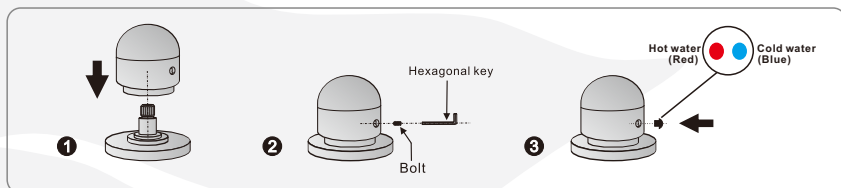


Figure 8



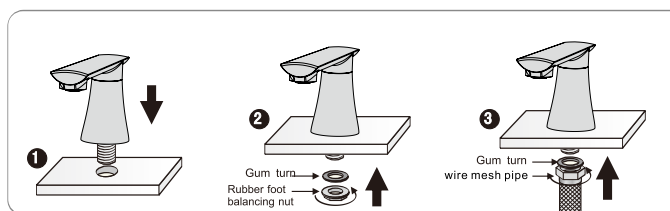


Figure 9 Install waterfall

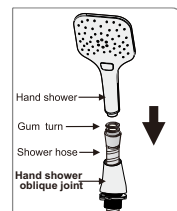


Figure 10 Installation of shower

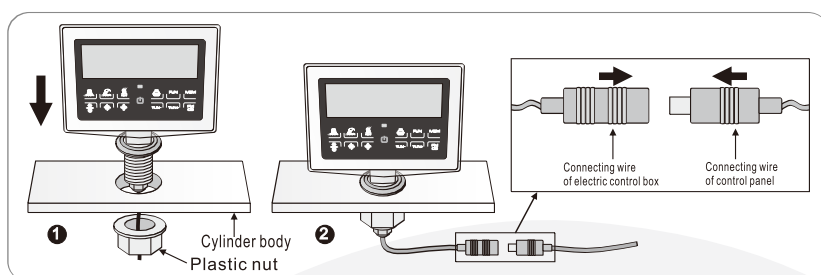


Figure 11 Install control pane (Use products with vertical computer board)

#### IV. Connect to sewer pipe

1. The 1" or 1.5" flexible corrugated drain pipe is arranged at the bottom of the bathtub. Fix the end of the pipe at the sewage, and seal it by the adhesive tape or silicone. Do not fold the pipe, otherwise it may adversely affect the draining effect (please note that the corrugated pipe shall be inserted into the sewer pipe for at least 50mm and completely connected and sealed to avoid any leakage) (as shown in Fig. 12).

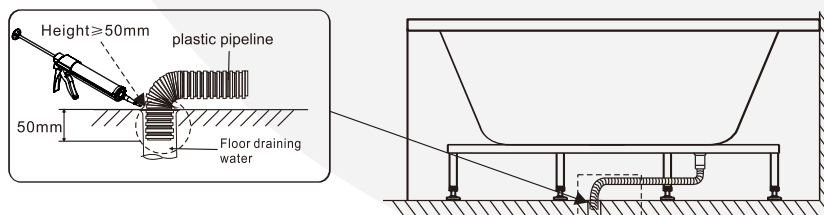


Figure 12

## V. Connect the cold and hot water pipes

Connect the pressure-resistant checkered water pipes to the cold and hot water connectors correctly as marked. For easy operation and maintenance afterward, please provide the cold and hot water pipes with one valve each (as shown in Fig. 13).

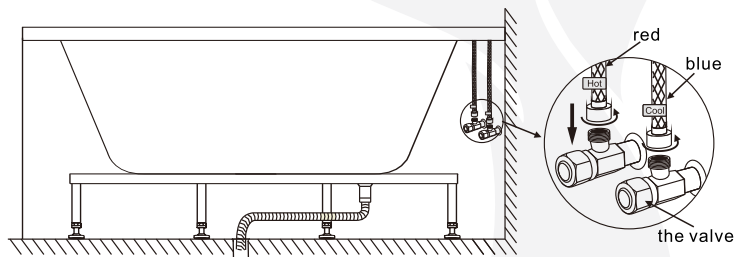


Figure 13

## VI. Connect to power supply

AC220V~240V/50Hz/60Hz exchange applicable to the product supply. Install the leakage protection switch as per the water and electricity installation diagram, and keep it waterproof.

1. Connect the power wires to the leakage protection switch properly and fix them (as shown in Fig. 14).

2. The green and yellow wires from the water pump are the earth wires with the short one connected to the stainless steel stand and the other end to the grounding conductor by the user (as shown in Fig. 15).

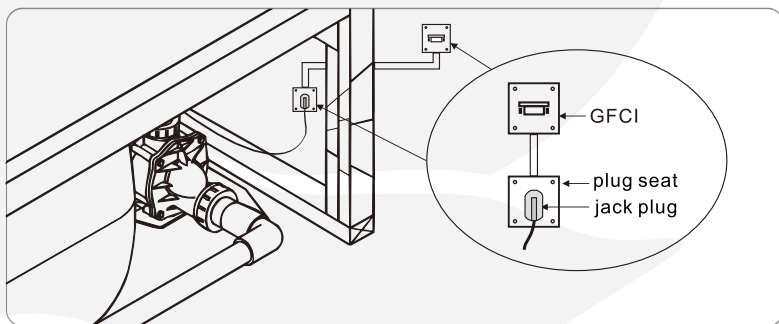


Figure 14

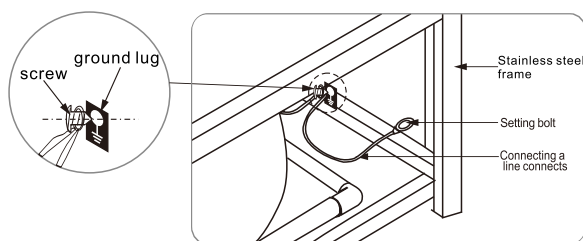


Figure 15

## VII. Check and clean

Following the above steps, check if all pipe connectors are sealed properly, clear the impurities in bathtub, and turn on the drainer and clean the bathtub with water. Please clean the bathtub thoroughly, or the impurities or float may be sucked into the water pump, or block the pipe or nozzle.

## VIII. Water-in test

Turn off the drainer and begin to hold water after making sure that there is no impurity inside the tub. Check the bathtub for leakage. When the water is higher the water level detector, switch on the power, and press water pump key slightly to start up the water pump.

## Operation

### I. Single-handle

- A. The hand wheel is the hot water inlet/off switch.
- B. The hand wheel is the changeover switch for functions of shower, intake waterfall or pipe cleaning. Turn the hand wheel to move the arrowhead to any symbol to start this function.
- C. The hand wheel is the cold water inlet/off switch. (As show in Fig.16)

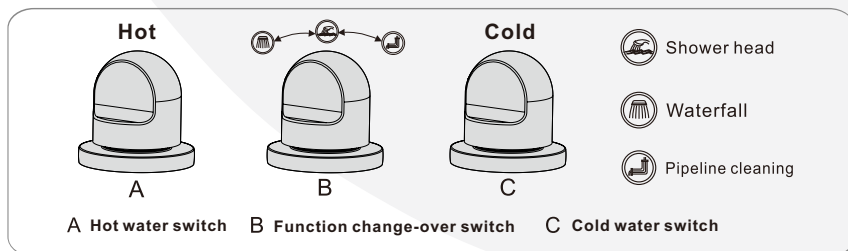


Figure 16

## II. Water regulation

(1) Turn the air regulator left and right to regulate the amount of water, or press the sewage nozzle ring by hand and turn it left and right to regulate the amount of water (as shown in Fig. 17).

(2) Turn the nozzle direction to change the water direction and achieve the best spraying effect (as shown in Fig. 18).

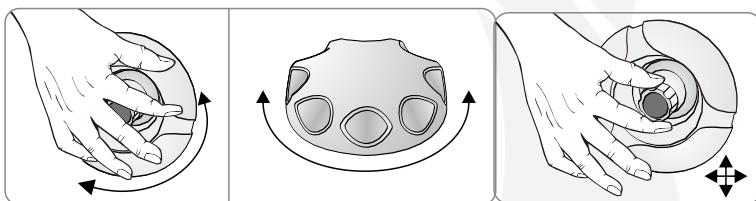


Figure 17

Figure 18

### Notes [⚠]

(1) To prolong the service life of the bathtub, please try to regulate the intake water temperature and keep it below 45°C. For intake water at higher temperature, fill in some cold water first.

(2) Shower is the tool for showering, not suitable for water intake at high temperature. Using it for water intake at high temperature for a long time may deform or damage the shower. Please use the waterfall faucet for water intake to the bathtub.

(3) If you choose the massage bathtub with bubble bath function, drain off the water in the bathtub first, then start the air pump to blow off the remaining water in the air pipe, and turn it off when the remaining water is drained off from the drainer.

## Level detection

The water level sensor is generally installed at the top of the highest nozzle position of the bathtub at 20-50mm, and lower than the overflow nozzle position; When the water level in the cylinder reaches the center of the water level sensor, the water pump can start.

Note: a conductor (such as human contact, metal object occlusion) blocks the water level sensor, the pump will start.

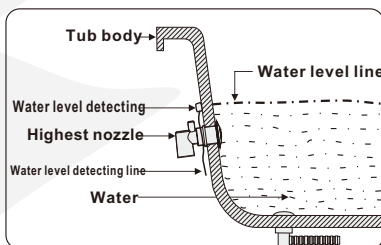


Figure 19

---

## Maintenance

1. Clean the bathtub with the liquid detergent and soft cloth. Do not use the acetone, ammonia water and any detergent containing the organic solvent. Formic acid or formaldehyde are prohibited to be used for sterilization, otherwise it may damage the surface of the bathtub.

2. Do not expose this product under the direct sunshine or bitter cold.

3. Bathtub: in case of any mild scratch on the bathtub, grind it with #2000 waterproof abrasive paper first, then polish it with the polishing agent or white toothpaste and flannelette to make it as new as before.

4. In case of any scratch or cigarette burns on the surface, grind it with #1200 waterproof abrasive paper first, and then with #2000 waterproof abrasive paper, and polish it with the polishing agent, white toothpaste and soft cloth after that.

5. Metal accessories: wipe the metal accessories gently by a piece of flannelette. Do not rub it by any rough cloth.

6. Keep any hard and sharp object away from the bath tub.

## Special statements

1. Our company reserves the right to modify the appearance and accessories of this product without further notice. The actual product shall be taken as the standard for the size and color of the product.

2. Any repair to this product must be done by the qualified service personnel designated by the manufacturer or the dealer, otherwise the free warranty will be null, and our company will not take any responsibility for any loss arising therefrom.

3. This Manual is for reference only. For any change and update to the design and instructions herein, no further notice will be given. Please forgive us for any mistake or omission in this manual due to publishing or translation.

## Guide for Troubleshooting

Common troubles	Causes	Remedies
Fail to start up	Leakage switch is power off, no power supply, Abnormal power supply to electric cabinet	Check and connect the power supply
	Poor connection between electric cabinet and control panel	Check and connect
	Fuse of electric cabinet is burnt	Replace the fuse and try again
	Control panel is damaged	Replace the control panel and try again
With function but without display	Poor connection between electric cabinet and control panel	Check and connect
	Poor function of control panel	Replace with new control panel and try again
No lights	Poor connection between electric cabinet and underwater lamp	Check and connect
	Underwater lamp load is faulty	Replace the underwater lamp
Out of control	Poor connection between control panel and electric cabinet when power is on	Check the connection between the control panel and electric cabinet
	Poor connection between control panel and electric cabinet	Make firm connection between the electric cabinet and control panel
Massage water pump fails to operate	No power supply to water pump	Check the power supply to the water pump motor
	Water pump fails to operate when lack of water	Fill in the water to level detector
	Impeller is blocked by the impurities	Clean or replace
	Malfunction of control panel keys	Replace the control panel
No sound from radio tuner (If radio tuner is provided)	Turned off or circuit trouble	Restart or check the connection to loudspeaker
	No channel or improper volume regulation	Search the channel, regulate the volume
	No signal or low signal	Adjust the angle of antenna to search the channel again

Common troubles	Causes	Remedies
No sound from CD player(If CD player is provided)	Not in CD mode	Switch to CD mode
	No power supply to CD player	Check the power supply to CD player
Telephone fails to function(If telephone is provided)	Poor connection or damage of telephone wire	Check the connection between the telephone line and electric cabinet. In case of damaged connection wire, replace it with similar shield wire.
	Sound transfer hole is blocked	Clean
Malfunction of remote control(If Remote controller is provided)	Remote control signal emission angle is somewhat large, or fails to aim at the receiver window	Aim the remote controller at the receiver window
	Strong electromagnetic interference nearby	Change to manual operation
	Low battery of remote controller	Replace the battery
Motor fails to start or No water spray after start	Power plug loose	Check the plug and insert it firmly
	Water pump impeller damaged or air in water pump	Replace the impeller or remove the air
No lights flashing and water pump fails to start when water pump key is pressed	Fuse in the control cabinet for no-water protection is burnt	Replace the fuse
With flashing lights but water pump fails to start when water pump key is pressed	Water level detection line is damaged due to environmental factors (such as bite by mouse or ant)	Check the water level control line and connect well
Water leakage	Connection becomes loose or with no gasket	Check and tighten the loose part Put on the gasket
		Replace the spool
Low water from shower or waterfall		Restart the changeover switch
	Water pipe is blocked	

Conversion Table

°C ↔ °F		°C ↔ °F		°C ↔ °F		°C ↔ °F		°C ↔ °F	
-19	-2.20	-5	23.00	9	48.20	23	73.40	37	98.60
-18	-0.40	-4	24.80	10	50.00	24	75.20	38	100.40
-17	1.40	-3	26.60	11	51.80	25	77.00	39	102.20
-16	3.20	-2	28.40	12	53.60	26	78.80	40	104.00
-15	5.00	-1	30.20	13	55.40	27	80.60	41	105.80
-14	6.80	0	32.00	14	57.20	28	82.40	42	107.60
-13	8.60	1	33.80	15	59.00	29	84.20	43	109.40
-12	10.40	2	35.60	16	60.80	30	86.00	44	111.20
-11	12.20	3	37.40	17	62.60	31	89.60	45	113.00
-10	14.00	4	39.20	18	64.40	32	87.80	46	114.80
-9	15.80	5	41.00	19	66.20	33	91.40	47	116.60
-8	17.60	6	42.80	20	68.00	34	93.20	48	118.40
-7	19.40	7	44.60	21	69.80	35	95.00	49	120.20
-6	21.20	8	46.40	22	71.60	36	96.80	50	122.00

$$^{\circ}\text{F} = 32 + ^{\circ}\text{C} \times 1.8$$

$$^{\circ}\text{C} = (^{\circ}\text{F} - 32) \times 5 \div 9$$