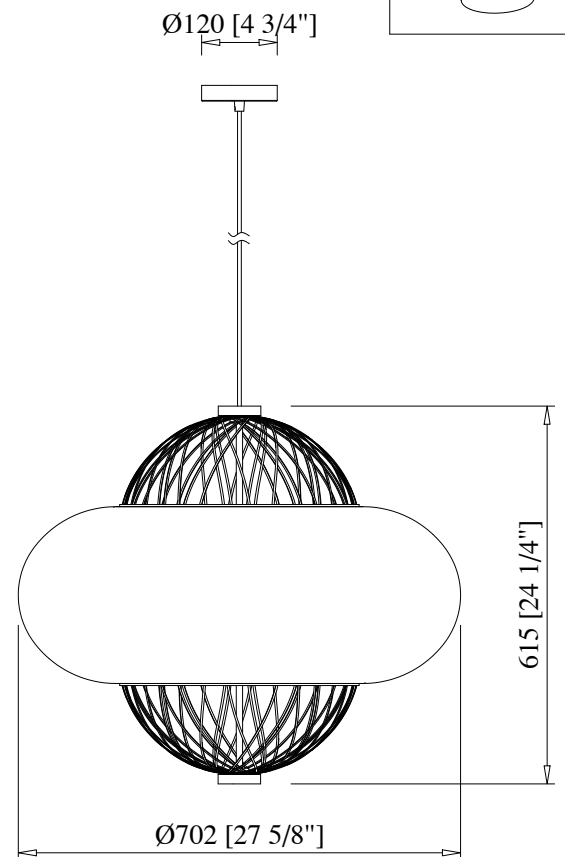
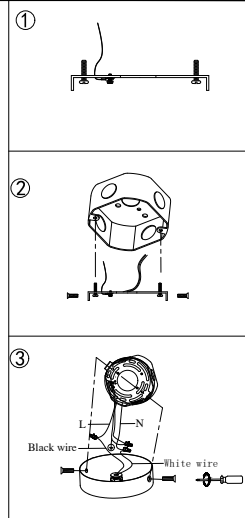
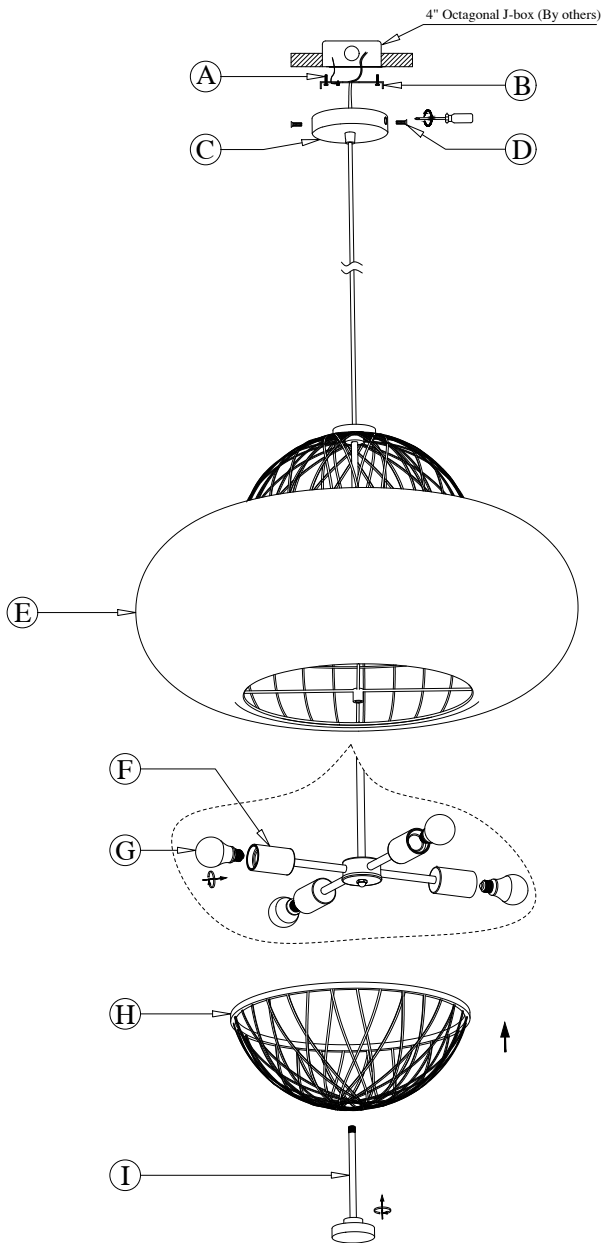


# DIAGRAM OF INSTALLATION STRUCTURE

SKU No. :CE1009196

Product Size: Ø27.6"\*H96" (Max)

Light Source: 4 × A19 E26 LED Bulb



- |                         |                    |                              |                      |
|-------------------------|--------------------|------------------------------|----------------------|
| (A) Mounting Screw (2×) | (B) Mounting Plate | (C) Canopy                   | (D) Flat screw (2×)  |
| (E) Lamp Fixture Body   | (F) Lamp-holder    | (G) E26 LED Bulb (By others) | (H) Bamboo Lampshade |
|                         |                    |                              | (I) Hand Stud        |

## Installation instruction

1. Turn off the power
2. Dismantle the mounting plate subassembly as picture (1) from the lamp fixture body(E), then install the mounting plate(B) to J-Box with the mounting screws(A).
3. Adjust the fixture's cable to the desired length.
4. Connect the fixture to a suitable ground in accordance with local electrical codes.
5. Connect the White wire to the neutral power line wire with a wire nut.
6. Connect the Black wire to the hot power line wire with a wire nut.
7. Neatly place all wires and wire nut connections inside the J-box.
8. Install the canopy(C) to ceiling with the flat screws(D).
9. Screw 4×E26 LED bulbs(G) into the the lamp-holder(F) of lamp fixture body(E).
10. Install the bamboo lampshade(H) onto the lamp fixture body(E), then tighten it with the hand stud(I).
11. After finish the installation, turn on the power.