



ASSEMBLY INSTRUCTIONS

Description: KENNA COFEE TABLE



Important safety instructions:

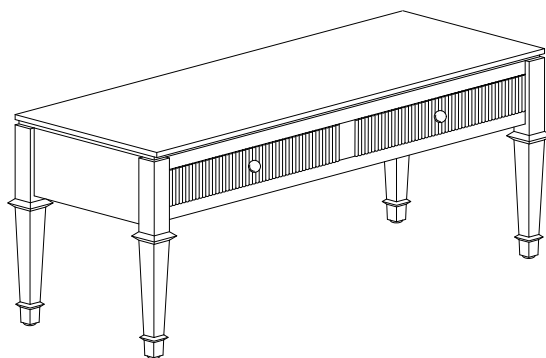
- Please read carefully all instructions before assembly.
- For your safety and ease, assembly by two or more adults is recommended.
- Keep instructions for future use.

Pre-assembly:

- Do not discard any content until assembly is complete to avoid accidentally discarding small parts or hardware.
- Take out all parts and hardware from box.

Parts List

Item	Description		QTY
P1	Leg		4
P2	Table Top		1



Hardware List

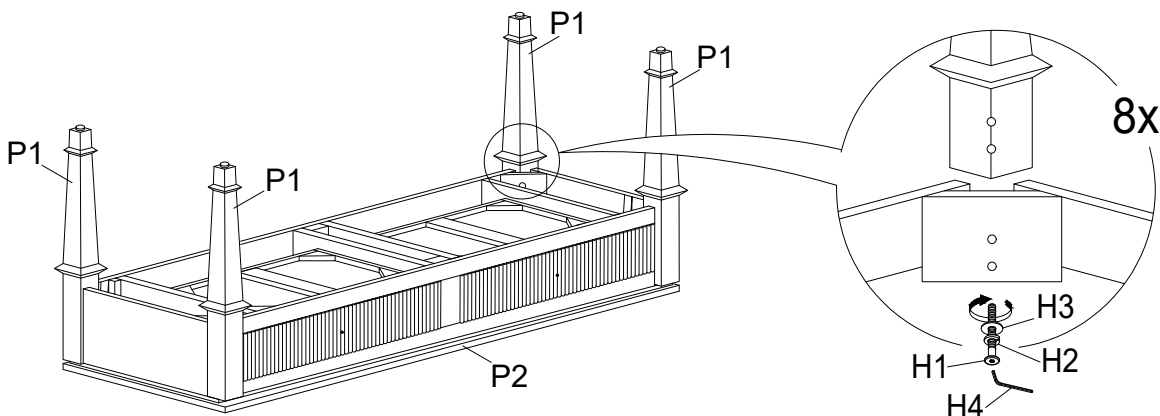
Item	Description		QTY
H1	Bolts M6 x 60mm		8
H2	Spring Washer		8
H3	Flat Washer		8
H4	M4 Allen Key		1

DISCLAIMER:

WHEN PROPERLY ASSEMBLED, THIS ITEM IS SAFE FOR INTENDED USE. SELLER IS NOT LIABLE FOR ANY DAMAGES RESULTING FROM ITEM BEING IMPROPERLY ASSEMBLED AFTER PURCHASE.

Assembly Procedures:

Step 1. Assemble the Table on a flat, soft surface such as a carpet or cloth to prevent scratching the finish. Attach Legs (P1) to the Table top (P2) using Bolt (H1), Spring Washer (H2), and Flat Washer (H3) using Allen key (H4) as shown below.

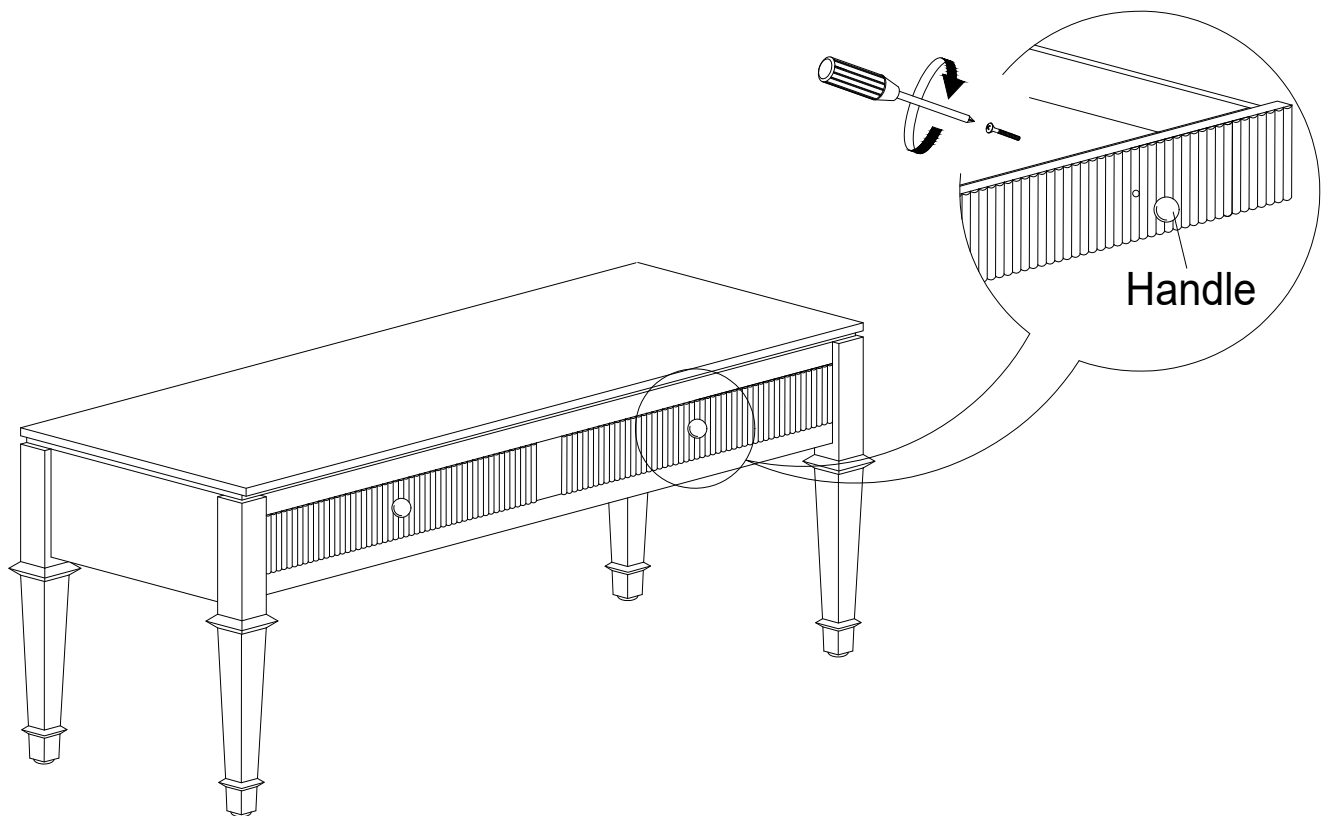




ASSEMBLY INSTRUCTIONS

Description: KENNA COFEE TABLE

Step 2: Turn the assembled table to an upright position, remove the handle from inner drawer, and attach it on outside of the drawer with screw driver. Assembly is complete.



ADDITIONAL NOTE ABOUT SAFETY:

BOLTS MAY LOOSEN DURING NORMAL EVERYDAY USE.

THEY SHOULD BE INSPECTED AT LEAST EVERY 3 MONTHS AND AND RE-TIGHTENED AS NEEDED TO PREVENT DAMAGE OR INJURY, AND ENSURE STABILITY.

Thank you for your purchase