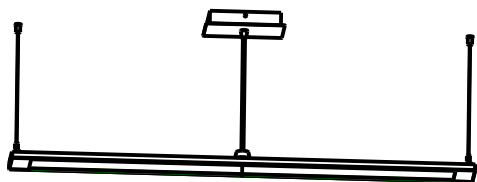


# Model 6648 - LED Flat Panel Light



## Notes:

1. The lamp should be installed in a minimum distance of 18 inches from any combustible material, to prevent the occurrence of fire hazard
2. Key parts of the heating will cause burns
3. Use a clean cloth or gloves when installing.

## Technical specification

---LED driver: 1 00-130 V ~ 60 Hz, 40W , 0.4-0.3 A

Light source: LED (0.156w\*256pcs leds)

Power: 40w

Maintenance:

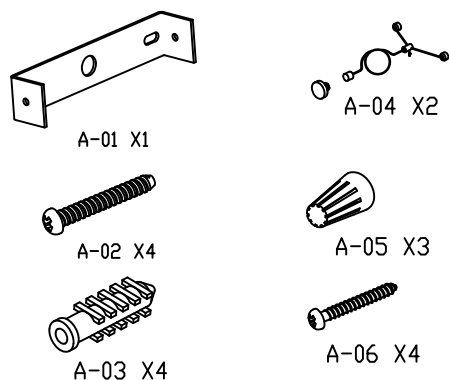
Disconnect the power supply, clean the fixture and accessories.

Inspect the drive inside and keep it dry

Regular connection

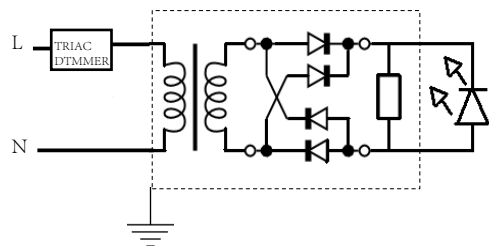
## Installation steps

## Accessories



## Circuit diagram

LED DE 40 W (0.156 W x 256)



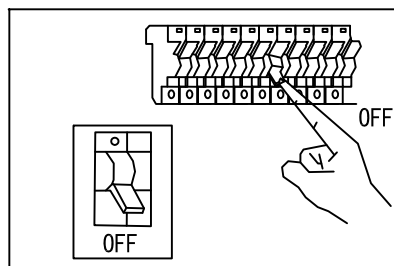
## CARE INSTRUCTIONS

Dusting — Use a clean, dry cloth.

Cleaning — To protect the finish, avoid any harsh abrasives or chemicals.

1

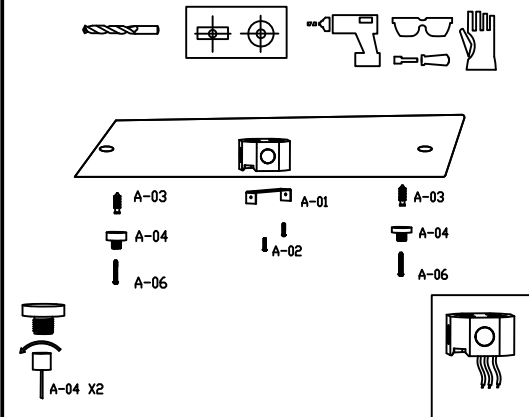
## Cable Mount Installation



Shut off power to the outlet box.

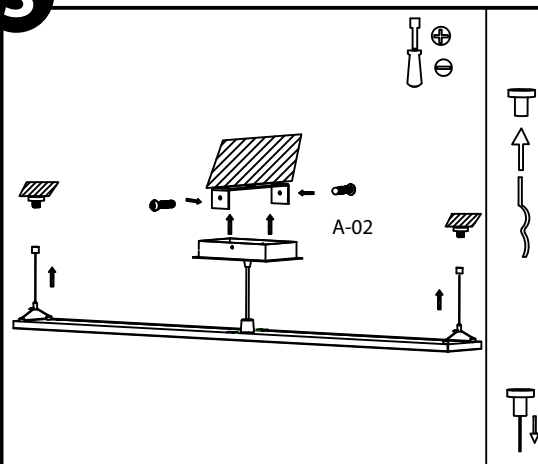
2

## Cable Mount Installation



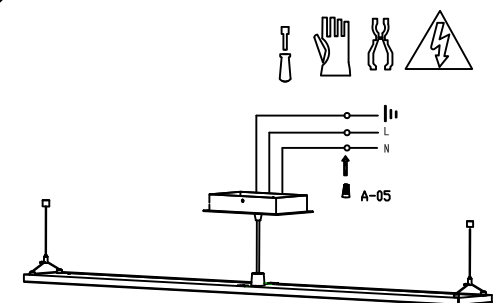
3

## Connecting the lights



A

## Connecting the lights



www.HomeSelects.com