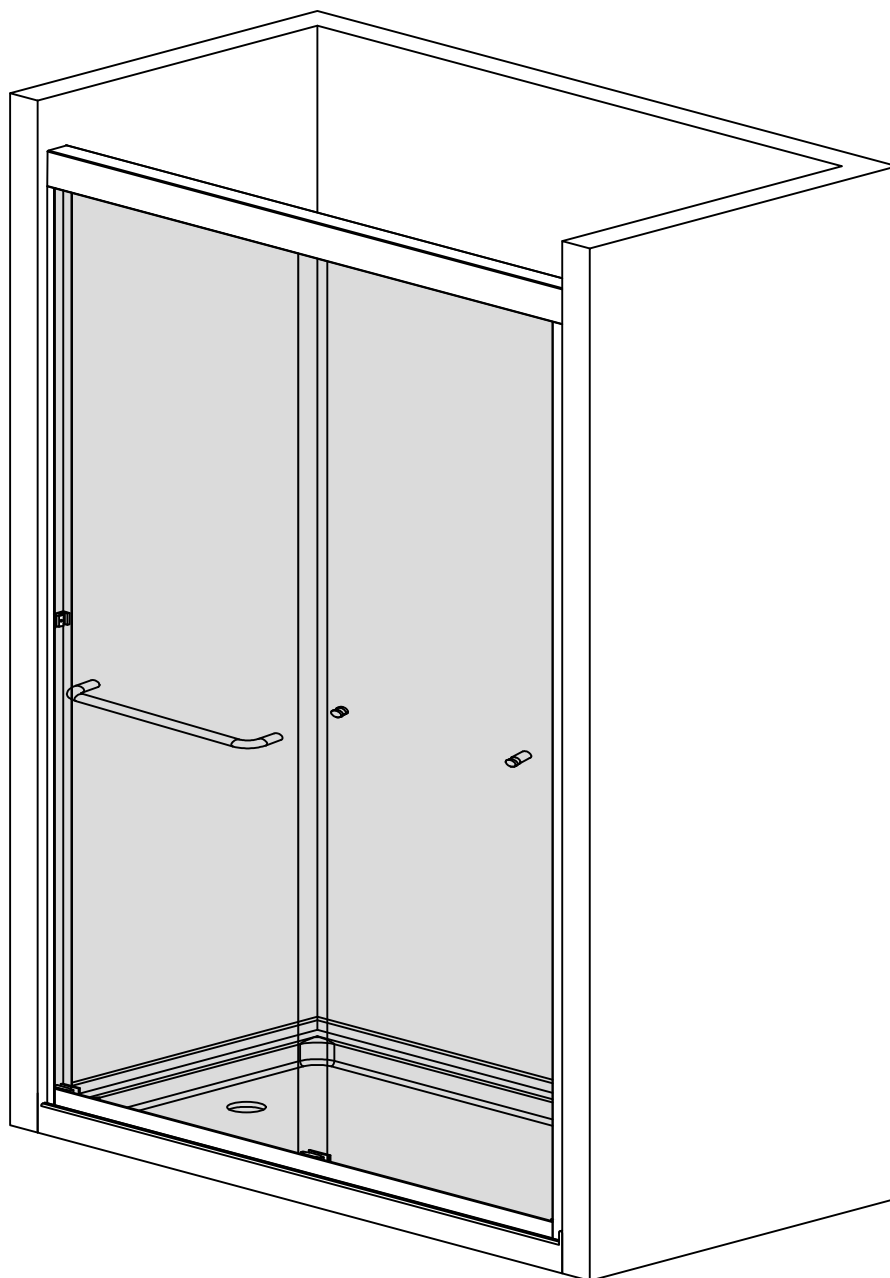


INSTRUCTION MANUAL

RCFLDS06



2 PEOPLE REQUIRED

Please keep this manual and product code number for future reference and for ordering replacement parts if necessary.

GENERAL INSTRUCTIONS

- Read this manual carefully and completely before proceeding.
- It is recommended that you wear safety glasses at all times during the installation.

INSTALLATION*OVER*CERAMIC*TILES

- If your shower door is to be installed over ceramic tiles, the tiles should lay completely under the wall jamb.
- Silicone should be used to seal the gap where the ceramic tiles meet the fixed panel.

NOTICE

- Caulking: no sealant is required inside the shower, unless otherwise stated.
- Some models are equipped with clear sealing gaskets.

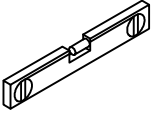
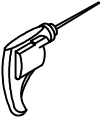


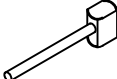

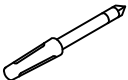

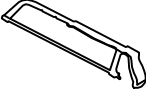

CARE FOR YOUR SHOWER DOOR

- Never use scouring powder pads or sharp instruments on metal pieces or glass panels.

An occasional wiping down with a mild soap diluted in water is all that is needed to keep the panels and metal parts looking new.

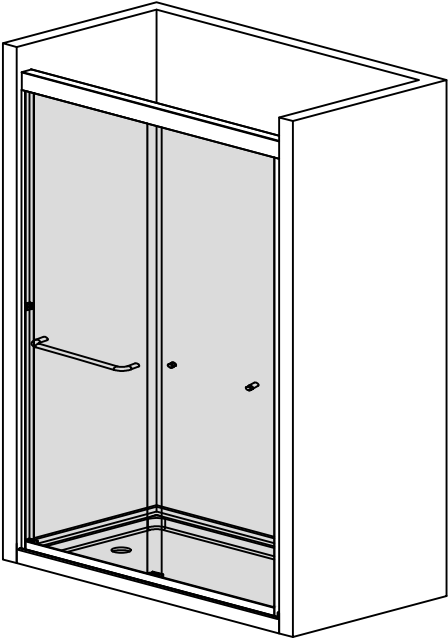
- We recommend wiping the glass panels with a squeegee after each use.

TOOLS REQUIRED

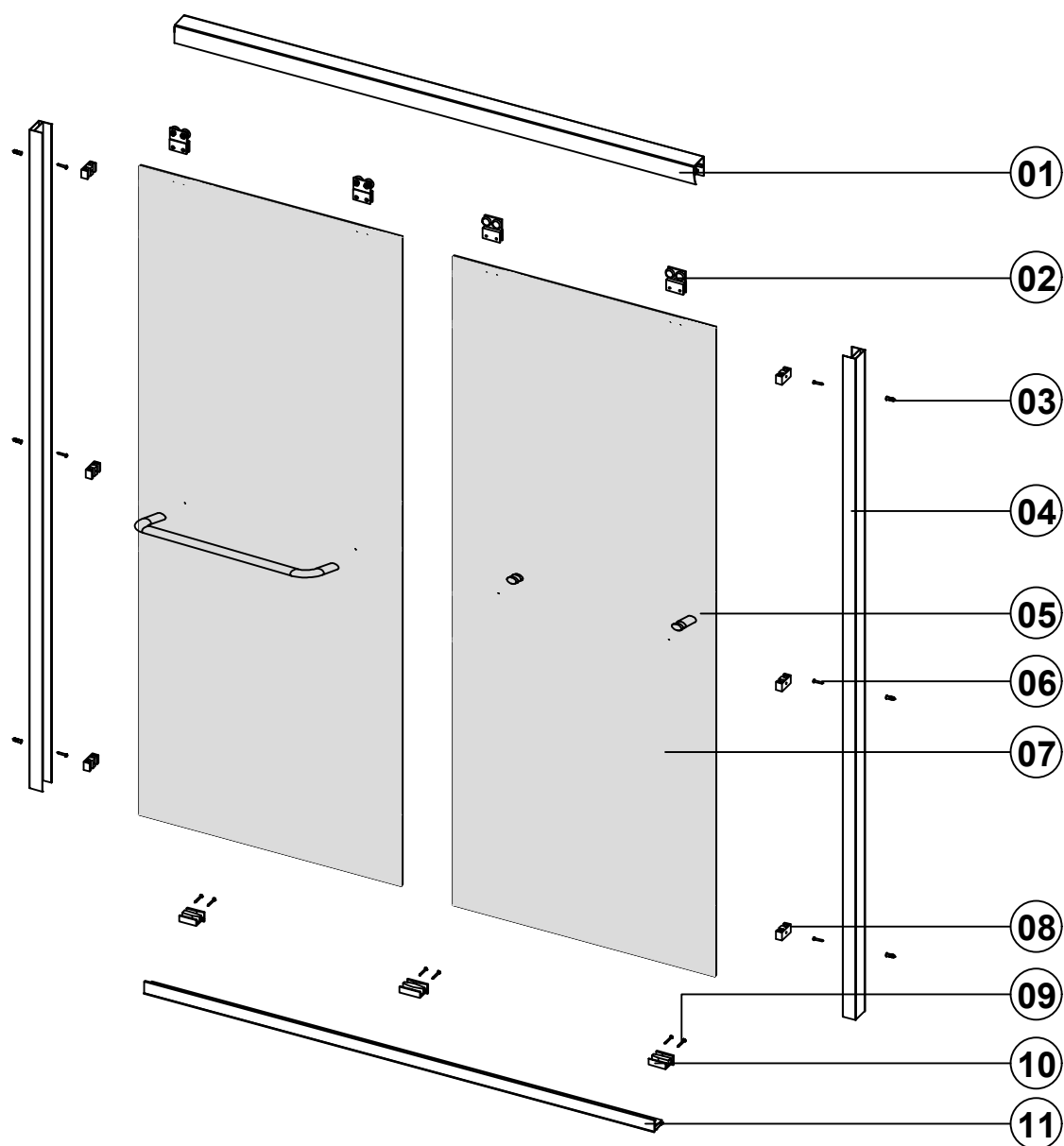
 SPIRIT LEVEL	 POWER DRILL	 PENCIL	 SILICONE	 MALLET
 TAPE MEASURE	 SCREW DRIVER	 6mm&3mm(1/4" &*1/8") DRILL*BITS	 HACKSAW	 SAFETY GLASSES

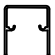
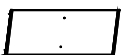









**Use*a*6mm(?)*drill*bit*for*ceramic*when*drilling*into*ceramic*tiles

CHOOSE A CONFIGURATION

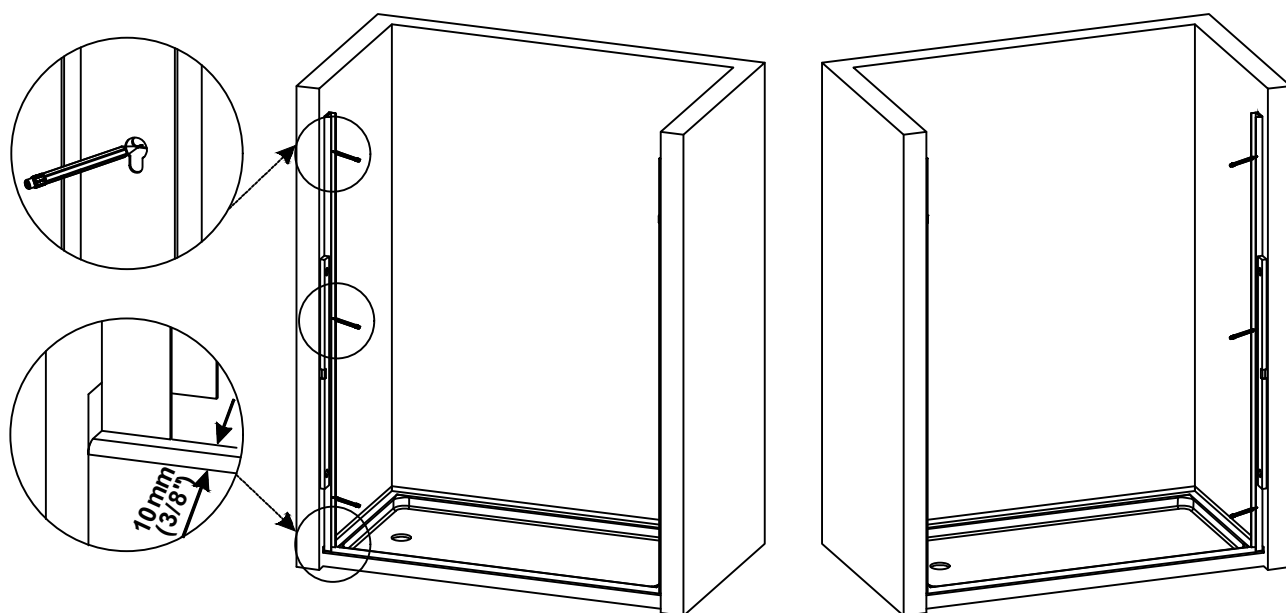


PARTS LISTING

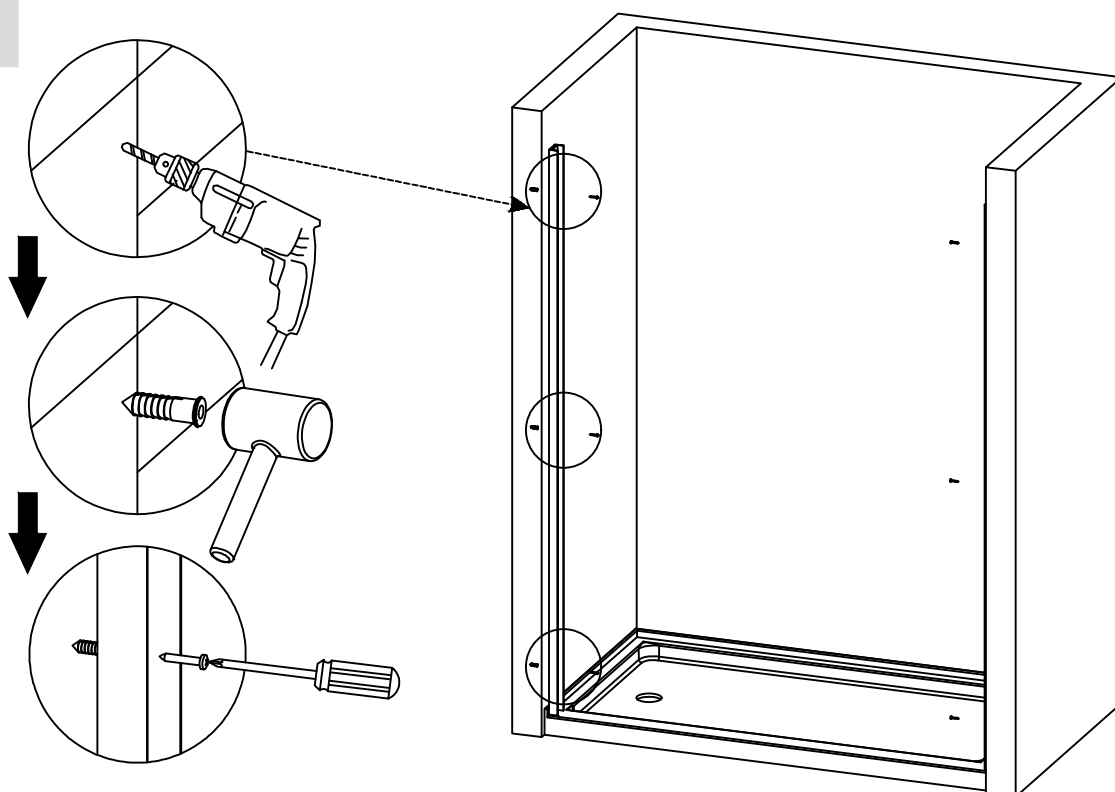


ITEM	PARTS	DIAGRAM	QTY	ITEM	PARTS	DIAGRAM	QTY
01	Header		1	07	Door panel		2
02	Top roller		4	08	Stopper		6
03	Wall plug Ø6		6	09	Screw ST4x10		3
04	Wall profile		2	10	Floor guide		3
05	Towel bar		1+1+1	11	Bottom profile		1
06	Screw ST4x30		6				

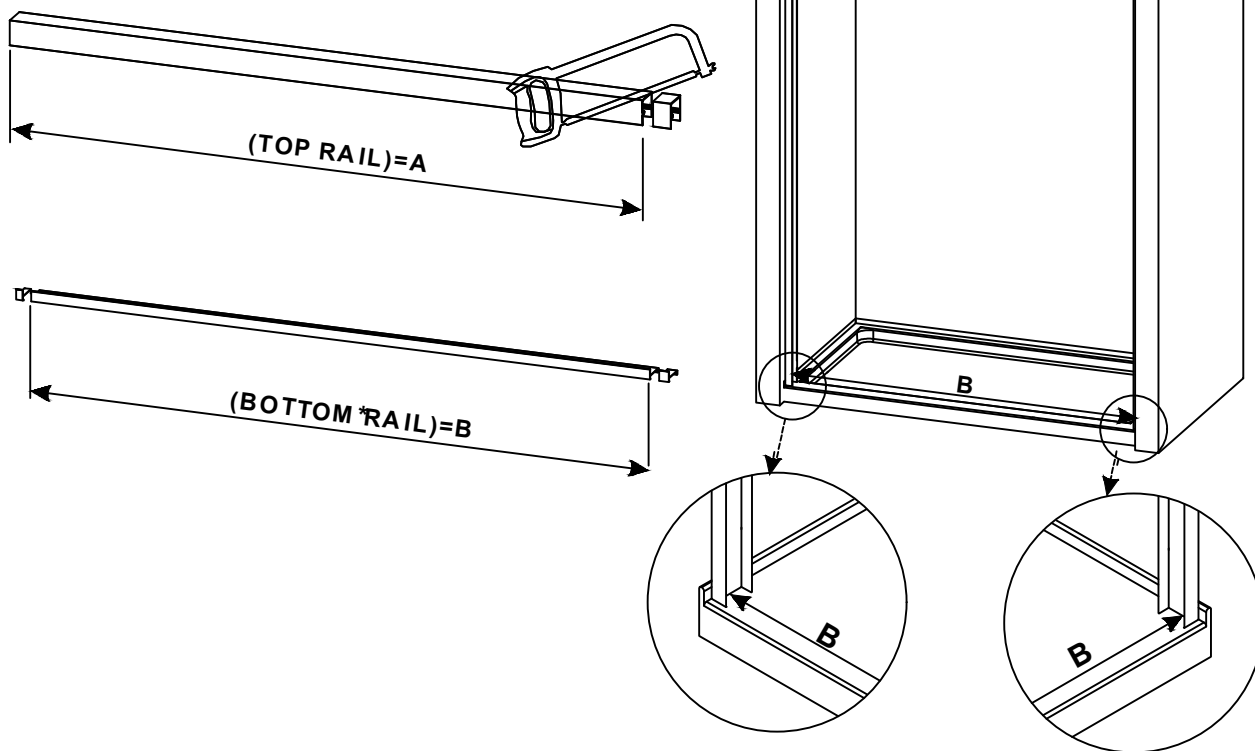
1



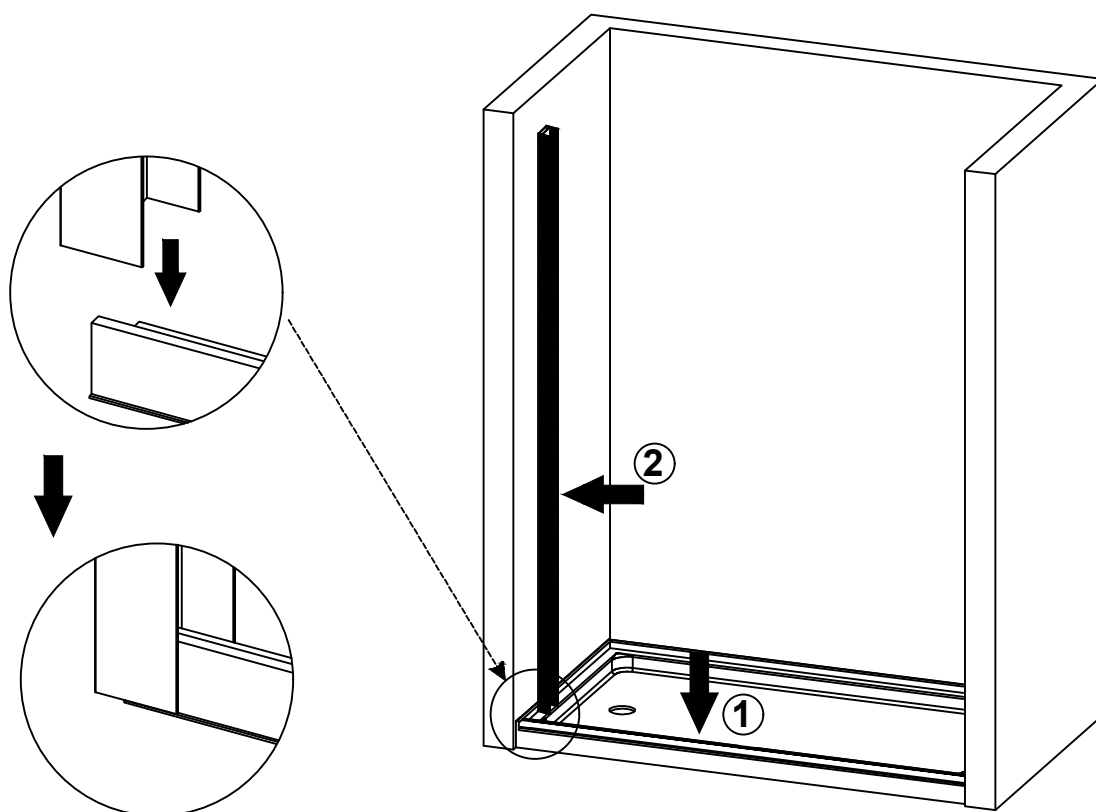
2



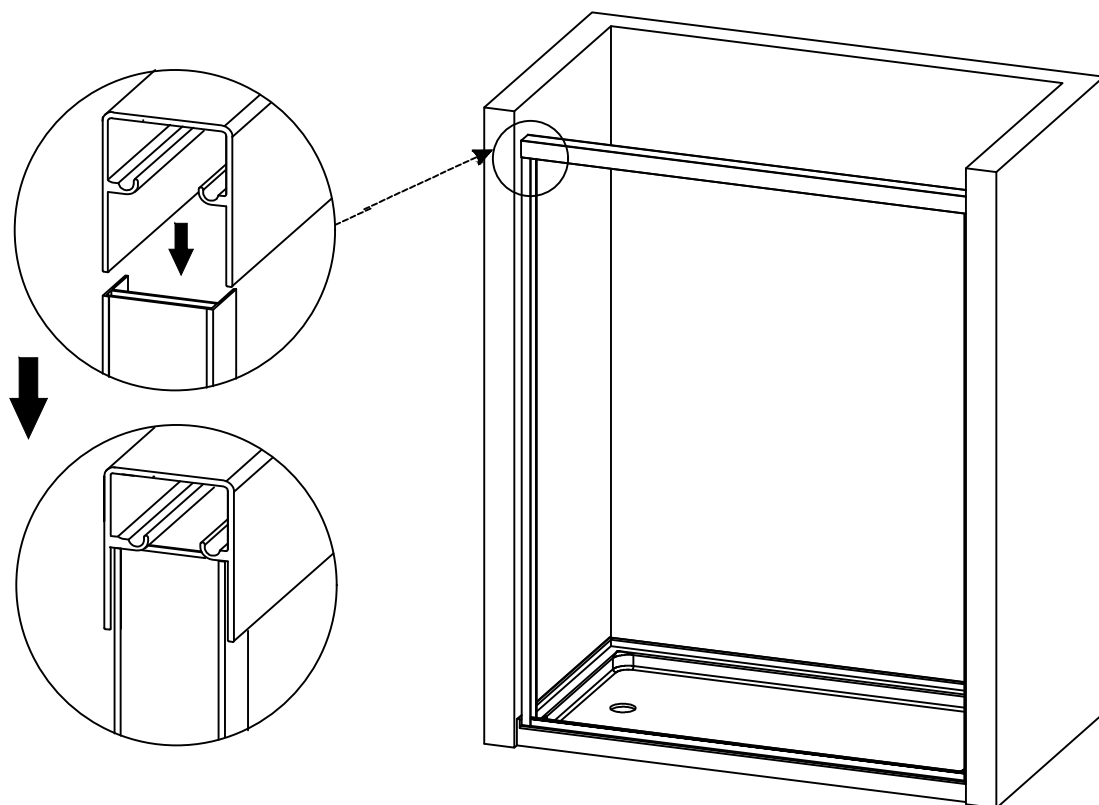
3



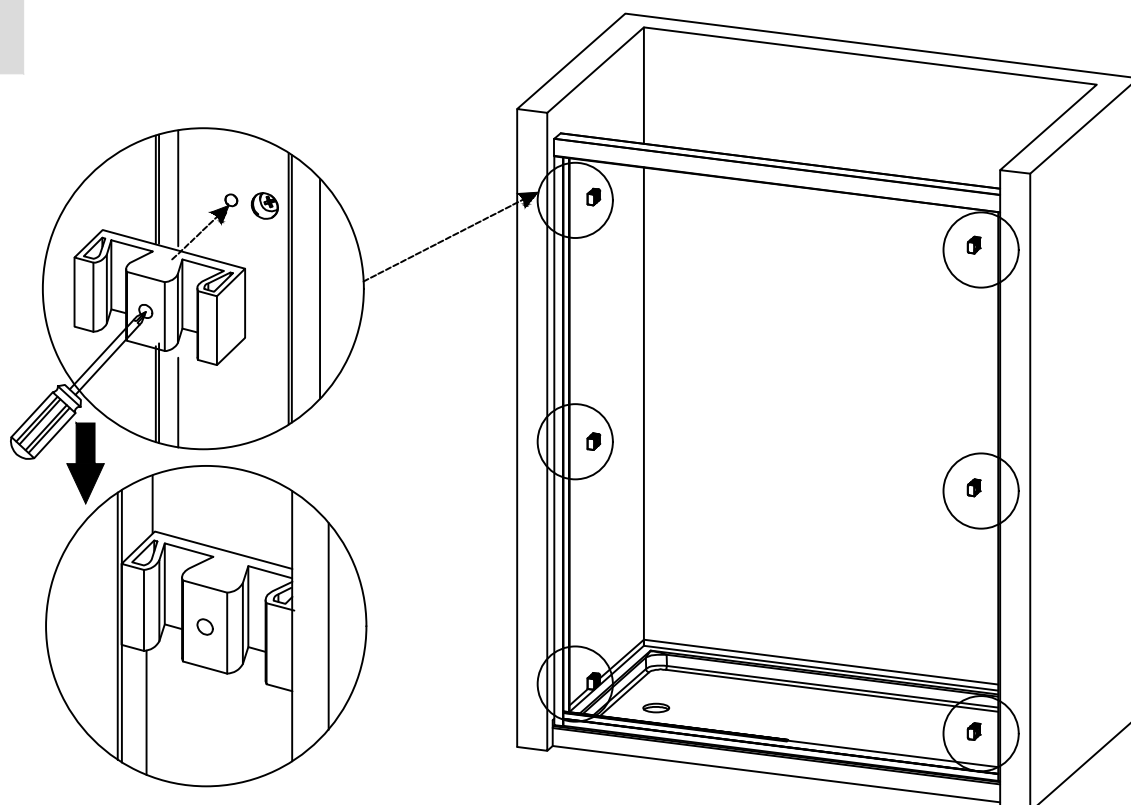
4



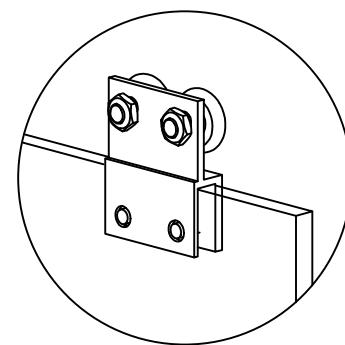
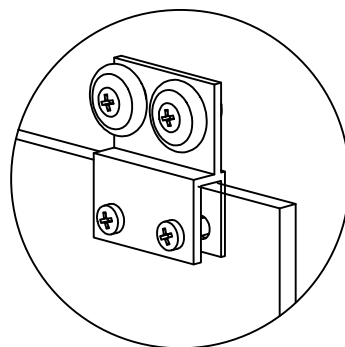
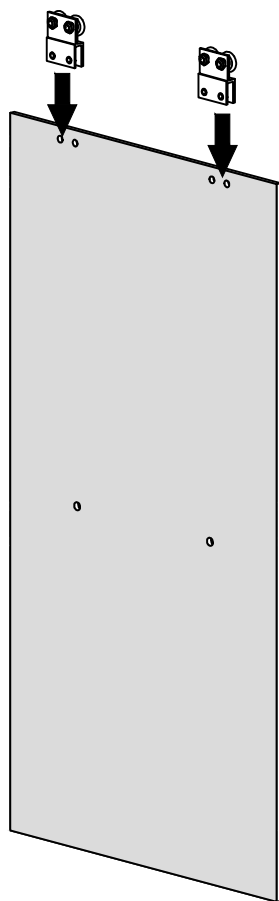
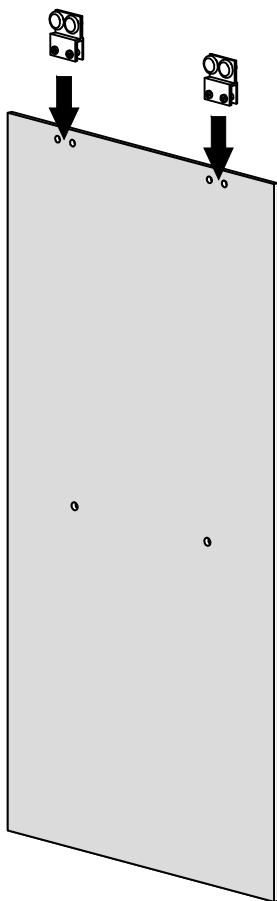
5



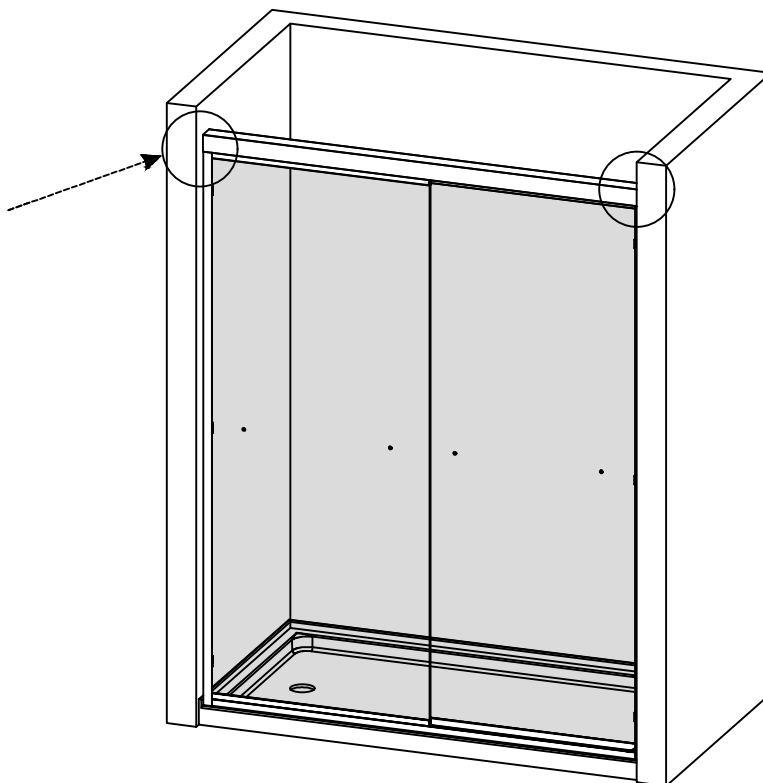
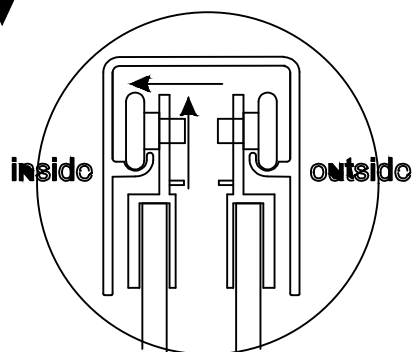
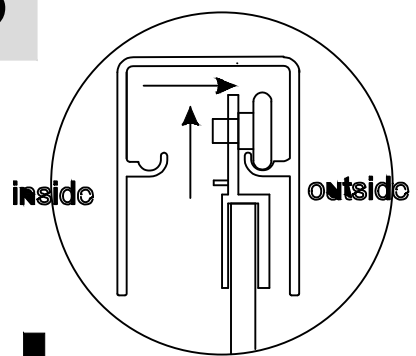
6



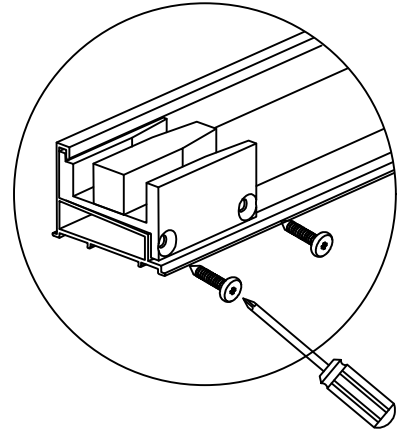
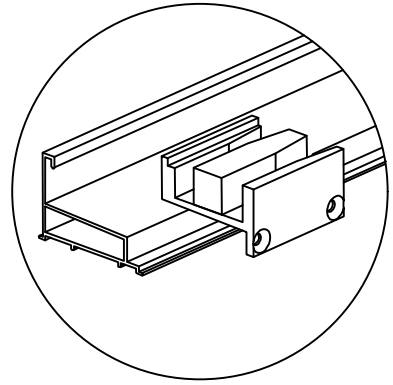
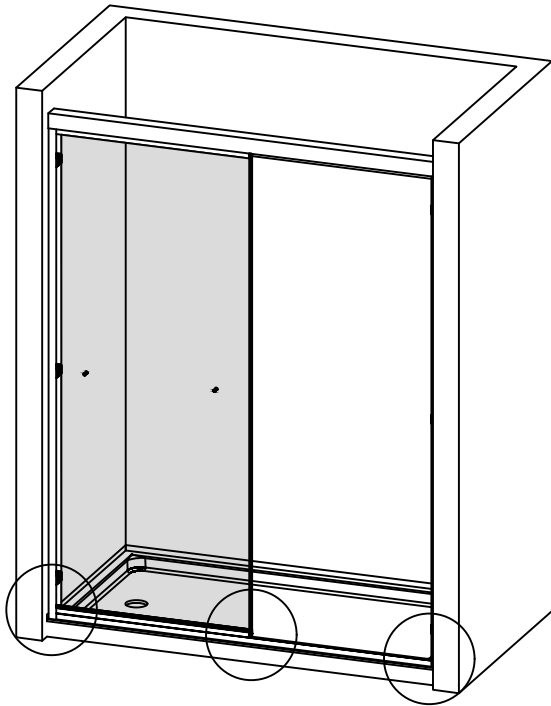
7



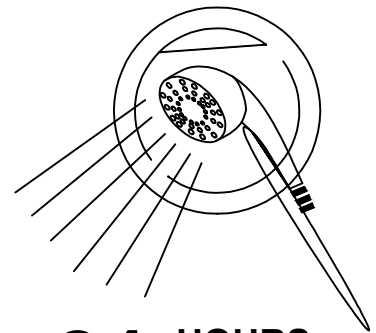
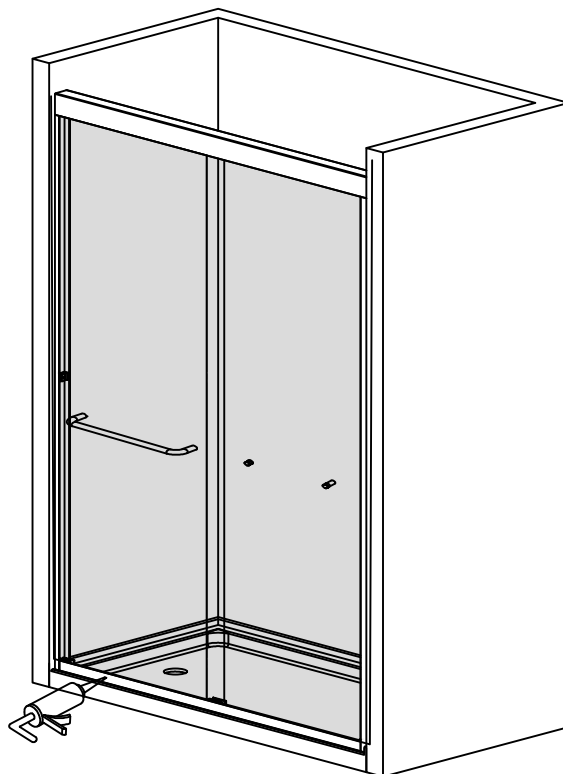
8



9



10



24 HOURS