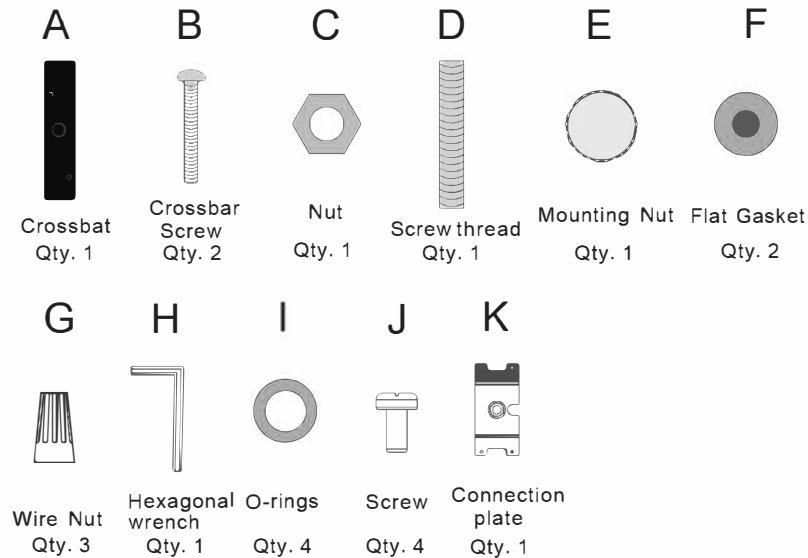


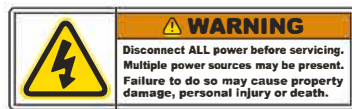
Parts Included:



CSA / UL Safety Requirements

CSA/UL requires that these IMPORTANT SAFETY INSTRUCTION be listed:

- ☐ Before starting installation of this fixture or removal of a previous fixture, disconnect the power by turning off the circuit breaker or by removing the fuse at the fuse box.
- ☐ Consult a qualified electrician if you have any electrical questions or need to replace the driver.



Care Instructions

Arnsberg suggests using only a micro fiber cleaning cloth to clean this fixture. If required, a slightly damp cleaning cloth may be used to spot clean. Do not use common household cleaners on this fixture, as the final finish may be damaged as a result. Enjoy your new Arnsberg fixture.

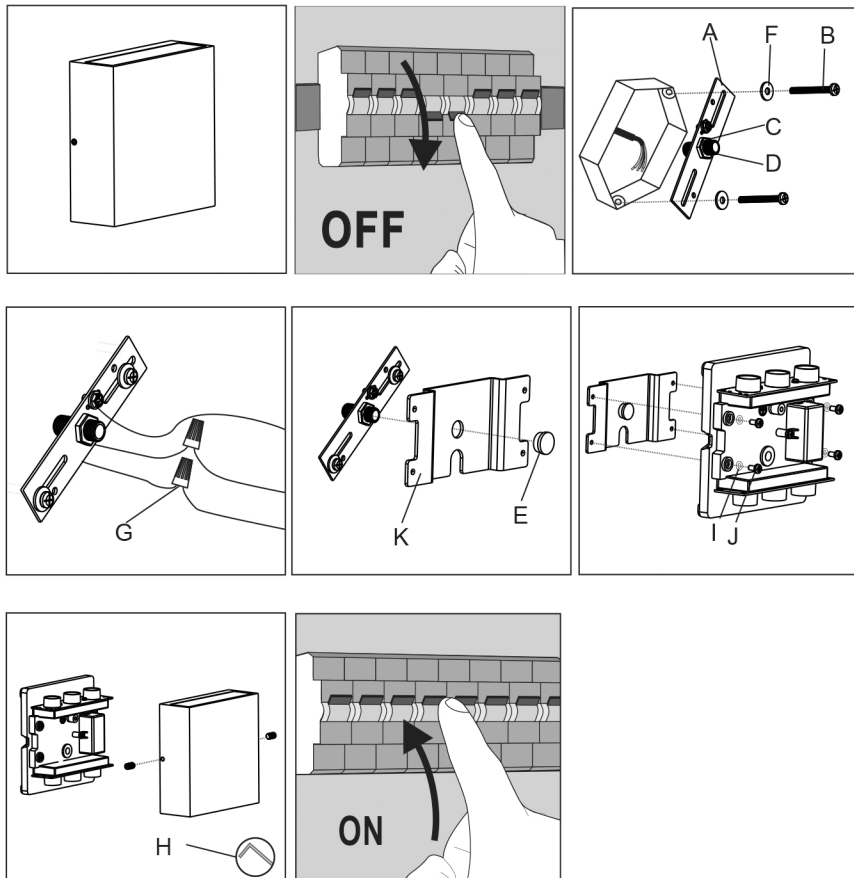
Arnsberg

customerservice@arnsberg.com

www.arnsberg.com

ASSEMBLY INSTRUCTIONS **THAMES** 229360242

Mounting Instructions:



Fixture Cable Length Adjustment (Diagram 2)

