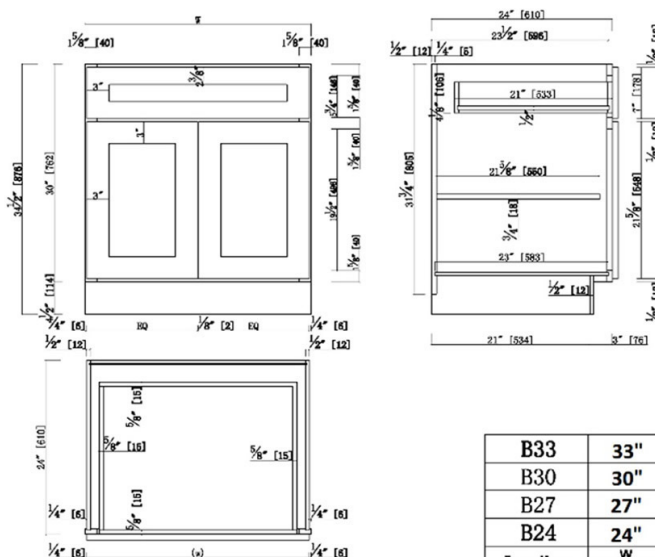


Brookings Unassembled Shaker Base Kitchen Cabinet 33x34.5x24 Espresso



B33	33"	32.5"	16.25"
B30	30"	29.5"	14.75"
B27	27"	26.5"	13.25"
B24	24"	23.5"	11.75"
Item Name	W	(w)	BQ

SPECIFICATIONS

MATERIAL CONSTRUCTION:	Wood
WOOD SPECIES:	Maple
ASSEMBLED DIMENSIONS:	34.5" H x 33" L x 24" D
ASSEMBLED WEIGHT:	71.92 lbs.
KITCHEN CABINET TYPE:	Base
MOUNTING TYPE:	Floor Mount
CONSTRUCTION TYPE:	Face Frame
HINGE STYLE:	Soft Close
DOOR STYLE:	2 Wood shaker doors
DRAWER DIMENSIONS 1:	4.17" H x 21" L x 29.44" D
DRAWER DIMENSIONS 2:	N/A
DRAWER DIMENSIONS 3:	N/A
DWR BOX MATERIAL:	SOLID WOOD
DWR CONSTRUCTION:	Dove Tail
DWR GLIDE:	Dove Tail
FAKE DWR QTY:	0
FAKE DWR LOCATION:	N/A

NUMBER OF SHELVES:	1
SHELF STYLE:	Flat
ADJUSTIBLE SHELVES:	Yes
SHELF ADJUSTIBILITY INCREMENTS:	2.5"
SHELF DIMENSIONS:	31.5" W x 21.625" D
SHELF THICKNESS:	0.75"
SHELF MATERIAL:	Plywood
FACE FRAME MATERIAL:	Solid Maple
SIDES MATERIAL:	Plywood
BOTTOM MATERIAL:	Plywood
BACK PANEL MATERIAL:	Plywood
BACK BRACE MATERIAL:	Wood
TOE KICK INSET WIDTH:	3"
TOOLS NEEDED FOR INSTALLATION:	Phillips Screwdriver Mallet Wood Glue
FASTENER TYPE:	Wood Screw

WARRANTY:	1-Year limited warranty
LEGAL FOR SALE IN CALIFORNIA:	Yes
CARB COMPLIANT:	CARB Phase 2
TSCA TITLE IV COMPLIANT:	Yes



TYPE:
JOB:
ORDER CODE:
APPROVALS: