
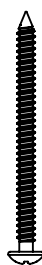





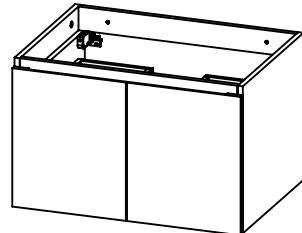
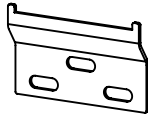
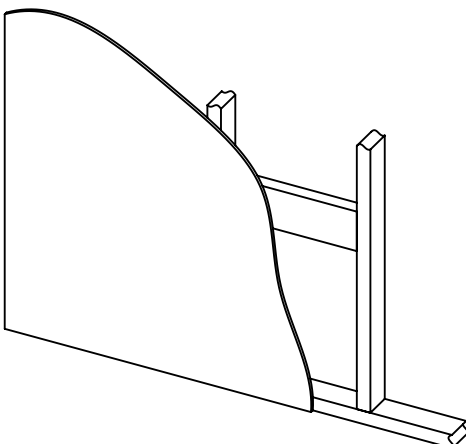
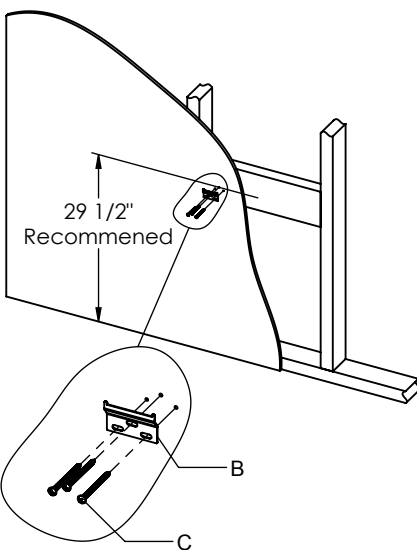
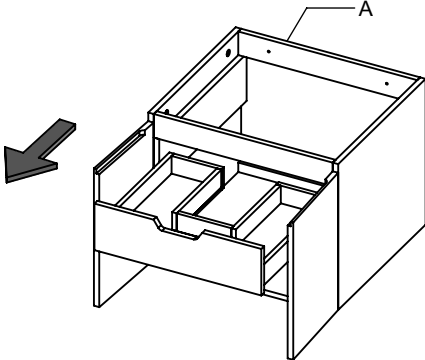
 <p>A x 1 Adams cabinet</p>	 <p>C x 6 Medium size screw</p>	 <p>D x 2 Long size screw</p>	 <p>D x 8 Anchors</p> <p><i>(Discard anchors for installation in the USA. Use wood re-enforced walls instead.)</i></p>	<p>TOOLS REQUIRED</p> <div>  <p>Phillips screwdriver</p>  <p>Measuring tape</p> </div> <div>  <p>Power drill</p>  <p>Pencil</p> </div>	 <p>Finished view</p>
 <p>B x 2 Wall bracket</p>					

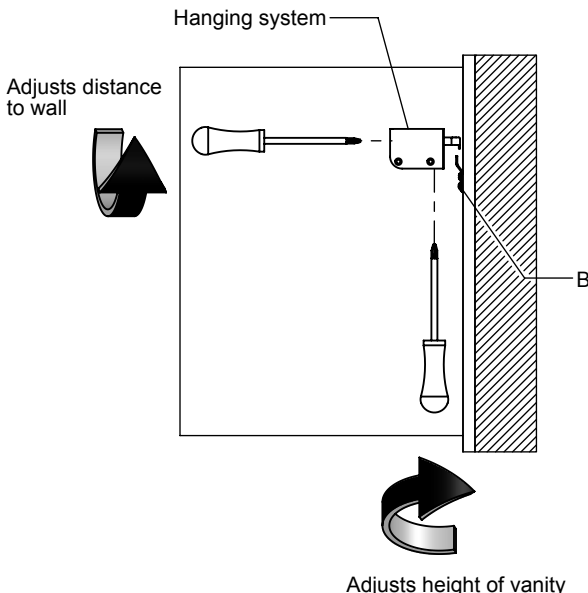
INSTALLATION INSTRUCTIONS

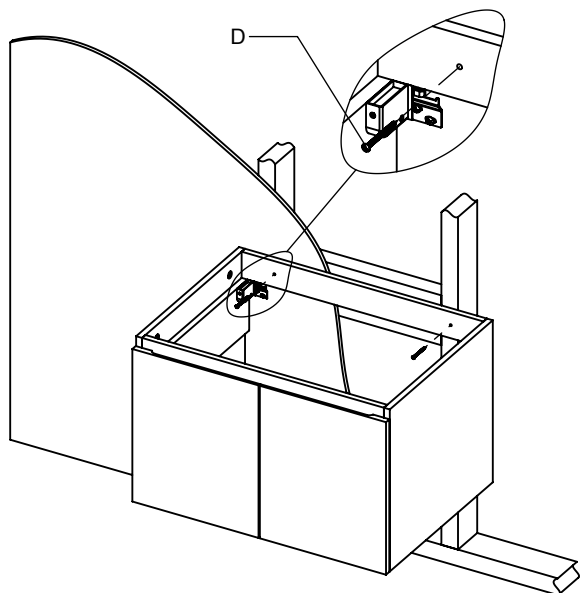
- Re-enforce the wall using a sheet of plywood or 2" by 6" wood beams.


- Measuring for the desired height, secure wall brackets (B) to the wall. Make sure that screws go into the re-enforced area of the wall. 29.5" to the top screw is the recommended height.


- Remove drawer from ADAMS cabinet (A). See drawer removal below.

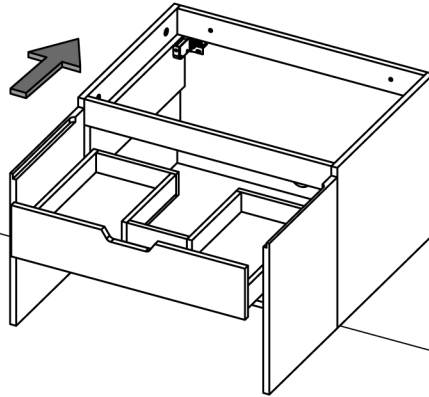

- Hang cabinet (A) onto wall brackets (B) and adjust hanging system as shown below.


- Secure cabinet (A) to the wall using long screws (D). Make sure to drive screws (B) into re-enforced area of the wall.



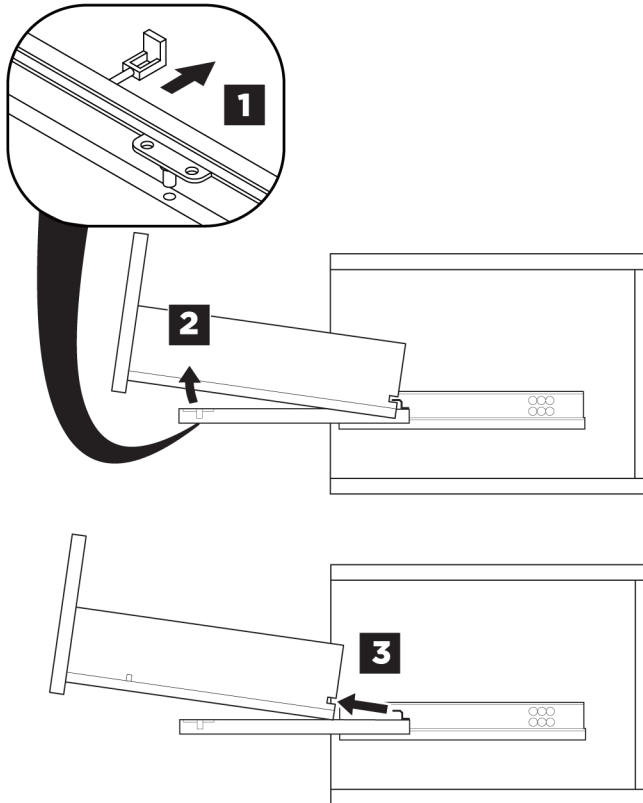
6

Insert drawer back inside the cabinet. See drawer installation below.

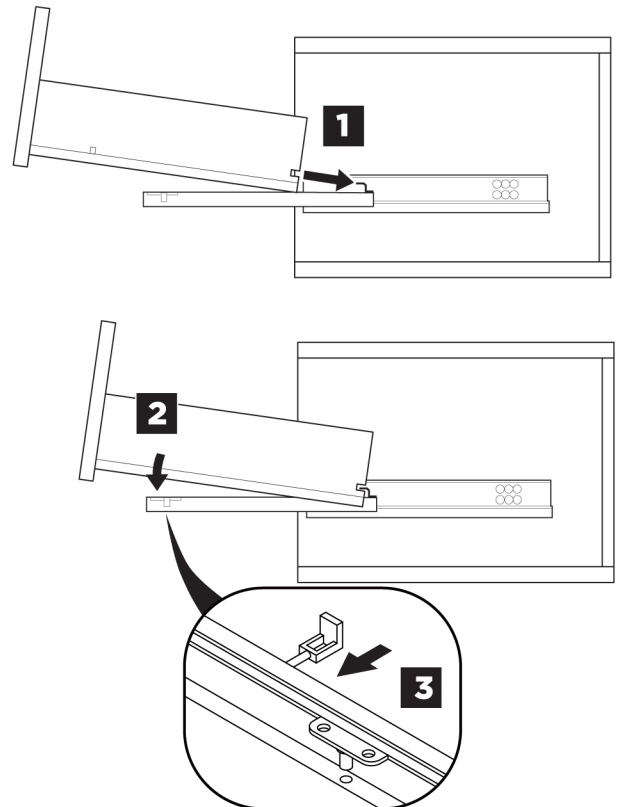


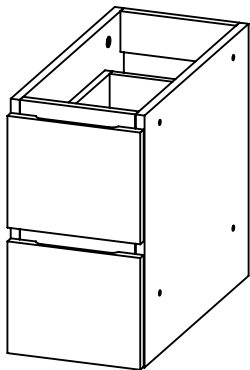
DRAWER REMOVAL AND INSTALLATION

REMOVAL



INSTALLATION

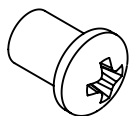




A x 1 Emmet 11 Bridge
IC4011-



B x 8 Threaded
rod



C x 16 Screw cap

TOOLS REQUIRED



Phillips
screwdriver



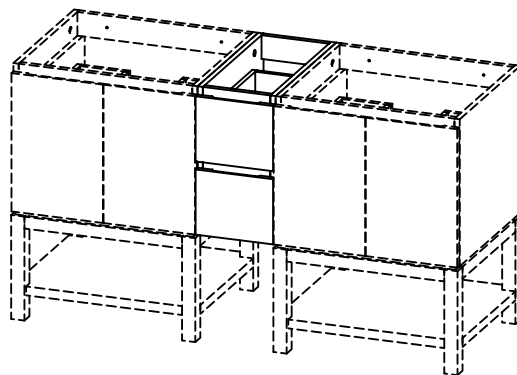
Measuring
tape



Power drill
3/8" dia drill bit



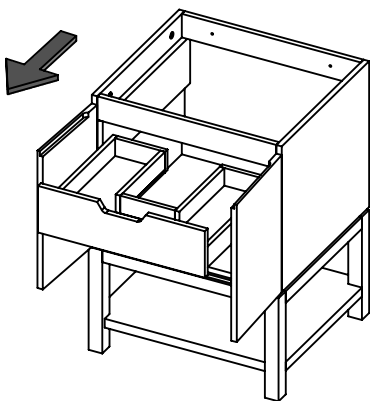
Pencil



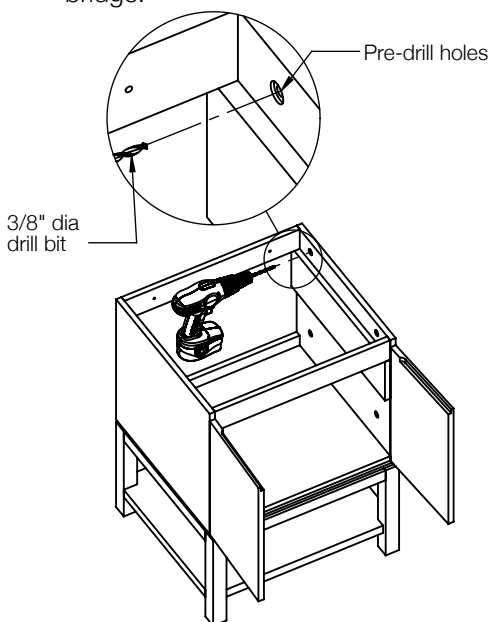
Finished view

INSTALLATION INSTRUCTIONS

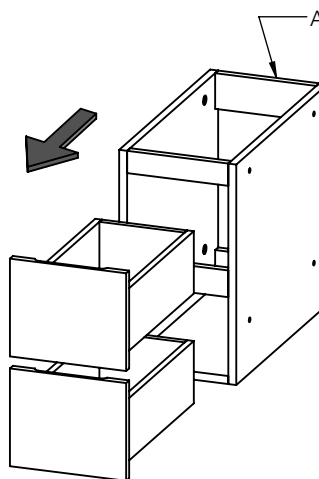
- 1** Remove drawer from EMMET vanity. See drawer removal below. (EMMET vanity sold separately.)



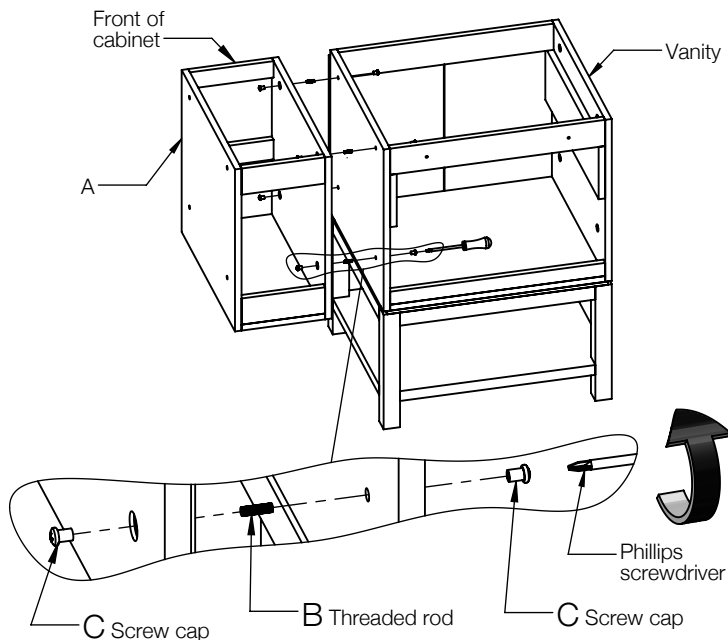
- 2** Finish drilling the pre-drilled holes in EMMET vanity. Make sure to drill only the side that will connect to EMMET bridge.



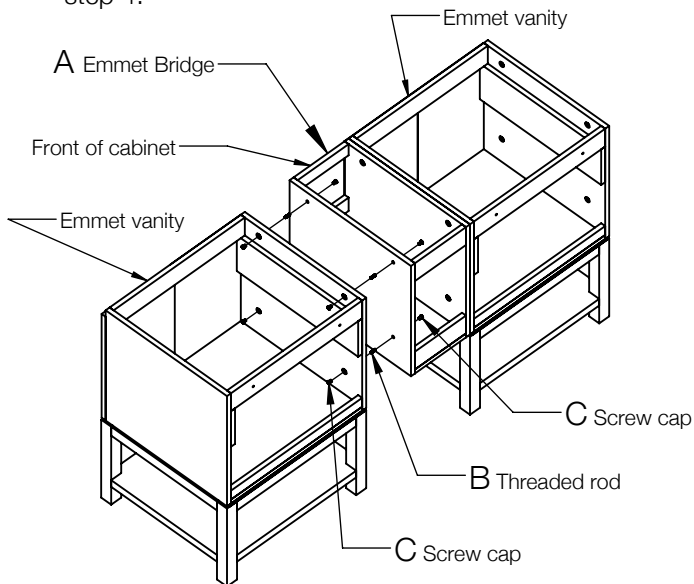
- 3** Remove drawer from EMMET bridge (A). See drawer removal below.



- 4** Attach EMMET bridge (A) to vanity by screwing the threaded rod (B) into screw cap (C) as shown below. Use a phillips screwdriver to tighten the screw caps.

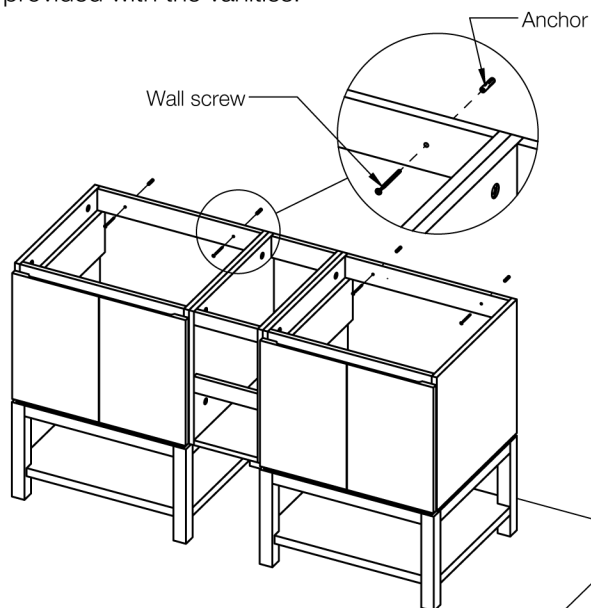


- 5** Repeat step 1 and 2 using second vanity. Attach second vanity to the other side of EMMET bridge (A) by repeating step 4.



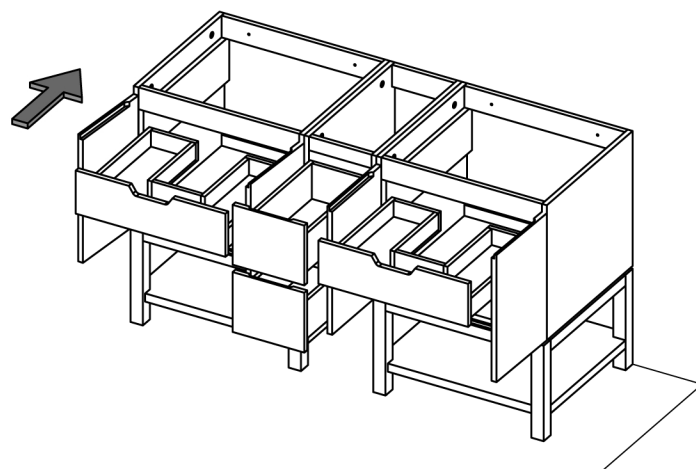
6

Fix vanity to the wall using the screw and anchors provided with the vanities.



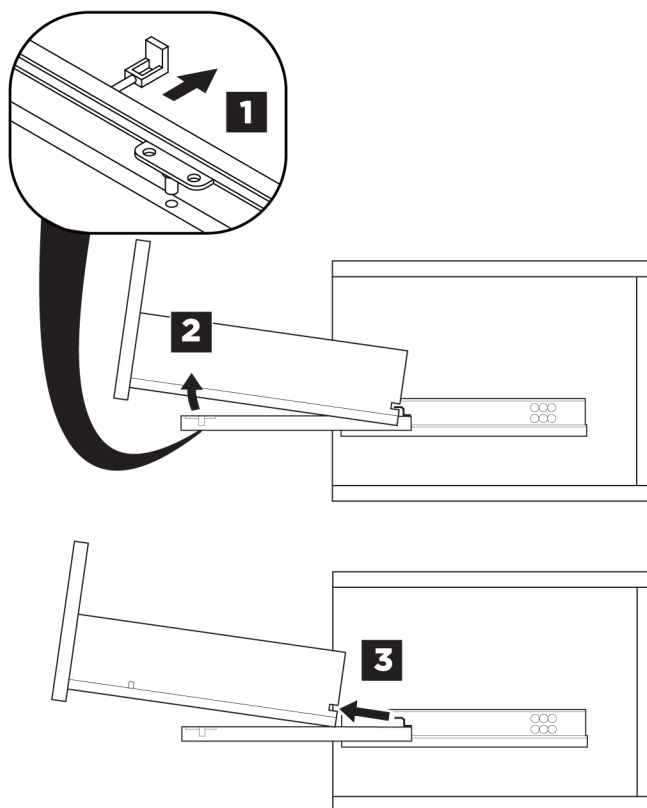
7

Insert all drawers back inside the cabinets. See drawer installation below.

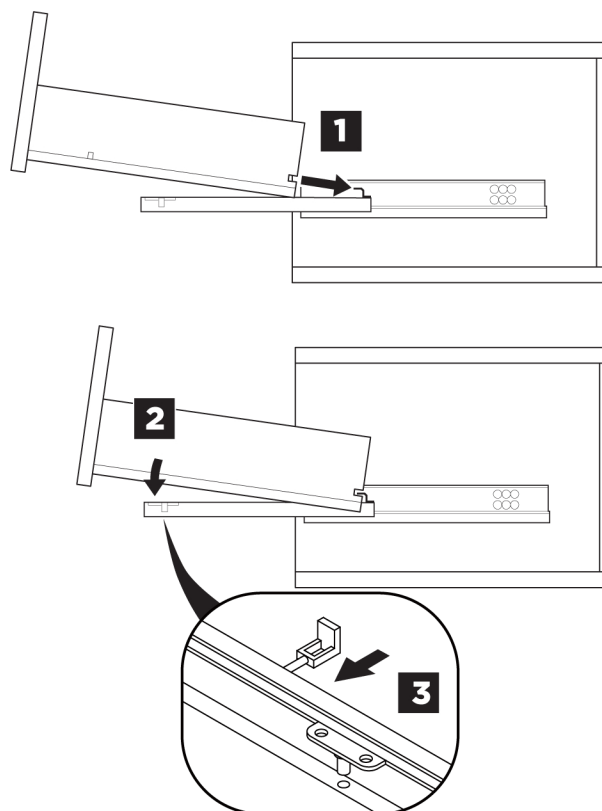


DRAWER REMOVAL AND INSTALLATION

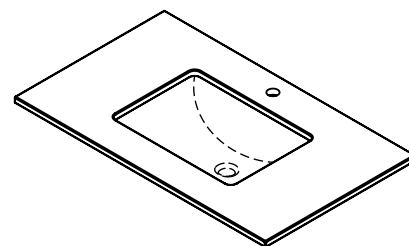
REMOVAL



INSTALLATION



1. Prepare counter top for installation by placing it upside down on a smooth surface.
2. Place undermount basin in the final position and make a mark around it using a marker.
3. Apply stone adhesive (liquid nail or similar) on the top edge of basin. See fig 1.
4. Attach basin to counter top using the threaded rods, L brackets, flat washers, spring washers, and wing nuts as shown in fig 1. Do not fully tight the wing nut at this step.
5. Use previous marking to align basin in the final position
6. Tighten wing nut and let adhesive dry.
7. If necessary, apply caulking in the inside of basin where it meets with the counter top.
8. Install counter top onto cabinet using silicone or similar adhesive. Check your alignments before allowing the adhesive to dry.



Finished view

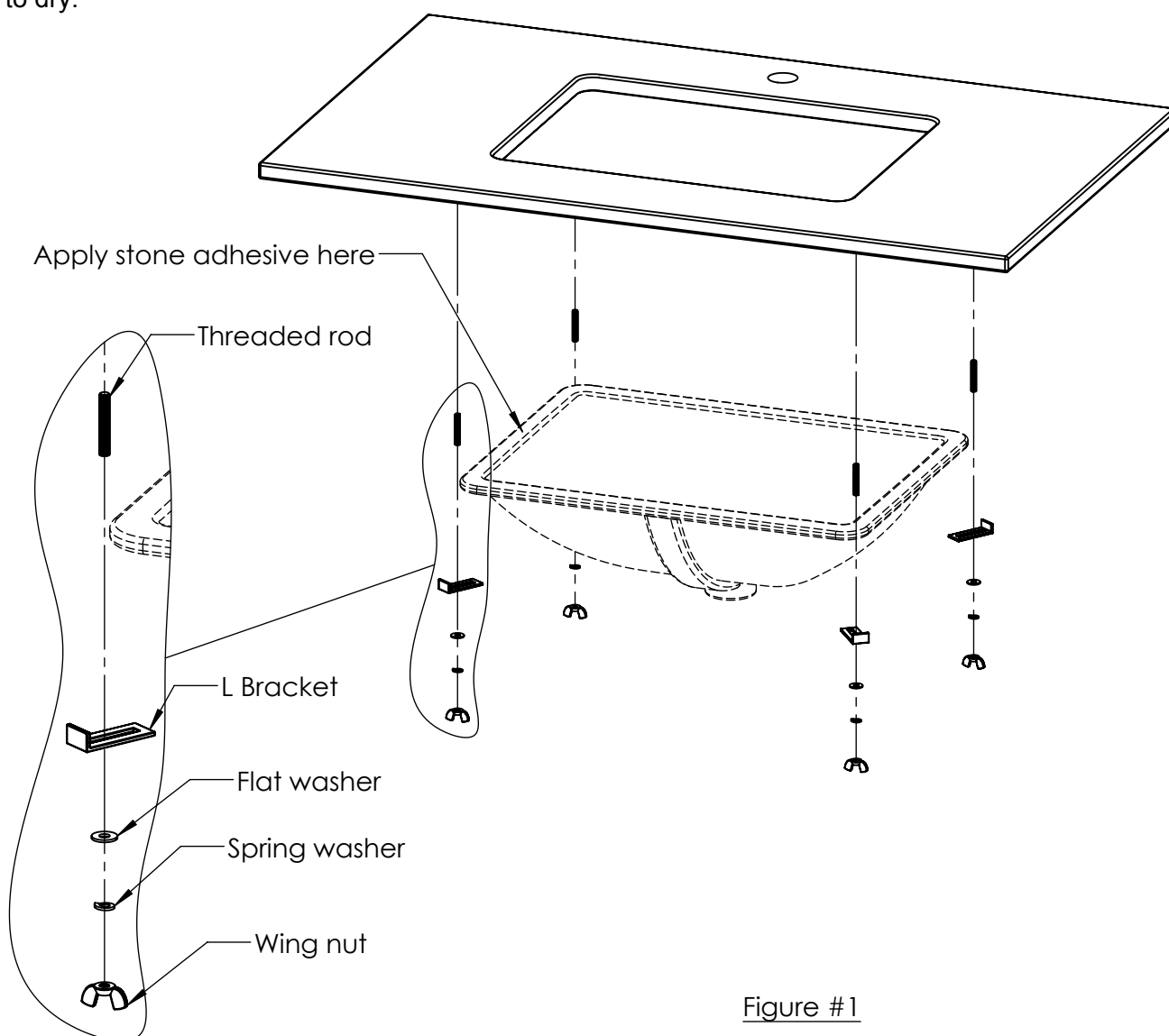


Figure #1