



Parker House  
FURNITURE

## Assembly Instruction

Item No : PUR#480/PUR#481

Description : EXECUTIVE DESK TOP / EXECUTIVE DESK BASE

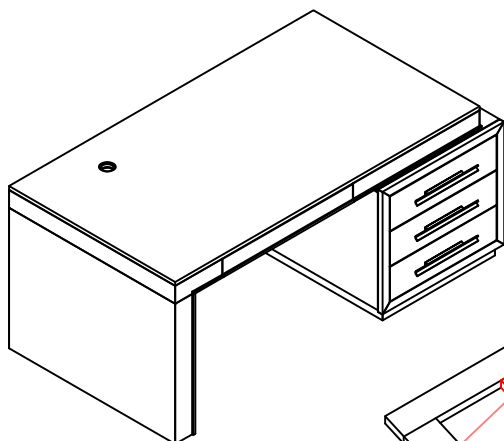
Rev 1 :2021-07-27

### HARDWARE LIST :

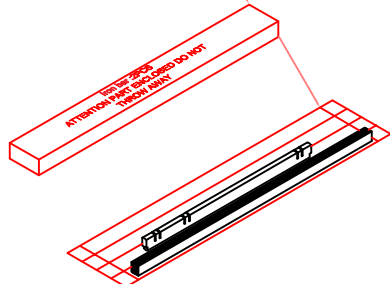
| NO | Description                         | Sketch | QTY |
|----|-------------------------------------|--------|-----|
| A  | Allen Wrench 4mm                    |        | 1   |
| B  | Allen Bolt Ø5/16"*38mm              |        | 8   |
| C  | Lock Washer Ø5/16"*12mm             |        | 8   |
| D  | Flat Washer Ø5/16"*19mm             |        | 8   |
| E  | Allen Wrench 4mm for electric drill |        | 1   |
| F  | Iron Bar 546*15*2                   |        | 2   |
| G  | Wire Grommet                        |        | 1   |
| H  | Plank partition                     |        | 1   |
| I  | Dowel                               |        | 2   |

### PARTS LIST :

| PUR#480 EXECUTIVE DESK TOP  |                 |
|-----------------------------|-----------------|
| ①                           | ②               |
| DESK TOP: 1PC               | LEFT FRAME: 1PC |
| PUR#481 EXECUTIVE DESK BASE |                 |
| ③                           |                 |
| DESK BASE: 1PC              |                 |



Hardware and  
Iron bar pack  
is here



PUR#481 EXECUTIVE  
DESK BASE

Hardware pack  
is here



PUR#480 EXECUTIVE  
DESK TOP



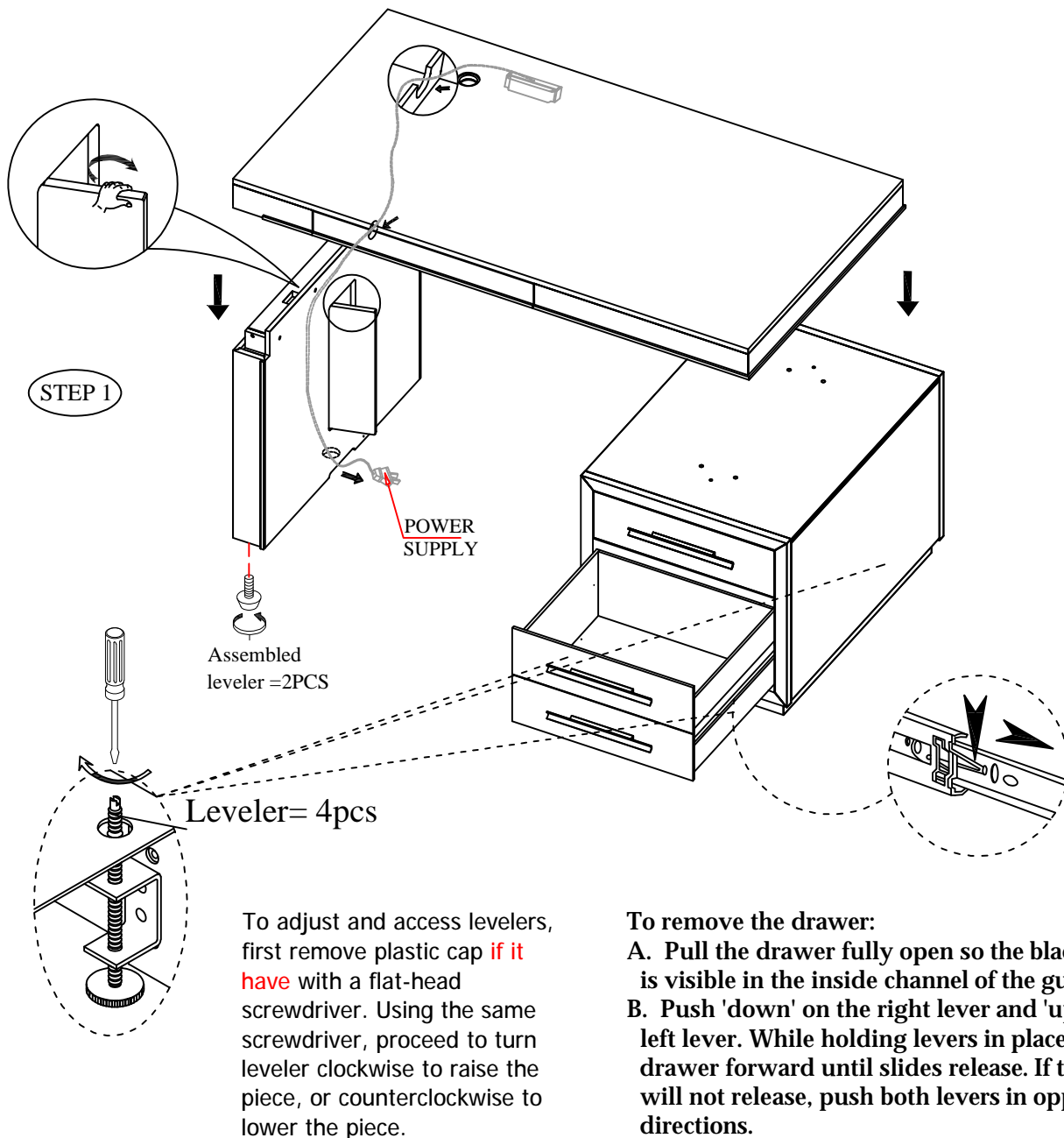
Parker House  
FURNITURE

## Assembly Instruction

Item No : PUR#480/PUR#481

Description : EXECUTIVE DESK TOP / EXECUTIVE DESK BASE

Rev 1 :2021-07-27





Parker House  
FURNITURE

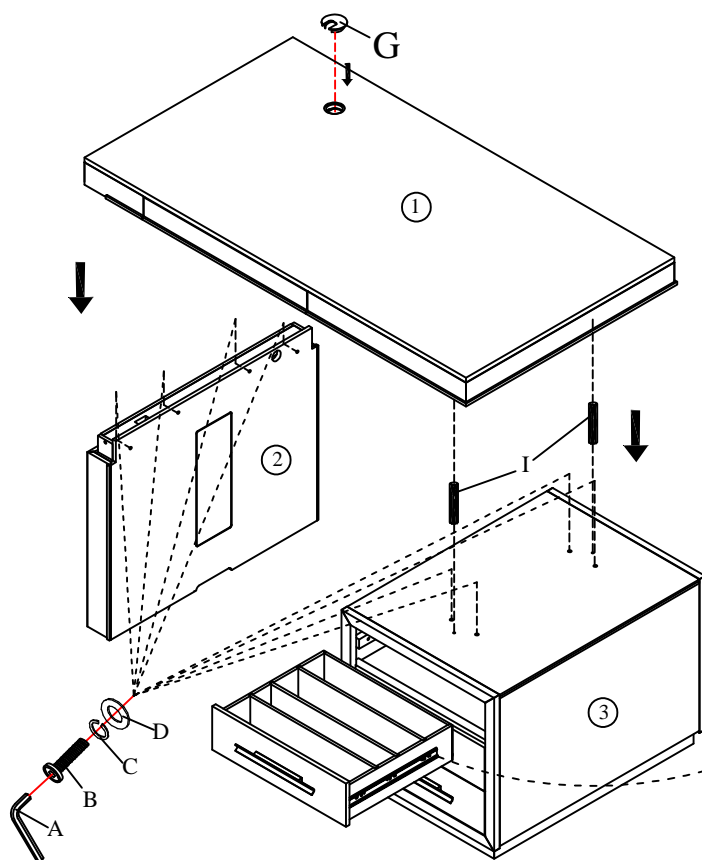
## Assembly Instruction

Item No : PUR#480/PUR#481

Description : EXECUTIVE DESK TOP / EXECUTIVE DESK BASE

Rev 1 :2021-07-27

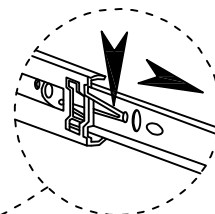
### STEP 2



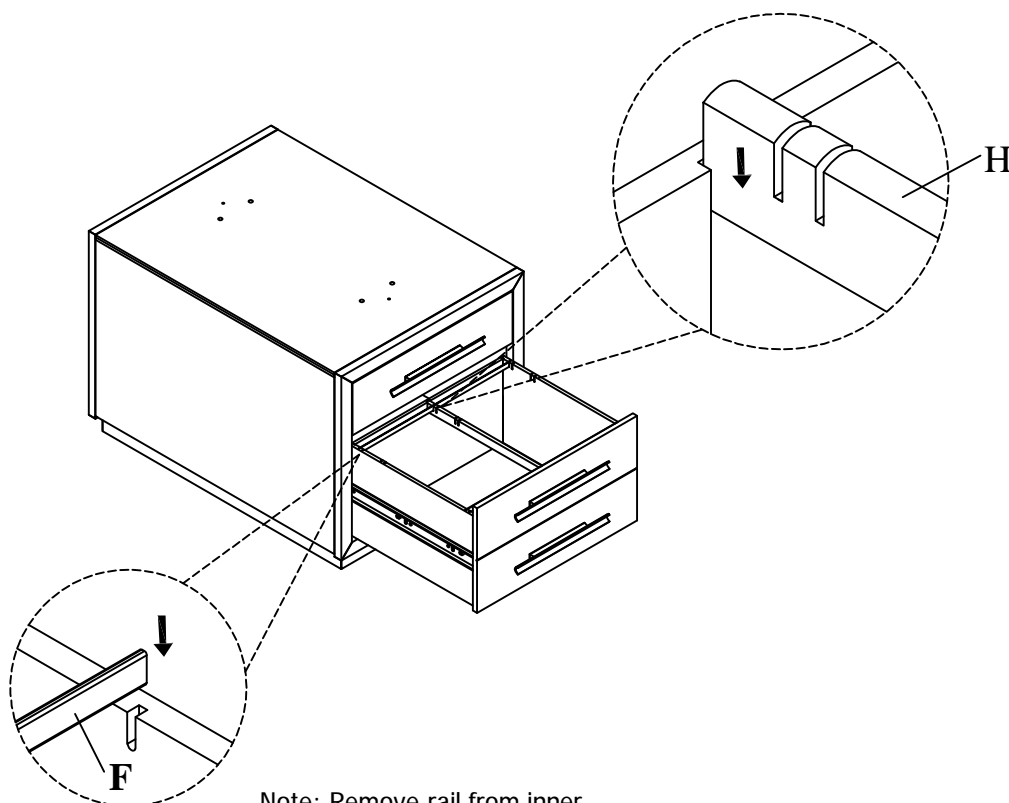
To remove the drawer:

A. Pull the drawer fully open so the black lever is visible in the inside channel of the guides.

B. Push 'down' on the right lever and 'up' on the left lever. While holding levers in place, pull drawer forward until slides release. If the slides will not release, push both levers in opposite directions.



### STEP 3



Note: Remove rail from inner box.