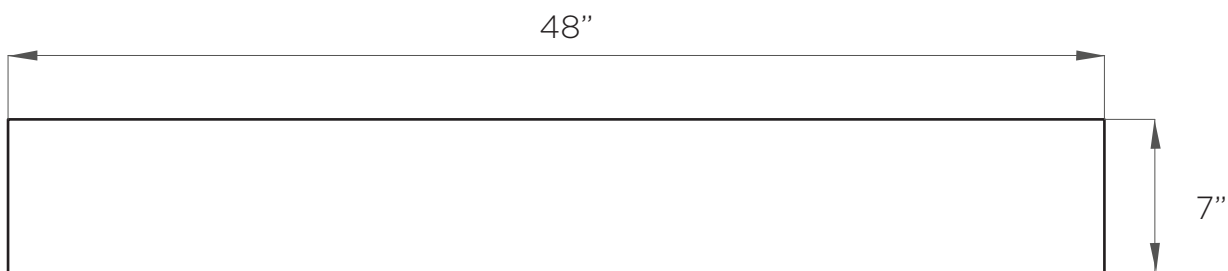


Model: JHA1020101

## Pecan Luxury Vinyl Plank Flooring

Top



Thickness: 5/16"

All measurements are approximate and may vary +/- 1/4

# Maykke

[www.maykke.com](http://www.maykke.com)

## **Installation and Warranty Guide**



### Interlocking Floor Planks

JHA1010101 JHA1020101 JHA1020102

### Tools needed:

1. Utility knife & straight edge
2. Measurement tape
3. Shears for cutting around irregular
4. 1/8" spacers

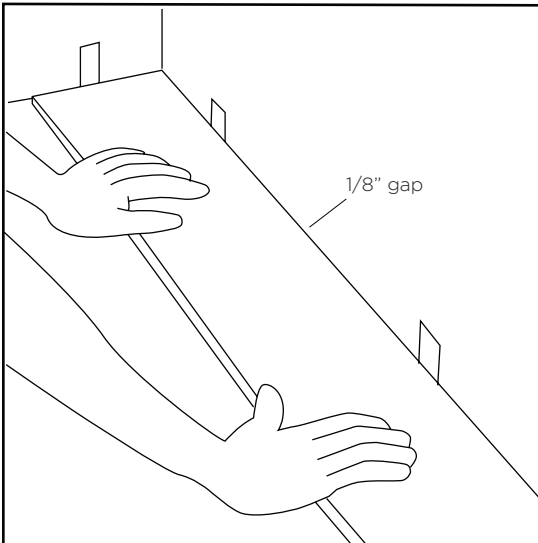
#### NOTICE:

- Do not change or modify the product in any way. Doing so may compromise the products structural integrity and will void the warranty.
- Installation instructions must be followed. Any diversions from the installations may risk property damage and will void the warranty
- If you are unfamiliar with floor tile installation please consult a professional.

#### IMPORTANT:

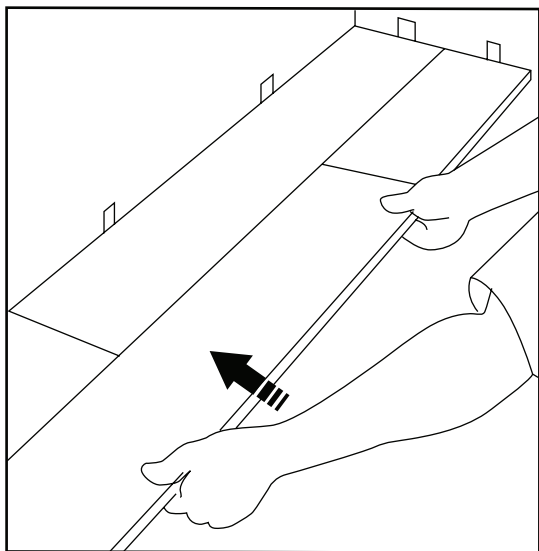
- Observe all state and local building codes.
- Carefully read all installation and care instructions before proceeding.

### Installation

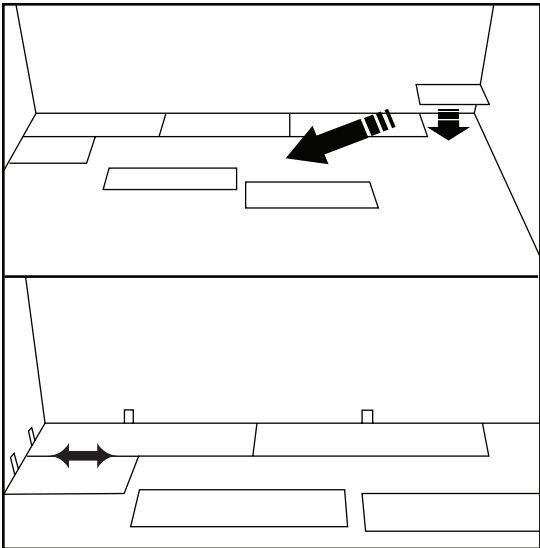


1.Lay a row of loose planks without securing them to each other first to dertermine if you need to adjust the length of the first plank to avoid a small piece of length of 12" on the oppo-site wall from where you start.

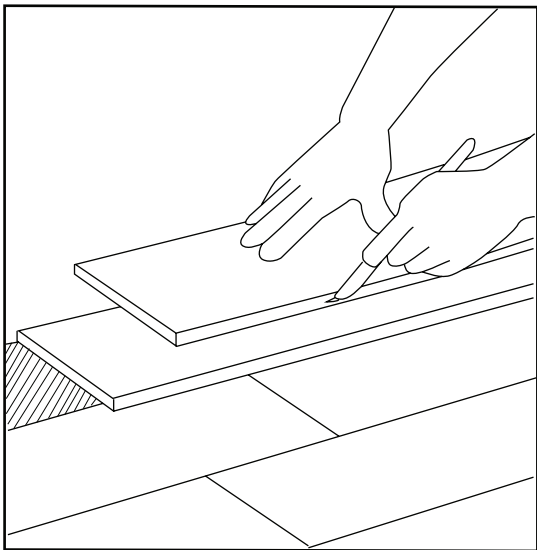
Installation should start in a corner and proceed from the wall with tongue facing out away from the wall. Allow a minimum gap of 1/8" for sub-floor movement or product expansion, which should be covered by molding. Lay the first row in a straight line.



2.When installing, stagger the rows so that the short edge seams are not in a staright uniform ine. To start the second row with plank cut at about 2/3 length. Score the plank and snap. The next plank, interlock the short side first, leav-ing it slightly away from the long side and then slide into the long side.



3. When cutting for length, be sure to always cut the short side of the plank with the groove edge. The remaining piece can then be used on the opposite side of the room, at the end of that row of layout permits. Start the third row with the plank cut at  $\frac{1}{3}$  of a length. Again the remaining piece can be used at the opposite end of the row, if the layout of the room permits.



4. Continue this pattern for the remainder of the rows to be installed. Always place the cut end of the first plank against the wall. Fitting around irregular objects is no problem. Simply make a pattern out of heavy paper to fit around pipes or irregular objects. Place the pattern upon the plank and trace. Cut along trace lines using a utility knife, and lay plank. Be sure to leave a minimum of  $\frac{1}{8}$ " expansion space around all fixed objects, floor vents and door frames.

### Notes:

- Keep some spare planks in case there is a unforeseen need for replacement.
- Room temperature should be above 67F and below 85F when installing

For warranty information please check [www.maykke.com](http://www.maykke.com)  
For customer service concerns please call: [877.659.2858](tel:877.659.2858) or email: [support@maykke.com](mailto:support@maykke.com).