

CENTRAL BRASS COMPANY

1277 Heil Quaker Blvd.

La Vergne, TN 37086

(800) 321-8630

www.centralbrass.com

INSTALLATION

Tools:



Adjustable Wrench



Plumbers Putty



Teflon Tape



Rags

Model Number: 0805, 0808, 0826, 0897, 0905, 0908, 0926, 0997, 6056, 6086, 6266, 6076 TC-2, T-2 Series

Warnings and Notes:

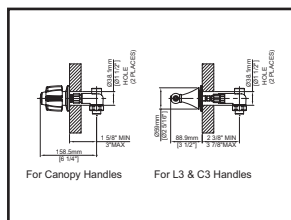
Check with local plumbing code requirements before installation.

This product should be installed by a local listed plumber.

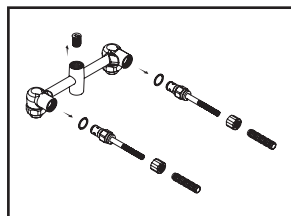
Do not use plumbers putty on threads.

Installation Steps:

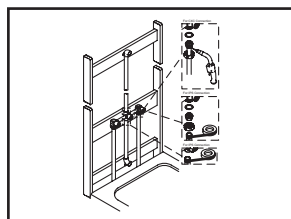
Two Handle Tub & Shower Set



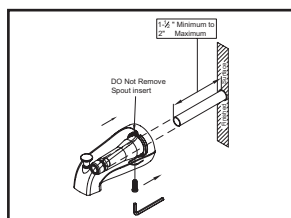
(1) Determine the location of the valve to be installed for new installation. For existing installation look at the installation drawing and ensure there is enough room to install the valve.



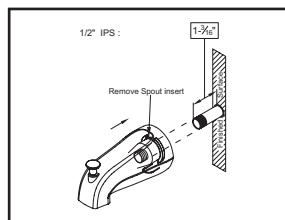
(2) For CXC installation: Remove all stems and transfer valve (for two handle valve) out of valve body before soldering inlet connections to prevent parts from being damaged, install stems and transfer valve back to valve body after valve body has cooled down. Warning: Always fully open (counterclockwise turn to the end) diverter stem before remove/install diverter stem to prevent from damaging Celcon washer.



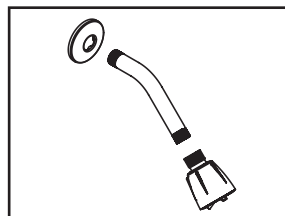
(3) Install the outlet connections. Apply Teflon tape at threaded connections. Install inlet connections. Hot water supply should be on the left hand side and cold water supply should be on the right hand side.



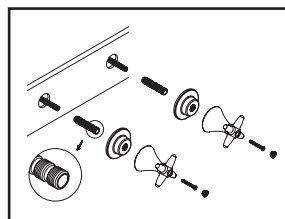
(4a) For slip-fit tub spout installation: The 1/2" nominal copper tube must be cut with a minimum length of 1-1/2" to a maximum length of 2" from finished surface of tub or wall. The end of copper tube should be chamfered free of any burrs to prevent cutting or nicking O-ring inside the spout. The outside surface should be sanded free from nicks and scratches. Press and twist the spout over copper tube flush with the finished tub or wall surface. Tighten the set screw, but do not overtighten.



(4b) For IPS tub spout installation: The 1/2" pipe thread nipple must be kept at a minimum length of 1-3/16" from finished surface of tub or wall. Remove Allen screw, twist and remove spout insert by using 1-1/32" size socket. Also remove black washer. Apply Teflon tape at threaded end of nipple. Screw tub spout onto the nipple and tighten by strap wrench.



(5) Caution: Only use Teflon tape on the thread ends of shower arm to avoid plugging showerhead spray outlet. Use silicon to caulk the back of shower arm flange. Slide shower arm flange over shower arm. Apply Teflon tape on both thread ends of shower arm and install shower arm, carefully tighten shower arm with help of strap wrench. Press shower arm flange against finished wall. Turn on water to flush system. Turn off water and attach showerhead to shower arm.



(6) For L3 and C3 Handles:- Ensure the distance between center of valve inlets to wall is 2-3/8" Min. to 3 7/8" Max. If needed then mark the distance from the end of the replacement brass nipple. Carefully cut the nipple at the outer edge of the step closest to the mark. Carefully cut stem post similarly but at the inner edge of the step. Avoid cutting the spline and threaded area. The cut must be straight and all burrs removed. For All Installation:- Thread escutcheon to the valve. Use silicon to caulk the back of the escutcheon. Install the cold, hot and diverter handles. Install the screws. For L3 and C3 handles place the caps.

Central Brass Company, Inc. Limited Lifetime Warranty

Central Brass Company, Inc. warrants its products to the original consumer purchaser to be free from defects in material and workmanship as long as the consumer purchaser owns it. Dated proof of purchase must accompany all warranty claims. All finishes carry a lifetime warranty in residential and 10 year warranty in commercial plumbing service as long as the consumer purchaser owns it.

If the faucet should ever develop a leak or drip during warranty period, Central Brass Company, Inc. will free of charge provide the parts necessary to put the faucet back in good working condition and will replace any part or finish proven defective under normal installation, use, and service to the original consumer purchaser. Damage as a result of misuse, abuse, accident, or improper installation, will consequently void this warranty. Use of non-genuine Central Brass parts will consequently void this warranty. Replacement parts can be obtained from your local dealer or directly from Central Brass. Central Brass recommends using a certified plumber for all faucet installation and repair.

This warranty is limited to replacement of defective parts only. Incidental and consequential damages, labor charges, repair, or replacement costs are expressly excluded. Some states do not allow the exclusion or limitation in incidental or consequential damages, so the above limitation may not apply to you. This warranty gives you specific legal rights, as you may have other rights which vary from state to state.

Installation or maintenance and cleaning must be in compliance with instructions furnished with every Central Brass product. If you find a problem with your product, please immediately contact your nearest Central Brass Company, Inc. dealer or sales representative.

*10-year limited warranty on commercial and multi-family projects except for products specified below. Effective for products sold after 07/01/2017

Sensor Faucets: - The mechanics of the Central Brass Sensor Faucets are warranted for five (5) years from the date of installation. The electronics and solenoid are warranted for a period of one (1) year from the date of installation.

Pre-Rinse:- The mechanics of the Central Brass Pre-rinse Spray valve are warranted for five (5) years from the original date of purchase.

MAINTENANCE AND CARE INSTRUCTIONS

Use clean water to clean the surface of the faucet and dry with a 100% cotton cloth. If water is allowed to evaporate on the faucet surface can lead to build up of mineral deposits. Cleaning with a damp non-abrasive sponge and buffing it dry with a clean soft cloth should help keep product looking beautiful. To remove water spots, use warm water and a soft, damp cloth. Hard water stains may be removed using a 50/50 solution of white vinegar and water. Making sure that to rinse thoroughly with water afterward. As cleaner manufacturers may change their formulations at any time, therefore we do not recommend any specific cleaner.

Avoid using the following which can damage product finish:

- Avoid industrial cleaners and abrasive cleaners, such as those used for toilet bowls, green Scotch-Brite heavy duty scrub sponges, Scrubbing Bubbles Bathroom Cleaner and Lysol Basin Tub, Soft Scrub, and Tile Cleaner.
- Avoid products that state on the label that they remove tarnish and rust, and those containing hydrofluoric, hydrochloric and/or phosphoric acids and caustic agents.
- Avoid harsh abrasives or polishes
- Avoid bleach-based cleaners

Attention California Residents:

"WARNING: This product contains chemicals known to the State of California to cause cancer, and birth defects or other reproductive harm."

Central Brass
C O M P A N Y, Inc.

For more care information or trouble shooting inquiries about your Central Brass product, please call: **Central Brass Company, Inc.** (800) 321-8630
Monday-Friday 8 AM to 8 PM EST (5 AM to 5 PM PST)
www.centralbrass.com