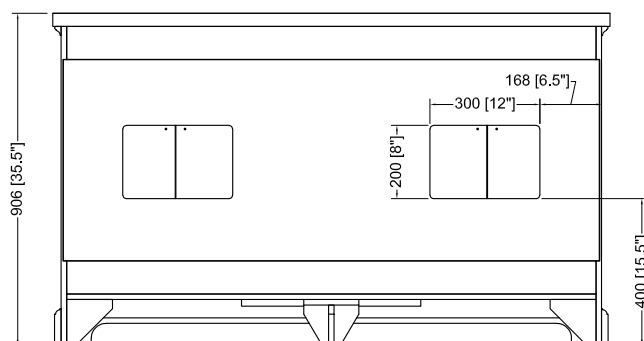
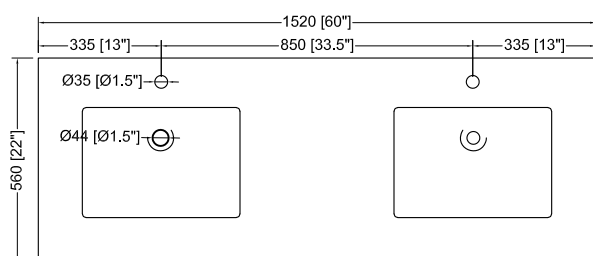
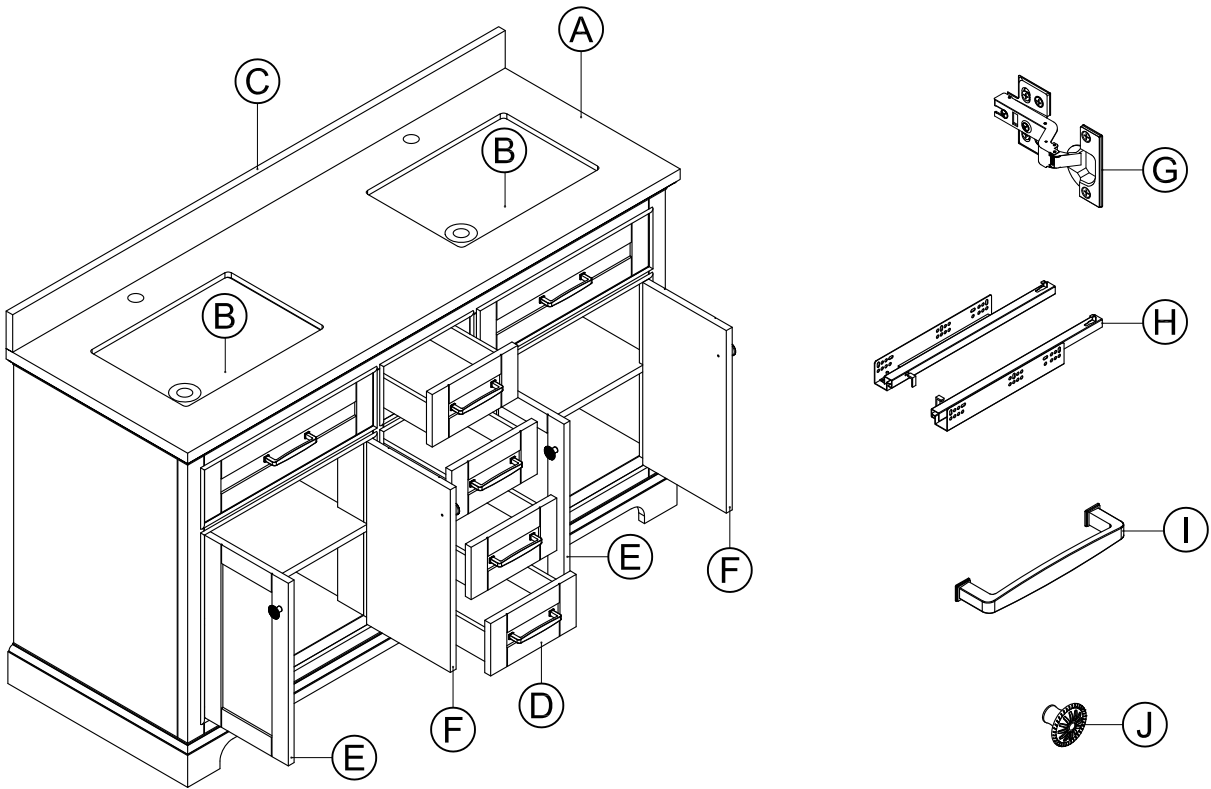


Measures: millimeter [inch]

DIMENSIONS

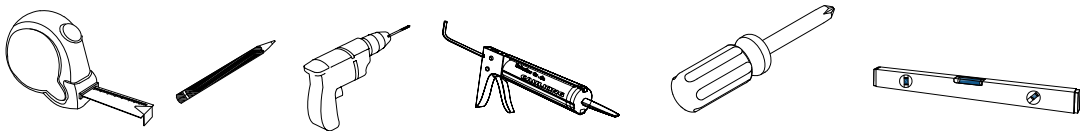


PART LIST



| PART# | DESCRIPTION | QUANTITY |
|-------|---------------|----------|
| A | Countertop | 1 |
| B | Basin | 2 |
| C | Backsplash | 1 |
| D | Drawer | 4 |
| E | Door(left) | 2 |
| F | Door(right) | 2 |
| G | Hinge(door) | 8 |
| H | Drawer glides | 4 |
| I | Handle | 6 |
| J | Knob | 4 |

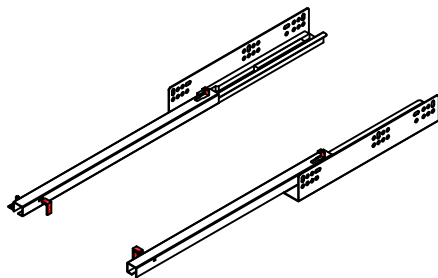
TOOLS REQUIRED (not supplied)



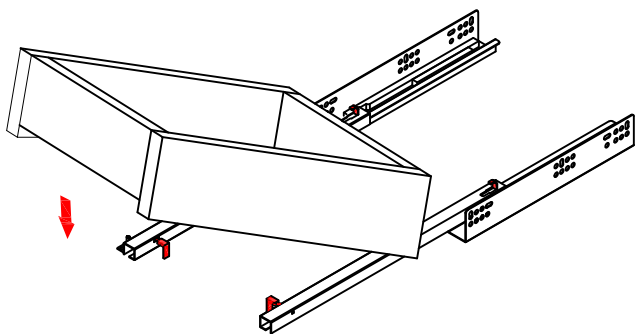
Adjust Slider For Drawer

INSTALL

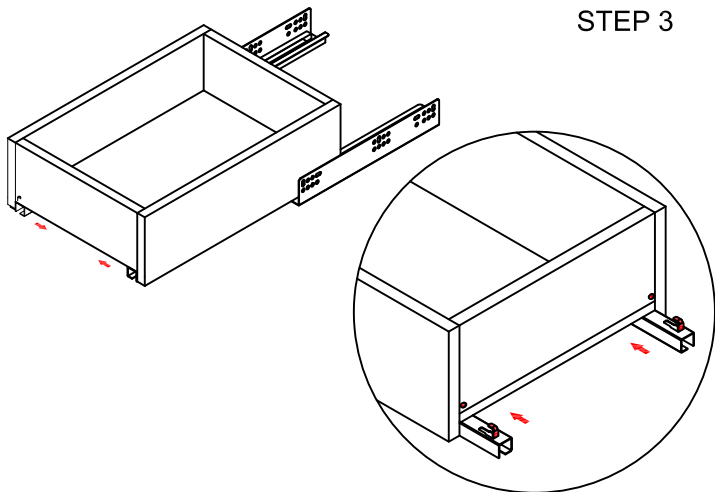
STEP 1



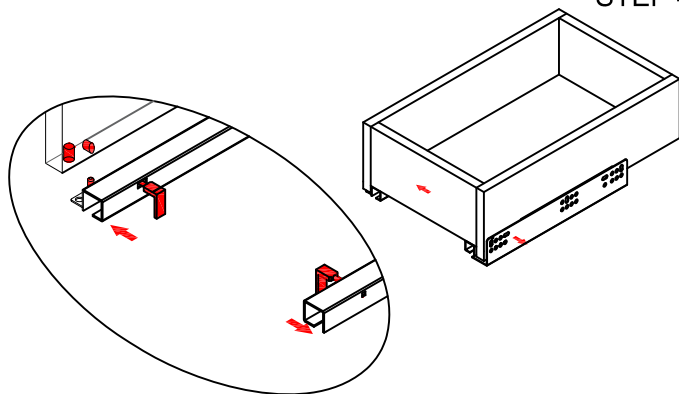
STEP 2



STEP 3

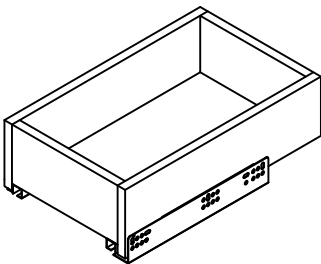


STEP 4

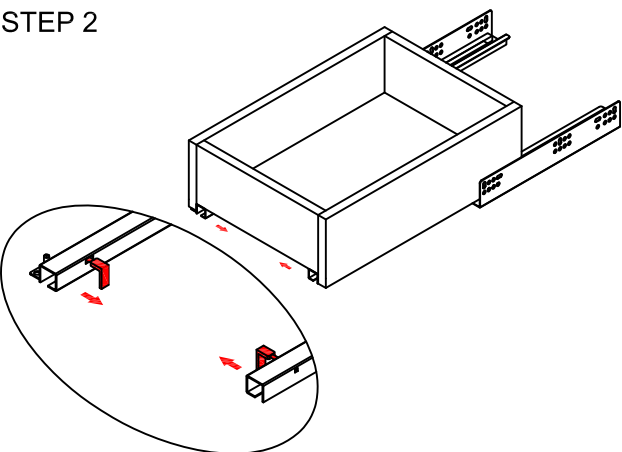


REMOVE

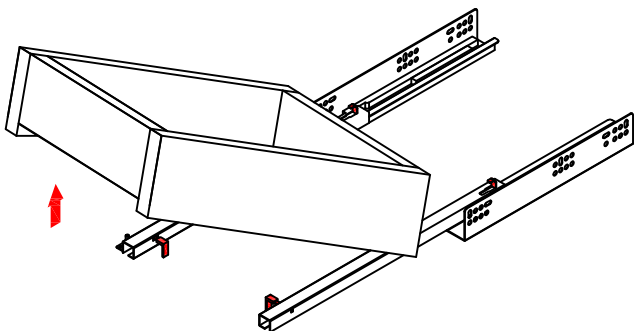
STEP 1



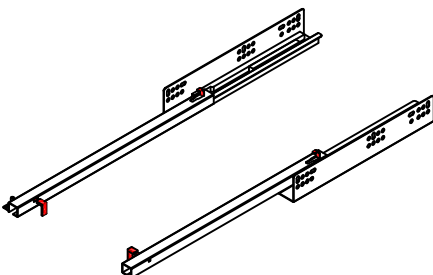
STEP 2



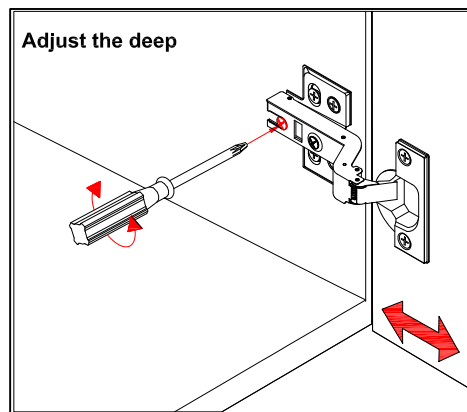
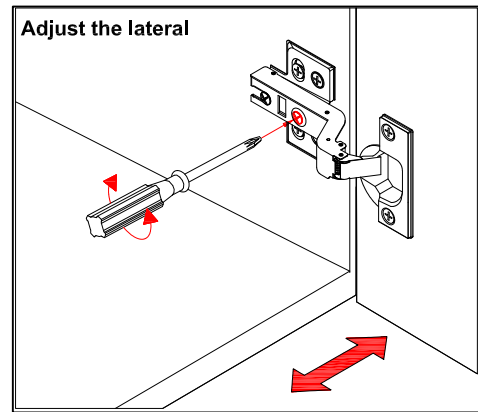
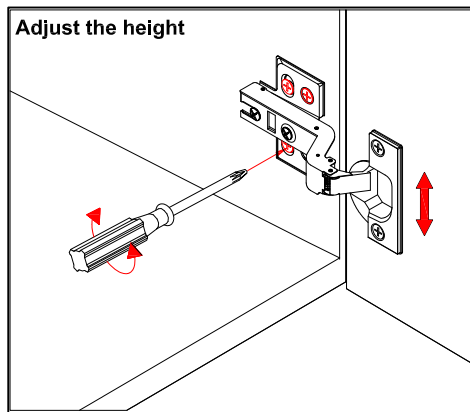
STEP 3



STEP 4

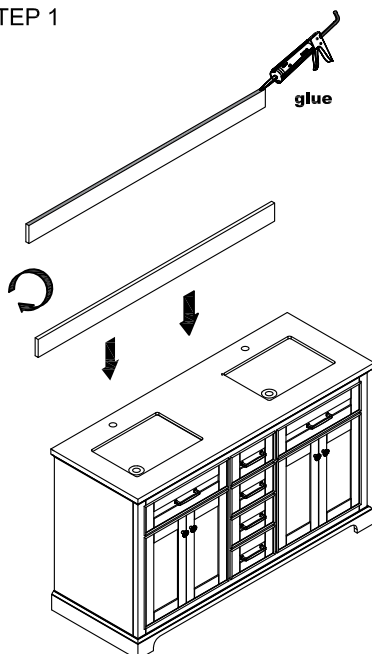


INSTALLATION AND ADJUSTION OF HINGE

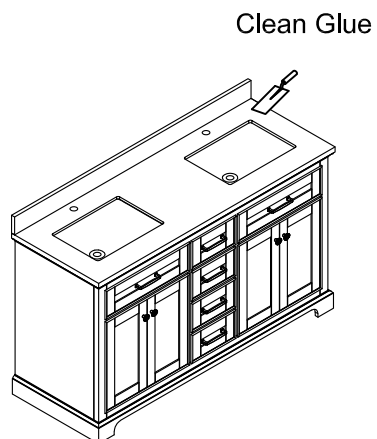


Install Backsplash

STEP 1



STEP 2



STEP 3

