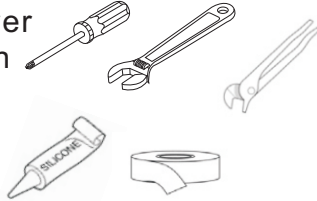


Installation

Tools You May Need

- Phillip Screwdriver
- Crescent Wrench
- Pump Plier
- Silicone
- Plumbers Tape



For Model: F-S01

Single Handle Lavatory Faucet

Maintenance

Your new faucet is designed for years of trouble-free performance. Keep it looking new by cleaning it periodically with a soft damp cloth.

Avoid abrasive cleaners, steel wool and harsh chemicals. These will dull the finish and void your warranty.

Safety Tips

- If you use soldering for the installation of the faucet, all cartridges and washers will have to be removed before using flame. Otherwise, the warranty will be void on these parts.
- Wear eye protection when cutting water supply lines.

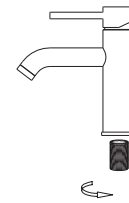
Important Points

Prior to beginning installation, turn off the cold and hot water lines. Turn on faucet to release build-up pressure. When installing faucet, turn on the connector nuts finger tight. Use wrench to tighten connectors.

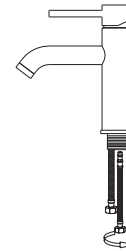
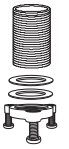
Have a question?
Just call 323-932-1297
9:00am to 5:30 pm PST
Monday-Friday



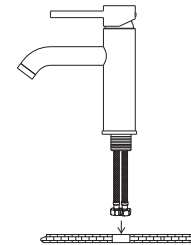
Bosconi



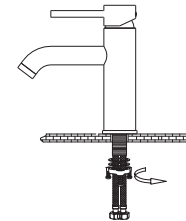
I
Screw mounting shank into faucet base



II
Screw two water supply lines
into faucet inlet holes in the
bottom of faucet body.



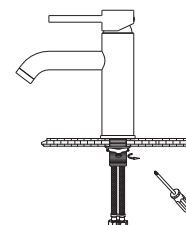
III
From above, insert mounting
shank and water supply lines
through hole on sink.



IV
From underneath, feed the
plastic washer and mounting
nut over the water supply lines
and mounting shank.

Thread the mounting nut on to
the mounting shank.

Tighten the mounting nut
to the underside of the sink.



V
Tighten the mounting nut
retaining screws until faucet
is firmly secured to sink.

LIFETIME FAUCET AND FINISH LIMITED WARRANTY

All parts and finishes of Bosconi faucets are warranted to the original consumer purchaser to be free from defects in material and workmanship for as long as the original consumer purchaser owns their home. Bosconi recommends using a professional plumber for all installation and repair.

Bosconi will replace, free of charge, during the warranty period any part of finish that proves defective in material and/or workmanship under normal installation, use and service. Replacement parts may be obtained by calling 323-932-1297 (in the U.S.) or by writing to:

Mercury Import Group Inc.
425 S Fairfax Ave.
Suite 201
Los Angeles, CA 90036

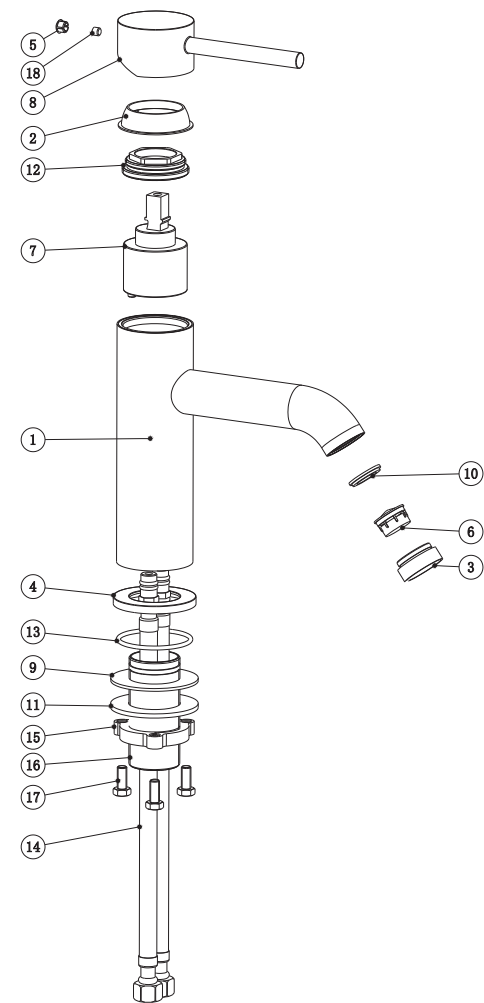
This warranty is extensive in that it covers replacement of all defective parts and even finish, but these are the only two things that are covered. Labor charges and/or damage incurred in installation, repair, or replacement as well as any other kind of loss or damages are excluded. Proof of purchase (original sales receipt) from the original consumer purchaser must be made available to Bosconi for all warranty claims. This is the exclusive warranty by Bosconi, which does not make any other warranty of any kind, including the implied warranty of merchantability.

This warranty excludes all industrial, commercial and business usage, whose purchasers are hereby extended a one year limited warranty from the date of purchase, with all other terms of this warranty applying except the duration of the warranty. This warranty is applicable to Bosconi faucets manufactured after January 1th, 2015.

Any damage to this faucet as a result of misuse, abuse, or neglect, or any use of other than genuine Bosconi replacement parts will void the warranty.

This warranty applies only to Bosconi faucets installed in the United States of America.

Parts Diagram /List



No.	Name	Quantity
1	Body	1
2	Cover	1
3	Metal Ring	1
4	Base	1
5	Indicator	1
6	ABS Aerator	1
7	Ceramic Cartridge	1
8	Handle	1
9	Washer	1
10	Rubber	1
11	Installation Gasket	1
12	Retainer	1
13	O-Ring	1
14	Hose	2
15	Nut	1
16	Mounting Shank	1
17	Screw	3
18	Screw	1

Have a question?
Just call 323-932-1297
9:00am to 5:30pm PST
Monday-Friday