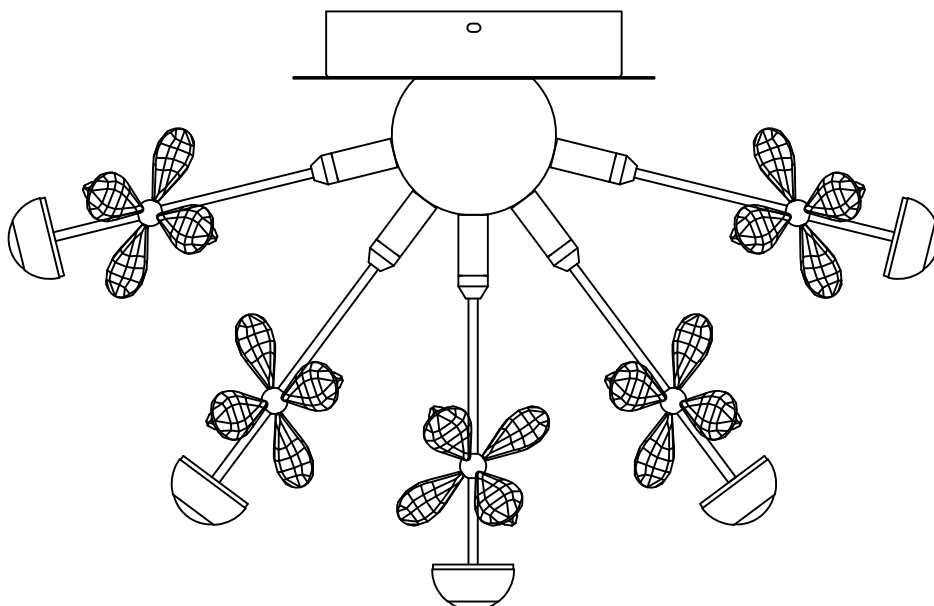




Contemporary  
Lighting™

PRODUCT NAME: Nova LED Flush Mount  
ITEM NUMBER: E24791-20PC

Please consult your electrician for hanging fixture and wiring.



The fixture is designed to dim with a standard Triac forward phase dimmer. Dimming levels will vary by dimmer.

Below is a list of recommended dimmers:

Lutron MACL-153M

Lutron DVCL-153P

Lutron SCL-153P

Leviton IPL06-10Z

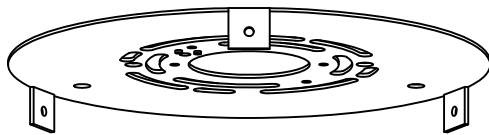
Leviton 6674-POW

Due to inrush current wattage should not exceed 150 watts of product for a 600 watt dimmer.

Warning! Wires need to be connected to driver found in canopy and should not be connected directly to power source or a short may occur.

Bulb(integrated): LED 38.4W

IMPORTANT: Turn off the power at the main fuse or circuit breaker box before starting installation



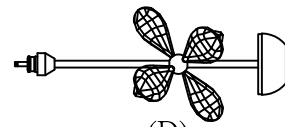
(A)  
Mounting Bracket



(B)  
Wire Nut



(C)  
Screw

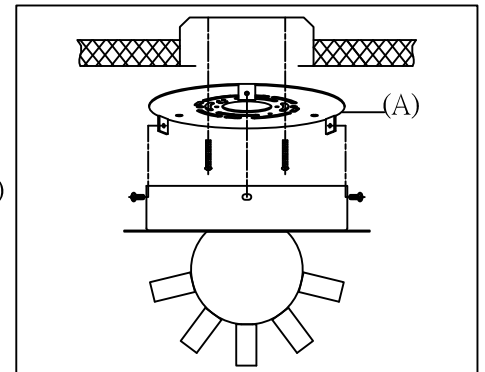
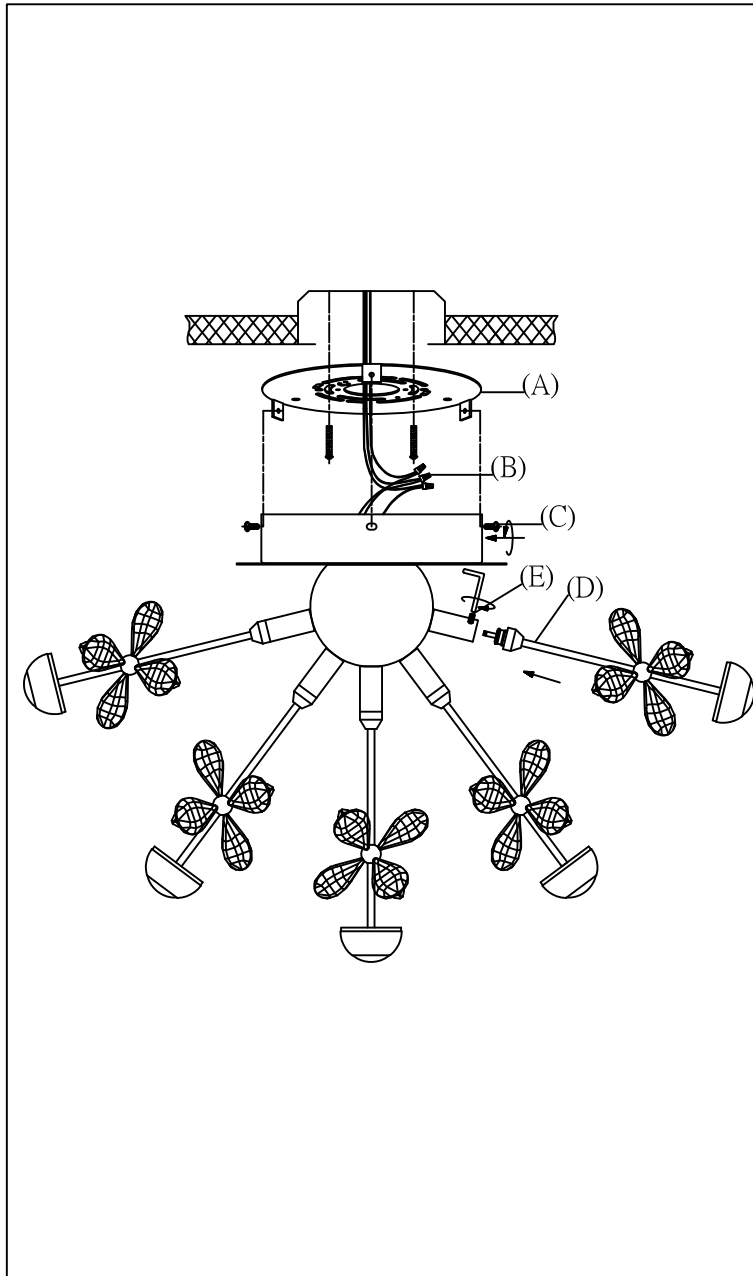


(D)  
LED Light source



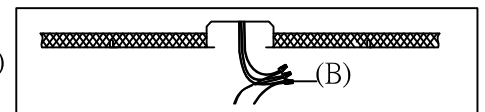
(E)  
Allen Screw

Locate all hardware & components before discarding packaging



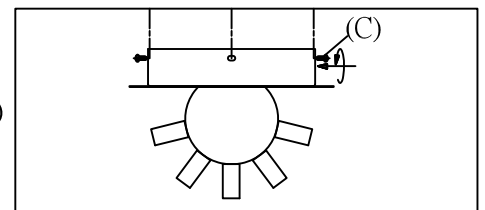
1.)

Step.1: Remove mounting bracket (A) from fixture and install to electrical box.



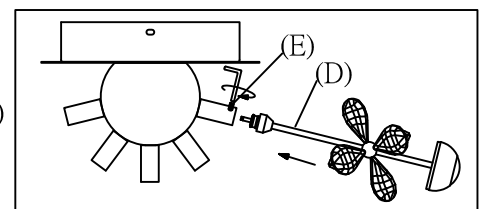
2.)

Step.2: Wire fixture to wires (B) in outlet box. Copper wire is for Ground.



3.)

Step.3: Install lamp body to back plate using two screws (C) on side to secure.



4.)

Step.4: Insert the LED light source (D) into the metal part and secure using Allen Screw (F)

### Cleaning & Care:

Clean with soft cloth and a mild detergent.  
Do not use abrasive cleaner.