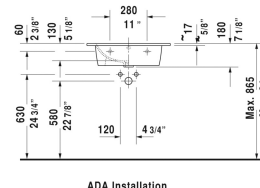
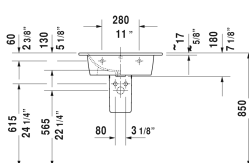
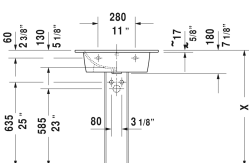
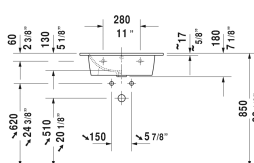
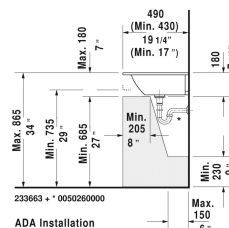
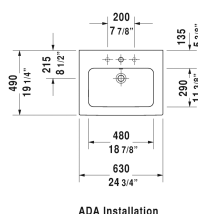
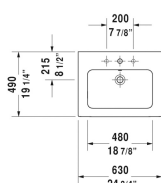


ME by Starck Furniture washbasin # 2336630000 /
23366300001 / 2336630030 / 23366300301 / 2336630060 /
23366300601

| < 24 3/4" Inch > |



Furniture washbasin	Dimension	Weight	Order number
with overflow, with tap platform, hardware included, wall-mounted, 24 3/4" Inch			
Colors			
00 White			
Variant			
●	24 3/4" x 19 1/4" Inch	43 lb	2336630000
●	24 3/4" x 19 1/4" Inch	43 lb	23366300001
● ● ●	24 3/4" x 19 1/4" Inch	43 lb	2336630030
● ● ●	24 3/4" x 19 1/4" Inch	43 lb	23366300301
☒	24 3/4" x 19 1/4" Inch	43 lb	2336630060
☒	24 3/4" x 19 1/4" Inch	43 lb	23366300601
Infobox			
Washbasin is not ADA compliant in combination with pedestal, siphon cover or metal console			
Space-saving siphon	1 1/4" Inch	0.9 lb	005076
Suitable products			
Vanity unit wall-mounted 1 pull-out compartment, for ME by Starck # 233663, 24 3/8" x 19" Inch	24 3/8" x 19" Inch		LC6140
Vanity unit wall-mounted 2 drawers, upper drawer including cut-out for siphon and siphon cover, for ME by Starck # 233663, 24 3/8" x 19" Inch	24 3/8" x 19" Inch		LC6240

ME by Starck Furniture washbasin # 2336630000 /
23366300001 / 2336630030 / 23366300301 / 2336630060 /
23366300601

|< 24 3/4" Inch >|

Vanity unit floorstanding 2 pull-out compartments, upper drawer including cut-out for siphon and siphon cover, for ME by Starck # 233663, 24 3/8" x 19" Inch	24 3/8" x 19" Inch	LC6625
Vanity unit floorstanding 2 pull-out compartments, upper drawer including cut-out for siphon and siphon cover, plinth panel with integrated plinth leg (adjustable), for ME by Starck # 233663, 24 3/8" x 19" Inch	24 3/8" x 19" Inch	LC6680
Pedestal for # 233565, 233560, 233555, 233613, 233612, 233610, 233683, 233663, 6 7/8" x 8 1/4" Inch	6 7/8" x 8 1/4" Inch	085839
Siphon cover for # 233565, 233560, 233555, 233613, 233612, 233610, 233683, 233663, 6 3/4" x 11 3/4" Inch	6 3/4" x 11 3/4" Inch	085840

All drawings contain the necessary measurements which are subject to standard tolerances. They are stated in inch & mm and are non-binding. Exact measurements, in particular for customized installation scenarios, can only be taken from the finished ceramic piece.