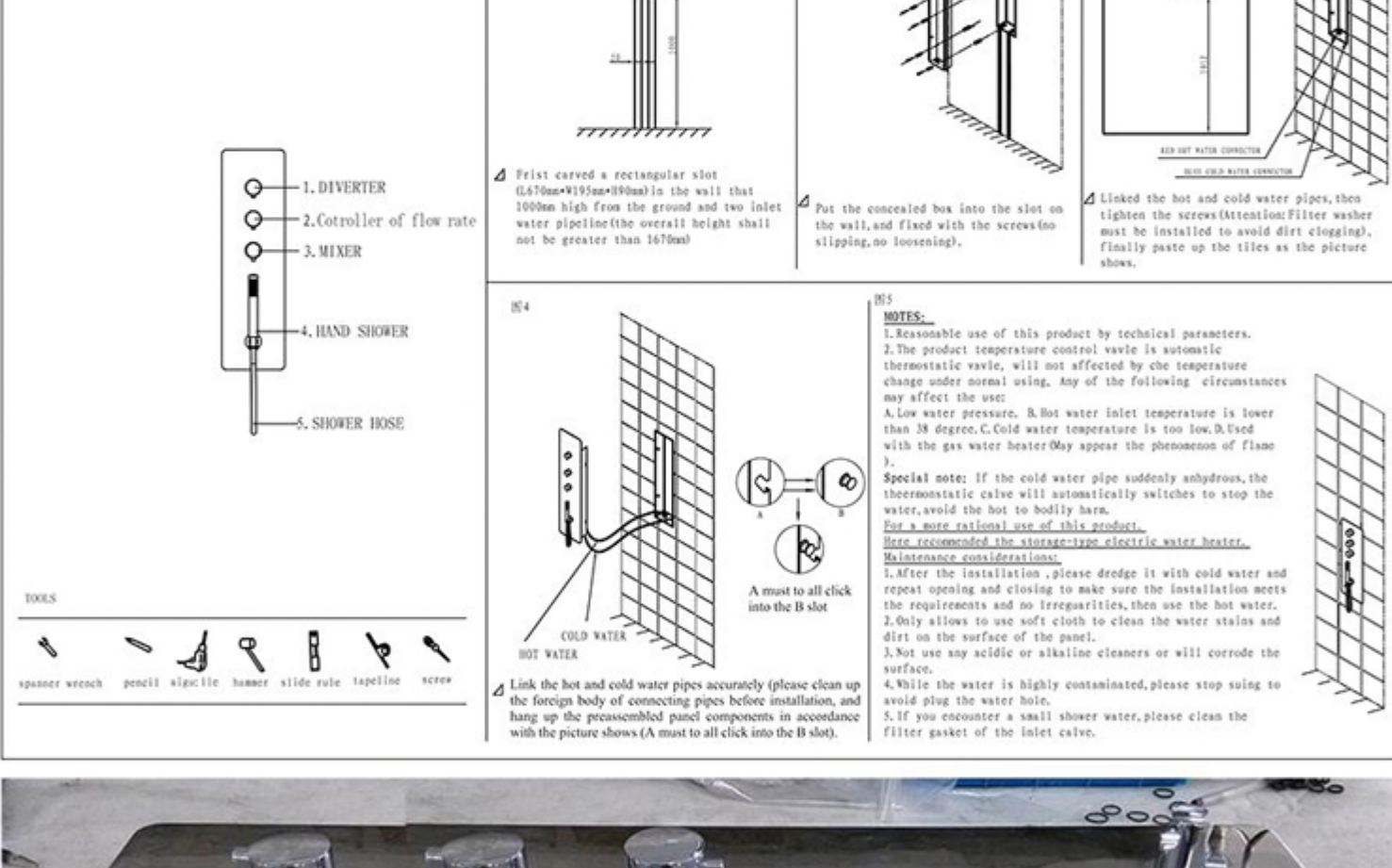
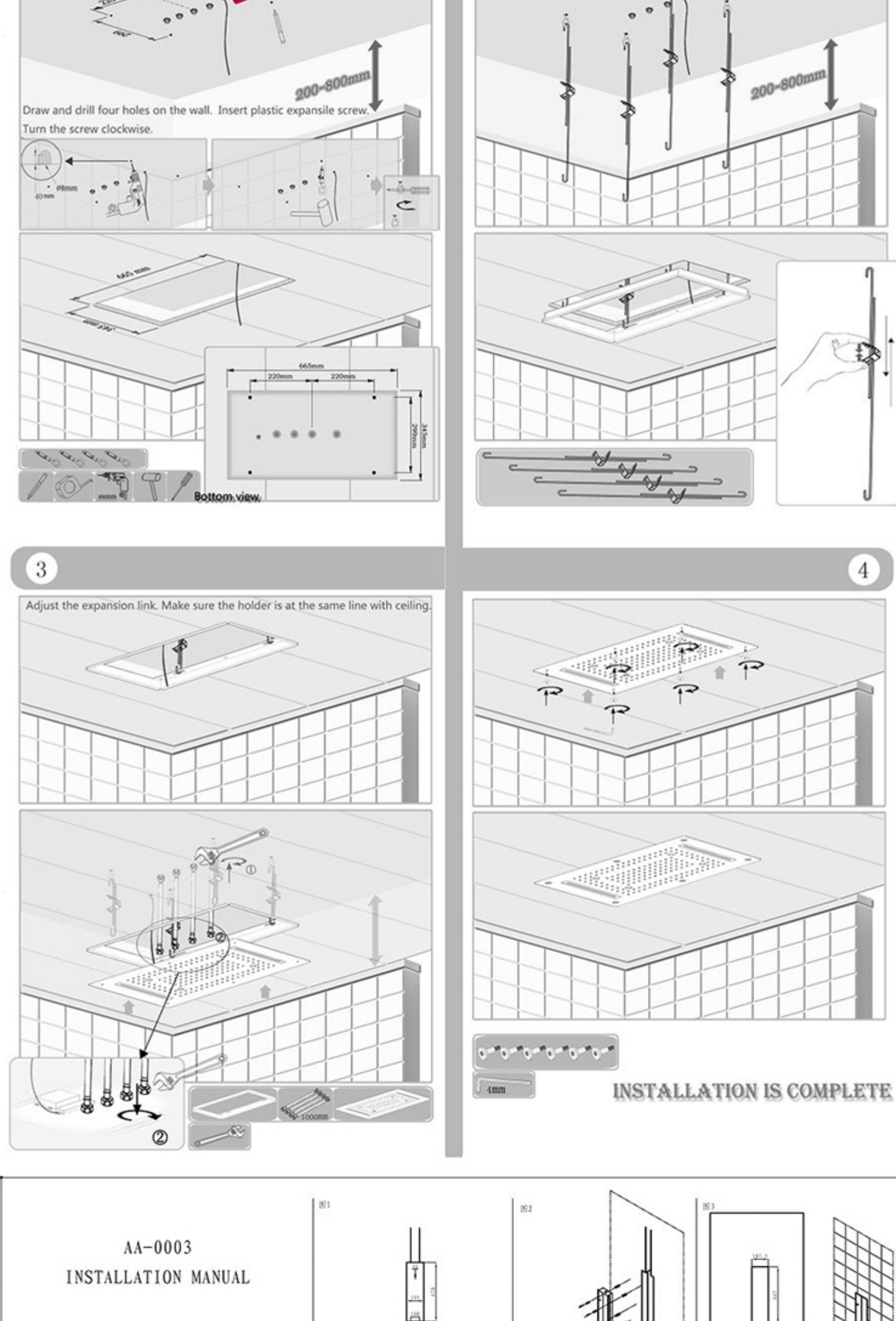
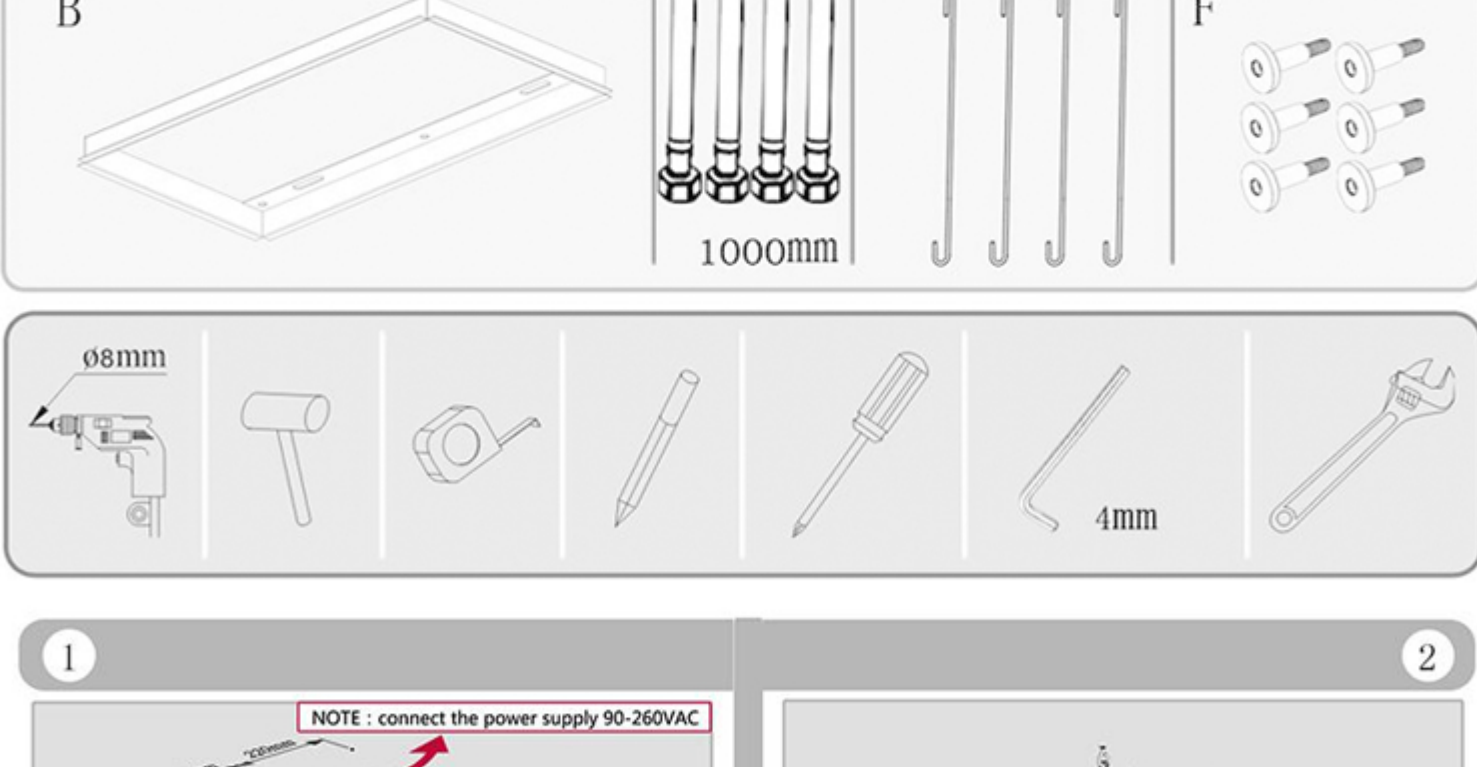


[illegible]

concealed box, to save much more space



Connectors or Outlet

A close-up photograph of a horizontal metal beam. A hole is visible in the beam, and a cable or hose is connected to it. The beam has some surface markings and a small label.

Inside of concealed box , it's so easy to repair , just take out the front of plate

This General diagram and installation instructions are not intended for any specific model, but is presented as a general guideline for Installations!