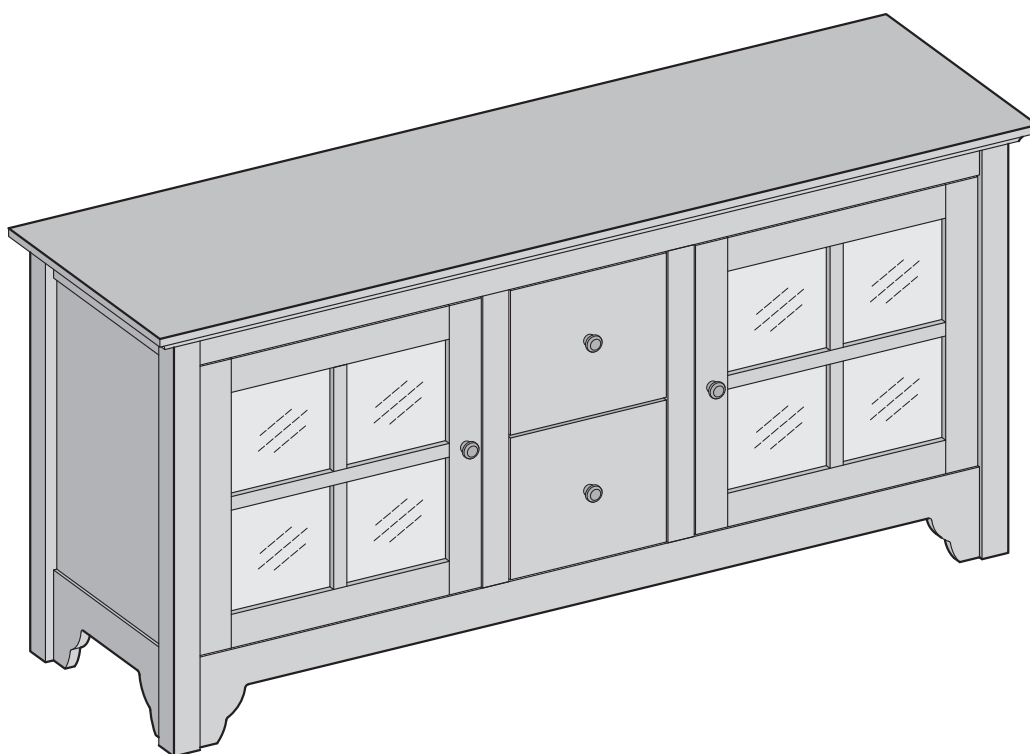




ITEM # : W52C2DW
Assembly Instructions

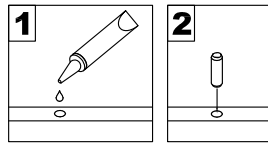


*Please visit our website for the most current instructions, assembly tips, report damage, or request parts. **www.walkeredison.com***

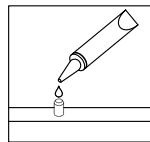
Revised 03/2017

General Assembly Guidelines

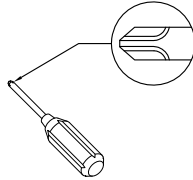
- I. Ensure that all parts and hardware are available before beginning assembly.
- II. Follow each step carefully to ensure the proper assembly of this product.
- III. Two people are recommended for ease in the assembly of this product.
- IV. The three main types of hardware used to assemble this product are : wood dowels , screws and bolts.
- V. The provided glue is to secure wood dowels in place . When first inserting dowels , locate the appropriate hole for the dowel , place a small amount of glue in the hole and insert the dowel . Wipe away excess glue immediately.



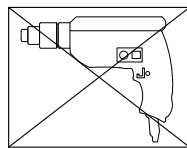
In future assembly steps when dowels are necessary to attach assembly parts together , place a small amount of glue on the end of the dowel before attaching parts together . Wipe away excess glue immediately.



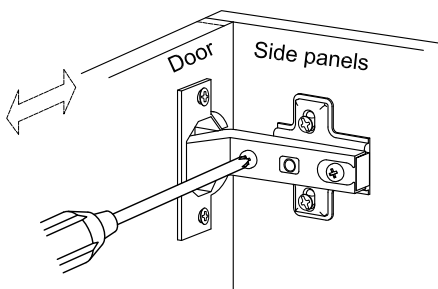
- VI. A Phillips head screwdriver is required for the assembly of this product .



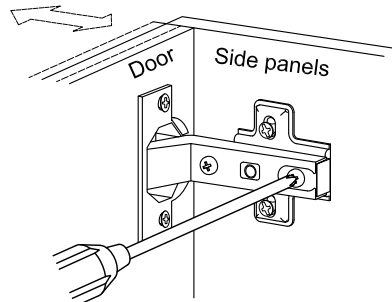
- VII. Power tools should not be used to assemble this product .



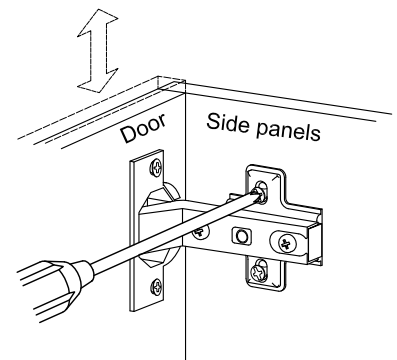
- VIII. Concealed hinges are three-way adjustable.



Horizontal
by screw adjustment

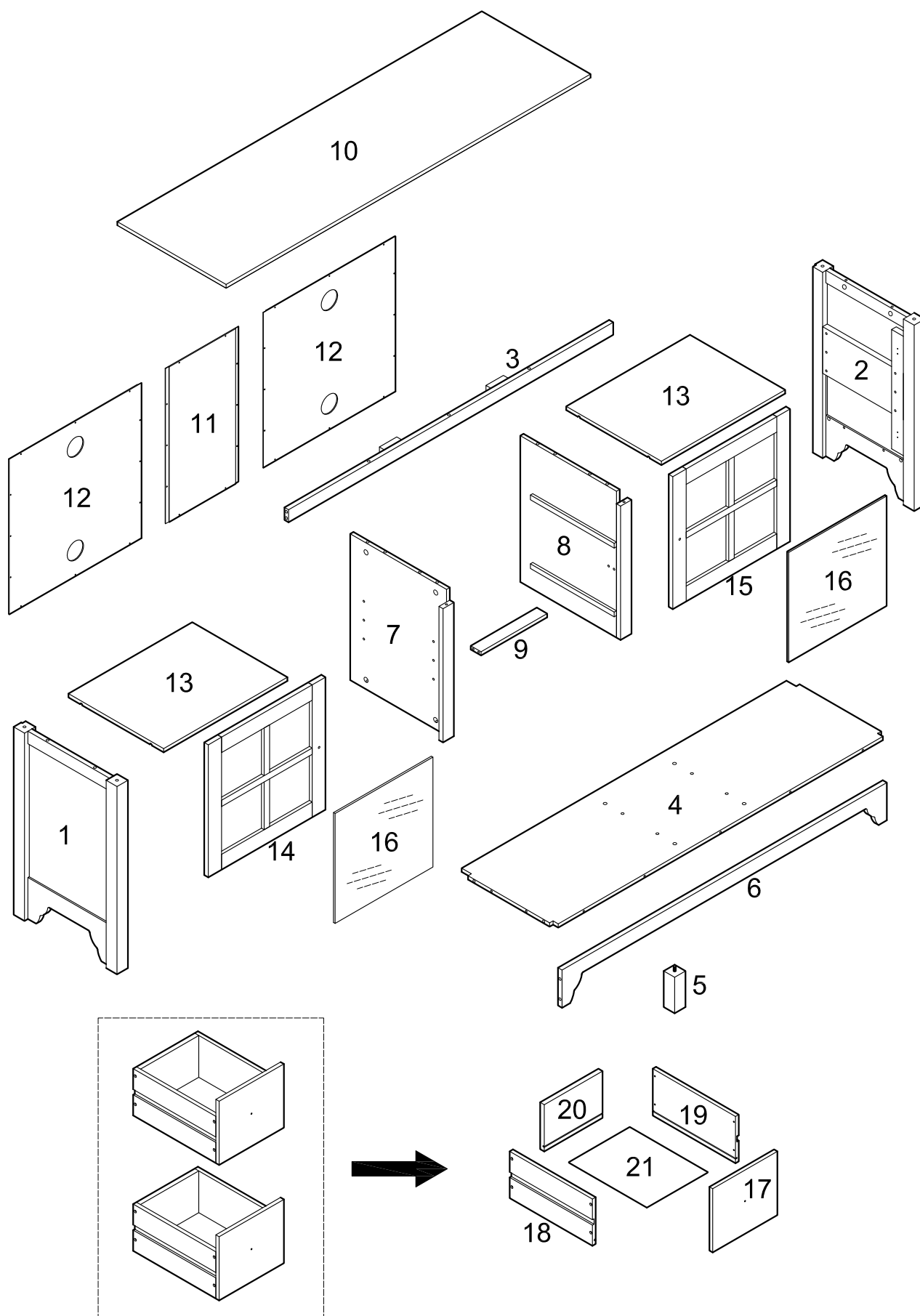


In-and-Out
by loosening the hinge-arm
mounting screw or via cam
adjustment

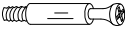
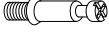


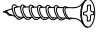


Vertical
Via slots in the mounting
plate or via cam adjustment

Parts List

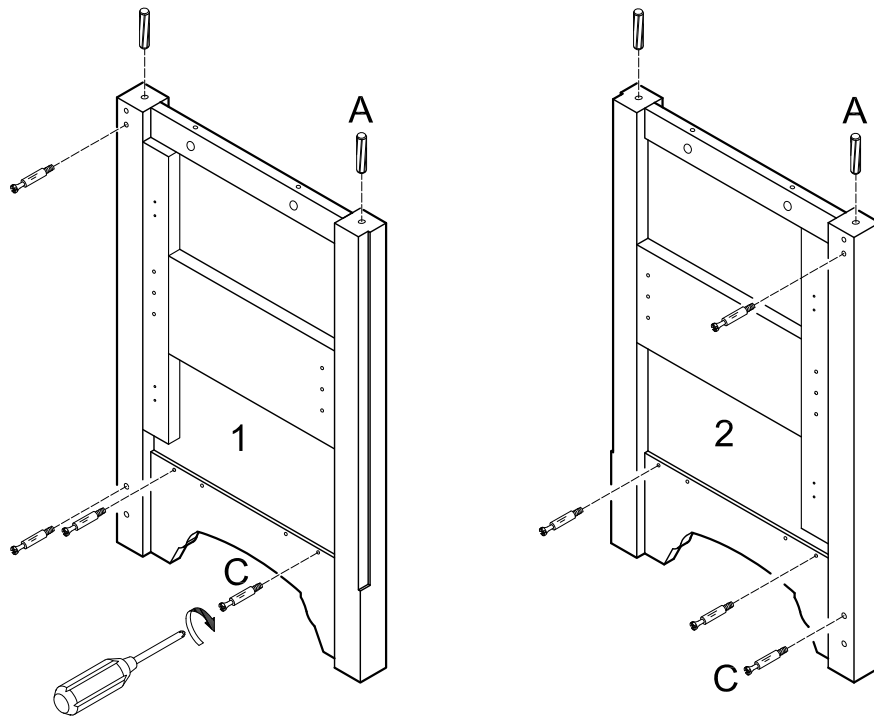


Hardware List

A		Ø8x30	Large wooden dowel	10 pcs
B		Ø6x30	Small wooden dowel	20 pcs
C		Ø6x32	Cam bolt	21 pcs
D		Ø8x30mm	Cam bolt	3 pcs
E		Ø15x9.5	Cam lock	24 pcs
F		Ø7x2.5x12	Screw	28 pcs
G		Ø8x5x16	Shelf support pin	8 pcs
H		Ø24x21	Handel	4 pcs
J		Ø9x5/32"x3/4"	Bolt	4 pcs
K		Ø12x0.5	Metal washer	16 pcs
L			Hinge	4 pcs
M			Shelf stopper	2 pcs
N		Ø6.5x3.5x12	Large screw	16 pcs
P		Ø6x3x12	Medium screw	2 pcs
Q		Ø4x2x8	Small screw	16 pcs
R		Ø8x4x25	Screw	16 pcs
S			Glue tube	1 pc
T			Touch-up marker (Except Black or White)	1 pc

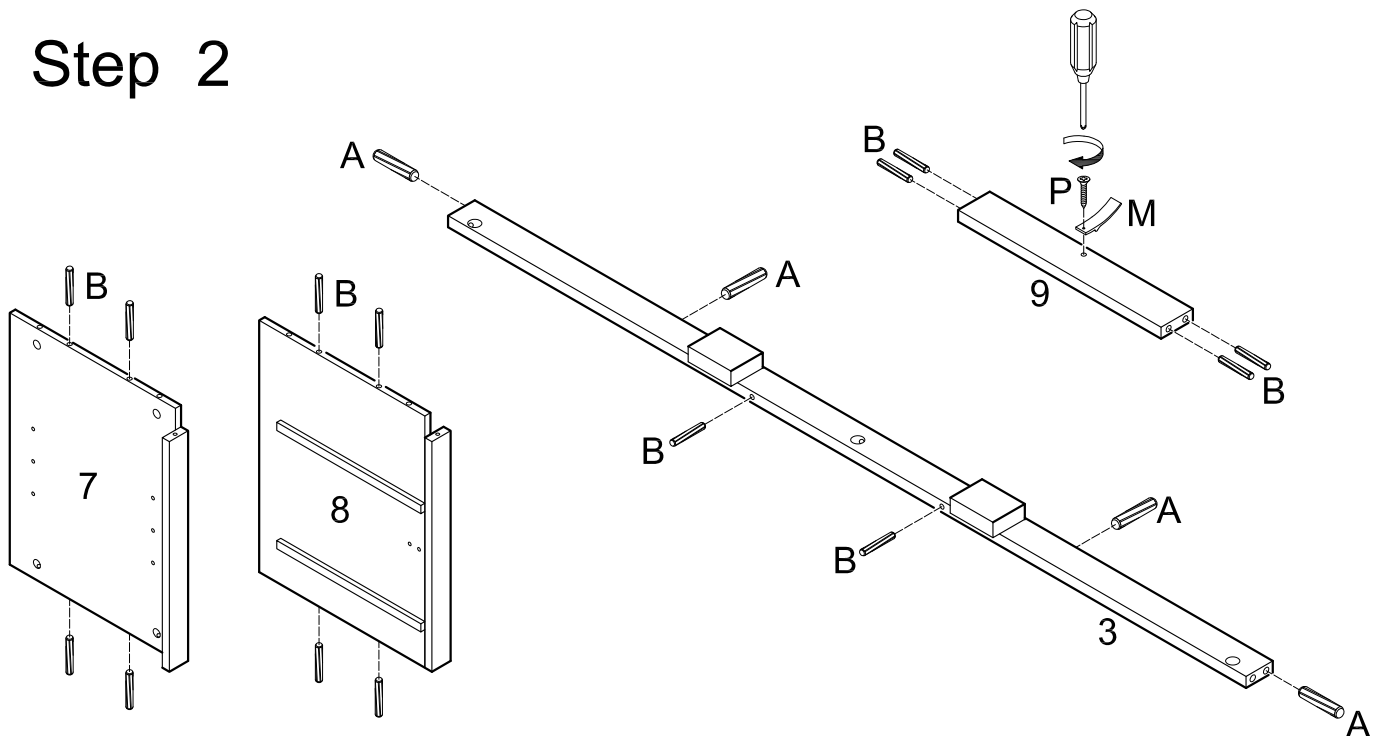
*The hardware quantities listed above are required for proper assembly.
Some extra hardware may also have been included.*

Step 1



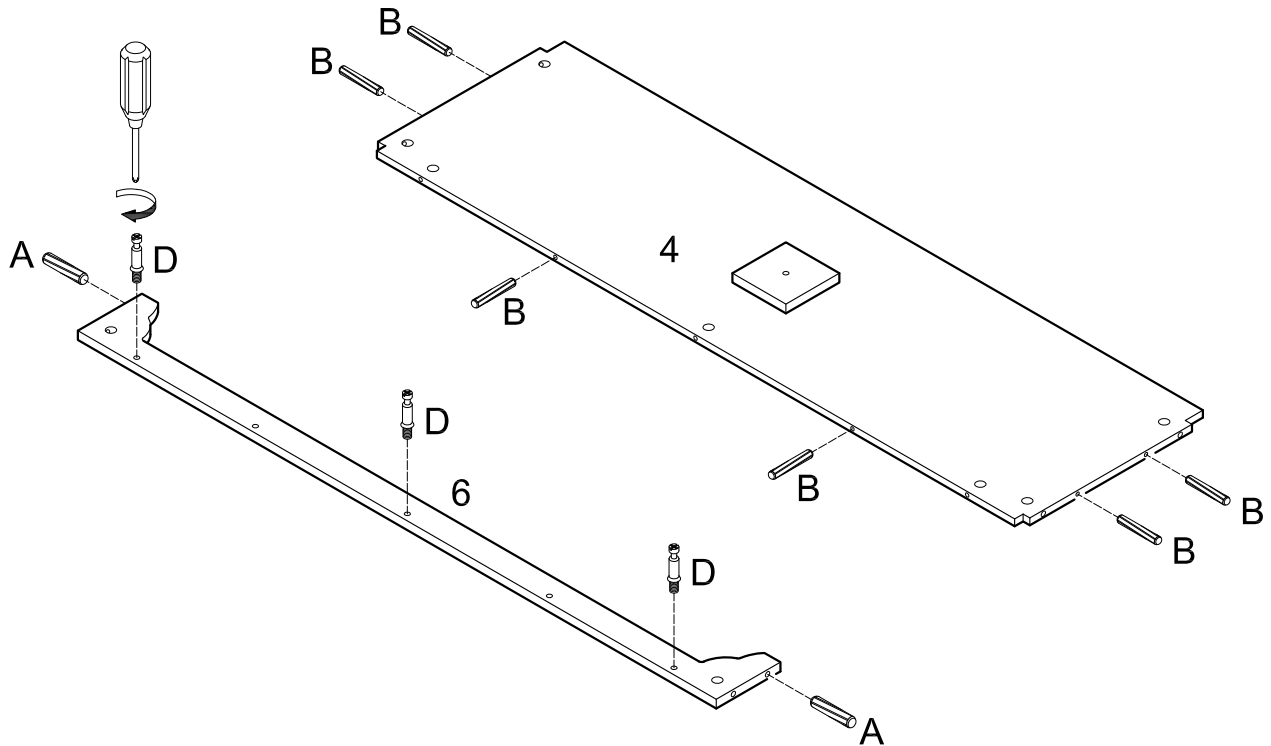
Insert large dowels (A) into panels (1,2). Screw cam bolts (C) into panels (1,2).

Step 2



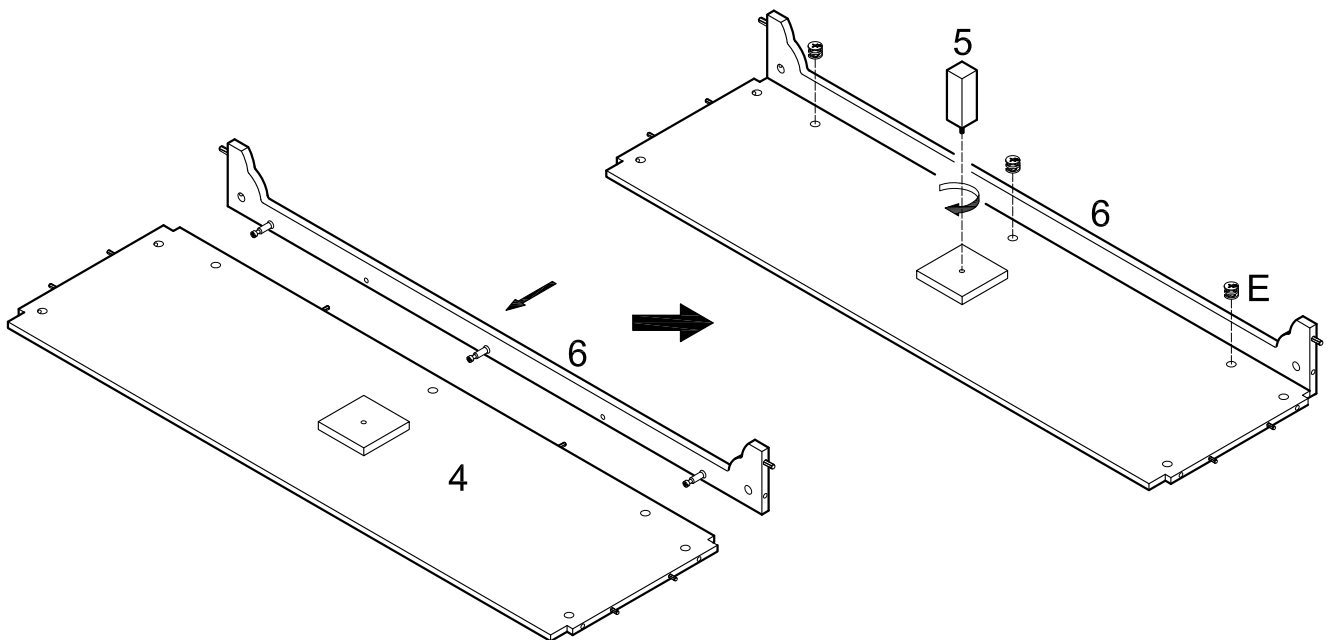
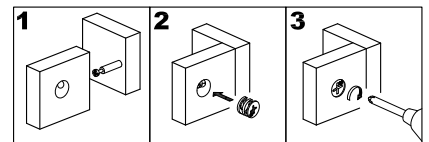
Insert small dowels (B) into panels (7,8) and slats (3,9). Insert large dowels (A) into slat (3). Attach drawer stopper (M) to slat (9) using screw (P)

Step 3



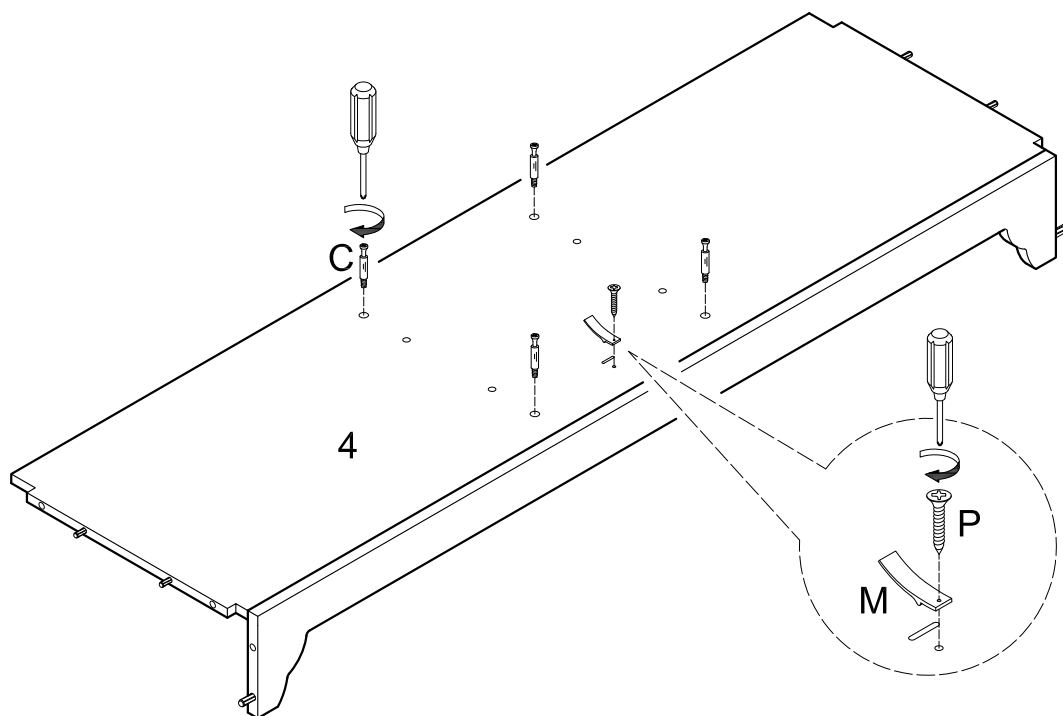
Insert large dowels (A) into slat (6). Screw cam bolts (D) into slat (6). Insert small dowels (B) into panel (4).

Step 4



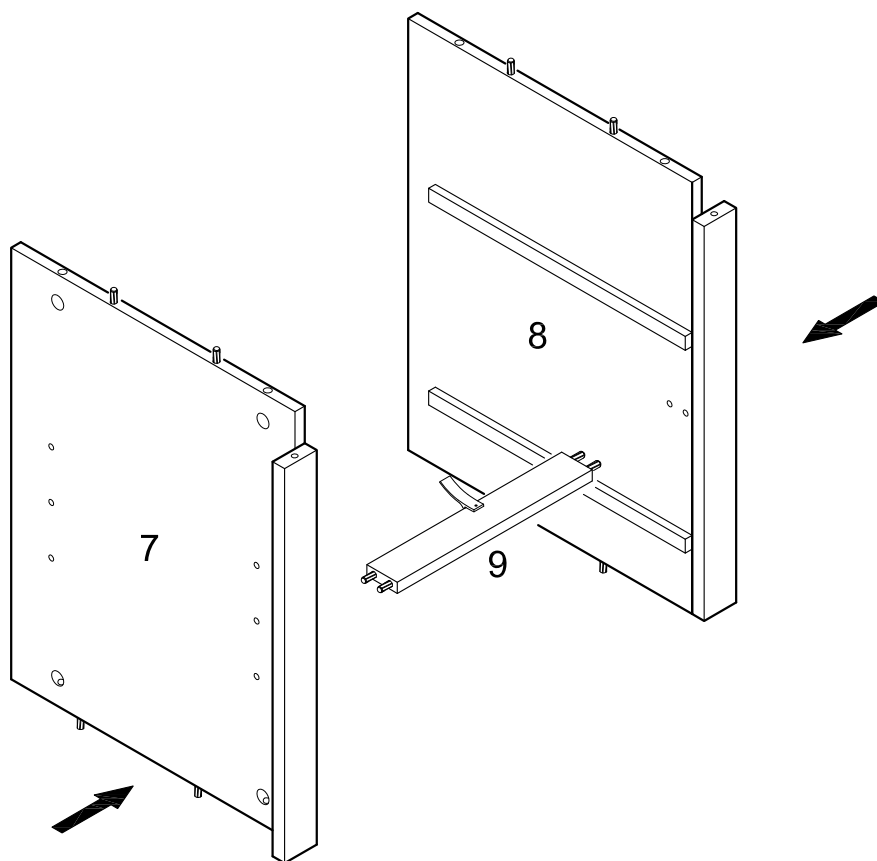
Attach slat (6) to panel (4) using cam bolts and dowels as guides. Insert cam locks (E) into panel (4) and tighten with a screwdriver. Screw leg (5) into panel (4).

Step 5



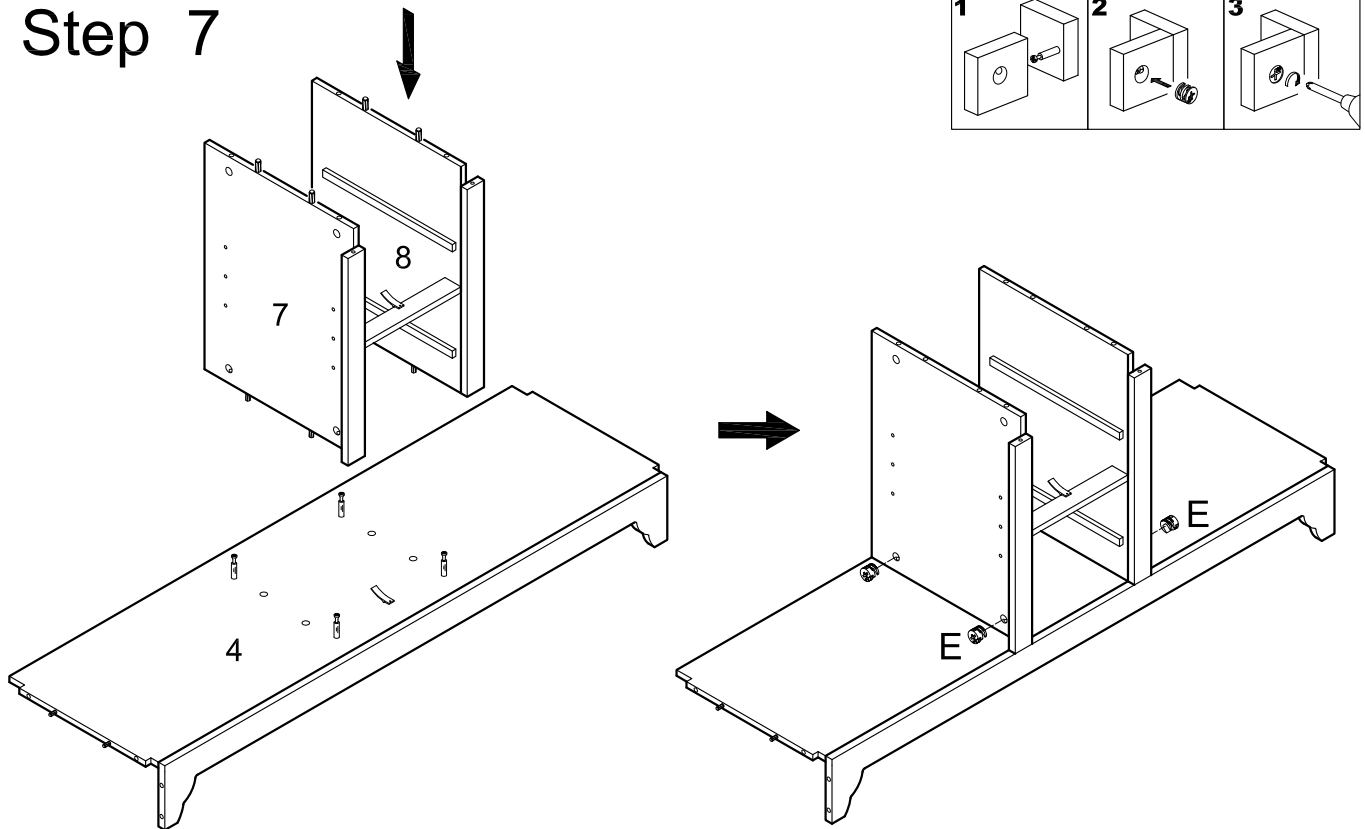
Screw cam bolts (C) into panel (4). Attach drawer stopper (M) to panel (4) using screw (P).

Step 6



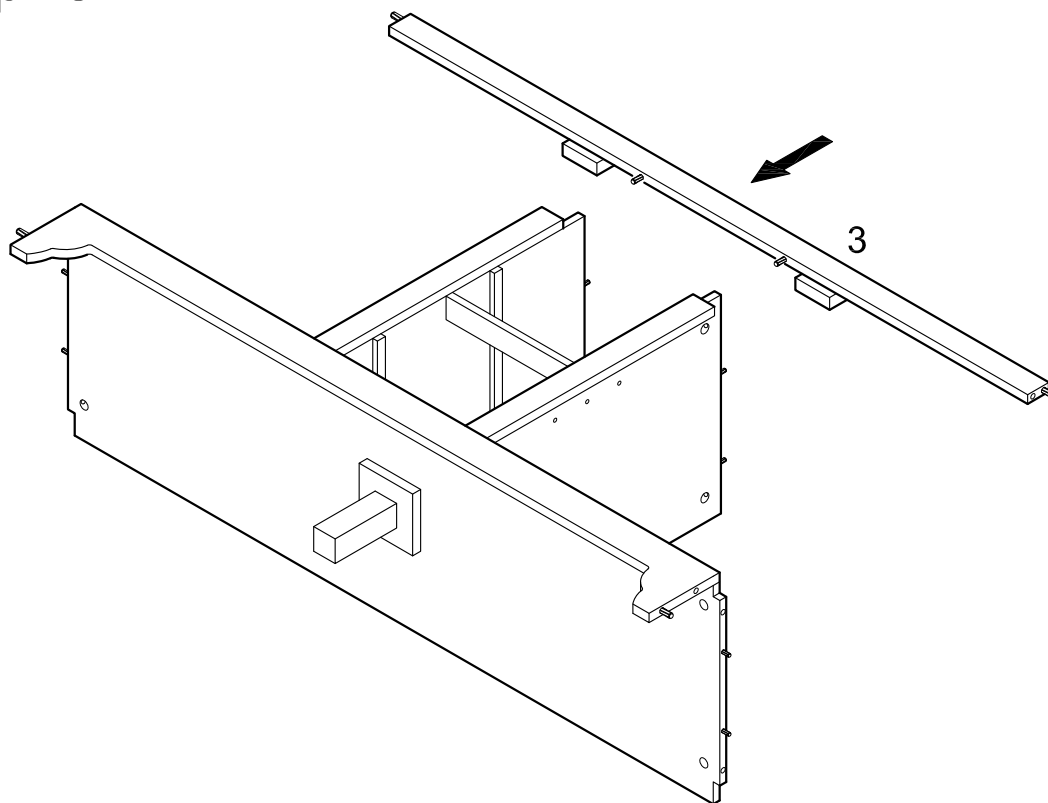
Join panels (7,8) together with slat (9) using dowels as guides.

Step 7



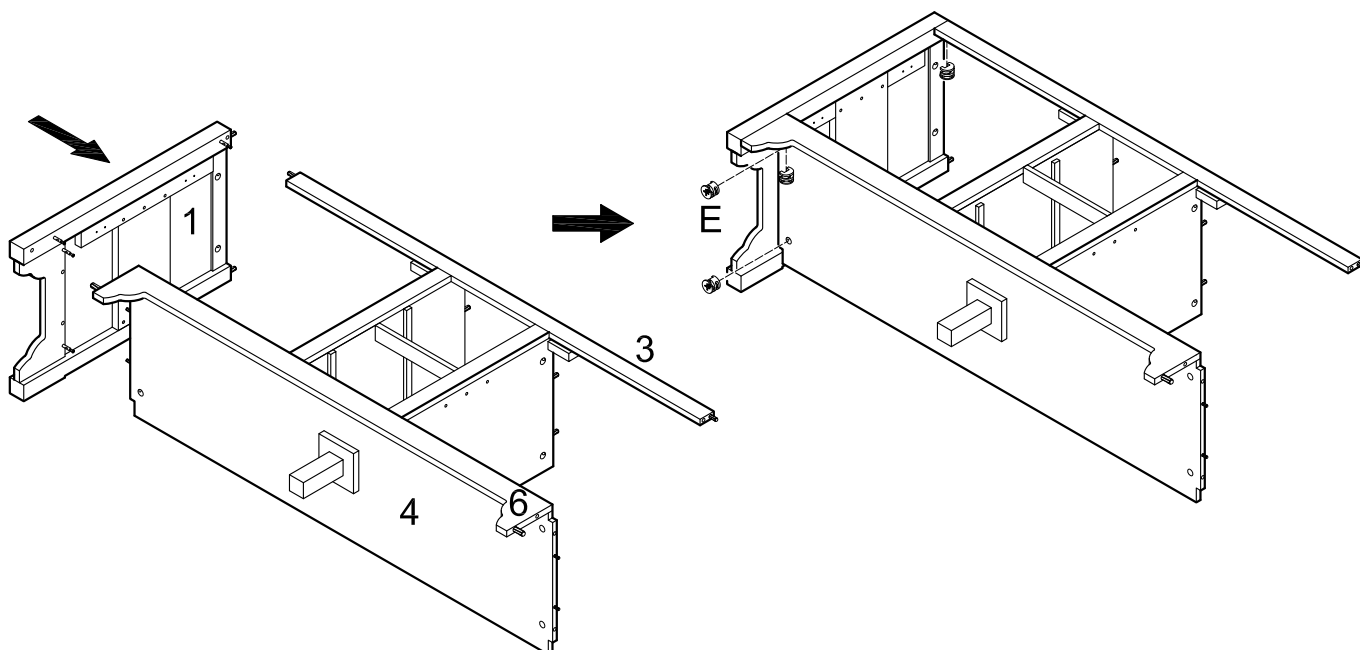
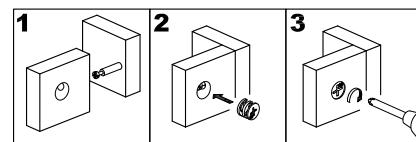
Attach panel assembly (7,8) to panel (4) using cam bolts and dowels as guides. Insert cam locks (E) into panels (7,8) and tighten with a screwdriver. Two cam locks (E) will be inserted into each panel (7,8).

Step 8



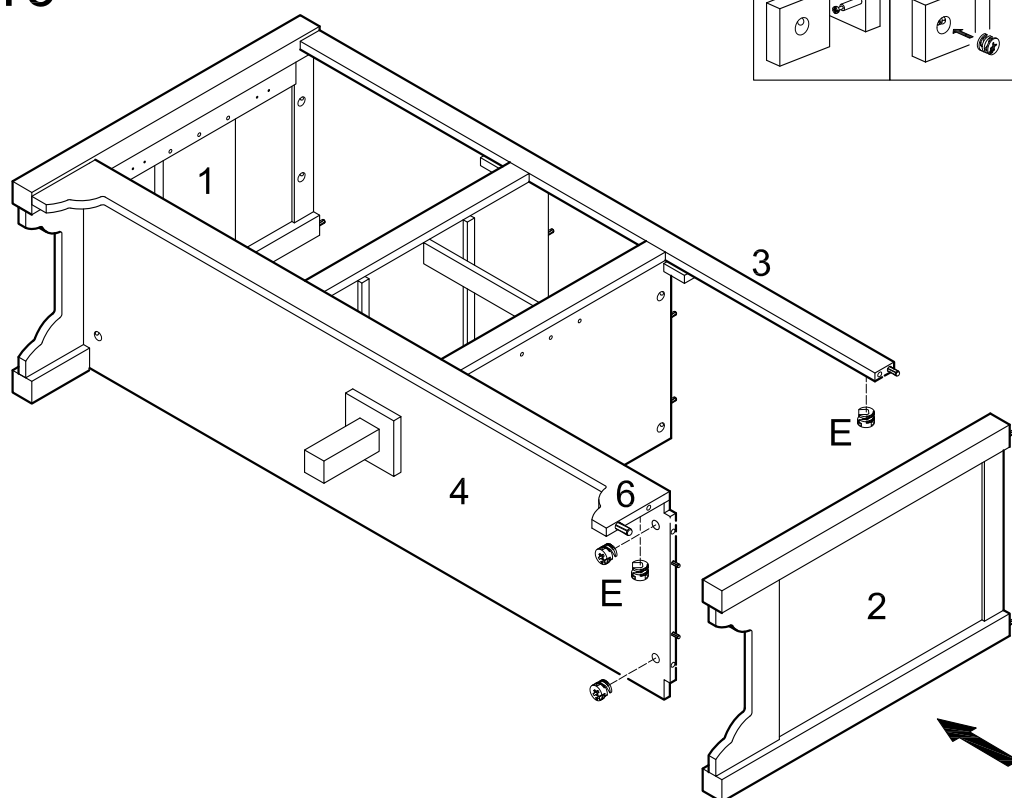
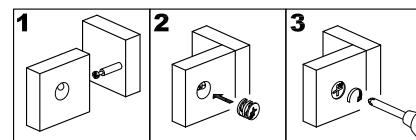
Attach slat (3) to the stand assembly using dowels as guides.

Step 9



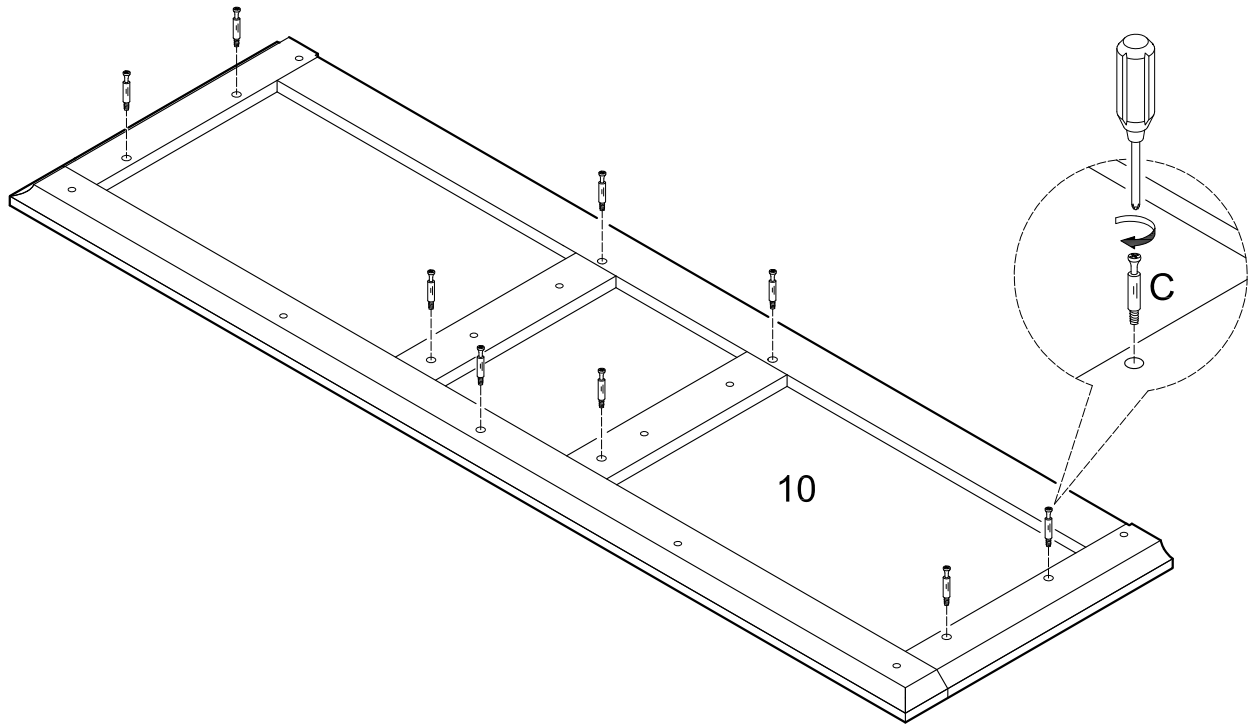
Attach panel (1) to the stand assembly using cam bolts and dowels as guides. Insert cam locks (E) into panel (4) and slats (3,6) and tighten with a screwdriver.

Step 10



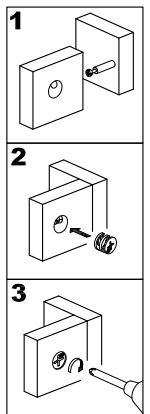
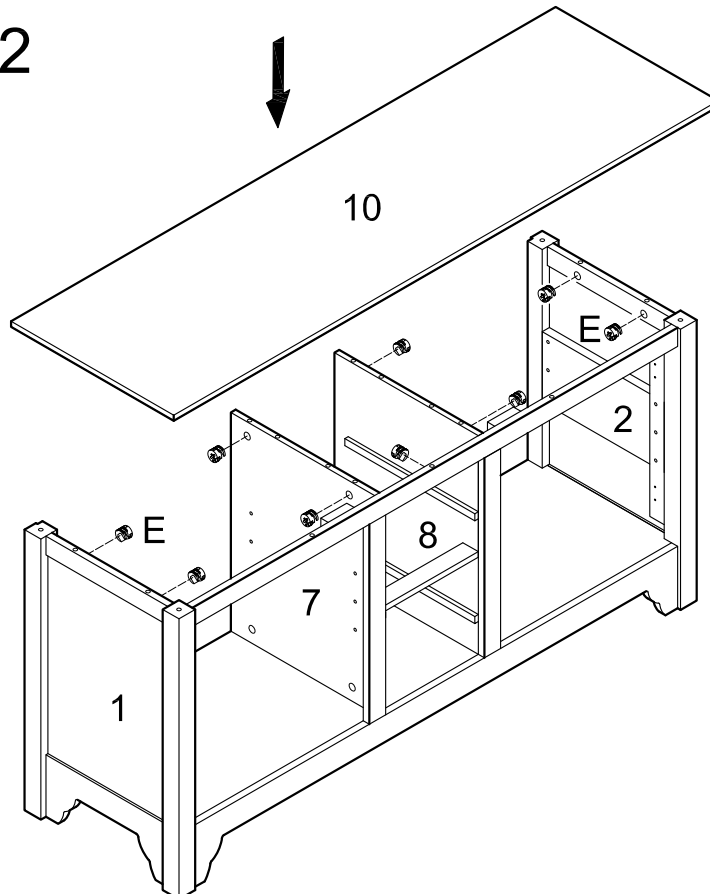
Attach panel (2) to the opposite side of the stand assembly using cam bolts and dowels as guides. Insert cam locks (E) into panel (4) and slats (3,6) and tighten with a screwdriver.

Step 11



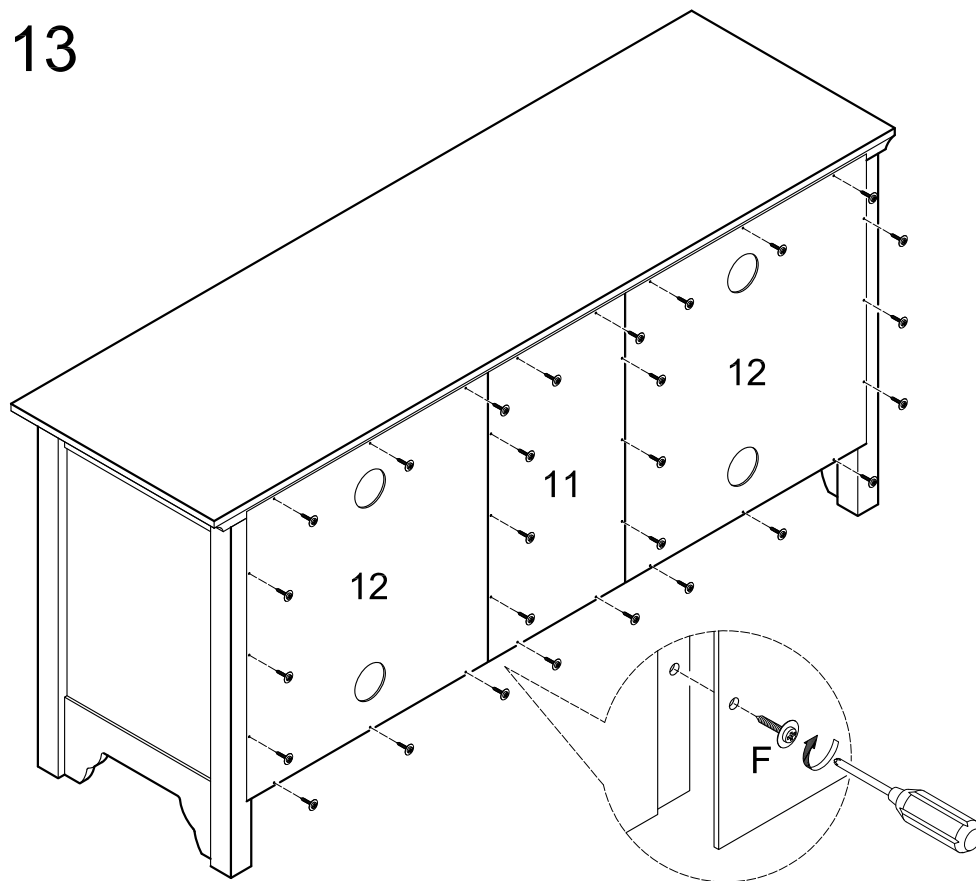
Screw cam bolts (C) into panel (10).

Step 12



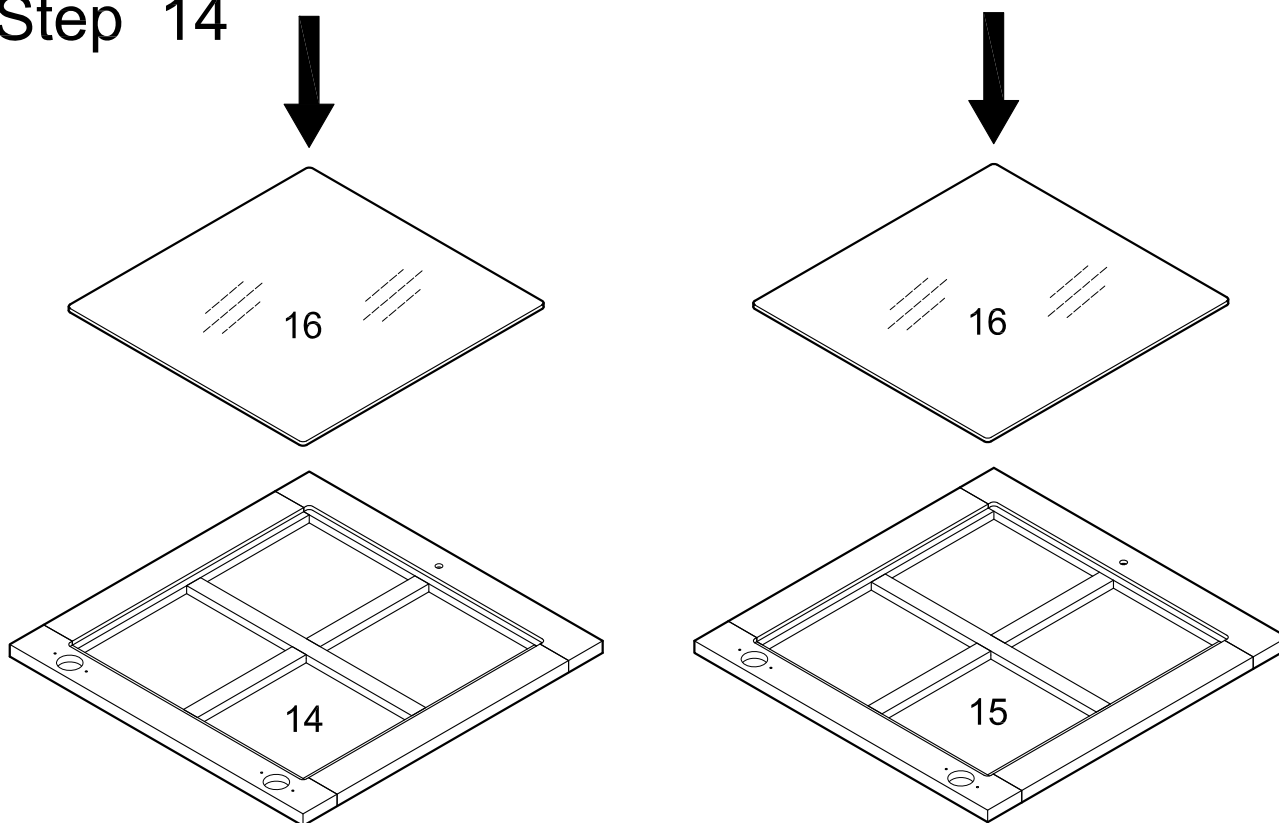
Insert cam locks (E) into the stand assembly as shown above. Attach top panel (10) to the stand assembly using cam bolts and dowels as guides. Tighten cam locks (E) with a screwdriver.

Step 13



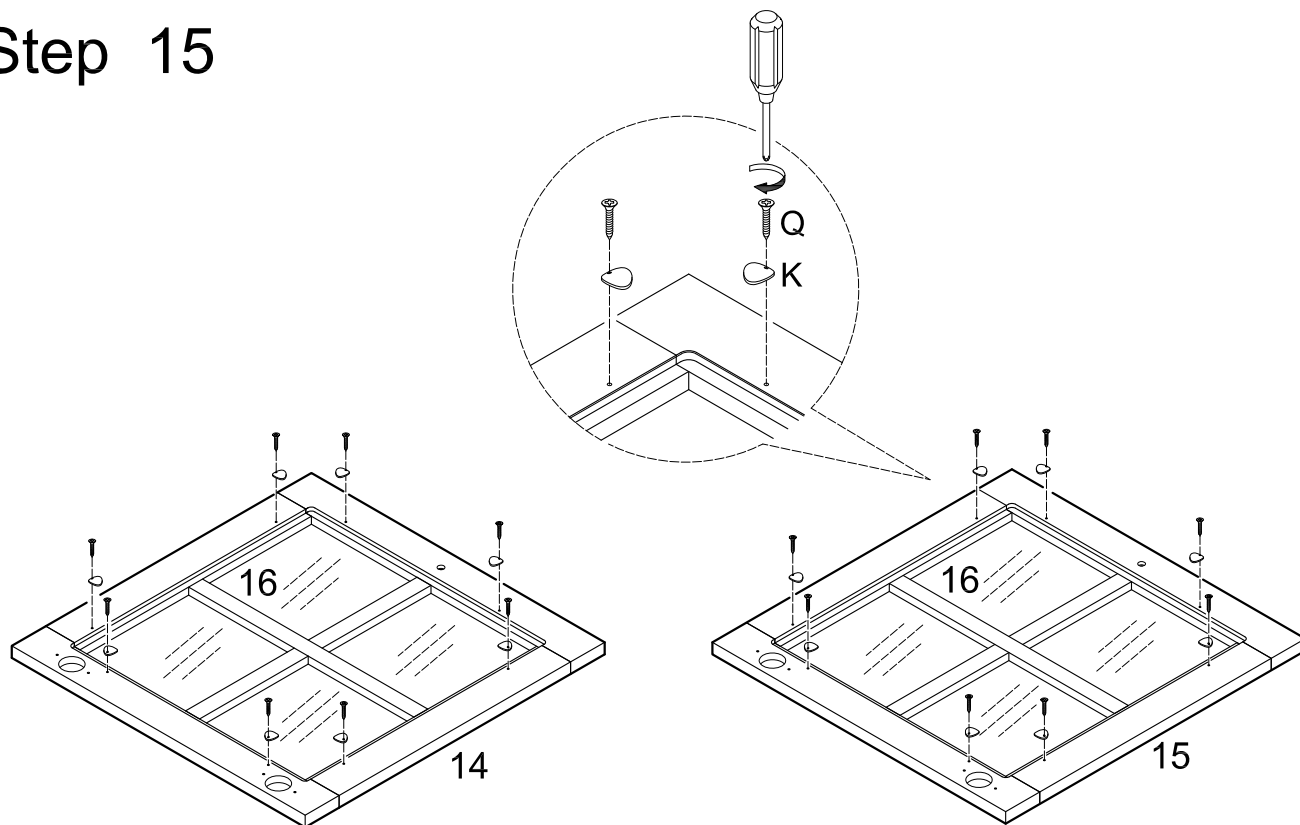
Attach panels (11,12) to the back of the stand assembly using screws (F). Note that panels (12) will overlap panel (11).

Step 14



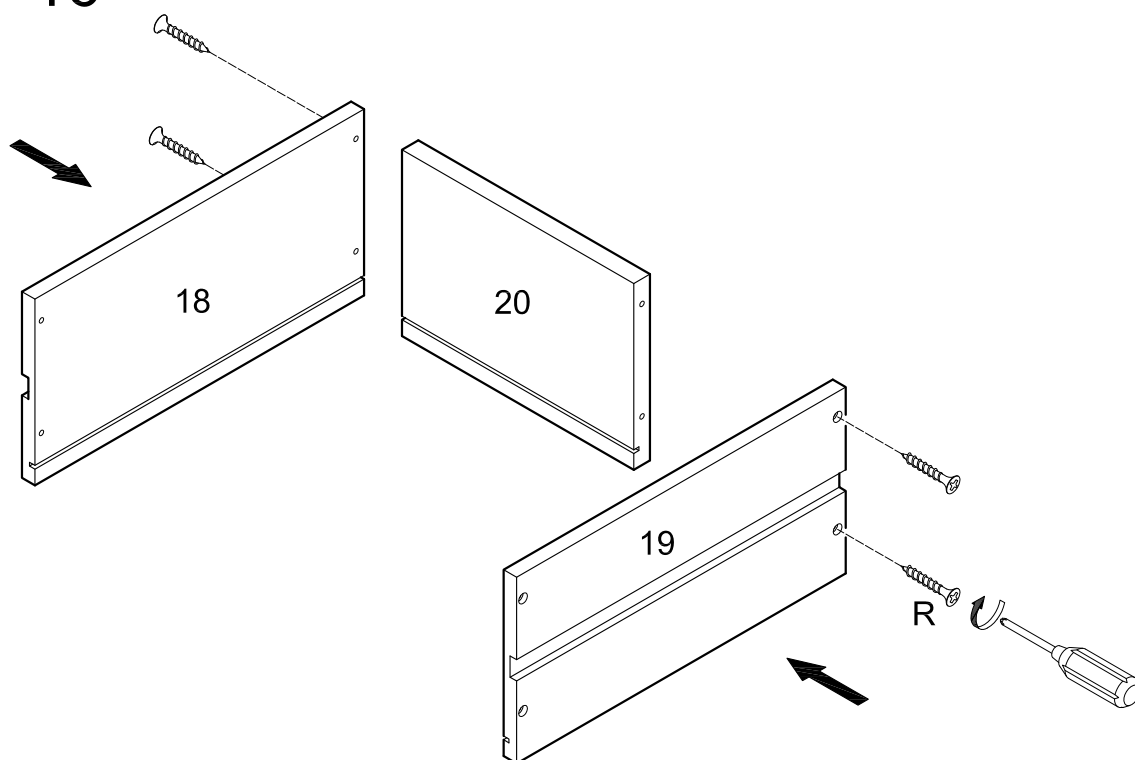
Carefully place glass panes (16) into door frames (14,15).

Step 15



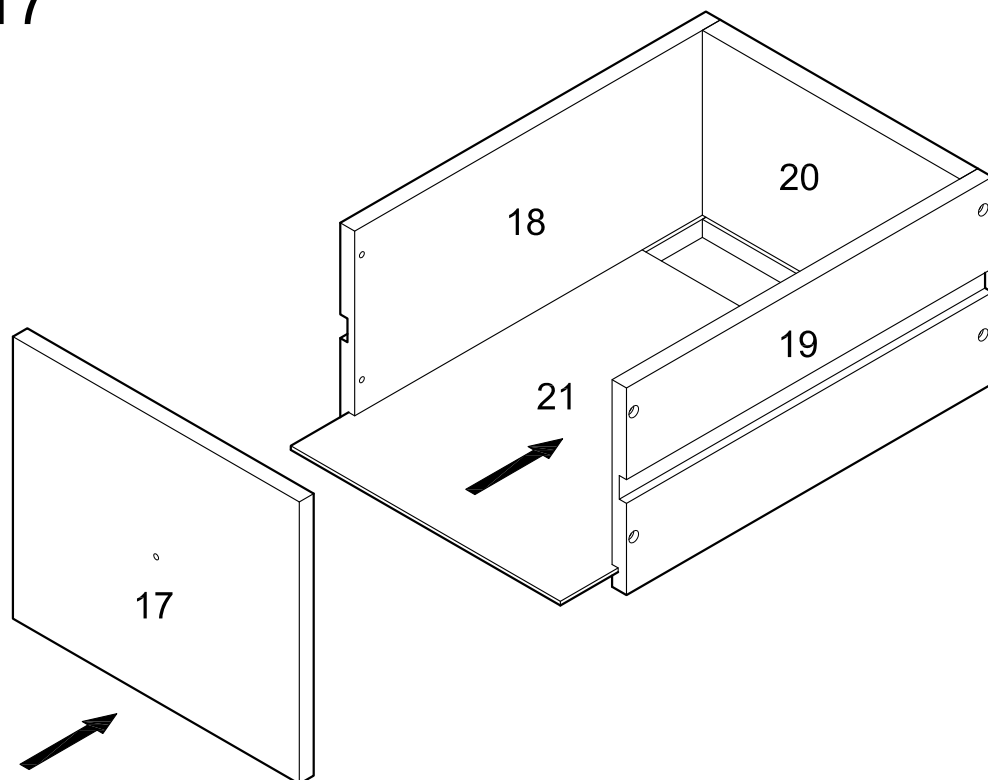
Secure glass panes (16) by attaching metal washers (K) to door frames (14,15) with screws (Q). The curve of metal washers (K) will arc into glass panes (16).

Step 16



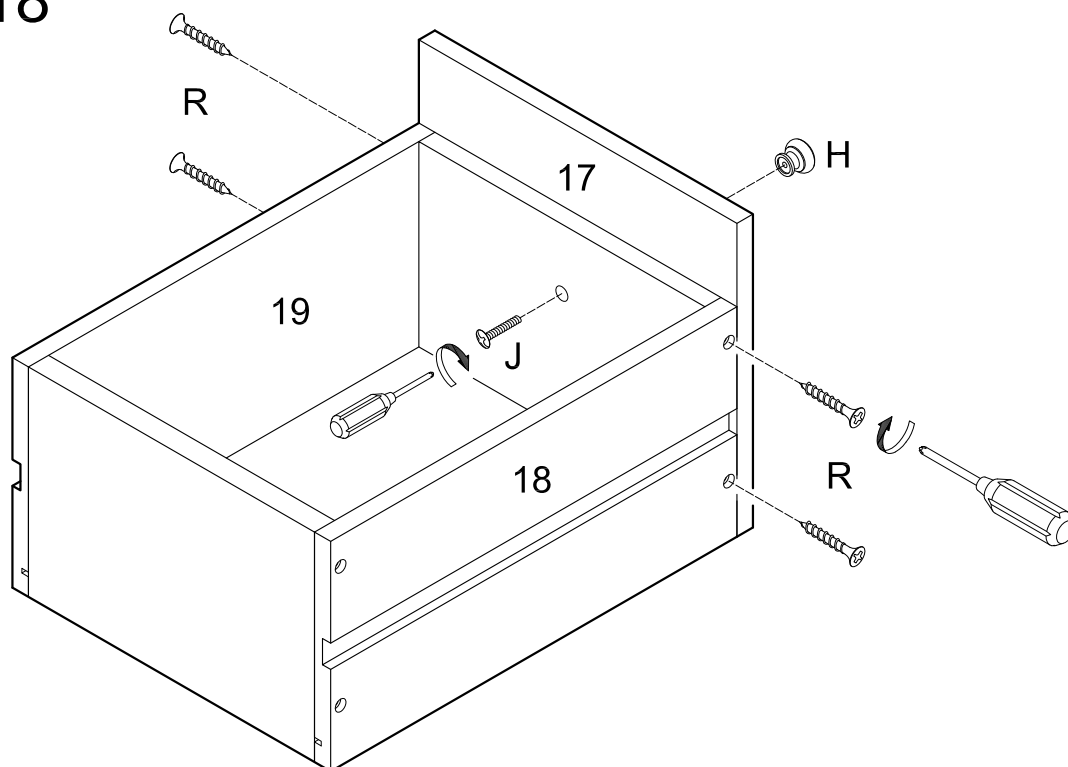
Attach drawer sides (18,19) to drawer back (20) using screws (R). The thin grooves at the base of each drawer piece will align along the interior of the drawer assembly. Repeat this step for the second drawer.

Step 17



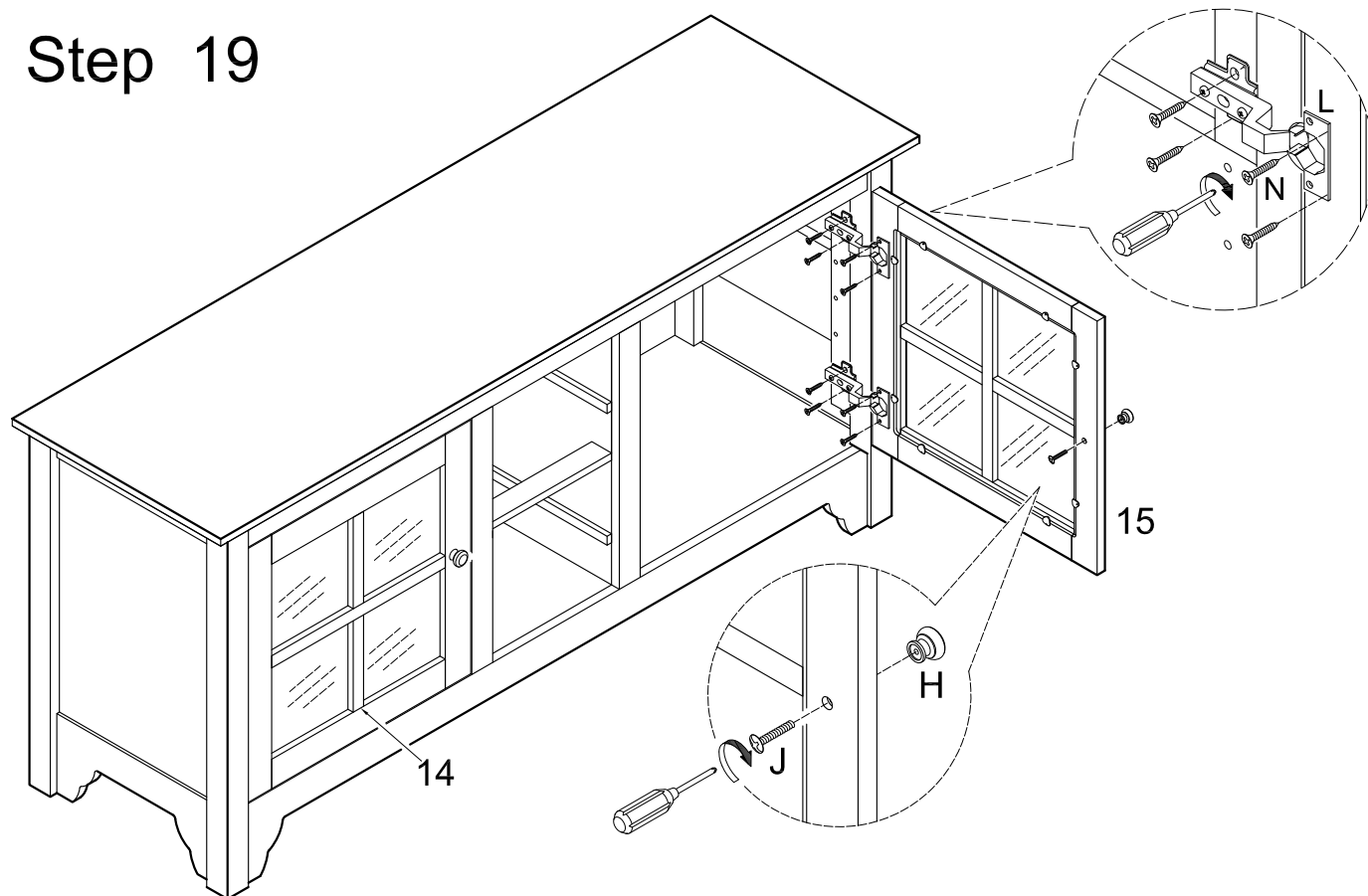
Slide drawer bottom (21) into place along the thin grooves of the drawer assembly. Fit drawer front (17) into place. Repeat this step for the second drawer.

Step 18



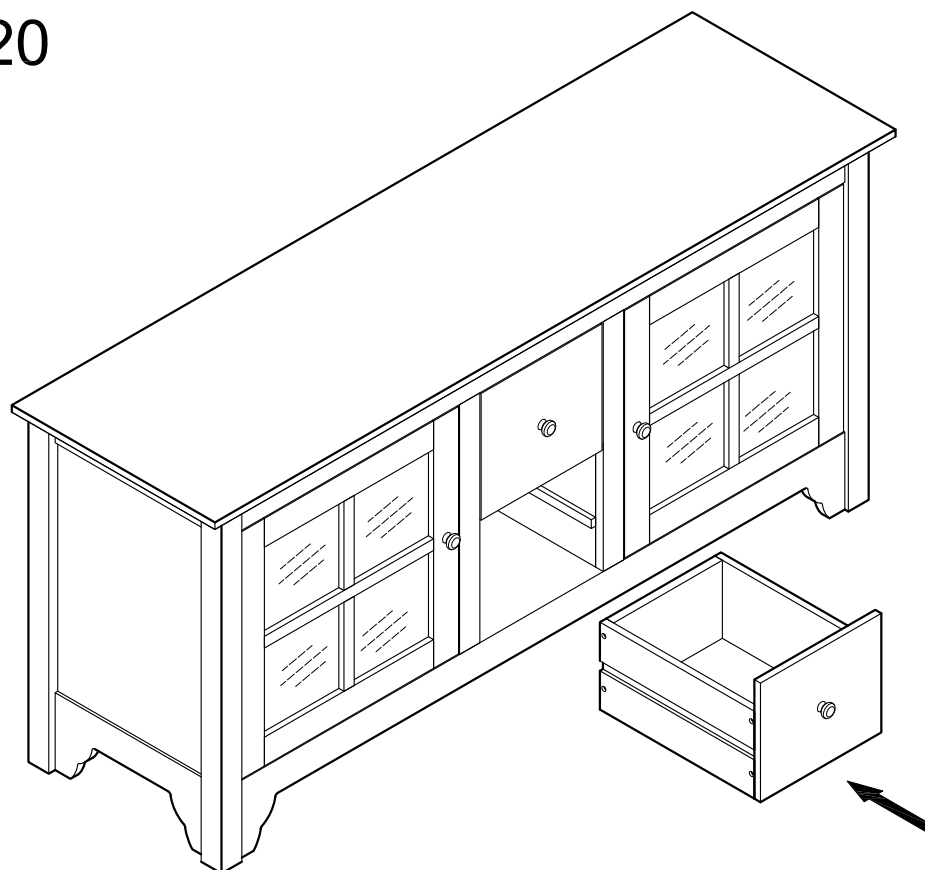
Secure drawer front (17) to the drawer assembly using screws (R). Attach handle (H) to drawer front (17) using bolt (J). Repeat this step for the second drawer.

Step 19



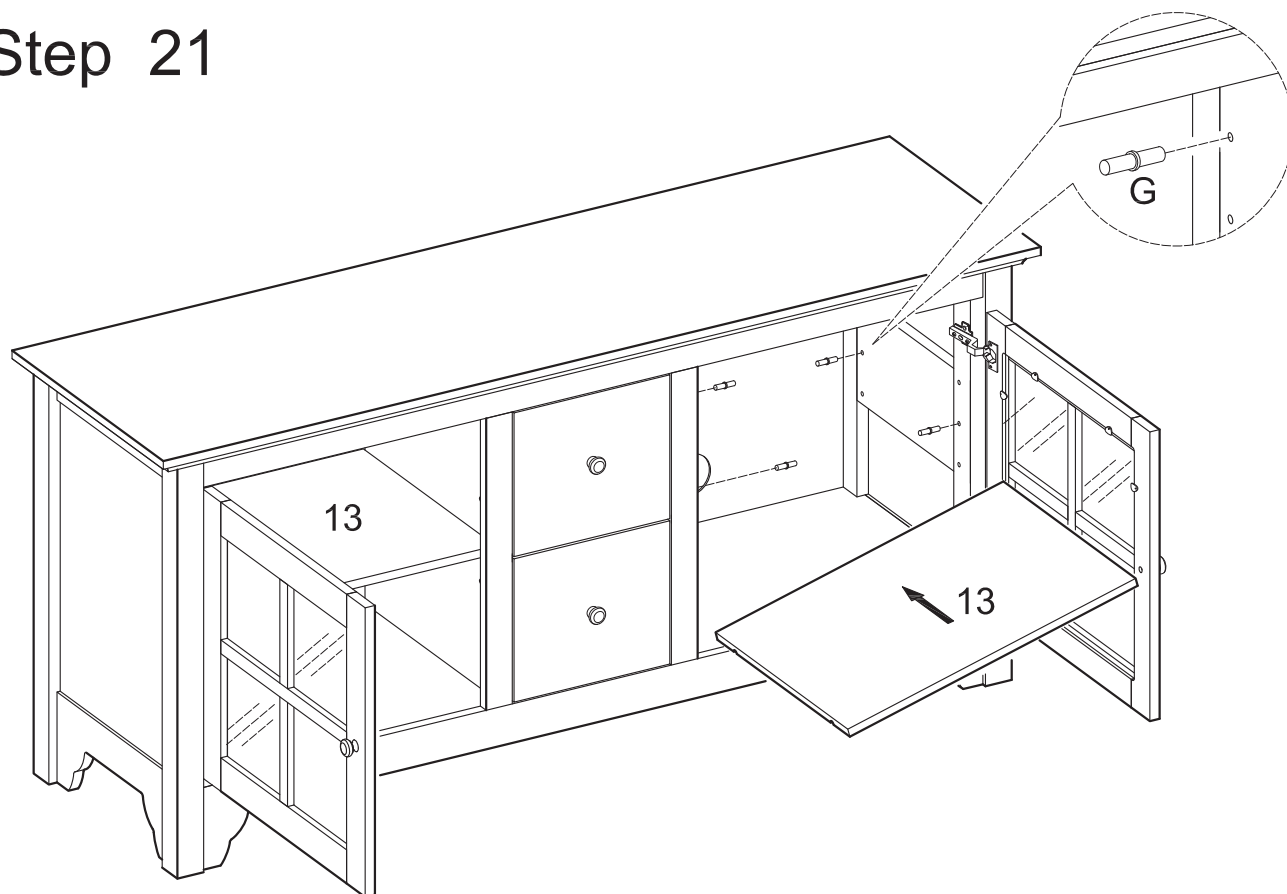
Attach hinges (L) to the interior of the assembly, then to doors (14,15) using screws (N).
Attach handles (H) to doors (14,15) using bolts (J).

Step 20



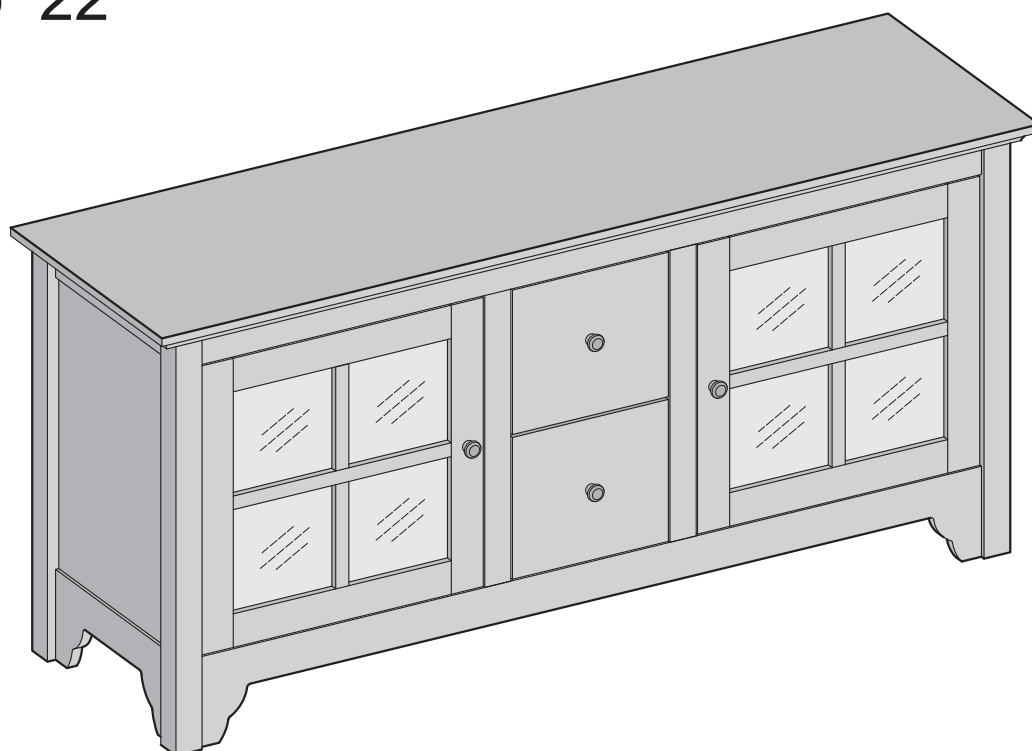
Carefully slide both drawers into the stand assembly.

Step 21



Insert shelf support pins (G) into the stand assembly at desired shelf heights. Place shelves (13) on shelf support pins (G).

Step 22



Final Assembly