

# EE SYSTEMS GROUP INC.

*Thank you for choosing eLEDing!*

It is important that you read this set-up instruction before installing

Any questions or issues, please contact us before returning

Our goal is 100% customer satisfaction

Please post your positive feedback on the web-stores

We appreciate your business! Thanks again!



(Refer Page 2 for detail of Installation)

**INSTANT 10 % DISCOUNT COUPON for any of these High Performance Solar Lights**



**EE818PLUS**

Equivalent to 100W+ Halogen Lamp or  
200 pieces traditional LED matrix flood lights  
Dusk to Dawn continuous illumination



**EE815WDC**

Equivalent to 80W+ Standard Lamp  
Upgraded dual operating SMART modes  
Dusk to Dawn continuous illumination



**EE814PLUS**

Equivalent to 60W+ Halogen Lamp or  
100+ pieces traditional LED matrix flood lights  
Dusk to Dawn continuous illumination



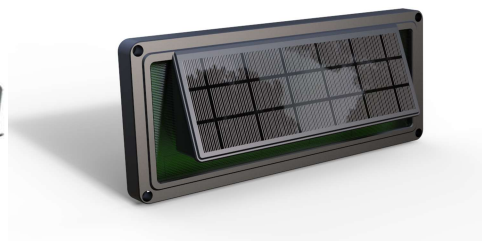
**EE805W56**

User-friendly installation & setup  
Equivalent of up to a 30-Watt standard bulb  
Dusk to Dawn continuous illumination



**EE805W1FRC & EE810W2FRC**

User-friendly installation & setup w/ Remote control  
Dusk to Dawn continuous illumination w/ motion sensing  
High efficient wall-pace lighting  
Ideal for wall Logo, advertising/sign, and entrance safety lighting



**EE801W-SL(G)**

Extendable with multiple units  
Ideal safety lights for stairs, fence, walkway  
Dusk to Dawn continuous illumination  
Color-changing illumination activated by sound



**EE828WDC**

Two adjustable ultra-bright LED flood lights  
provide a brightness level equivalent of up to  
50x50 W+ Halogen lamp  
Dusk to Dawn continuous illumination

# Solar-Powered Outdoor/Indoor Flood/Decoration Wall Pack Light

## eLEDing EE805W-SFLH / EE805W-SFLH(RGB) Quick Set-up Reference

### Light Body Installation

For ground application, secure the ground stake on U-shape brackets, insert the ground stake in your desired location (Fig 1).

For wall-mounted application, drill the holes on desired locations, secure the bracket with provided screws (Fig 2).

- For wood surfaces: drill the holes on pre-marked locations and install the mounting bracket.
- For surfaces of concrete, brick or stucco: use a masonry bit (with appropriate size & length) to drill clearance holes.

### Solar Panel Installation

An ideal installation area should be a flat and stable mounting surface that can ensure the maximum exposure to direct sunlight. An average of 4-hour direct sunlight per day is necessary for dusk-to-dawn performance (Fig 3). The light will automatically turn off when it detects low voltage from the battery caused by poor weather or bad location, this might happen after 3-4 cloudy days. For northern hemisphere installation, a southern-facing solar panel is recommended and visa-versa for southern hemisphere installation. East/west-facing installations with good sunlight exposure also works.

### True Dusk to Dawn Illuminating Profile:

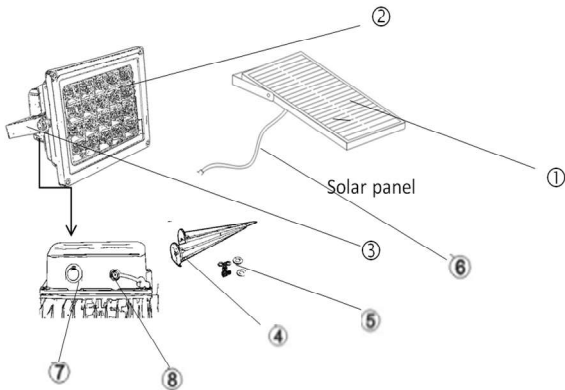
During daylight hours, the sun will charge the batteries through solar panel. During nighttime the light will automatically turn on in darkness when the built-in photocell senses the ambient light level is lower than 10 LUX/ completely dark. When dawn comes, the light extinguishes when ambient light level start to increase (This light is not featured with any motion sensing technology. For solar-powered SMART lights with motion sensing features, please refer to other eLEDing & eSenlite products: [www.eLEDing.com](http://www.eLEDing.com)).

### Functionality Test & Activation

Connect the solar panel with the light. If testing is lunched during daytime, make sure the solar panel is fully covered by a piece of cardboard. Momentary press the red-color ON/OFF button to activate the light (Fig 4). If the light doesn't turn on, recharge the battery for 1-2 days. To shut down the light, long hold press the button for 1-2 seconds, then disconnect the solar panel from the light after fully charged for storage.

### Setup Lighting Profile

- EE805W-SFLH has two brightness mode: half and full (max) brightness level. To continue pressing the ON/OFF button to select.
  - EE805W-SFLH(RGB) has 6 RGB color combination and 4 dynamic modes. To continue pressing the ON/OFF button to select.
- Color changing sequences: RGB→R→RG→G→GB→B→RB→FLASH→STROBE→FADE→SMOOTH



- 1. Solar panel
- 2. LED Light
- 3. "U" Shape bracket
- 4. Aluminum pole
- 5. Screws
- 6. DC cable 3 Meters
- 7. ON/OFF (11 Lighting Mode)
- 8. DC Input 5521



Fig 1



Fig 2



Fig 2



Fig 4

	EE805W-SFLH	EE805W-SF(RGB)
LED illuminator	64 Pcs Epistar super bright LED illuminator	20 Pcs Epistar super bright LED illuminator
Solar Panel	5W Temper Glass Solar Panel	5W Temper Glass Solar Panel
Cable	3 Meters (9.8 Ft)	3 Meters (9.8 Ft)
Battery	Lithium Battery, 3.7V, 4400mAh	Lithium Battery, 3.7V, 4400mAh
Charging time	5-6 Hrs (1000W/m <sup>2</sup> )	5-6 Hrs (1000W/m <sup>2</sup> )
Illumination time	>12 Hrs	>12 Hrs
LED life span	>50000hrs	>50000hrs
Light color	Warm & pure lighting product	RGB
IP level	65	65
Product size	7"x5.5"x1.3'	7"x6.7"x3.9'
DC port type	5521, 6V input	5521 6V Input

### Notes:

- Avoid placing objects in front of the motion detector
- Avoid installation near air conditioners/central heaters/high voltage systems
- Avoid placing the motion detector head towards high movement areas
- Clean the solar panel with a moist soft cloth at least once a year
- Clean accumulated snow as soon as possible during the snowing season
- Do not expose the light to fire/intense heat or immerse in water
- Never look directly into the light or shine it into another person's eyes