

## Model# 1137-A

### Two Handle Lavatory Faucet

#### FEATURES & SPECIFICATIONS

- Canopy Handles
- Replaceable Seats
- 3-Hole 4" Installation
- With Hole Cover

#### FINISHES

- PC Polished Chrome

#### STANDARDS

- ASME A112.18.1
- ANSI / NSF 61, SECTION 9
- CUPC / IAPMO LISTED
- ANSI A117.1 / ADA COMPLIANT
- CONTAINS NO MORE THAN 0.25% WEIGHTED AVERAGE LEAD CONTENT



#### FLOW

- 1.2 GPM Flow Rate

#### WARRANTY

- Lifetime Limited Warranty
- Lifetime Residential Warranty
- 5 Year Commercial Warranty

1137-A/REV. 10 2017

Product Specifications subject to change without notice

Job Name \_\_\_\_\_ Date \_\_\_\_\_

Model Specified \_\_\_\_\_ QTY \_\_\_\_\_

Customer/Wholesaler \_\_\_\_\_

Contractor \_\_\_\_\_

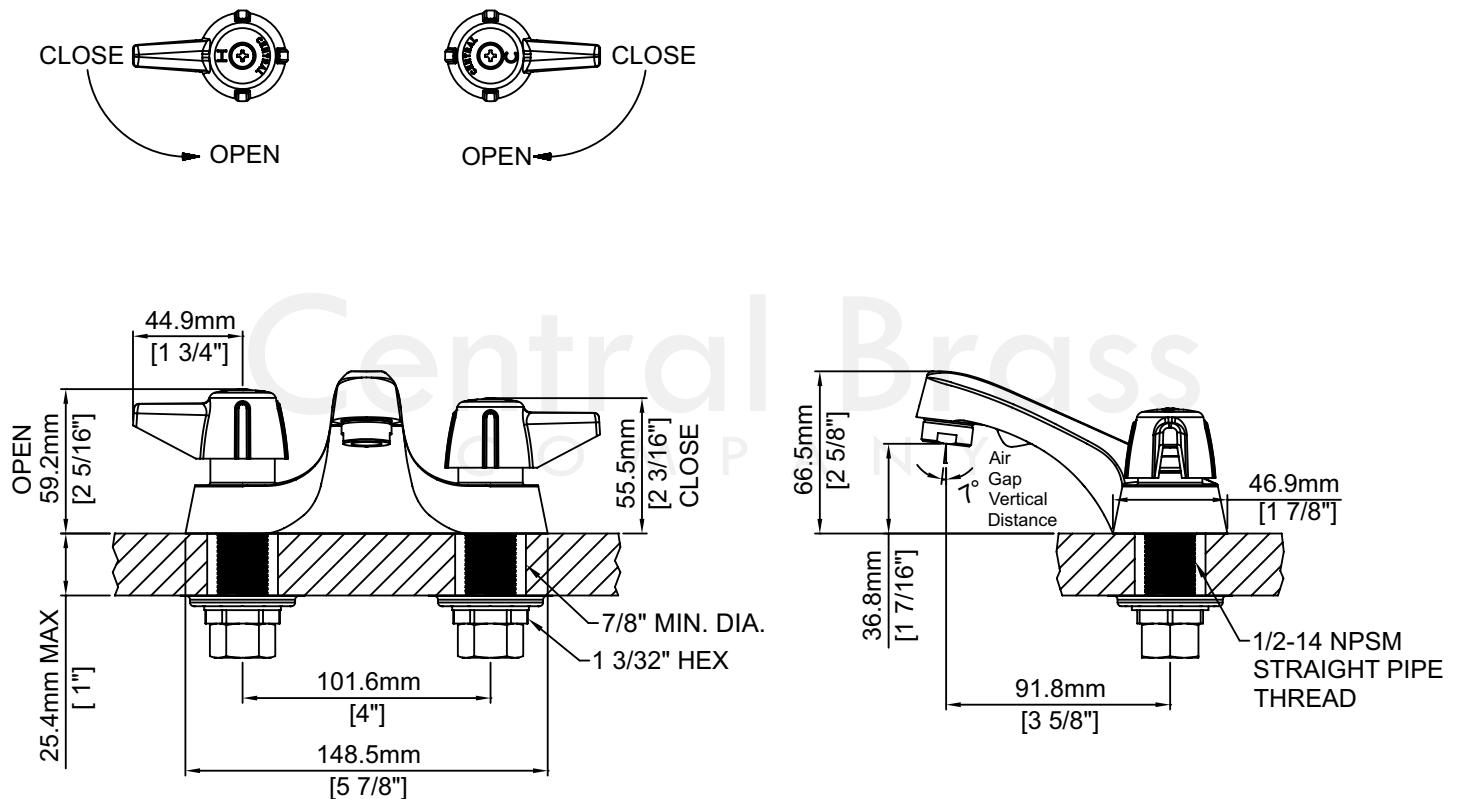
Architect/Engineer \_\_\_\_\_

Submitted as Shown \_\_\_\_\_

Submitted w/ Variations \_\_\_\_\_

## Model# 1137-A

### Two Handle Lavatory Faucet



1137-A/REV. 10 2017

Product Specifications subject to change without notice