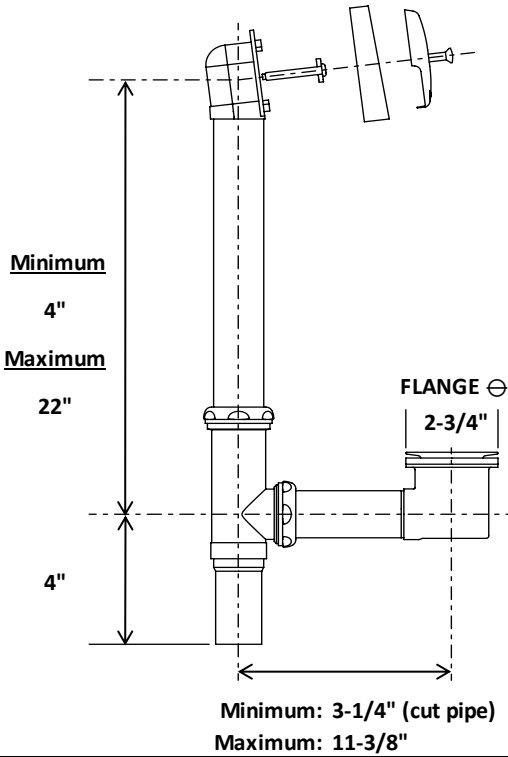




BBUX: INSTALLATION

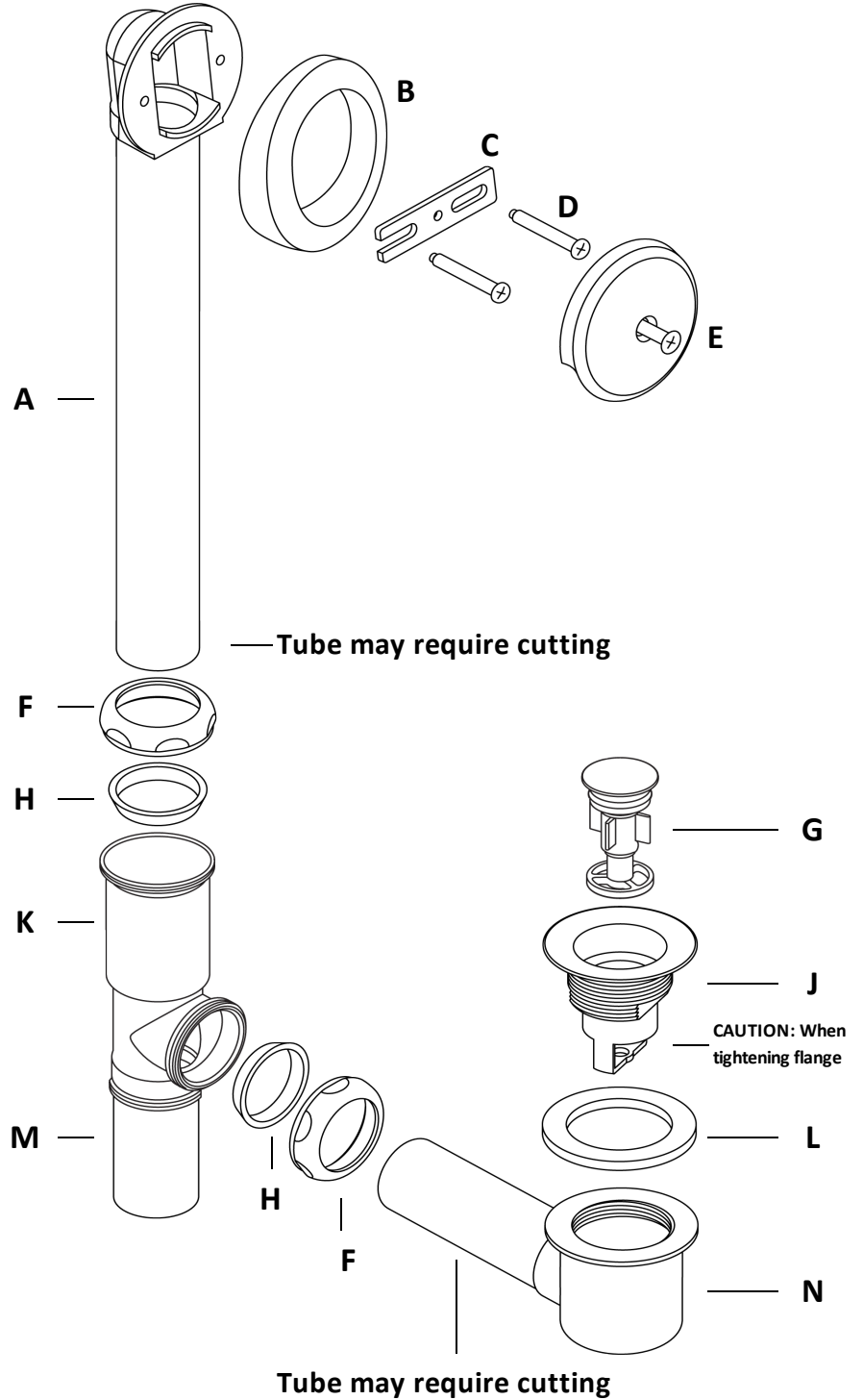
71233-##

Rough-in Dimensions



PART DESCRIPTION

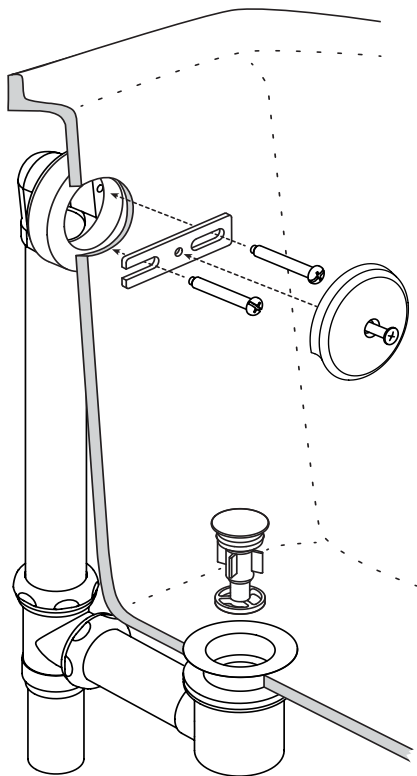
A	Overflow Tube Assembly
B	Overflow Gasket
C	Overflow Retaining Plate
D	Overflow Screws
E	Overflow Cover and Screw
F	Slip Joint Nut
G	Pop Down® Stopper
H	Slip Joint Seal
J	Pop Down® Flange
K	Drain Tee
L	Rubber Washer
M	1-1/2" OD Tail Piece
N	Shoe Ell & Tube Assembly



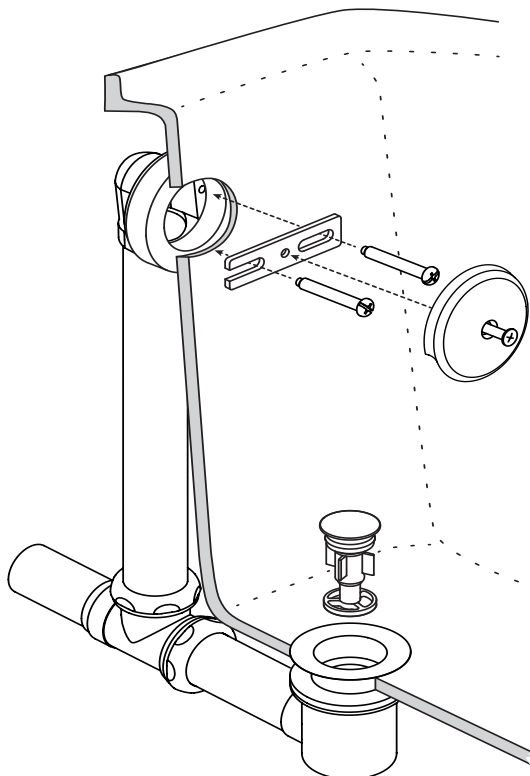


BBUX: INSTALLATION (continued)

71233-##



Vertical Sanitary Sewer Configuration



Horizontal Sanitary Sewer Configuration

INSTALLATION: Bounty Brassware recommends installation by qualified technician as required in your local jurisdiction

- ⇒ Study parts on Page 1 and install per your required configuration shown above
 - ⇒ Test-fit entire assembly prior to final installation to verify correct tube length on SHOE ELL TUBE and OVERFLOW TUBE assemblies
 - ⇒ Cut tubes as necessary for performing a "test-fit"
 - ⇒ Once test-fit is correct, proceed with final installation
-
- Apply non-staining sealant to underside of FLANGE (caution: some plumbers putty may void finish warranty)
 - Seat FLANGE into tub drain opening from within tub. Assure an adequate seal is achieved with sealant
 - From underside of tub place RUBBER WASHER on to FLANGE
 - Screw SHOE ELL ASSEMBLY on to FLANGE
 - Tighten FLANGE from within tub ***DO NOT OVER TIGHTEN***
 - Install Overflow Assembly as per test-fit. Be sure to apply teflon tape to threads of over-flow screws
 - Test entire unit for water tight integrity with the use of a test-ball or similar. Fill tub to a point above the overflow and check for leaks





BOUNTYBRASSWARE
Designer Bathroom Fittings



The Pop Down® for Tubs

WWW.BOUNTYBRASSWARE.US

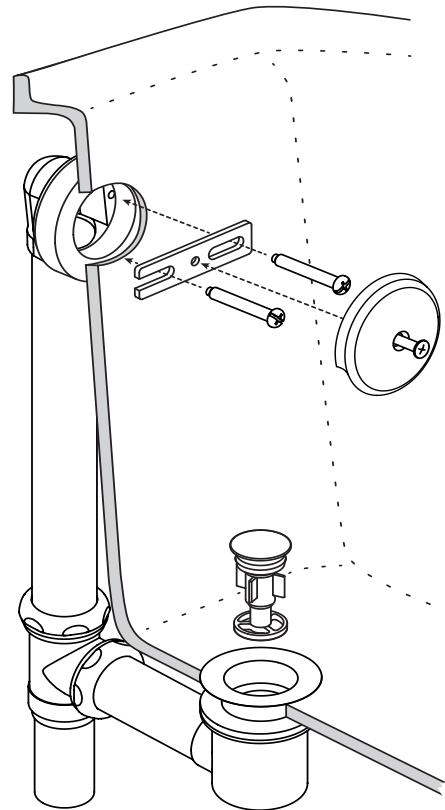
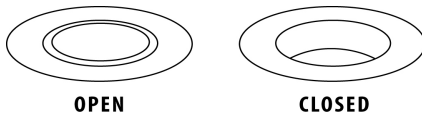
BBUX: Specifications

71233-## and 71233-##-FULL

Features

- Exclusive World Wide Patented Pop Down® Closure
- Elegant Profile: Stopper Sits Flush in Open Position
- Solid Brass Construction
- 1-1/2" OD Tube Connection

Operation



Compliance



- ASME A112.18.2-2011 / CSA B125.2-11
- Uniform Plumbing Code UPC®
- National Plumbing Code of Canada

Finishes / Colors "-##" ‡

- -PC Polished Chrome, Standard Finish
- -AB Antique Brass, Artisan Finish
- -BTB Bella Terra Bronze, Artisan Finish
- -GRP Graphite, Satin PVD Finish
- -LSG Satin Gold, Satin PVD
- -MOB Mocha Bronze, Matte PVD Finish

Add "-FULL" to indicate fully finished

- -ORB Oil Rubbed Bronze, Natural Finish
- -MBLK Matte Black, Artisan Finish
- -PVD Polished Brass, PVD Finish
- -PN Polished Nickel, PVD Finish
- -SN Satin Nickel, Natural Finish
- -SS Satin Nickel PVD, (Stainless Steel Look)

‡ -PC Finish is cUPC® approved. Alternate finish compliance pending IAPMO approval process

Product Specification

Add Finish/Color Suffix "-##"
to Below Model Number

The tub drain shall be made of solid brass and ancillary durable material construction. The drain shall be furnished with 1-1/2" OD connection. The Drain shall have a Pop Down® stopper. The drain shall be Bounty Brassware® BBUX Pop Down® 71233-____