

8½" Dia.

18½" H



## REGAL

### 1722BG

#### MEDIUM HANGING LANTERN

Regal has a grand Old World style that features cast aluminum construction and elegant decorative stamped detailing in a Black Granite finish. Clear seedy water glass adds timeless sophistication.

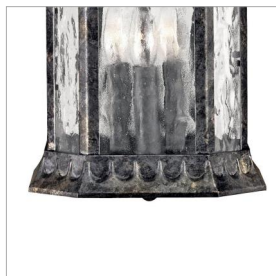
DETAILS	
FINISH:	Black Granite
MATERIAL:	Cast Aluminum
GLASS:	Clear Seedy Water Glass
SLOPE DEGREE:	90

DIMENSIONS	
WIDTH:	8.5"
HEIGHT:	18.5"
WEIGHT:	8lb

LIGHT SOURCE	
LIGHT SOURCE:	Socket
WATTAGE:	3-40w Cand.
VOLTAGE:	120v

MOUNTING	
CANOPY:	5" Dia.
LEAD WIRE:	1 X 72"

SHIPPING	
CARTON LENGTH:	12
CARTON WIDTH:	18
CARTON HEIGHT:	11
CARTON WEIGHT:	10



#### PRODUCT DETAILS:

- This chain or cable hung fixture may be installed on any sloped ceiling
- Suitable for use in damp locations as defined by NEC and CEC. Meets United States UL Underwriters Laboratories & CSA Canadian Standards Association Product Safety Standards
- 2 year finish warranty
- Classic lines and heritage details complement traditional architecture
- Rich gray tone

# HINKLEY

HINKLEY  
33000 Pin Oak Parkway  
Avon Lake, OH 44012

PHONE: (440) 653-5500  
Toll Free: 1 (800) 446-5539

[hinkley.com](http://hinkley.com)