

Owner's Manual and Instructions

Outdoor Steel Fireplace

Important!

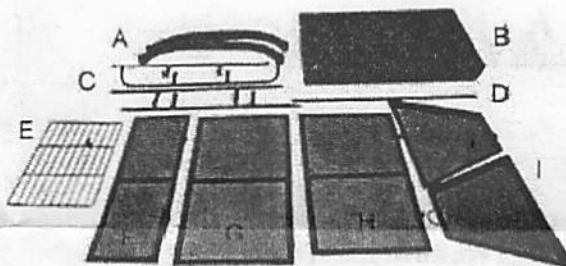
Please read and follow ALL instructions before assembling or using this product, particularly the safety statements. Failure to follow instructions and warnings could result in damage to property, serious injury or death.



Parts Check List

Check package for all parts needed for assembly

	Part Description	QTY.	Part.
<input type="checkbox"/>	Legs	2	A
<input type="checkbox"/>	Fire Bowl	1	B
<input type="checkbox"/>	Guard Rails	4	C
<input type="checkbox"/>	Flat Bar	1	D
<input type="checkbox"/>	Grate	1	E
<input type="checkbox"/>	Top Screen	1	F
<input type="checkbox"/>	Back Screen	1	G
<input type="checkbox"/>	Front Screen	1	H
<input type="checkbox"/>	Side Screens	2	I
<input type="checkbox"/>	Hardware	1 pack	



Assembly Instructions

1. Carefully unpack all parts from box.
2. Align holes of Legs (A) with holes of Fire Bowl (B) (Figure 1).
3. Insert bolts and secure with nuts. Tighten nuts with wrench (Figure 2).
4. Attach Front and Back Guard Rails to Fire Bowl (Figure 3). Repeat with 2 side Guard Rails (Figure 4).
5. Tighten all screws.

Figure 1



Figure 2

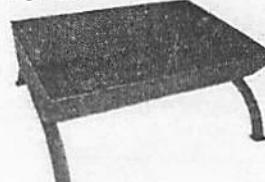
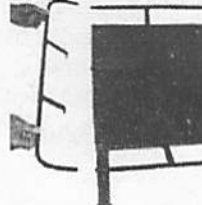


Figure 3



Figure 4



(CONTINUED ON BACK)

(CONTINUED FROM FRONT)

6. Attach Back Screen Panel (G) to Side Screen Panels (I) (Figure 5).
7. Align holes of Flat Bar (D) to Side Screens and attach with screws.
8. Attach Top Panel to screen assembly with hinges on the front (Figure 7).
9. Tighten all screws.
10. Slide hinge of Front Screen in to hinge of Top Panel (Figure 8).
11. Place screen assembly on fireplace.
12. Enjoy!

Figure 5



Figure 6

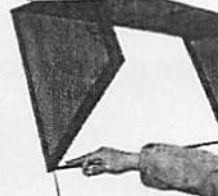
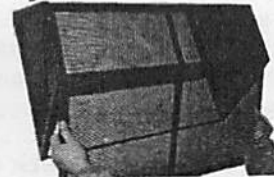


Figure 7



Figure 8



⚠ WARNING

- Outdoor Use Only. Never use in enclosed area. Use in unventilated areas will endanger your life.
- Keep away from all combustible materials including gasoline and other flammable liquids and vapors.
- **NEVER** use flammable accelerants, such as: Gasoline, Alcohol, Paint Thinners, Kerosene, etc. to start a fire. Serious injury or property damage could result.
- Use on a level, noncombustible surface only.
- Keep away from house, garage, balconies, or overhangs.
- Avoid using during dry or windy conditions.
- Keep out of reach of children.
- Do not overfill or use to burn leaves or trash.
- Exercise the same care you would with an open fire.
- Never leave unit unattended while hot or in use.
- Completely extinguish fire before leaving.
- Use gloves to handle or move. Ashes can remain hot for a long time after fire is extinguished.
- Dispose of cold ashes properly.
- Store only when unit is cool to the touch.

Maintenance:

- Fireplace may be cleaned with water and mild detergent.
- Periodic maintenance is required to return painted steel surfaces to original appearance. Remove any rust with sandpaper or steel brush and repaint with grill paint suitable for high-temperature surfaces. Follow manufacturer's instructions.