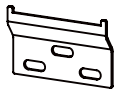


A x 1 Alfred cabinet



B x 4 Wall bracket



C x 12  
Medium  
size  
screw



D x 6  
Long  
size  
screw



D x 18  
Anchors

*(Discard  
anchors for  
installation in  
the USA. Use  
wood re-  
enforced walls  
instead.)*

## TOOLS REQUIRED



Phillips  
screwdriver



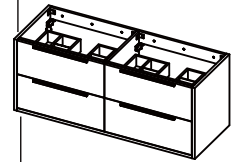
Measuring  
tape



Power drill



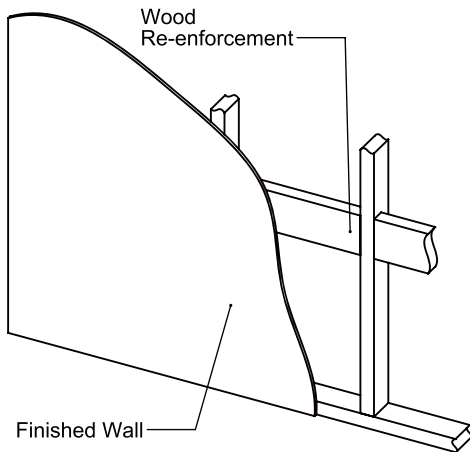
Pencil



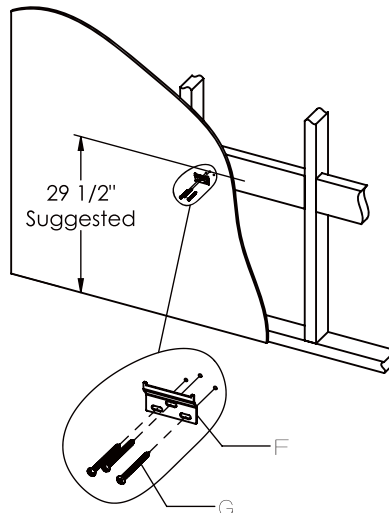
Finished view

## INSTALLATION INSTRUCTIONS IC9060

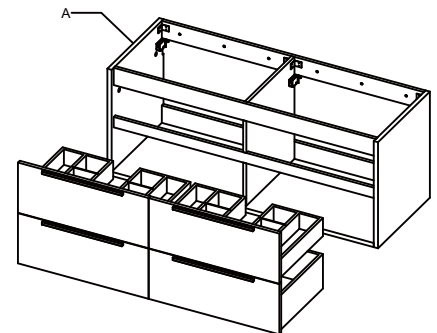
- 1** Re-enforce the wall using a sheet of plywood or 2" by 6" wood beams.



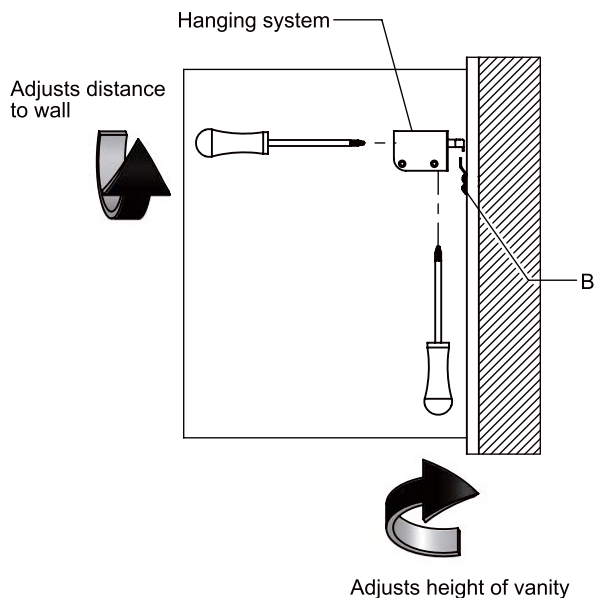
- 2** Measuring for the desired height, secure all four wall brackets (B) to the wall. Make sure that screws (C) go into the re-enforced area of the wall. 29.5" to the top screw is the recommended height.



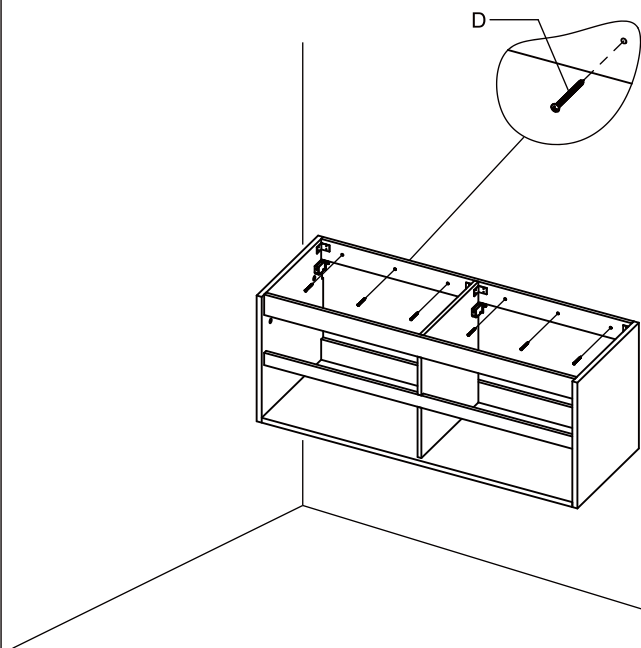
- 3** Remove drawer from **ALFRED** cabinet (A). See drawer removal below.

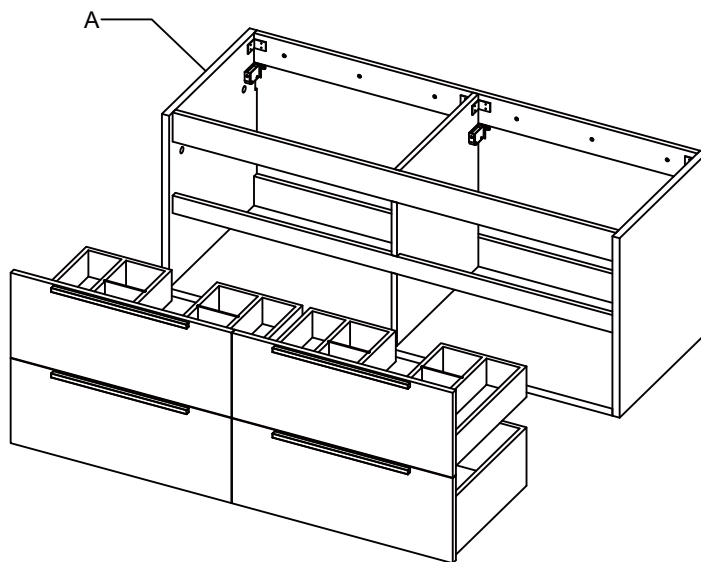


- 4** Hang cabinet (A) onto wall brackets (B) and adjust hanging system as shown below.



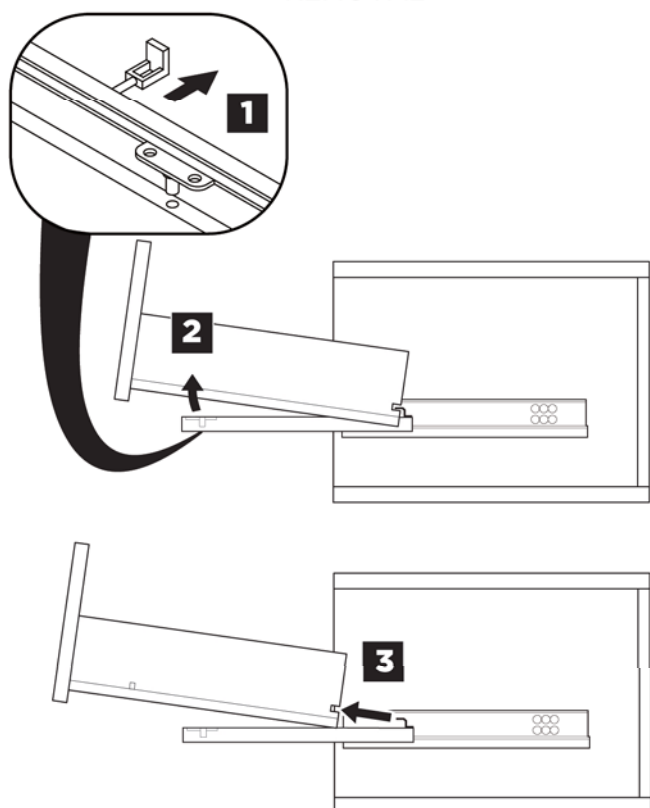
- 5** Secure cabinet (A) to the wall using long screws (D). Make sure to drive screws (D) into re-enforced area of the wall.





## DRAWER REMOVAL AND INSTALLATION

### REMOVAL



### INSTALLATION

