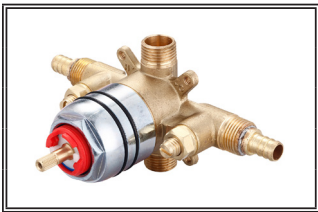


SPECIFICATION SHEET



SINGLE HANDLE PRESSURE BALANCE TUB AND SHOWER VALVE ONLY



P-2305B SHOWN

Model #: _____

Specific Features: _____

Project Name: _____

Submitted For: _____

Date: _____

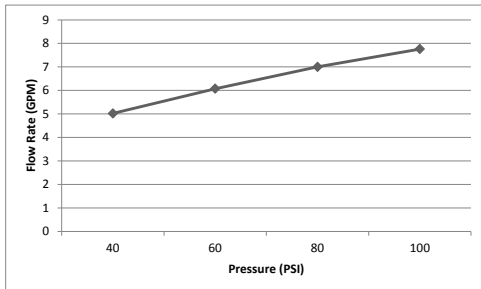
- 1/2" PEX Inlets & Combo CXC & IPS Outlets
- Pressure Balance Spool Included
- Brass Inlet Stops
- Ceramic Disc Cartridge With Temperature Limit Stop
- Back to Back Installation

Model #	Features	Finish	
P-2305B		CP	
P-2305B-B	Builder Tract Pack	CP	

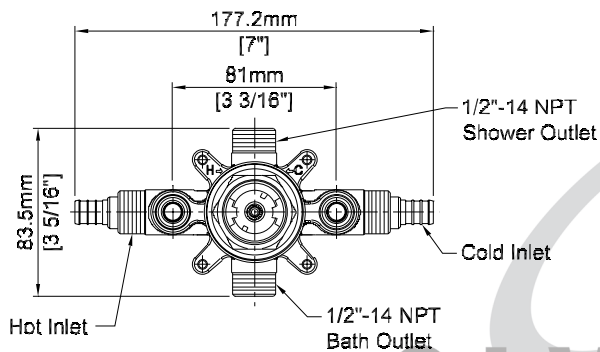
Olympia products are engineered and manufactured to meet the following standards and codes:

ASME A112.18.1 / CUPC Listed

P-2305B Flow Rate (GPM) Vs Pressure (PSI) For Tub Port*

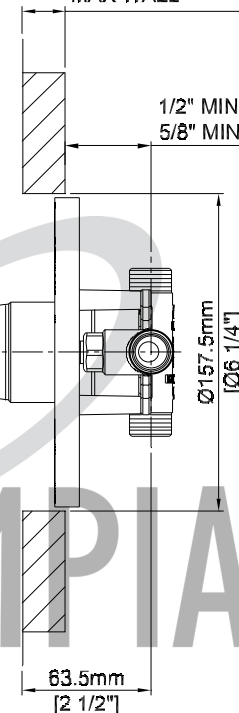


*Note:- This information is provided for reference only. Actual Flow Rate may vary depending on installation and inlet pressures.

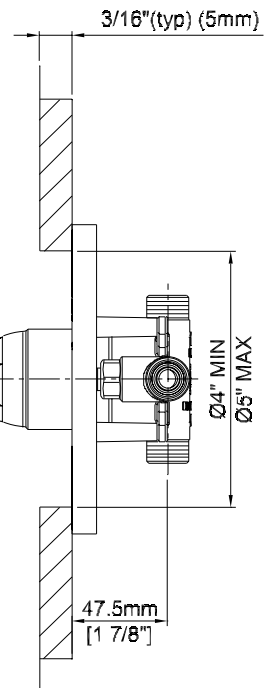


2" CXC (51mm)
 1 7/8" IPS (48mm)
 MAX WALL

1/2" MIN CXC (13mm)
 5/8" MIN IPS (16mm)



THICK WALL



THIN WALL