

HEPBURN 72" DOUBLE SINK BASE CABINET

ARIEL

T072D



BASE CABINET DIMENSIONS

72" W x 21.5" D x 34.5" H

FEATURES

- Solid wood frame & plywood panels
- Dovetail drawers and joints
- Soft closing doors & drawers

HARDWARE FINISHES



Brushed Nickel



Satin Brass



Matte Black



Polished Chrome

AVAILABLE COLORS



White

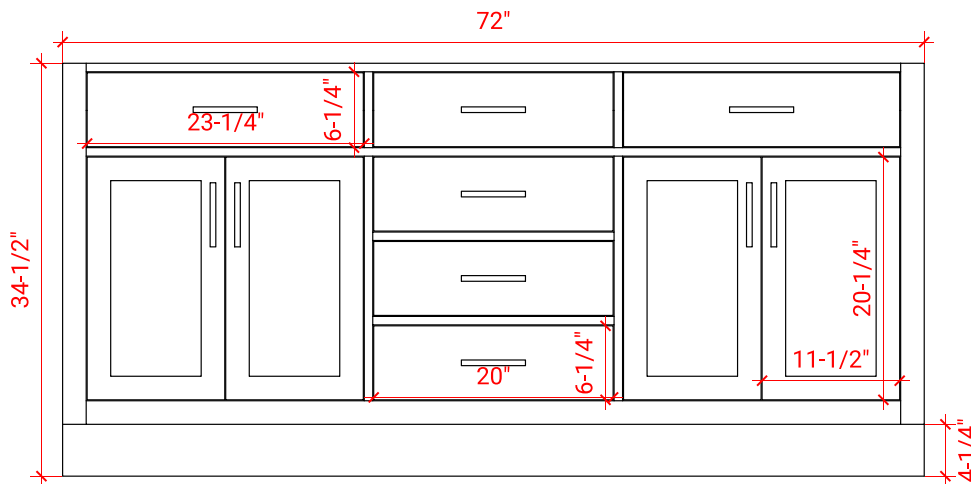


Grey

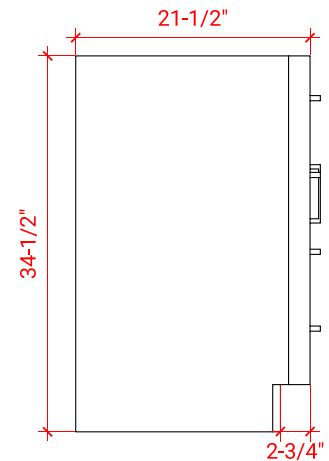


Midnight Blue

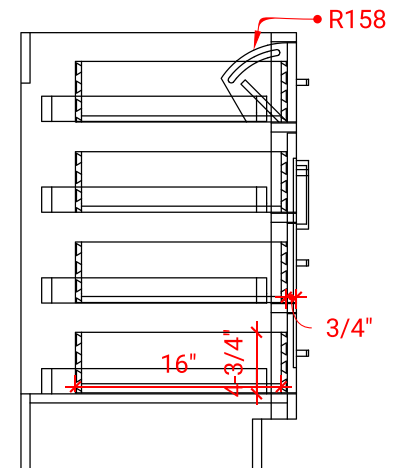
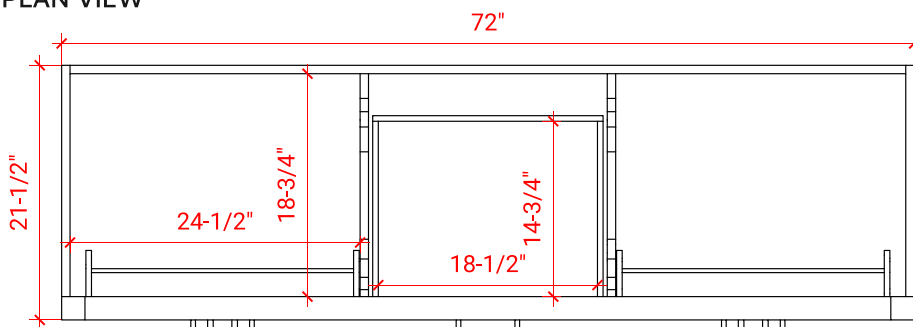
FRONT VIEW



SIDE VIEW



PLAN VIEW



ARIEL

72.25" W x 22".D x 1.5" H

- Solid countertop with mitered edges & seams
- Undermount white rectangular sink
- Pre-drilled for 8" widespread faucet

- Countertop
- Matching Backsplash
- Rectangle Sinks

Technical drawing of a rectangular panel with two identical internal rectangular cutouts. The overall dimensions are 72-1/4 inches in width and 22 inches in height. Each cutout is 17-1/4 inches wide and 12 inches high. The cutouts are positioned 5-1/2 inches from the top and bottom edges and 14-1/4 inches from the left and right edges. The distance between the cutouts is 1-3/8 inches. The drawing includes dimension lines and arrows indicating the measurements.

[illegible]

Isometric view of the sink unit. Dimensions shown: 22" (width), 72-1/4" (length), 4" (height), and 1-1/2" (depth).