



**Poise®**  
Under-Mount Bar Sink  
**K-3161**

**Features**

- 21-inch minimum base cabinet width.
- Single bowl.
- 9-inch depth.
- No faucet holes.
- SilentShield® sound-absorption technology offers quieter performance.
- Includes installation hardware, bottom sink rack, and bamboo cutting board.

**Material**

- Handcrafted from 16-gauge stainless steel.

**Installation**

- Under-mount

**Recommended Products/Accessories**

K-8801 Sink Strainer  
K-8799 Sink Strainer

**Included Components**

Product consists of:

K-3142 Sink Rack  
91915 Hardware Kit  
K-3140 Cutting Board



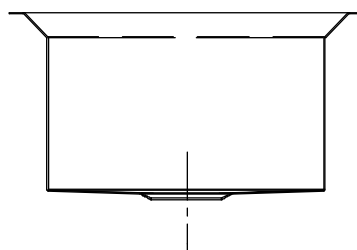
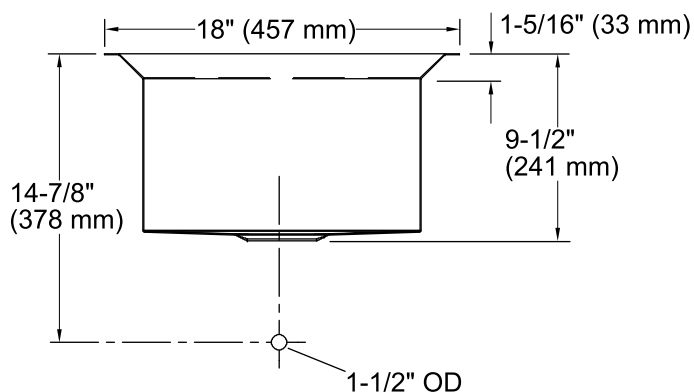
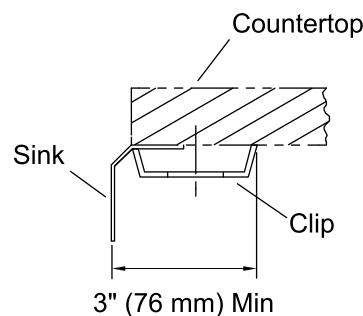
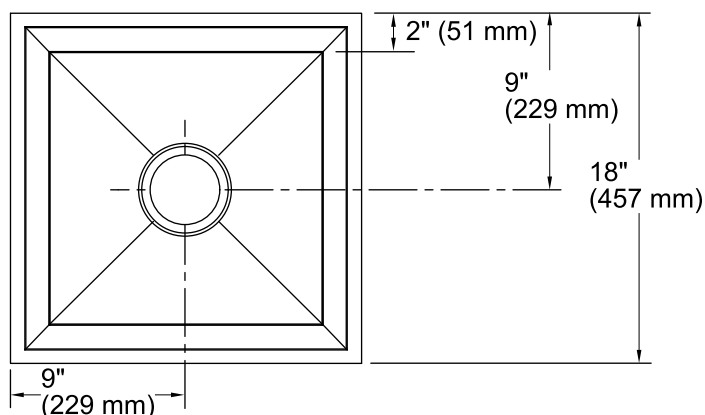
ADA

**Codes/Standards**

ASME A112.19.3/CSA B45.4  
ADA  
ICC/ANSI A117.1

**Lifetime Limited Warranty for  
KOHLER® Stainless Steel Sinks**

See website for detailed warranty information.



## Technical Information

All product dimensions are nominal.

Bowl configuration: Single

Installation: Under-mount

Min. base cabinet width: 21" (533 mm)

Bowl area (Only): Length: 14" (356 mm)  
Width: 14" (356 mm)  
Bowl depth: 9-3/16" (233 mm)

Drain hole: 3-5/8" (92 mm)

Template: 1022021-7, required, included

## Notes

Install this product according to the installation instructions.

Allow a minimum of 3" (76 mm) clearance around the sink rim for clip attachment.

ADA compliant when installed to the specific requirements of these regulations.