

Step by Step Assembly Instructions:

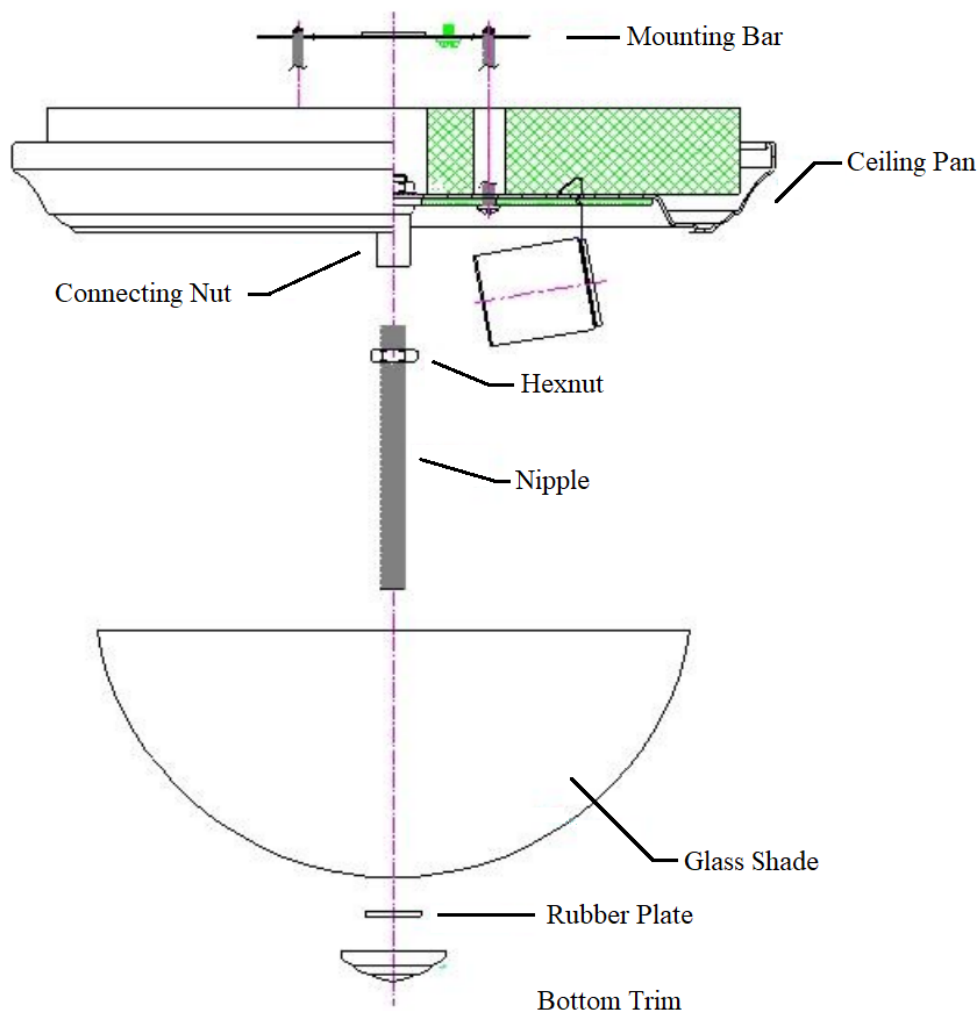
Step 1: Properly align the Mounting bar first before screwing in.

Step 2: Screw the Nipple into the Connecting Nut of the Ceiling Pan and fix it with Hexnut tightly with care.

Step 3: Install the bulb/s carefully.

Step 4: Put the Glass Shade then the Rubber Plate exactly through the Nipple.

Step 5: Place the Bottom Trim securely in place.



Assembly Guide

While holding glass securely, unscrew button at bottom. Depending who installed it, there may be another nut on the threaded rod that will have to be removed after you take the button off. Some installers put the extra nut and some do not. Remove glass and replace bulb.