
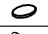




Item: 6201-75906 MULTI Voltaire Display Cabinet

Thank you for purchasing this quality product. Be sure to unpack carefully looking for small parts which may have come loose during shipment.

Read all instruction and study the drawing carefully before starting the assembly process:

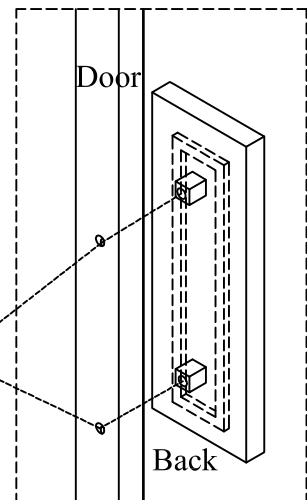
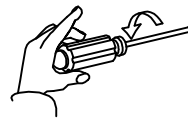
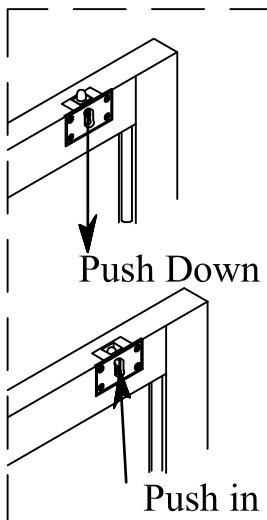
HARDWARE PACK

| NO | DRAWING | DESCRIPTION | SIZE | Q'TY |
|----|---|-------------|-----------------|-------|
| 1 |  | Glass Pin | φ 6.5*10(V1006) | 16pcs |
| 2 |  | Glass Pad | φ 15*3 | 16pcs |
| 3 |  | Bolt | φ 5/32"*1-1/8" | 2pcs |
| 4 |  | Door pull | 261*90*33mm | 1pc |

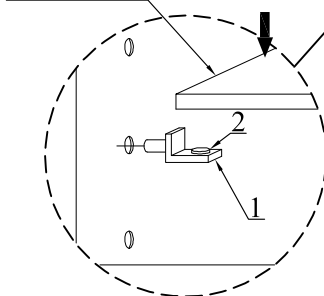
ADJUSTING SREW

Adjusting this roller down will move the top of the door to the right.
Adjusting roller up will move the top of the door to the left.

Adjusting this roller down will move the top of the door to the right.
Adjusting roller up will move the top of the door to the right.



Glass Shelf



Note: Anti - tip kit restranit is provided.
Please follow the instruction enclosed with the pack.

Adjust levelers if needed, to level case on uneven floor

