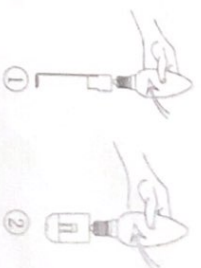


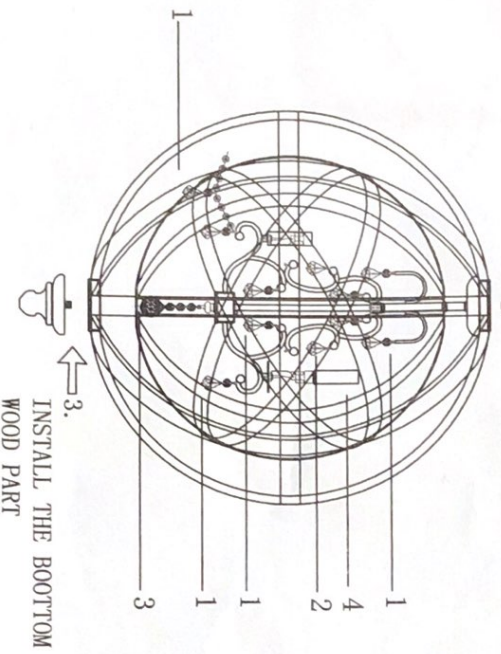
Cautions of installation

Install the bulbs

CHOOSE TYPE B BULB, INSTALL THE CRYSTALS ACCORDINGLY, PLEASE DO NOT TOUCH THE SOCKET WHEN INSTALLING



1. PUT THE CABLE GO THROUGH THE TOP WOOD PART AND EAR RING. FIX IT IN THE GLOBE WOOD BODY
NOTICE.
THERE MAYBE A LITTLE GAP BETWEEN THE TOP WOOD PART AND THE GLOBE BODY. WE CAN RELEASE THE EAR RING AND ADJUST THE THREAD INSIDE TO AVOID IT
2. LOCK THE CHAIN ON THE EAR RING



3. INSTALL THE BOOTTOM WOOD PART

- | | | | | | |
|--------|-------|------|-------|-------|-------|
| 1 | 2 | 3 | 4 | 5 | 6 |
| | | | | | |
| 25 PCS | 5 PCS | 1 PC | 5 PCS | 1 PCS | 1 PCS |

