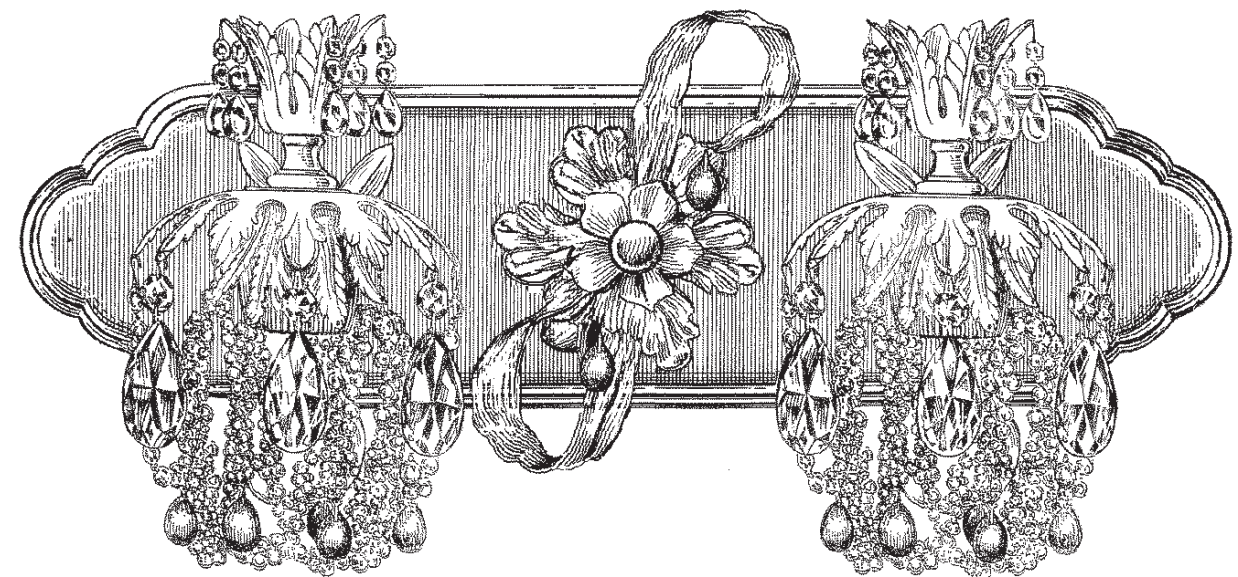


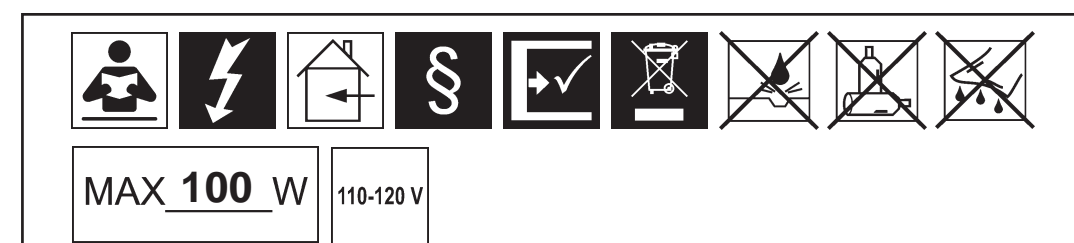


RONDELLE 1255- _ _ _ _



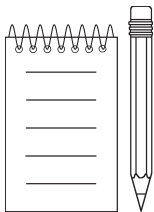
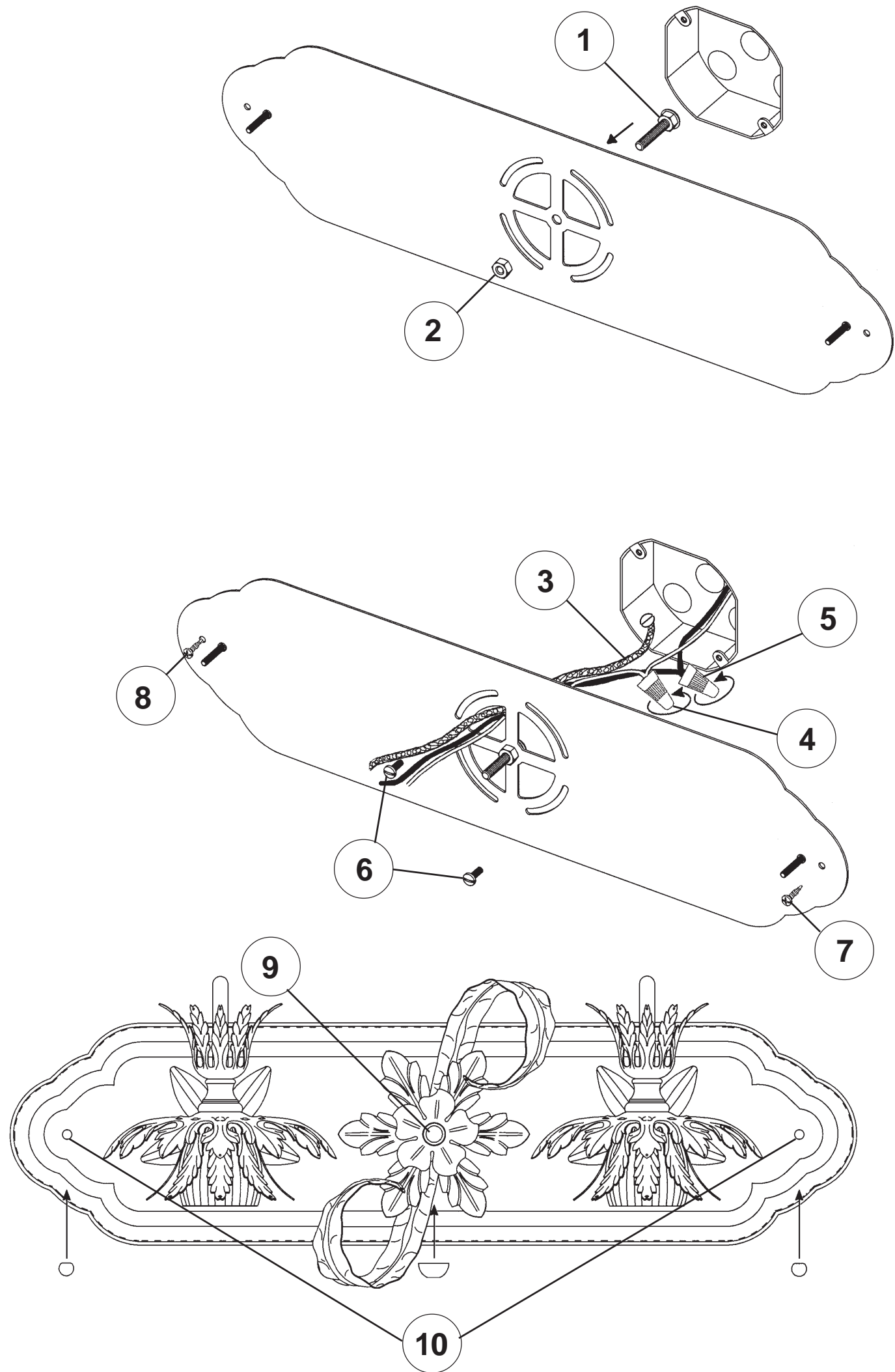
THIS DESIGN IS THE PROPRIETARY
TRADE DRESS/TRADE MARK OF
SWAROVSKI LIGHTING, LTD.

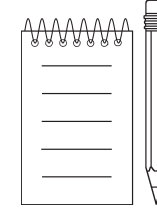
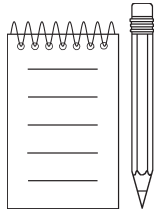
2 Lights
Diameter: 21"
Body Length: 9-1/2"
Extension: 8"
Hanging Weight: 5 lbs.

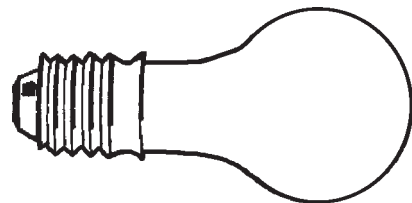


SCHONBEK® is a member of the Swarovski group.

All electrical components must be installed by a licensed electrician in accordance with the National Electric Code and the appropriate local electrical codes.







2 - Type A
25 Watts Recommended (supplied)
100 Watts Max

Install bulbs and test fixture
BEFORE hanging trim.

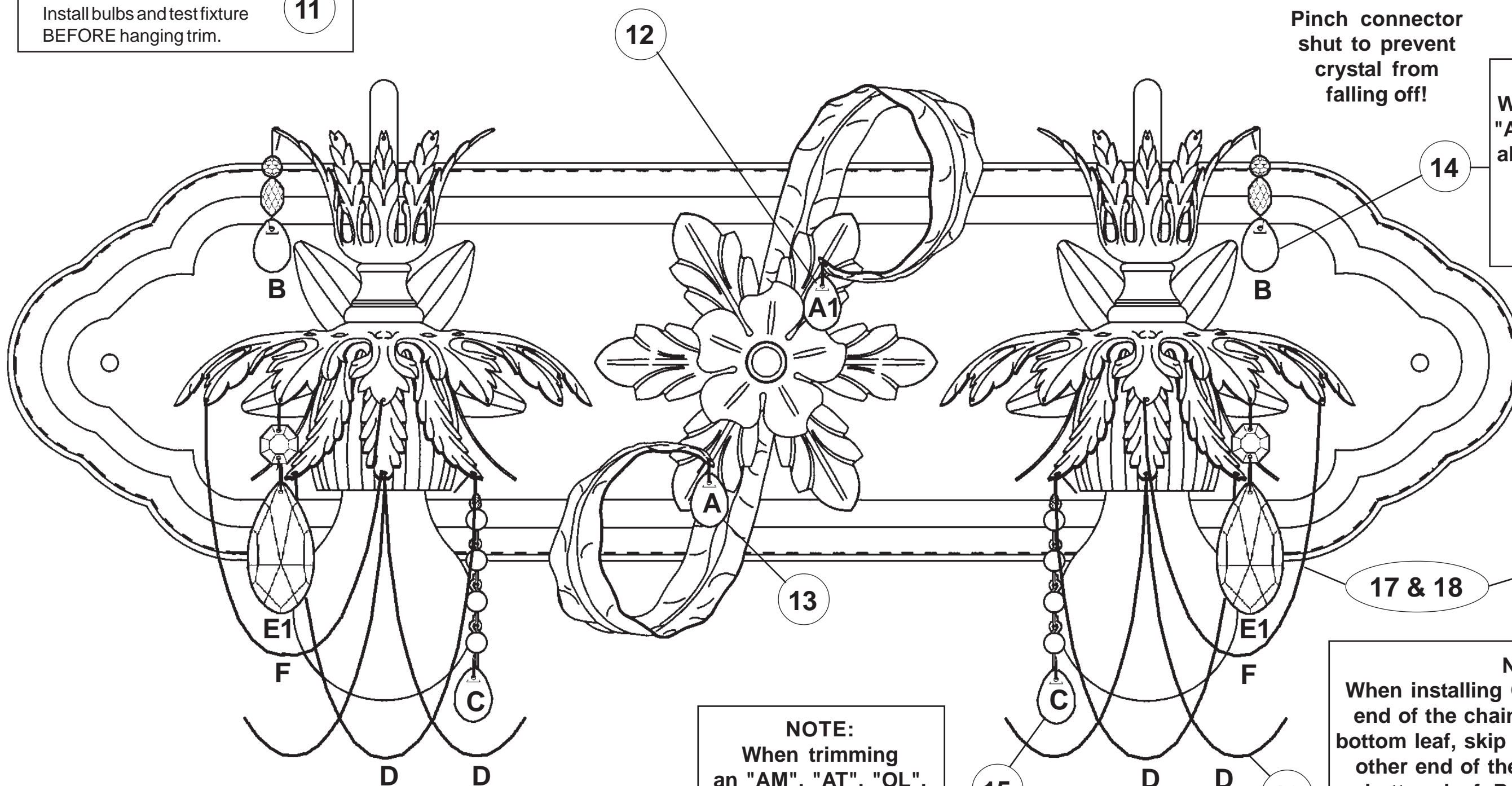
11

NOTE:
When trimming
Soft Jewel Tones™ "SJ", for best
appearance, alternate hanging
trim so that similar colors are
NOT next to each other.

NOTE:
Pinch connector
shut to prevent
crystal from
falling off!

NOTE:
When trimming an "AM",
"AT", "OL", "SM" or "TO"
alternate hanging colors
"B & B1".

"SJ": one of
each color.



NOTE:
When trimming
an "AM", "AT", "OL",
"SM" or "TO" alternate
hanging colors
"C & C1".

"SJ": one of each
color plus an extra
amethyst and olivine
drop.

NOTE:
Alternate hanging
Letters "E1" and
"F" from every
other top leaf!

NOTE:
When installing Chains "D" hook one
end of the chain into the hole of the
bottom leaf, skip one leaf and hook the
other end of the chain into the next
bottom leaf. Repeat for all leaves.
See illustration.

