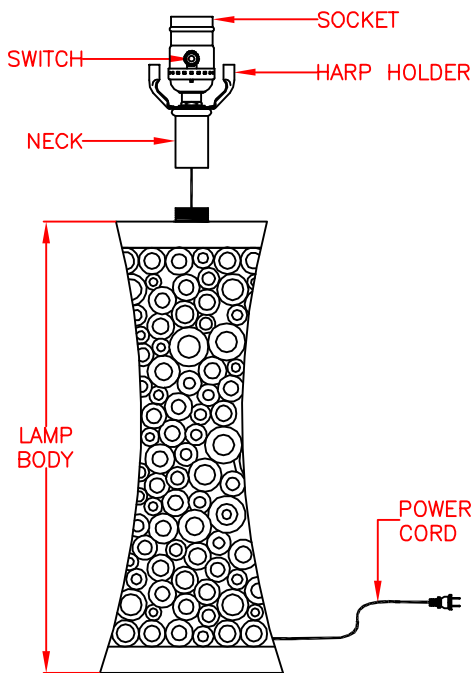
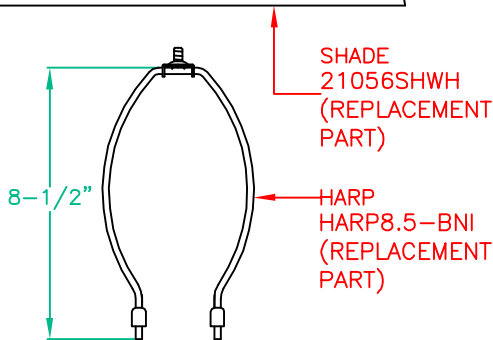
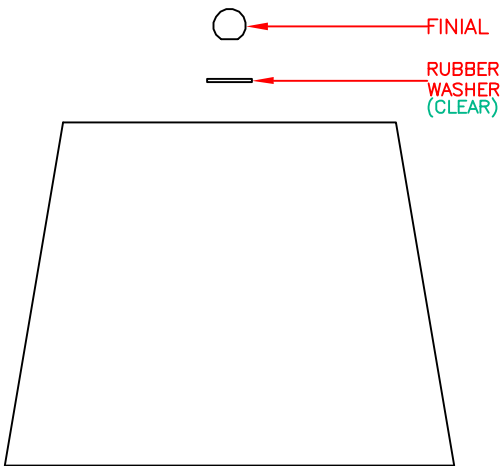


## PRODUCT SPECIFICATIONS



**AVAILABLE PARTS ARE:**  
21056SHWH (SHADE)  
HARP8.5-BNI (HARP)

- OVERALL ASSEMBLED DIMENSIONS**  
HEIGHT: 66 CM (26"), WIDTH: 34.3 CM (13-1/2") DIA.
- 1 LIGHT:** UL LISTED, 150 WATT, MEDIUM BASE E-26 ALUMINUM SOCKET. 3-WAY ROTARY SWITCH. THE HARP, SADDLE, SPIDER ARE BS FINISH, THE SOCKET IS SILVER FINISH.
- FINIAL:** PAINTED RESIN, 2.5 CM (1") DIA. x 2.3 CM (7/8") HEIGHT.
- SHADE:** WHITE TAPERED DRUM SHADE, 25.4 CM (10") DIA. (TOP) x 34.3 CM (13-1/2") DIA. (BOTTOM) x 26.7 CM (10-1/2") SLANT HEIGHT. THE SPIDER DIAMETER IS NOT LESS THAN Ø4 MM. THE SHADE FABRIC CONTENT: 20% COTTON AND 80% TERYLENE.
- NECK:** PAINTED STEEL, 2.5 CM (1") DIA. x 5.2 CM (2") HEIGHT.
- LAMP BODY:** PAINTED CERAMIC, 11.5 CM (4-1/2") DIA. (TOP) x 13.6 CM (5-3/8") DIA. (BOTTOM) x 34.5 CM (13-5/8") HEIGHT. FELT PAD INSTALLED ON BOTTOM OF LAMP BODY.
- CORD:** UL LISTED, MIN 183 CM (6 FT.) LENGTH, 18 AWG., 2 CONDUCTORS, 105°C, TYPE SPT-2, CLEAR/SILVER COLOR. COPPER MATERIAL, PLATED SILVER. WIRES MUST BE LEAD FREE. THE CORD EXIT MUST BE VERY NEAT AND CLEAN, NOT RAGGED.
- LABELS:** UL, CSA OR CUL, MANUFACTURING DATE, MODEL # AND COUNTRY OF ORIGIN LABELS PROVIDED ON BOTTOM OF BASE. RELAMPING LABEL FOR 150 WATT MAX. TYPE "A" 3-WAY BULB PROVIDED ON SOCKET.

### PACKAGING AND SHIPPING DETAILS

- THE LAMP IS DISASSEMBLED FOR SHIPPING. EACH PART IS CAREFULLY WRAPPED IN A PLASTIC BAG AND PLACED SECURELY IN THE INNER PACKING SO IT CAN NOT MOVE AROUND DURING SHIPPING. A SMALL BAG OF SILICA IS INCLUDED IN THE PACKAGE.
- THE CARTON IS MADE OF DOUBLE WALL, CORRUGATED CARDBOARD "A MA A". BROWN IN COLOR. THE INNER PACKING IS DIE-CUT CARDBOARD OR STYROFOAM TO PROTECT AND SECURE THE LAMP AND MUST PASS THE FEDEX AND ISTA-3A DROP TEST REQUIREMENTS.
- EACH CARTON SHALL BE PRINTED WITH A LINE DRAWING AND THE KENROY HOME NAME AND LOGO, MODEL NUMBER AND FINISH, EACH CARTON SHALL BE PROVIDED A UPC LABEL. THE UPC BAR CODE AS FOLLOWS:  
WH=053392050405.

### OTHER DETAILS

- MODEL 21056WH INSTRUCTIONS ARE TO BE PACKED WITH EACH LAMP. INSTRUCTIONS MUST BE PRINTED CLEARLY ON QUALITY PAPER.
- ALL VISIBLE PARTS, EXCEPT SHADE, MUST MATCH LAMP FINISH UNLESS OTHERWISE SPECIFIED.
- ALL BAGS MUST BE LABELED WITH OFFICIAL "THIS BAG IS NOT A TOY" STATEMENT.
- LAMP MUST REST FLAT ON SURFACE AND NOT ROCK. LAMP MUST PASS AN 8° TILT TEST.
- ASSEMBLY TIME: 5 MINUTES.
- THE UL NUMBER IS E144825.
- DIMS OF BOX: 36 CM (14-3/16") LENGTH x 36 CM (14-3/16") WIDTH x 53 CM (20-7/8") HEIGHT. (CUFT.: 2.4')
- NET WEIGHT: 4.4 LBS. GROSS WEIGHT: 7 LBS.
- A 7 CM LENGTH x 4 CM WIDTH HANG TAG SHOULD BE HUNG ON THE NECK.

**KENROY  
HOME**

3723 Regent Boulevard  
JACKSONVILLE, FL. 32224  
PHONE: 904-642-4340  
FAX: 904-642-4150

THIS DOCUMENT AND THE INFORMATION THAT IT DISCLOSES IS THE EXCLUSIVE PROPERTY OF KENROY HOME. ANY REPRODUCTION OR USE OF THIS DRAWING IN PART OR IN WHOLE, WITHOUT THE EXPRESS CONSENT OF THE PROPRIETOR IS PROHIBITED. © 2010 KENROY HOME.

DATE: 5/20/2010

SCALE: NONE

DRAWN BY: JAMES

REFERENCE: GLOVER TABLE LAMP

APPROVAL:

REVISION DATE:

6/21/2013 add package drawing

REVISION DATE:

5/5/2014 change package drawing

REVISION DATE:

REVISION DATE:

MODEL #:

21056

FINISHES:

WH

PAGE: 1 OF: 1