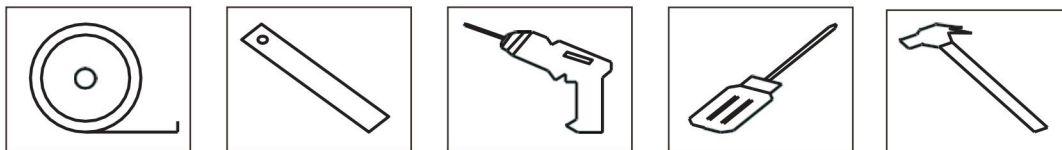


Installation Instructions for LED Medicine Cabinet

Note: To ensure safe general use of this product please follow the installation instructions carefully. Product Must be installed indoors and on a suitable load bearing wall. Installation should be done by a licensed contractor and/or electrician.

Installation Tools Needed



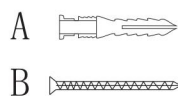
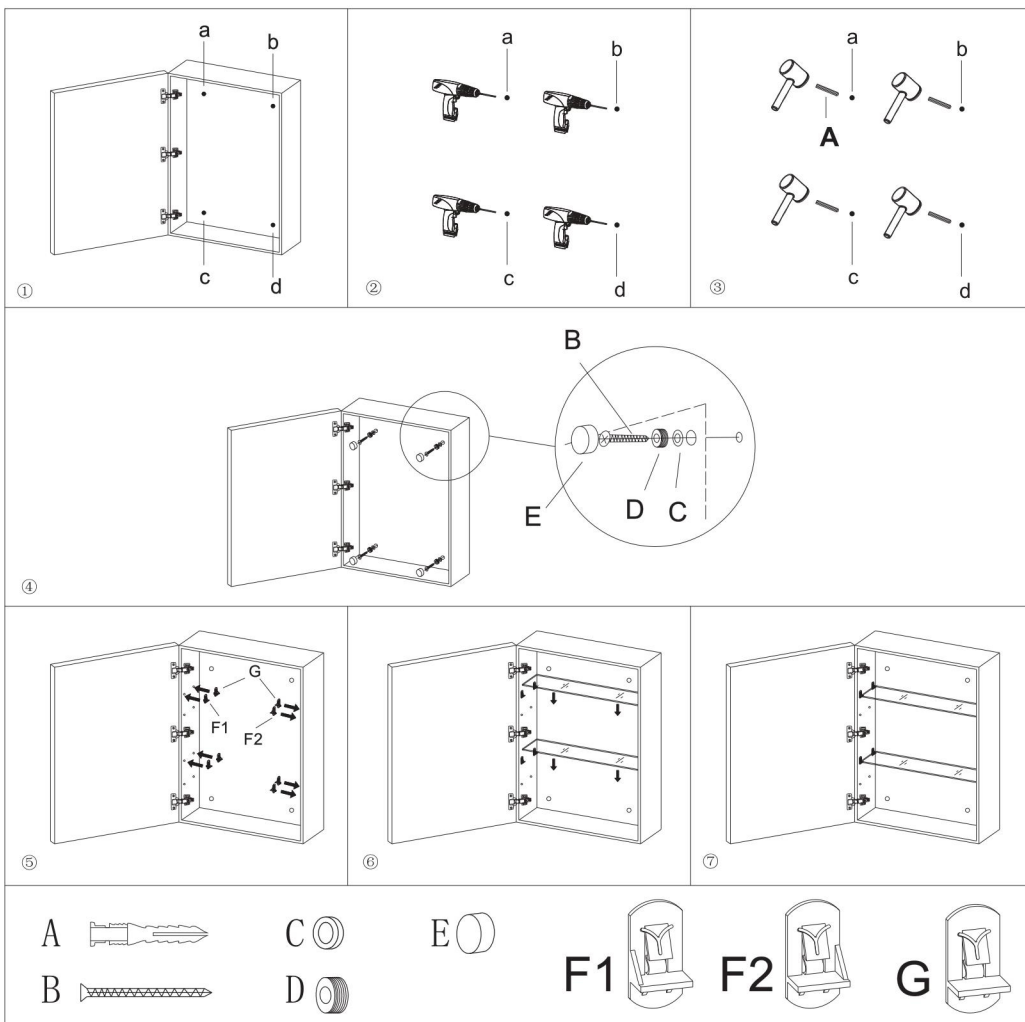
Measuring Tape

Level

Drill

Screwdriver

Hammer



Installation Instructions:

Fig①: Position the cabinet on the wall, marking the pre-drilled holes(a/b/c/d) onto the wall.

Fig②: Using the marks, drill holes into the wall.

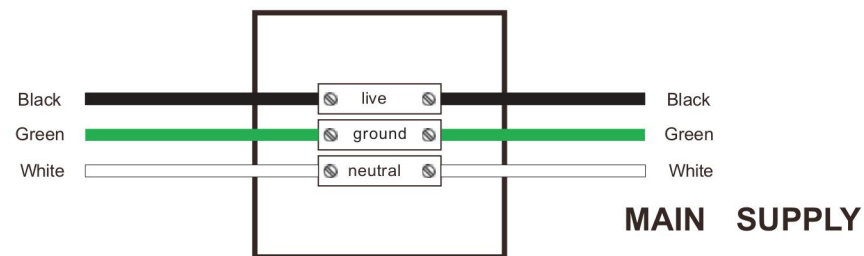
Fig③: Hammer "A" anchors into the pre-drilled holes.


Fig④: Position the cabinet on the wall, aligning the pre-drilled holes with the anchors. Install the mounting hardware "B", "C", "D", and "E" as shown in the illustration.

Fig⑤: Insert the provided shelf clips (F1/F2/G) into the round holes on each side of the cabinet.

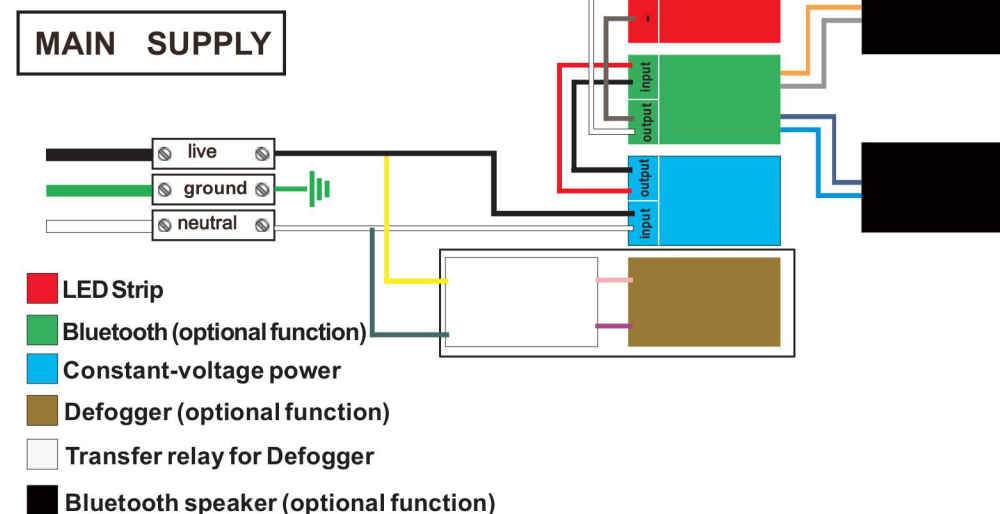
Fig⑥: After installing the shelf clips, insert the glass shelf(s).

Wiring diagram for input terminal



- After the product is connected to the circuit, the switch  on the mirror surface will illuminate.
- Touch the switch to turn the LED light and anti-fog functionality on/off. Holding the switch will adjust the brightness of the LED light

Electronic Diagram



LED Strip

Bluetooth (optional function)

Constant-voltage power

Defogger (optional function)

Transfer relay for Defogger

Bluetooth speaker (optional function)

CAUTION:

During operation of this product, never use hard or sharp objects directly against the mirror surface, as it may result in damage and/or personal injury. Clean the product with a soft cloth and mild detergent only. Do not use abrasives, chemical cleaners, or leave any solutions on the surface such as soup, shampoo, etc. as they may damage the mirror.