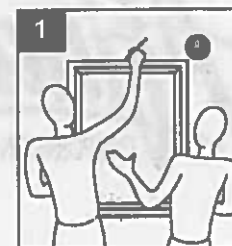
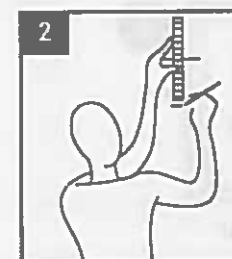


ASSEMBLY INSTRUCTIONS

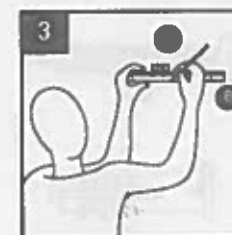
1. With the assistance of another, hold mirror (A) in the desired location and lightly mark with a pencil (not included) the wall at the top centeredge of the mirror (A)



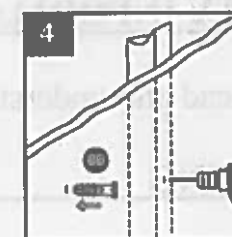
2. Using a ruler or measuring tape (neither included), measure 3 inches down from the initial mark and place a second mark.



3. Align the bottom of the mounting bracket (B) to the second mark, using bubble level (CC) to make sure mounting bracket (B) is level. Mark the three screw holes onto the wall.



4. Drill 3/16 in. pilot holes at marked screw-hole locations.
If not stud is present, install plastic anchors (BB) into holes.



5. Attach mounting bracket (B) to wall with mounting screws (AA).
Use bubble level (CC) again to ensure mounting bracket (B) is level.



6. Carefully hang mirror (A) onto mounting bracket (B).

