






Important safety instructions:


- Please read carefully all instructions before assembly.
- For your safety and ease, assembly by two or more adults is recommended.
- Keep instructions for future use.

Pre-assembly:


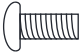


- Do not discard any content until assembly is complete to avoid accidentally discarding small parts or hardware.
- Take out all parts and hardware from box.



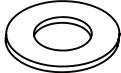

Parts List

Item	Description		QTY
P1		right armrest	1PC
P2		left armrest	1PC
P3		backrest rail	1PC
P4		backrest cushion	1PC
P5		seat cushion	1PC

Item	Description		QTY
P6		Armrest cushion	2PC

Hardware List

Item	Description		QTY
H1		M6*10MM	2PC
H2		M6*25MM	4PC
H3		M6*40MM	4PC
H4		M6*40MM	4PC

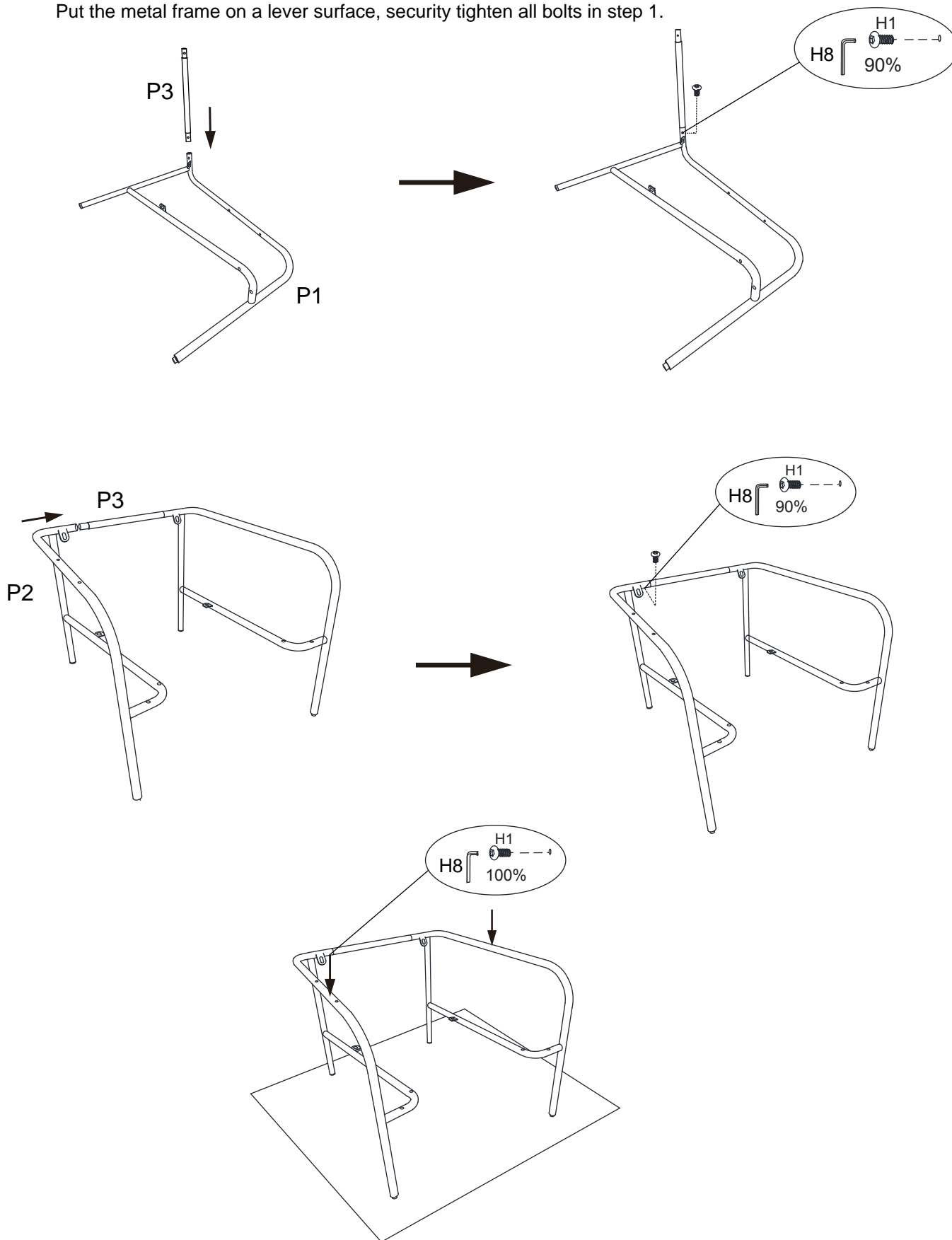
Item	Description		QTY
H5		M8*60MM	4PC
H6		(Ø8+Ø13)*2MM	4PC
H7		(Ø8+Ø22)*2MM	4PC
H8		M6	1PC

DISCLAIMER:

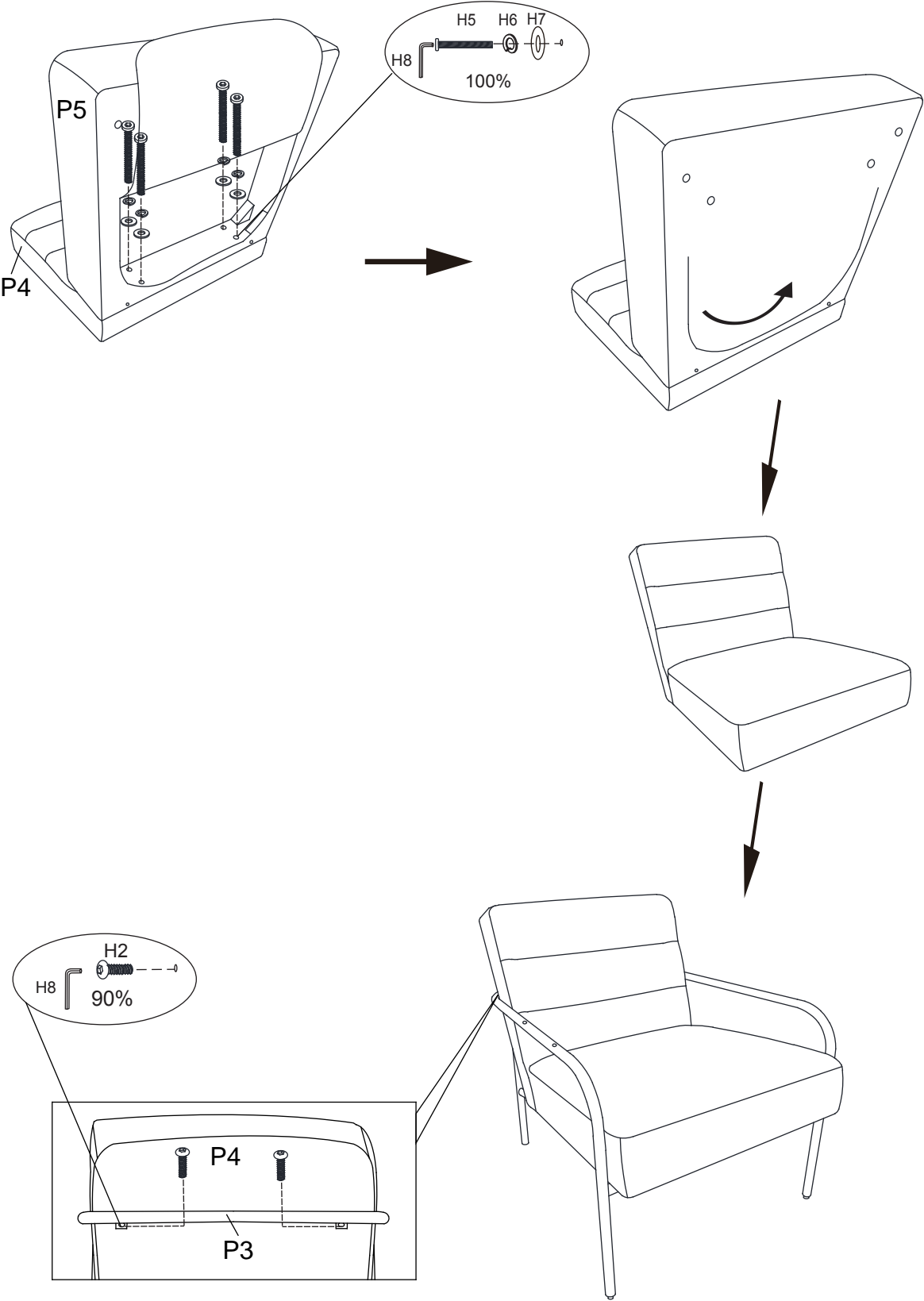
WHEN PROPERLY ASSEMBLED, THIS ITEM IS SAFE FOR INTENDED USE. SELLER IS NOT LIABLE FOR ANY DAMAGES RESULTING FROM ITEM BEING IMPROPERLY ASSEMBLED AFTER PURCHASE.

Assembly Procedures:

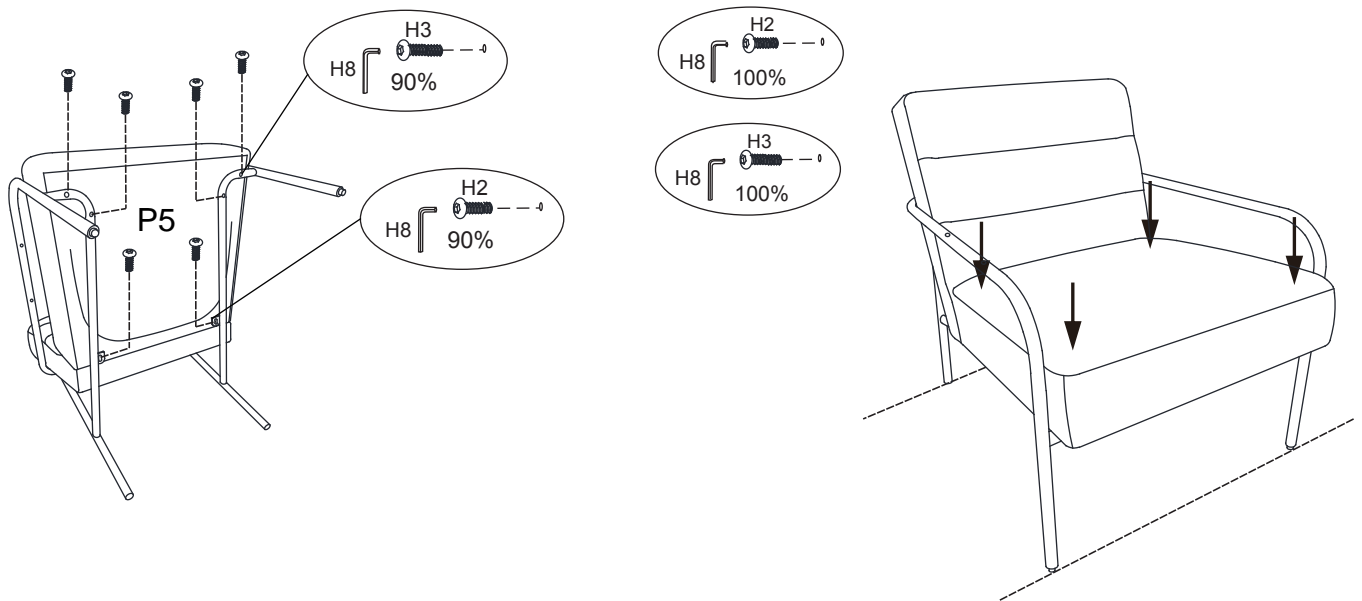
Step 1. Assemble the chair on a flat, soft surface such as a carpet or cloth to prevent scratching. Loosely attach backrest rail (P3) to right armrest (P1) by using bolts (H1) and allen wrench (H8). Loosely attach left armrest (P2) to the other end of backrest rail (P3) by using bolts (H1) and allen wrench (H8). Put the metal frame on a level surface, security tighten all bolts in step 1.



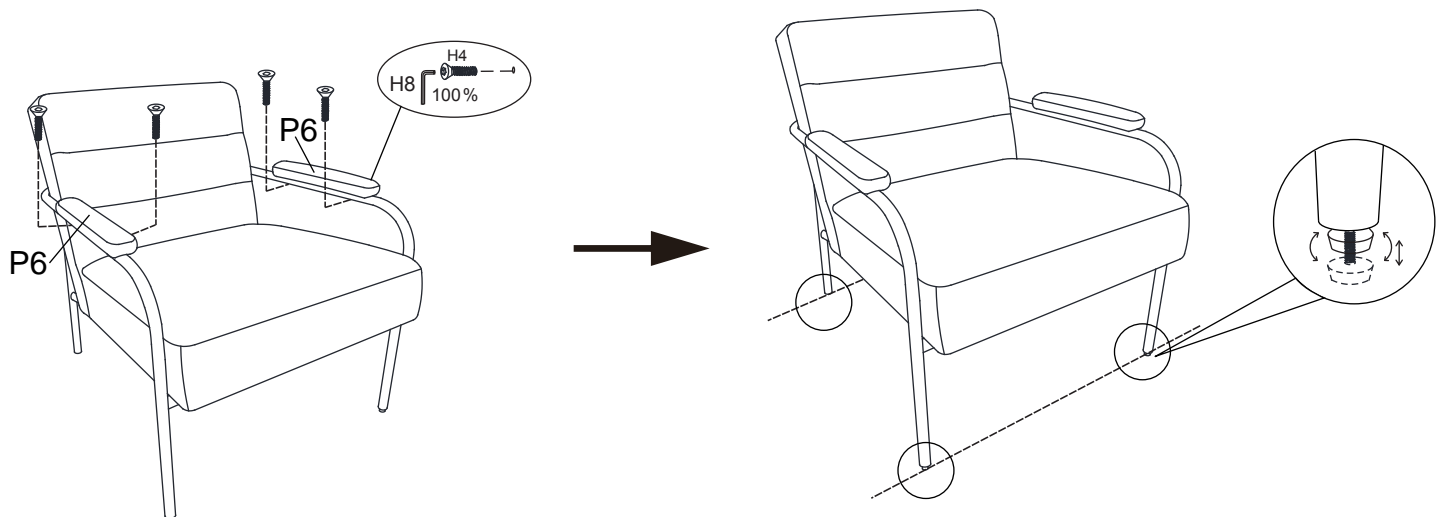
Step 2. Connect the seat cushion(P5) & back cushion(P4) with bolts(H5)&washer(H6&H7) and wrench (H8). Close the zipper. Put the assembled cushions on the chair frame. Loosely fix backrest rail(P3) and back of backrest(P4) by using bolts (H2) and allen wrench(H8).



Step 3. Fix bottom of seat cushion(P5) to metal frame by using bolts(H3)&(H2) as illustration below.
Security tighten all bolts in step 2.3



Step 4. Connect the armrest cushion(P6) with the metal frame by using bolts(H4) & allen wrench (H8) as illustration below.
Adjust levelers (as drawing) as necessary.



ADDITIONAL NOTE ABOUT SAFETY:
BOLTS MAY LOOSEN DURING NORMAL EVERYDAY USE.
THEY SHOULD BE INSPECTED AT LEAST EVERY 3 MONTHS AND RE-TIGHTENED AS NEEDED TO PREVENT DAMAGE OR INJURY,
AND ENSURE STABILITY.
Thank you for your purchase