

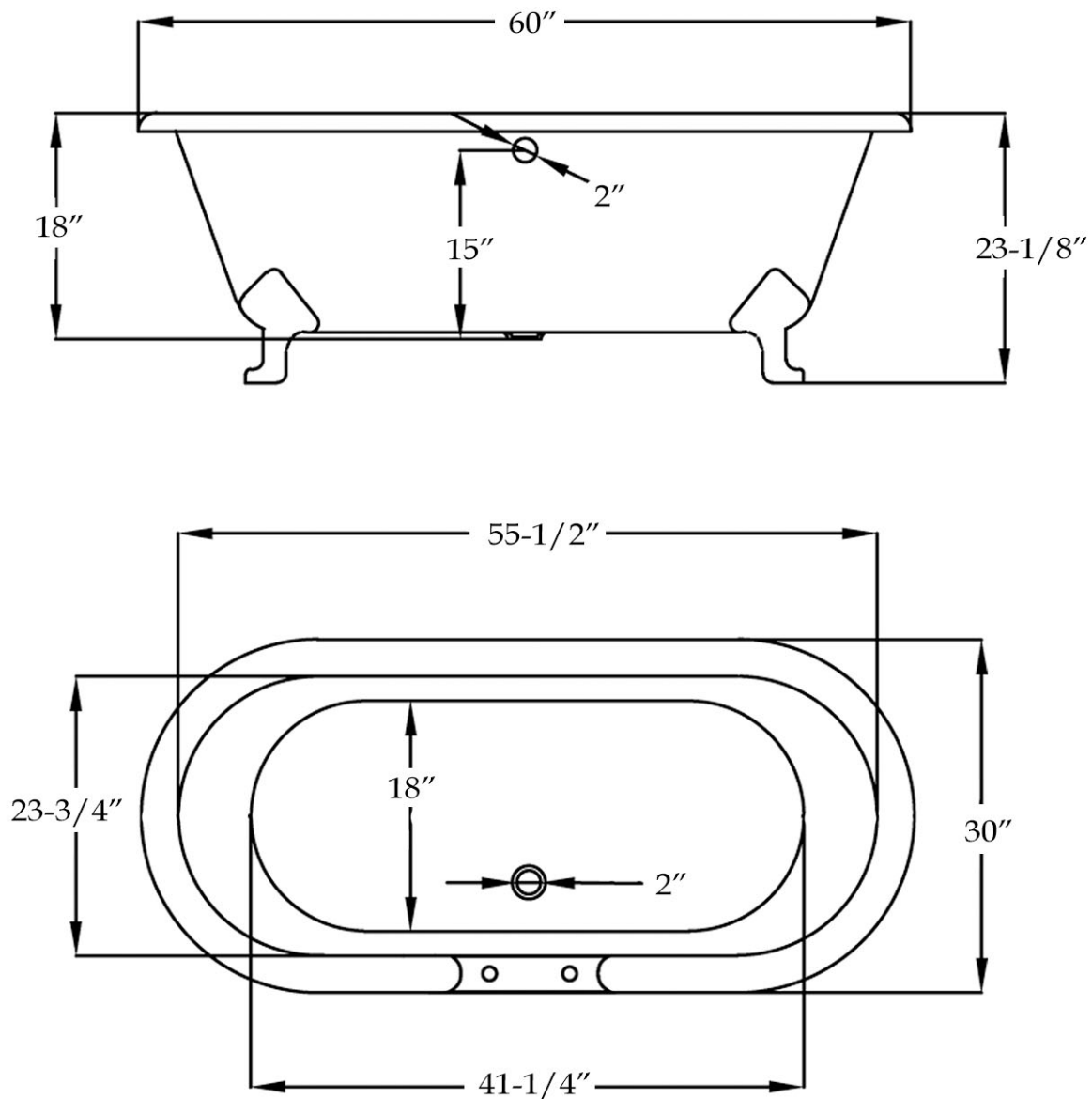


# Schematic

## Double Ended Clawfoot Tub by Randolph Morris

Cast Iron

Item #: RM60DE7



Weight (empty): 245 lbs    Weight (filled): 694 lbs    Capacity: 58 gal    Water depth: 15"

All products and specifications are subject to change without notice. Randolph Morris is not responsible for typographical and/or dimensional errors. Typographical errors are subject to correction.

Note: Rough-in dimensions may vary +/- 1/2" and are subject to change. No responsibility is assumed by Randolph Morris.