



MAINTENANCE AND CARE INSTRUCTIONS

Olympia products are designed and engineered under strict quality standards. Regular and proper care of our products will ensure years of trouble free service. To clean, simply wipe with a damp, soft cloth. Do not use abrasive or harsh cleaners as they may result in finish damage. Regularly remove and clean minor debris from the aerator.

ATTENTION: IMPORTANT INFORMATION BEFORE YOU START

- For "Shower Only" installations, be sure to plug bottom (tub) outlet with the Brass Cap (I) supplied in the Trim Package.
- For "Tub Only" installations, be sure to plug top (shower) outlet with the Brass Cap (I) supplied in the Trim Package.
- For thread joint installations, always use Thread Sealant or Teflon Tape on all threads.

Special Caution to Consumer: This valve is designed for ease of operation. Excessive force on the handle may cause severe damage and will void the manufacturer's warranty.

OLYMPIA FAUCETS, INC. LIMITED LIFETIME WARRANTY *

Olympia Faucets, Inc. warrants its products to the original consumer purchaser to be free from defects in material and workmanship as long as the consumer purchaser owns it. Dated proof of purchase must accompany all warranty claims. PVD finishes carry a lifetime warranty in residential service.

Olympia Faucets, Inc. will replace, free of charge, to the original consumer purchaser, any and all parts that prove defective under normal installation, use, and service. Damage as a result of misuse, abuse, accident, or improper installation, will consequentially void this warranty. Replacement parts can be obtained from your local dealer or directly from Olympia Faucets. Olympia Faucets, Inc. recommends using a certified plumber for all faucet installation and repair.

This warranty is limited to replacement of defective parts only. Incidental and consequential damages, labor charges, repair, or replacement costs are expressly excluded. Some states do not allow the exclusion or limitation of incidental or consequential damages, so the above limitation may not apply to you. This warranty gives you specific legal rights, as you may have other rights of which vary from state to state.

Installation or maintenance and cleaning must be in compliance with instructions furnished with every Olympia product. If you find a problem with your product, please immediately contact your nearest Olympia Faucets, Inc. dealer or sales representative.

* 2 year limited warranty on commercial and multi-family projects.



INSTALLATION AND MAINTENANCE INSTRUCTIONS FOR OLYMPIA SINGLE HANDLE TUB AND SHOWER SETS

Caution: This product may not meet the current building code. This product is not pressure balanced. Pressure balanced products are available from Olympia. Please consult your nearest Olympia dealer.

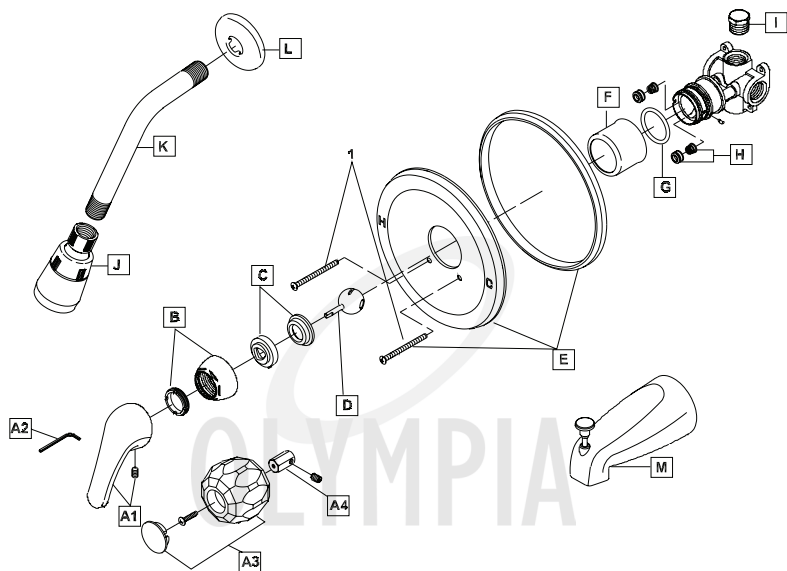
PRODUCT NUMBERS

- #P-2020** Single Handle Tub and Shower Set ~ Acrylic Handle
- #P-2000** Single Handle Tub and Shower Set ~ Metal Handle
- #P-2022** Single Handle Shower Only ~ Acrylic Handle
- #P-2002** Single Handle Shower Only ~ Metal Handle
- #P-2021** Single Handle Tub Only ~ Acrylic Handle
- #P-2001** Single Handle Tub Only ~ Metal Handle





Thank you for purchasing this quality product. Olympia products are rigorously tested to provide long service under normal conditions. Prior to installation, familiarize yourself with this parts diagram. Make sure that you have all of the illustrated parts for your Olympia product before installation.



	ITEM #	DESCRIPTION
A1	OP-140006	Metal Lever Handle
A2	OP-490036	1/8" Allen Wrench
A3	OP-190008	Acrylic Ball Handle
A4	OP-490023	Acrylic Handle Adapter
B	OP-490003	Cap & Adjusting Ring
C	OP-490004	Cam & Washer
D	OP-390001	Stainless Steel Ball
E	OP-440018	Face Plate
F	OP-440032	Valve Sleeve
G	OP-420001	O-Ring
H	OP-490041	Springs & Seats
I	OP-440020	Cap
J	OP-640031	Showerhead
K	OP-640002	Shower Arm
L	OP-640001	Shower Flange
M	OP-640015	1/2" IPS Tub Spout
1	OP-440019	Faceplate Screws

INSTALLATION INSTRUCTIONS

Tools you will need:

- Plumbers Putty
- Teflon Tape
- Screwdriver
- Flexible Supply Lines
- Pipe Wrench
- Adjustable Wrench
- Basin Wrench
- Soft Cloth

STANDARD VALVE INSTALLATION:

1. Install valve with the word UP facing up towards the ceiling,
2. Connect water supply lines. Left side is hot, and Right side is cold.
Caution:- Use 1/2" IPS tapered thread connections. For 1/2" IPS straight thread connections may need to use excessive thread sealant to prevent from leak.
3. NOTE: To obtain maximum valve operation, the following installation dimensions are strongly Recommended:
 - Distance between valve body and showerhead outlet should be a minimum of 36".
 - Piping between valve body and tub spout must not exceed 18".

FLUSHING THE SYSTEM:

1. Prior to installing the showerhead(J). Turn to the fully "On" position. Slowly turn on the water supplies for one minute to flush out debris in the lines. After flushing the system, turn off the water.

TRIM INSTALLATION:

1. Slide the Face Plate over the Sleeve Tube(F) and install with the 2 trim screws provided.
2. Install all remaining trim. For IPS Installation : (1) The 1/2" nominal pipe must be kept with a minimum length of 4-1/4" length from finished face of the tub or wall. (2) Screw tub spout onto the pipe and tighten by hand. Recommend using Teflon Tape.
3. Place the handle on the stem. Secure the lever handle by tightening the set screw with 1/8" allen wrench for lever handle or by Phillips head screw for Acrylic Handle,



For more care information or trouble shooting inquiries about your Olympia product, please call:
OLYMPIA FAUCETS, INC. (888) 772-7701
Central Standard Time: 8:00am ~ 7:00pm
www.olympiafaucets.com