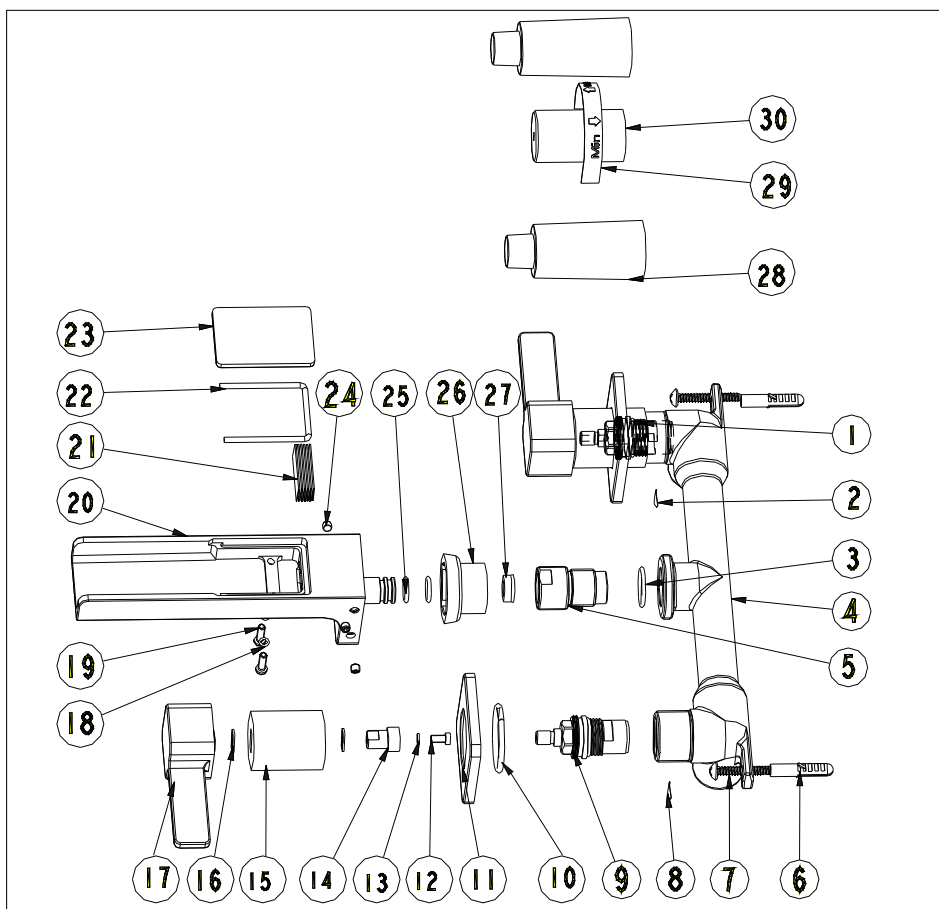


# Wall mounted basin mixer

EB\_FM003W

## Installation Instruction

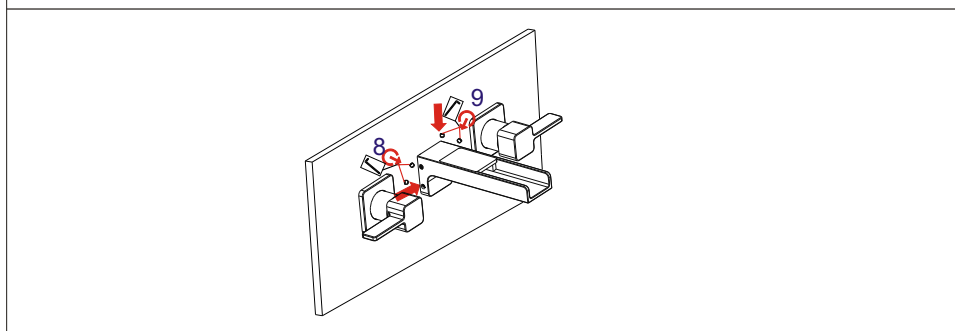
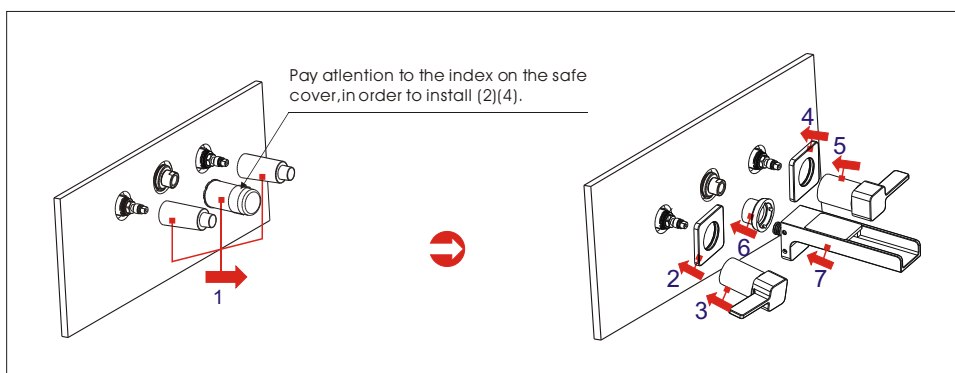
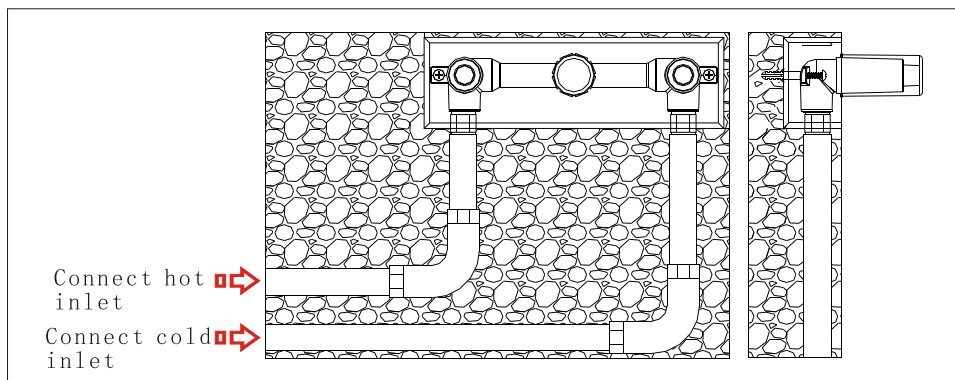
Please read this instruction carefully so as to avoid the installation difficulty.



## Components List

No.	Component	Quantity
1	Ceramic head part	1
2	Red index	1
3	O-ring	1
4	Main body	1
5	Union	1
6	Plastic sleeve	2
7	Cross-head screw	2
8	Blue index	1
9	Ceramic head part	1
10	Sealing strip	2
11	Plate	2
12	Cross-head screw	2
13	Spring shim	2
14	Longer rod	2
15	Connecting cover	2
16	Flat washer	4
17	Handle	2
18	O-ring	2
19	Cross-head screw	2
20	Spout	1
21	Net	1
22	O-ring	1
23	Decorating cover	1
24	Female allen screw	4
25	O-ring	2
26	Adjusting pipe	1
27	Flow rate controller	1
28	Safe cover for body	2
29	Index	1
30	Safe cover for spout	1

## Installation Step

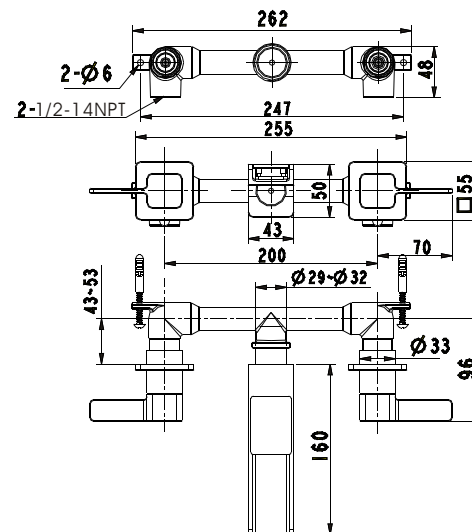


✱ See the fig for the position of the valve and inlet pipes.

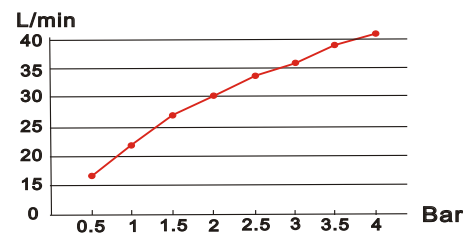
### ✱✱ Test:

Open the supply pipes, close the ceramic cartridge and check any leakage; open the ceramic cartridge and check the smooth water flow. Having tested, install the valve to the wall, take the safe cover apart and install the plate and handle.

## Installation Fig



## Flow rate Curves



Test pressure: 1.6MPa (16bar)

Flow pressure:

Min 0.05MPa

Max 1.60MPa

Recommended pressure:

0.1MPa to 0.8MPa (1 to 8 bar)

## Note

1. Ensure to clean the water supply pipe before installing to avoid being jammed.
2. The cold-water supply must be connected on the right and the hot-water supply on the left.
3. Check the installing dimension according to the Figure and ensure it is installed correctly.
4. Hot-water inlet must not be over 80°C.